

Appendix G. Visualization of the segmentation and scoring for COVID-19 datasets

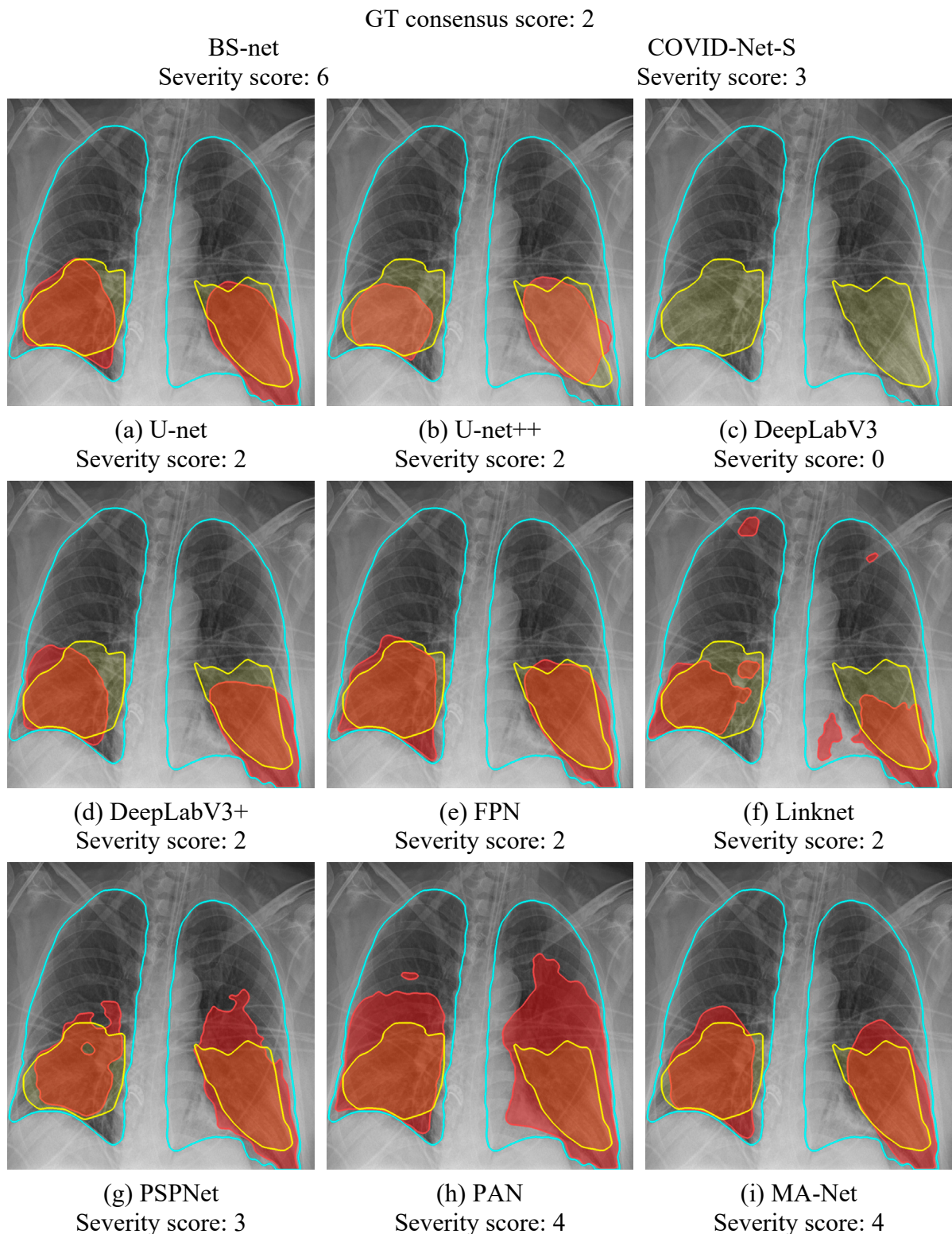


Figure G1. Comparison of the segmentation and severity score estimation of a COVID-19 subject from the CRD dataset. A cyan delineation refers to the lung segmentation obtained by Stage I; a red mask is a disease mask obtained by Stage II; a yellow mask refers to the ground-truth segmentation of the disease

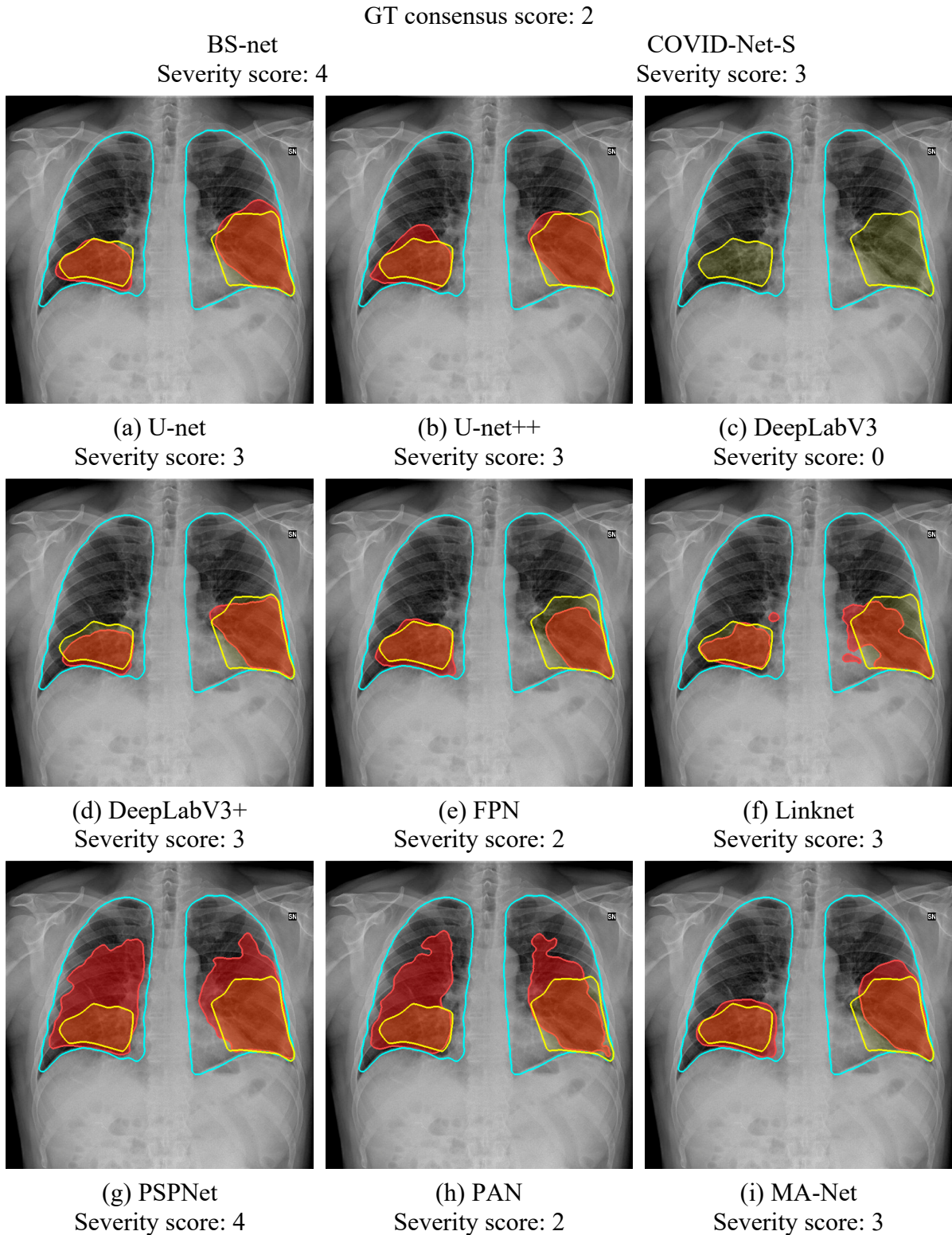
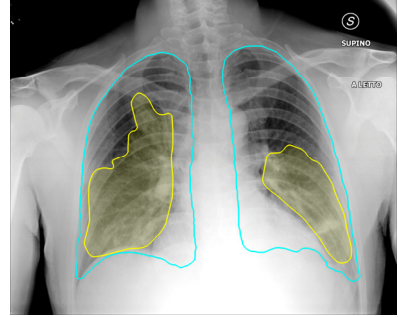
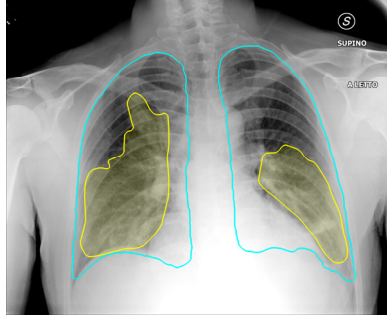
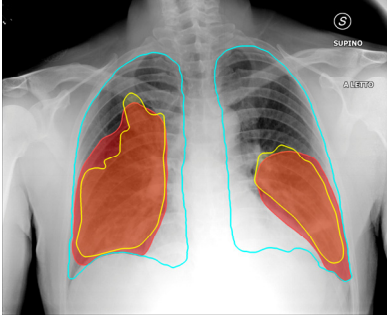


Figure G2. Comparison of the segmentation and severity score estimation of a COVID-19 subject from the FCXD dataset. A cyan delineation refers to the lung segmentation obtained by Stage I; a red mask is a disease mask obtained by Stage II; a yellow mask refers to the ground-truth segmentation of the disease

GT consensus score: 4.5

BS-net
Severity score: 5

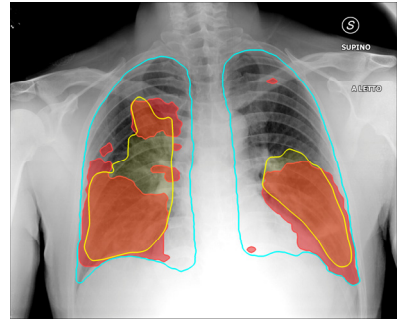
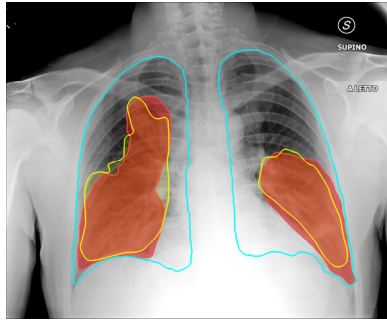
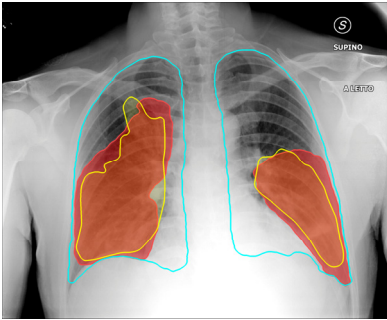
COVID-Net-S
Severity score: 4



(a) U-net
Severity score: 4

(b) U-net++
Severity score: 0

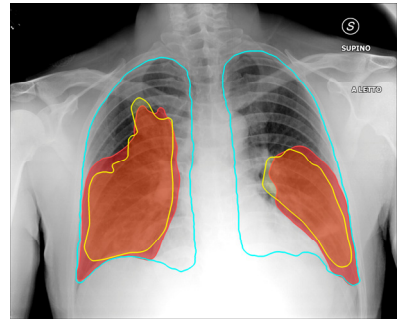
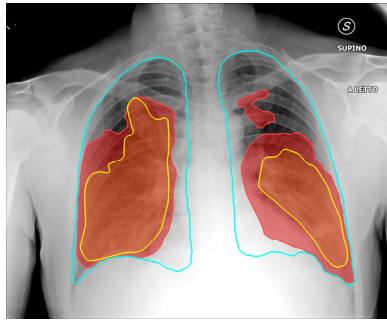
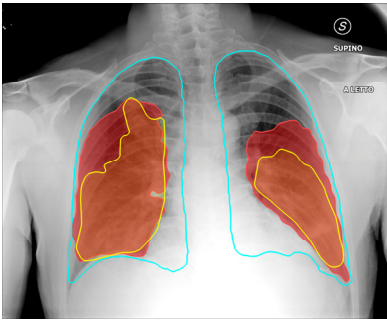
(c) DeepLabV3
Severity score: 0



(d) DeepLabV3+
Severity score: 4

(e) FPN
Severity score: 4

(f) Linknet
Severity score: 5



(g) PSPNet
Severity score: 4

(h) PAN
Severity score: 4

(i) MA-Net
Severity score: 4

Figure G3. Comparison of the segmentation and severity score estimation of a COVID-19 subject from the CCXD dataset. A cyan delineation refers to the lung segmentation obtained by Stage I; a red mask is a disease mask obtained by Stage II; a yellow mask refers to the ground-truth segmentation of the disease