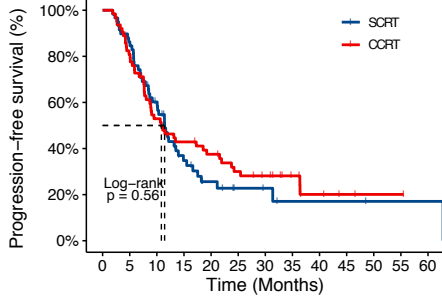


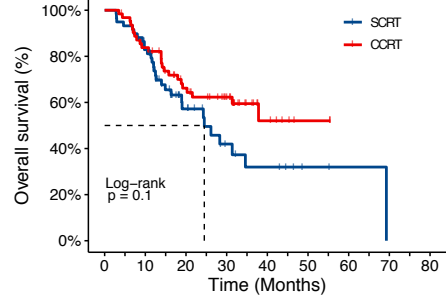
A



Number at risk

SCRT	59	50	33	16	9	5	4	2	2	2	1	1	1
CCRT	63	50	32	25	21	16	13	8	4	2	1	1	0

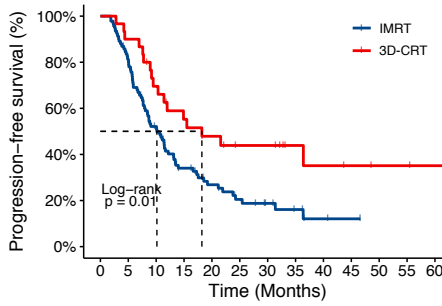
B



Number at risk

SCRT	59	47	19	9	6	2	1	0	0
CCRT	63	51	35	25	7	2	0	0	0

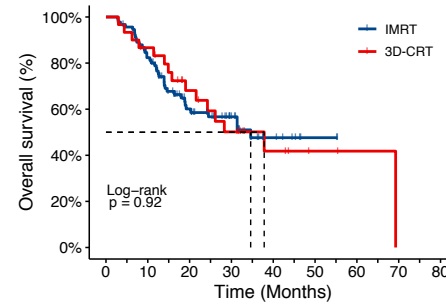
C



Number at risk

IMRT	92	73	45	26	18	12	8	5	2	1	0	0	0
3D-CRT	30	27	20	15	12	9	5	4	3	2	2	1	0

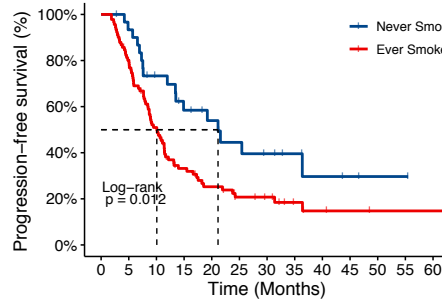
D



Number at risk

IMRT	92	73	38	23	8	2	0	0	0
3D-CRT	30	25	16	11	5	2	1	0	0

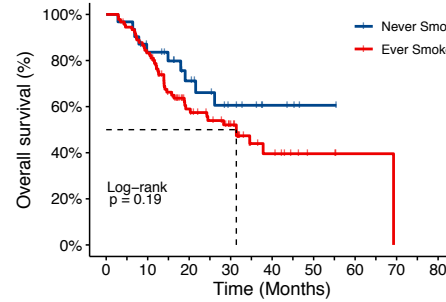
E



Number at risk

Never Smoker	31	28	20	15	12	9	7	5	3	2	1	1	0
Ever Smoker	91	72	45	26	18	12	10	5	3	2	1	1	1

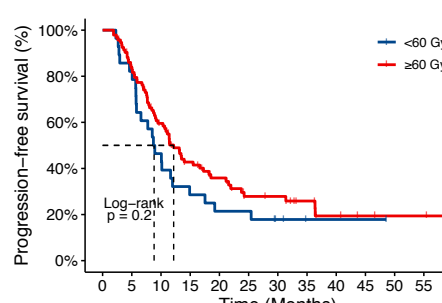
F



Number at risk

Never Smoker	31	24	16	9	4	1	0	0	0
Ever Smoker	91	74	38	25	9	3	1	0	0

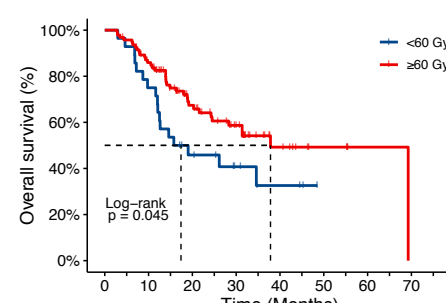
G



Number at risk

<60 Gy	28	23	13	8	6	3	1	1	1	0	0	0
≥60 Gy	94	77	52	33	24	15	14	9	5	3	2	1

H



Number at risk

<60 Gy	28	21	11	6	3	0	0	0	0
≥60 Gy	94	77	43	28	10	4	1	0	0

Supplementary Figure 2. Clinical correlates of dCRT survival in NSCLC. (A and B) Kaplan-Meier estimates of (A) PFS and (B) OS in the full analysis set comparing patients treated with concurrent vs. sequential CRT. (C and D) Kaplan-Meier estimates of (C) PFS and (D) OS in the full analysis set comparing patients treated with 3D-CRT vs. IMRT. (E and F) Kaplan-Meier estimates of (E) PFS and (F) OS in the full analysis set comparing patients with and without smoking histories. (G and H) Kaplan-Meier estimates of (G) PFS and (H) OS in the full analysis set comparing patients treated with different RT doses. HR, hazard ratio; CI, confidence interval. Tick marks indicate censored data.