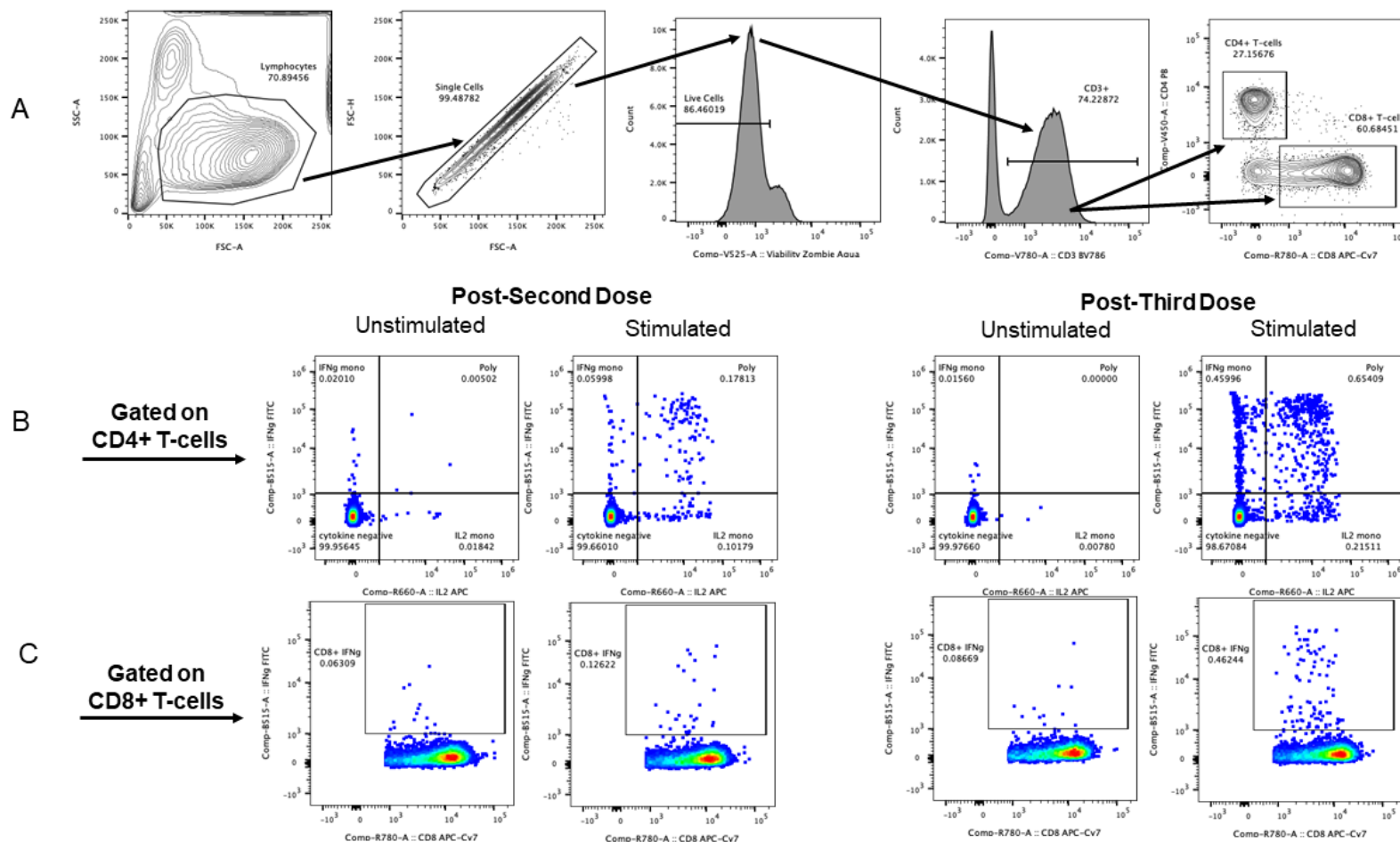


Supplementary figure 1. Gating strategy for identifying spike (S)-specific CD4<sup>+</sup> and CD8<sup>+</sup> T-cells.



(A) Arrows indicate the sequence of hierarchical gates for identifying live CD4<sup>+</sup> and CD8<sup>+</sup> T-cells. Number in each plot refers to the frequency of the gated subset. (B, C) Representative cytokine plots for CD4<sup>+</sup> (B) and CD8<sup>+</sup> (C) T-cells. Unstimulated cells were treated with media alone and stimulated samples with peptides. Cytokine gates were guided by fluorescence minus one (FMO) controls. Representative plots are shown post-second and –third dose in the same patient. Abbreviations: FSC – forward scatter, SSC – side scatter, IFNg – interferon gamma, IL2 - interleukin 2, poly – polyfunctional, mono – monofunctional.