

**Supplemental Material for Manuscript:**

**Assessing the Clinical Meaningfulness of the Alzheimer's Disease Composite Score**

**(ADCOMS) Tool**

**Authors and Affiliations:** Amir Abbas Tahami Monfared, MD, PhD<sup>1,2</sup>; William R. Lenderking, PhD<sup>3</sup>;

Yulia Savva, PhD<sup>3</sup>; Mary Kate Ladd, MA<sup>3</sup>; Quanwu Zhang, PhD<sup>1</sup>, for the Alzheimer's Disease

Neuroimaging Initiative\*

<sup>1</sup>Eisai, Inc. Nutley, NJ, USA

<sup>2</sup>McGill University, Epidemiology, Biostatistics, and Occupational Health, Montreal (QC), Canada.

<sup>3</sup>Evidera Inc., Bethesda, MD, USA

**Corresponding Author:**

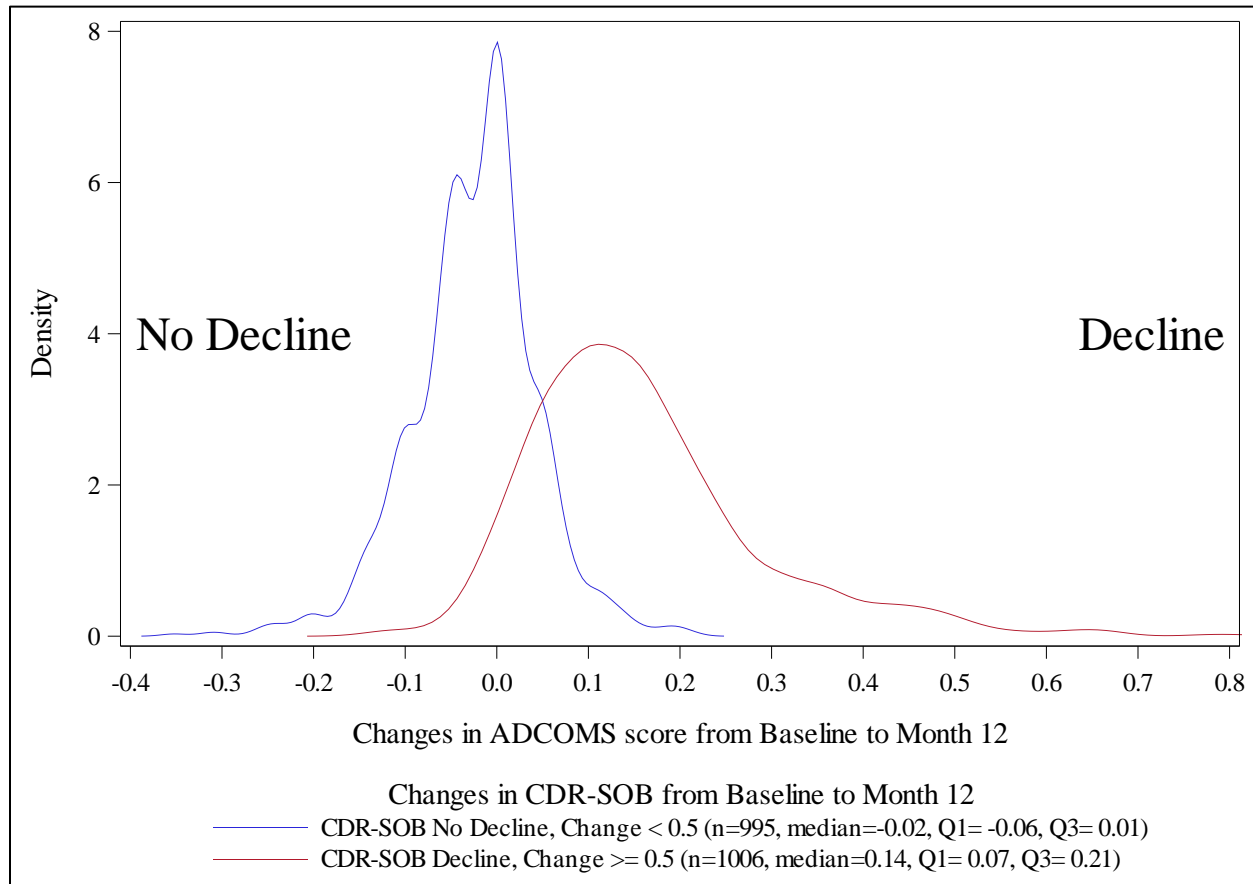
Amir Abbas Tahami Monfared

Eisai Inc.

200 Metro Blvd., Nutley, NJ 07110

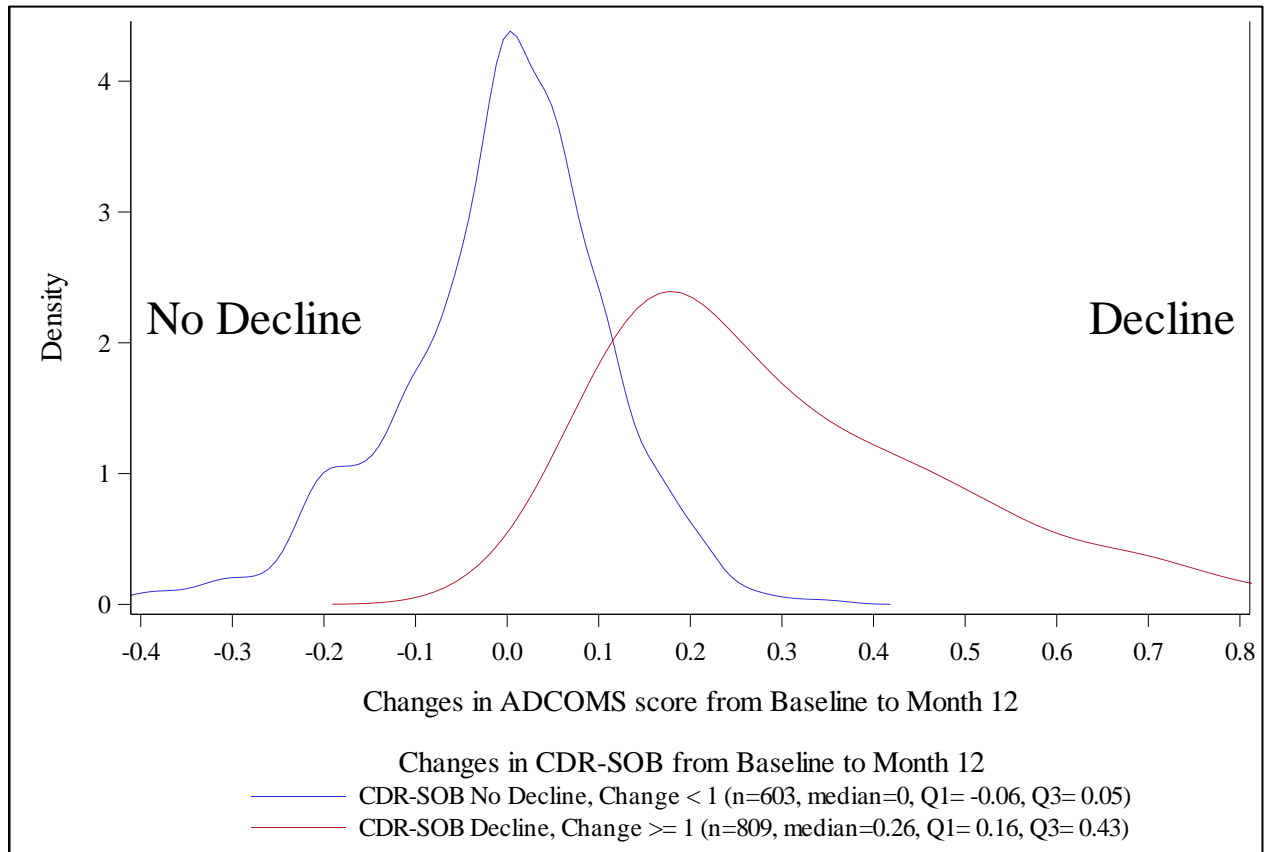
[Amir\\_Tahami@eisai.com](mailto:Amir_Tahami@eisai.com)

**Supplemental Figure 1. PDF Plot of the Change in ADCOMS Score from Baseline to Month 12 by CDR-SOB for MCI Patients**



Abbreviations: ADCOMS = Alzheimer's Disease Composite Score; CDR-SOB = Clinical Dementia Rating Scale Sum of Boxes; MCI = mild cognitive impairment; PDF = probability density function

**Supplemental Figure 2. PDF Plot of the Change in ADCOMS Score from Baseline to Month 12 by CDR-SOB for Dementia Patients**



Abbreviations: ADCOMS = Alzheimer's Disease Composite Score; CDR-SOB = Clinical Dementia Rating Scale Sum of Boxes; PDF = probability density function

**Supplemental Table 1. ROC Analysis by APOE Status: Best Youden's Indices**

	<b>NACC</b>	<b>ADNI</b>	<b>Legacy Dataset</b>
<b>MCI</b>			
APOE $\epsilon$ 4 allele carrier	0.02 - 0.03	0.08	0.05, 0.06, 0.09
APOE $\epsilon$ 4 allele non-carrier	0.02 - 0.03	0.04	0.03 – 0.05
<b>Dementia</b>			
APOE $\epsilon$ 4 allele carrier	0.11	0.11	--
APOE $\epsilon$ 4 allele non-carrier	0.06, 0.11	0.13	--

Abbreviations: ADNI = Alzheimer's Disease Neuroimaging Initiative; MCI = mild cognitive impairment; NACC = National Alzheimer's Coordinating; ROC = receiver operating characteristic