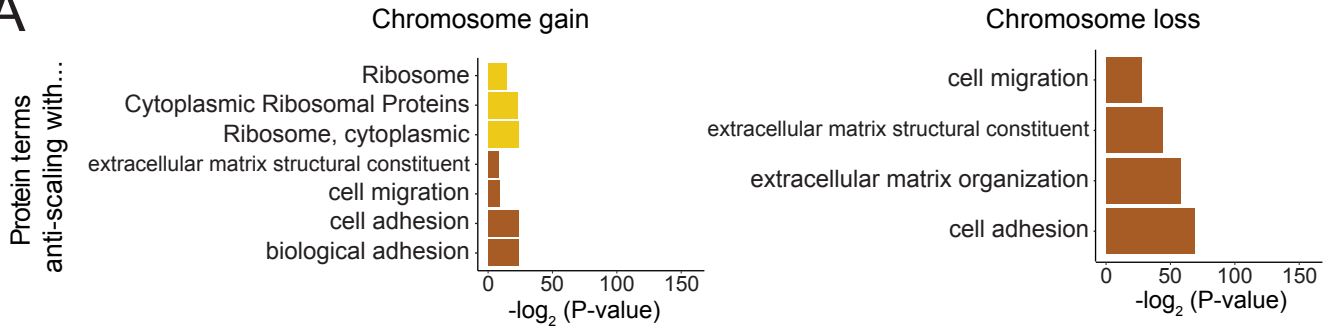
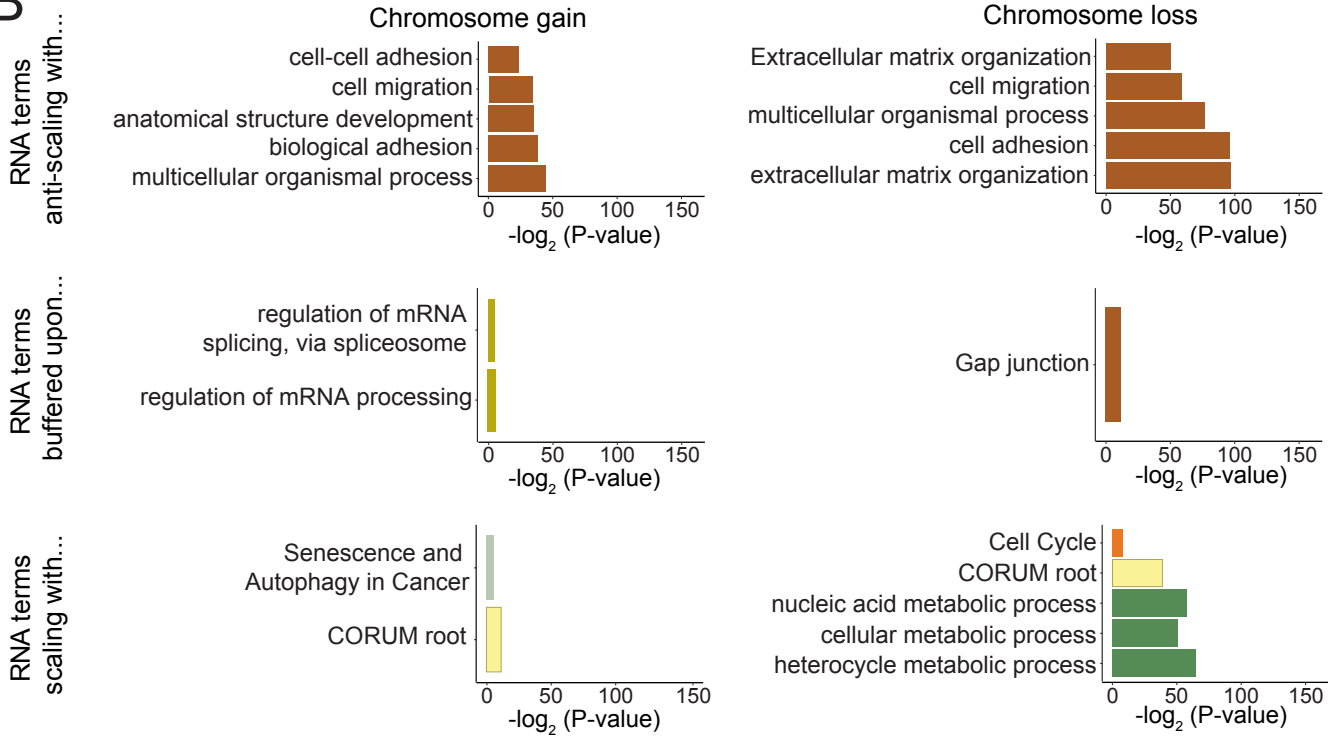


Supplemental Figure S5

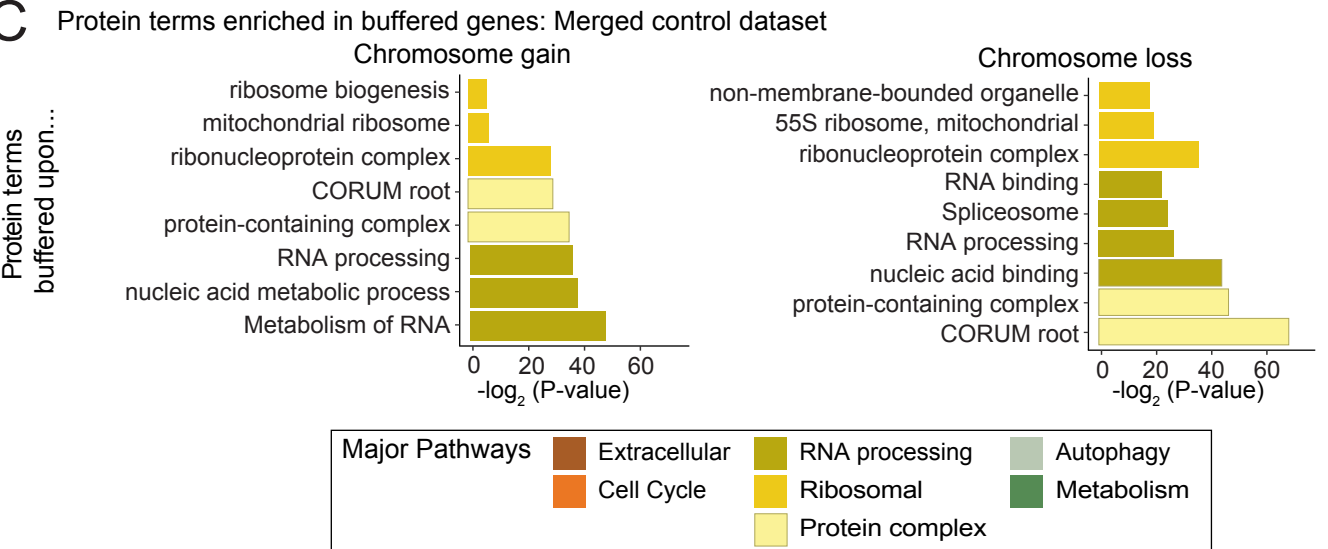
A



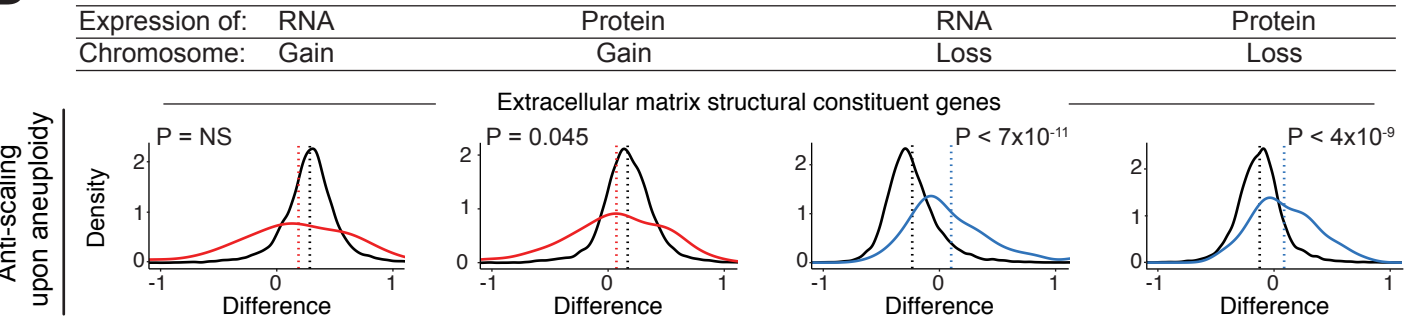
B



C



D



Supplemental Figure S5. GO term enrichment analysis of anti-scaling proteins and RNA expression categories.

A) Bar graphs displaying the GO terms enriched among proteins that exhibit anti-scaling upon chromosome gain or loss. The complete set of GO terms is included in Supplementary Table 4.

B) Bar graphs displaying the GO terms enriched among RNAs that exhibit the indicated expression changes upon chromosome gain or loss. The complete set of GO terms is included in Supplementary Table 5.

C) Bar graphs displaying the GO terms enriched among proteins from the merged-control dataset that are buffered upon chromosome gain or loss. The complete set of GO terms is included in Supplemental Table S7.

D) Density graphs of the difference in RNA or protein expression per gene group upon chromosome gain (red) or loss (blue) for extracellular matrix structural constituent genes. Difference in expression for all other genes shown in black. Mean difference per gene group (red or blue), and all other genes (black), is indicated by the dotted lines. P-values are from two-sided *t*-tests between the indicated gene group and the background set of all other genes. List of genes in gene groups are in Supplemental Table S6.