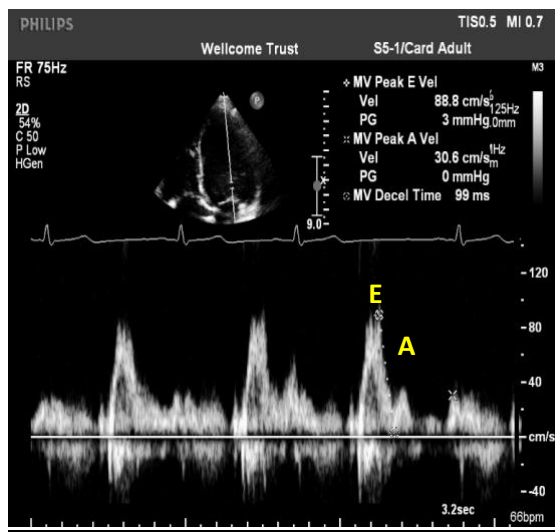


Supplementary Figures and Tables

Suppl. Figure 1: Image of a 2D echo 4-Chamber view, with the pulse wave cursor through the mitral valve. At the bottom of the image is the Pulse Wave Doppler trace of the mitral inflow velocities with the E and A waves labelled.



Suppl. Table 1: Correlations of maternal data with body fat at median 9 years. Maternal glucose (fasting and 2-hour post OGTT) and BMI were measured at 28 weeks and correlated with child's body composition taken at median 9 years of age. Correlation coefficients (r) are shown with with p values (# $p \leq 0.05$ and * $p \leq 0.01$).

Maternal data ↓	Child data →	BMI	Body fat	Arm fat	Truncal fat	Supra iliac SFT	Triceps SFT	Subscapular SFT
Fasting glucose		0.07	0.28 [#]	0.23 [#]	0.23 [#]	0.22 [#]	0.14	0.14
2hr glucose		0.11	0.23 [#]	0.26 [#]	0.20	0.15	0.17	0.07
BMI		0.28 [*]	0.25 [#]	0.19	0.25 [#]	0.24 [#]	0.26 [*]	0.27 [*]

Suppl. Table 2: Generalised Linear Modelling with Child's Whole Body Fat or Truncal Fat (%) as dependent variable and ethnicity (reference group SA), gender (reference group male), maternal fasting glucose and maternal BMI as covariates. Significant values (in bold) are represented by: # $p \leq 0.05$, * $p \leq 0.01$ and ‡ $p \leq 0.001$.

A: Whole cohort:

Marker	β	Std. Error	95% CI		Chi-square
			Lower	Upper	
Whole Body Fat:					
Ethnicity	-5.3	1.3	-7.9	-2.8	16.6 ‡
Gender	4.6	1.3	2	7.2	11.7 ‡
Maternal Fasting Glucose	0.9	1.7	-2.5	4.2	0.3
Maternal BMI	0.3	0.2	0.03	0.7	4.6 #
Truncal Fat:					
Ethnicity	-5.1	1.2	-7.5	-2.8	18.4 ‡
Gender	3.4	1.2	1	5.8	7.7 *
Maternal Fasting Glucose	1.0	1.6	-2.0	4.1	0.4
Maternal BMI	0.3	0.2	-0.01	0.6	3.5

B: By gender:

Marker	β	Std. Error	95% CI		Chi-square
			Lower	Upper	
Whole Body Fat:					
<i>Females</i>					
Ethnicity	-7.2	2.1	-11.2	-3.1	12.1 ‡
Maternal Fasting Glucose	-2.9	2.2	-7.3	1.5	1.7
Maternal BMI	1.0	0.3	0.4	1.5	12.1 ‡
<i>Males</i>					
Ethnicity	-5.7	1.5	-8.6	-2.8	14.4 ‡
Maternal Fasting Glucose	5.9	2.4	1.1	0.7	5.7 #
Maternal BMI	-0.1	0.2	-0.4	0.3	0.2
Truncal Fat:					
<i>Females</i>					
Ethnicity	-6.6	1.9	-10.4	-2.8	11.5 ‡
Maternal Fasting Glucose	-1.9	2.1	-6.0	2.3	0.8
Maternal BMI	0.8	0.3	0.3	1.3	9.5 *
<i>Males</i>					
Ethnicity	-5.5	1.4	-8.3	-2.8	15.9 ‡
Maternal Fasting Glucose	4.7	2.3	0.23	9.1	4.3 #
Maternal BMI	-0.1	0.2	-0.4	0.3	0.2

Suppl. Table 3: Comparison of left ventricular indices. Values are given as mean (SD). All p values for T-Tests are non-significant (>0.05).

	WE	SA
Left Ventricular Mass/BSA	65.03 (14.5)	60.35 (10.52)
IVS diastole	7.11 (0.99)	7.04 (0.95)
LVID diastole	39.12 (4.37)	37.08 (3.64)
LVPW diastole	6.61 (1.14)	6.5 (1.2)
IVS systole	10.17 (1.3)	9.52 (1.36)
LVID systole	24.24 (3.48)	23.16 (2.85)
LVPW systole	10.56 (1.68)	10.19 (1.63)