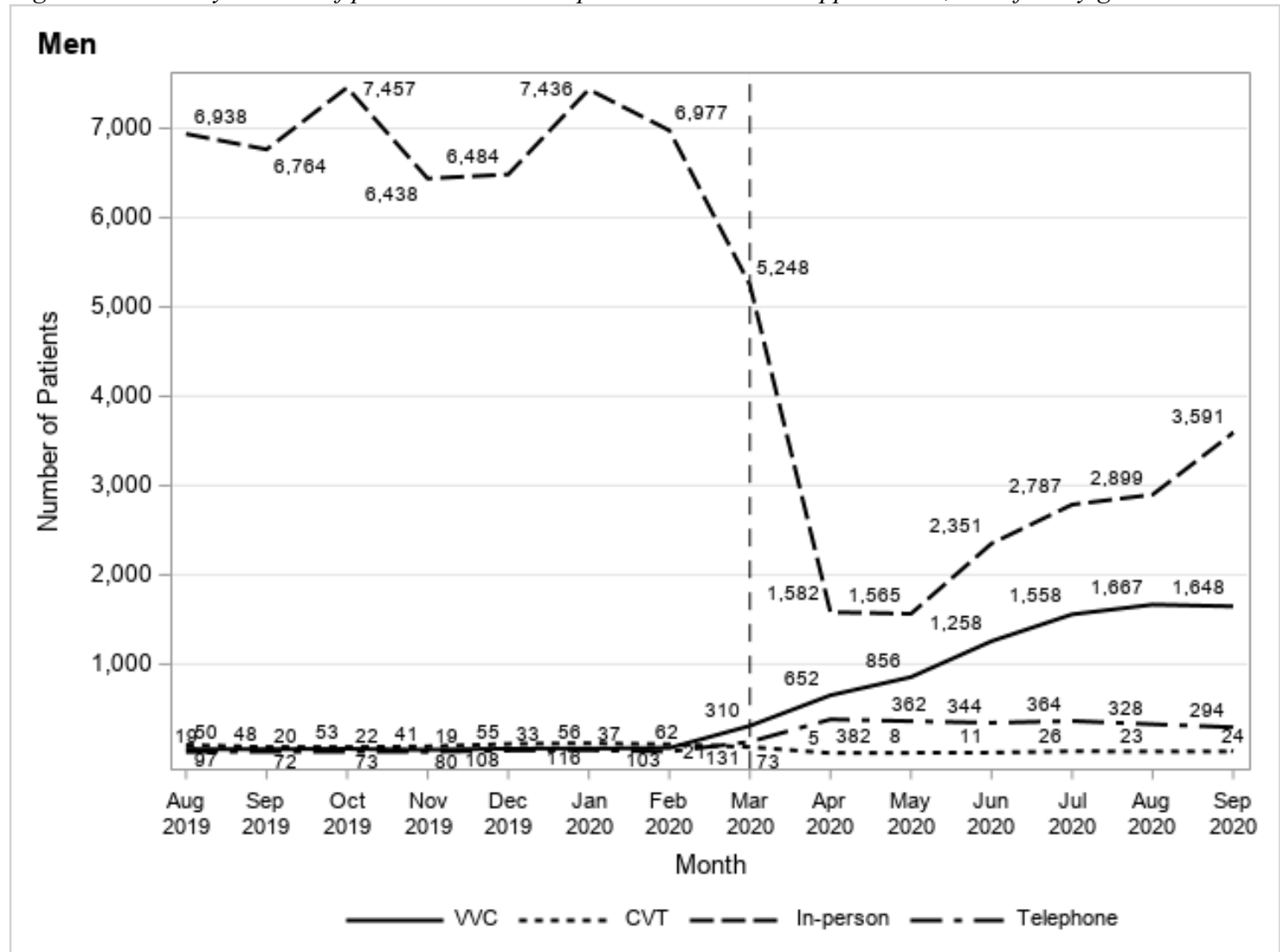


Supplementary Figures

Figure S1- Monthly number of patients who had in-person or telehealth appointment, stratified by gender



Women

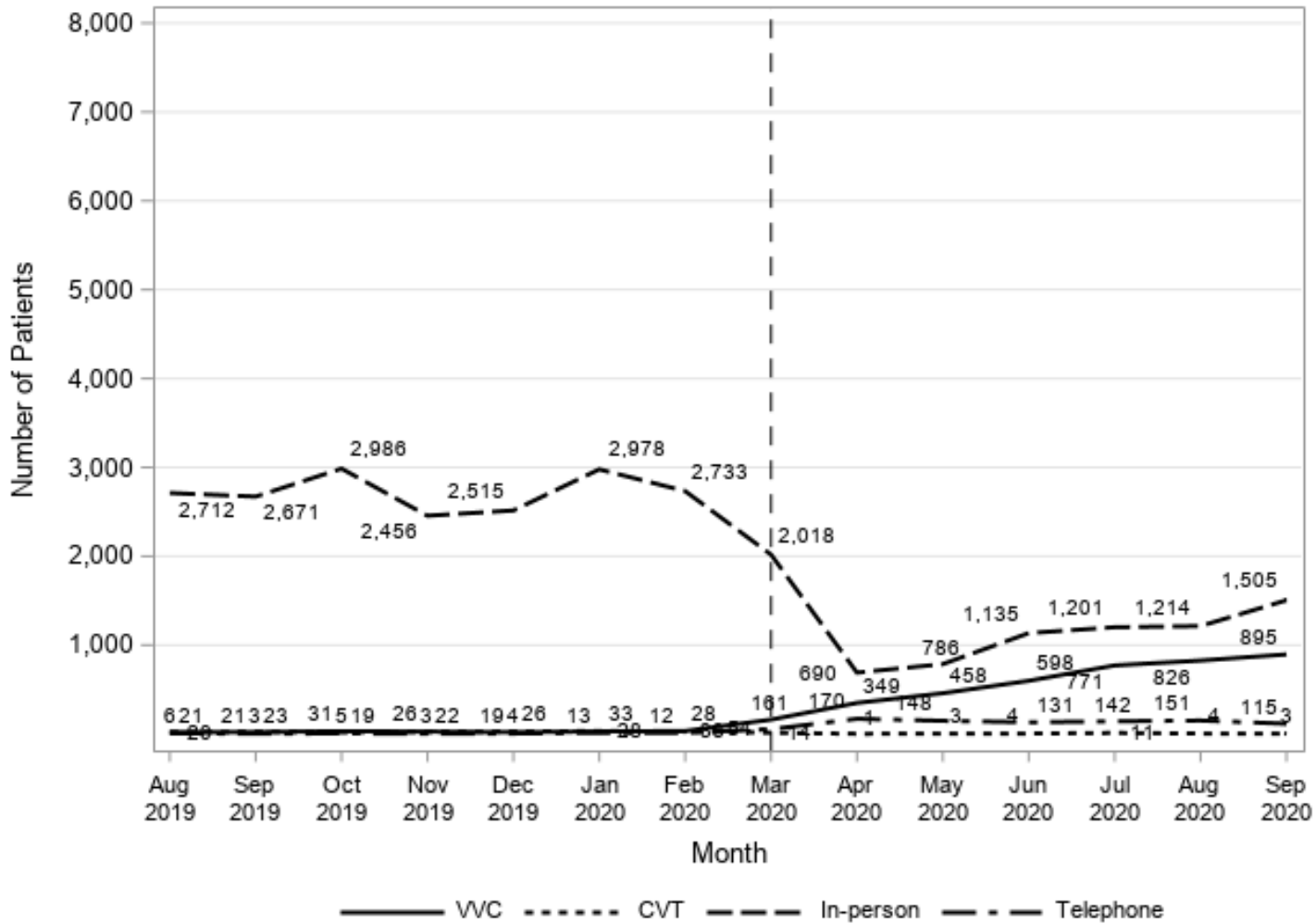
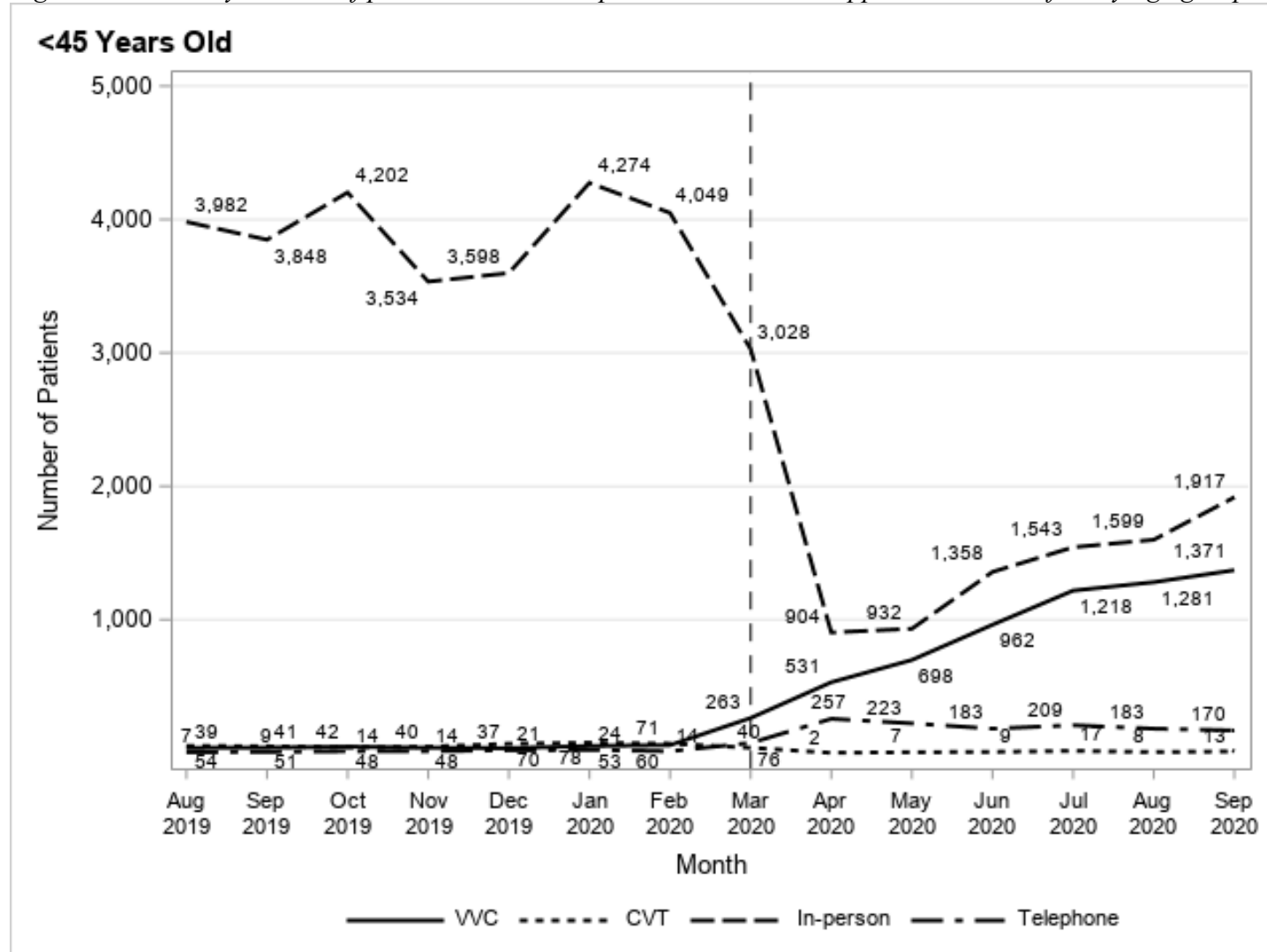
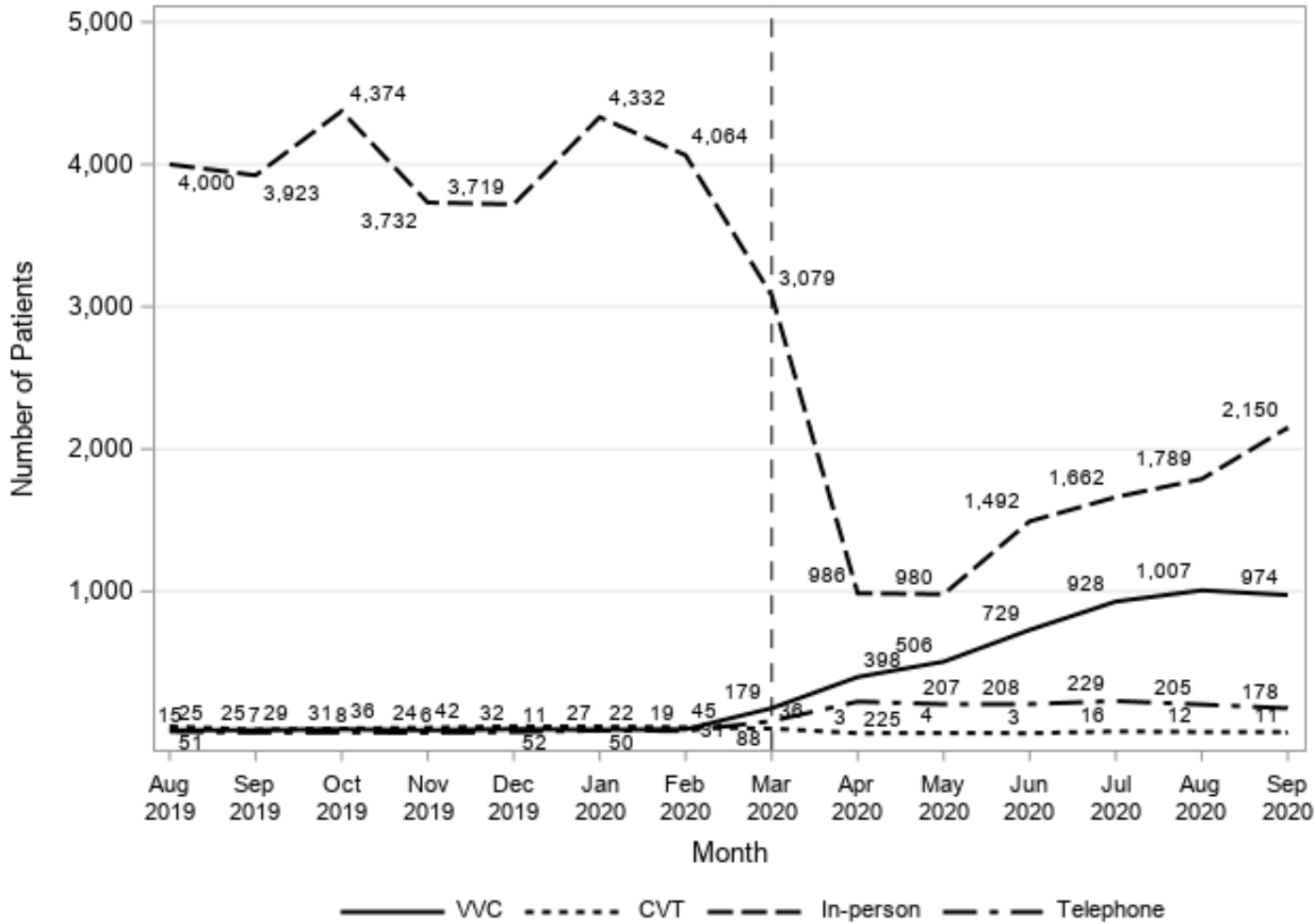


Figure S2 - Monthly number of patients who had in-person or telehealth appointment, stratified by age group



45 - 64 Years Old



≥65 Years Old

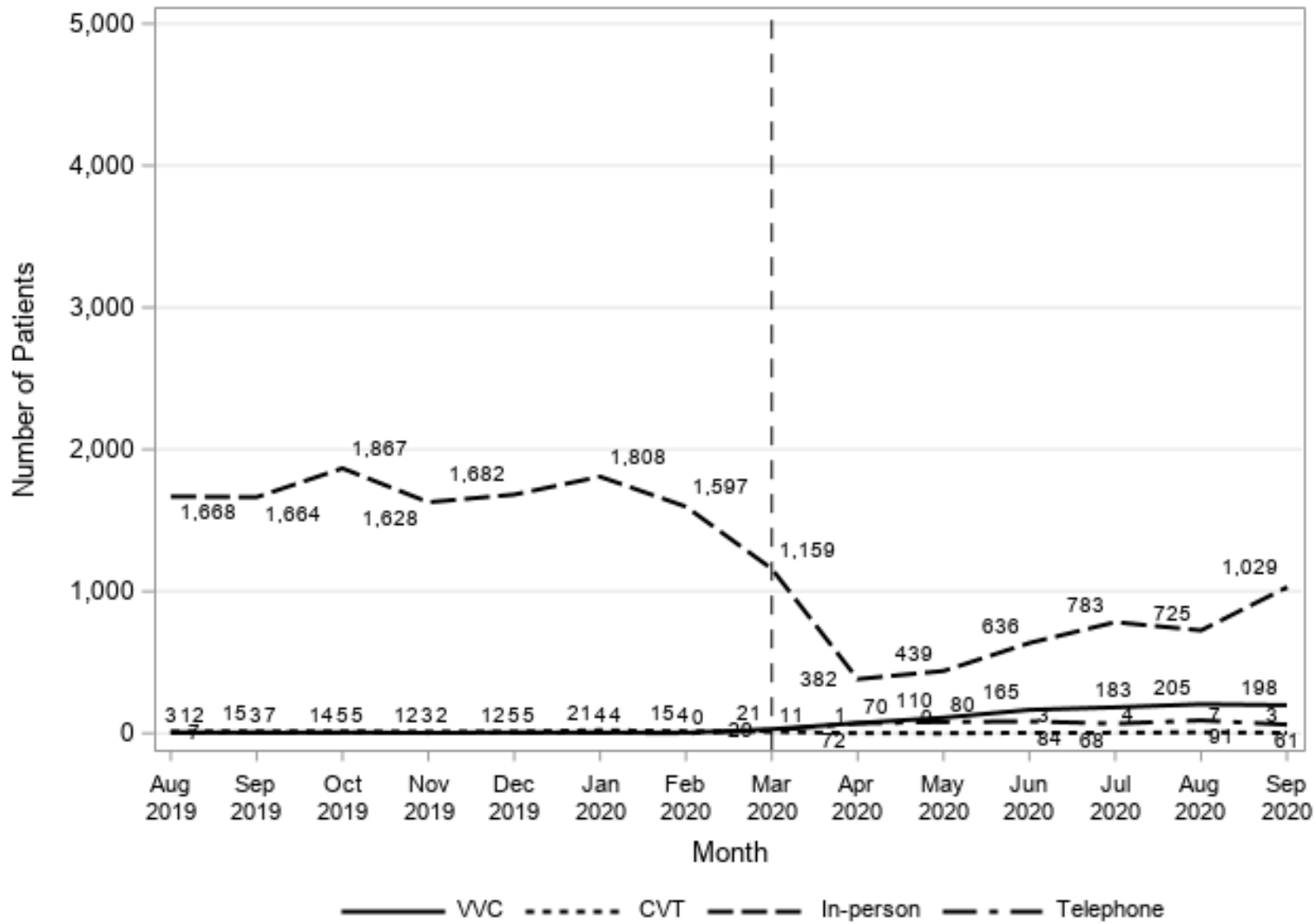
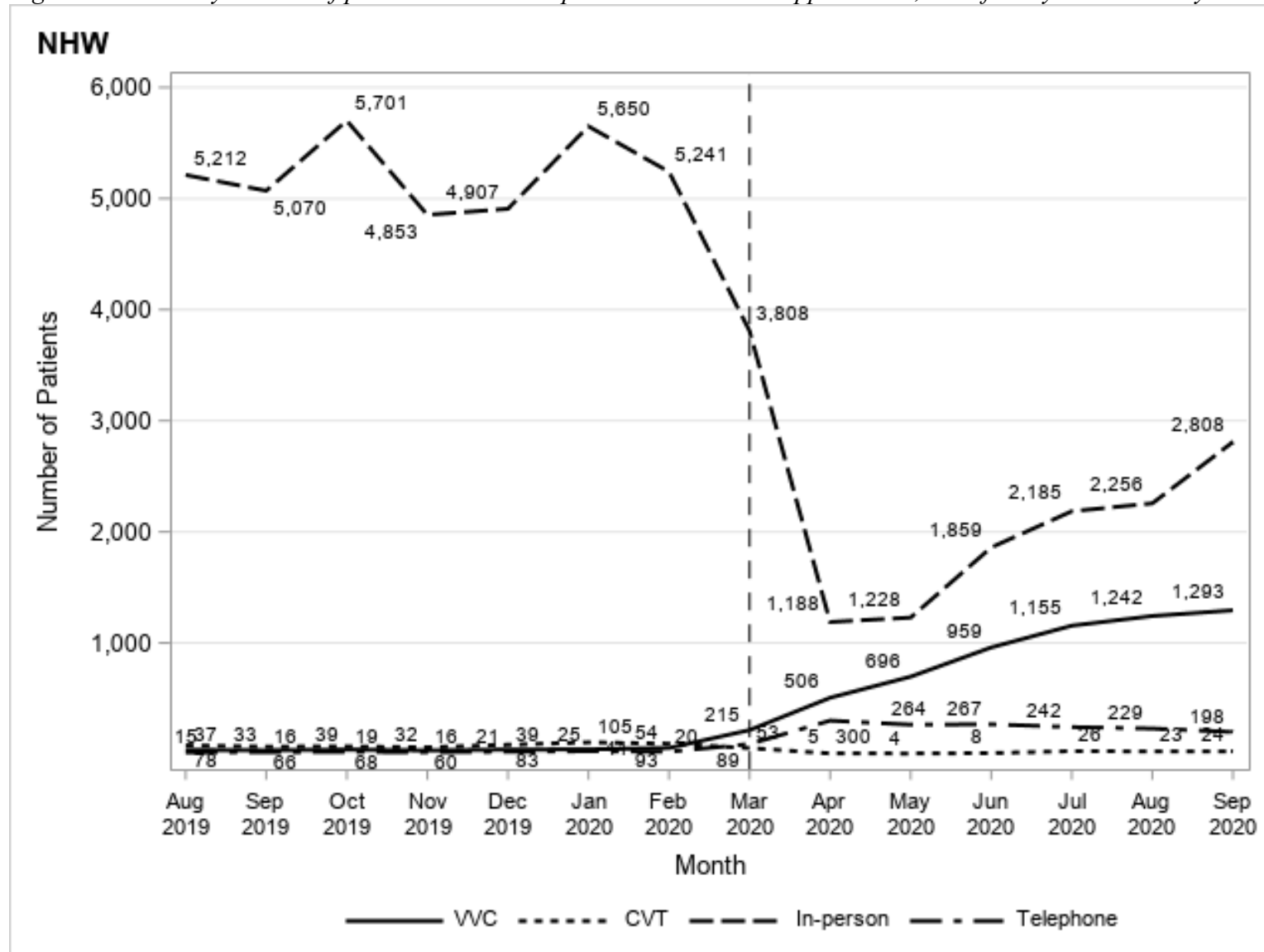
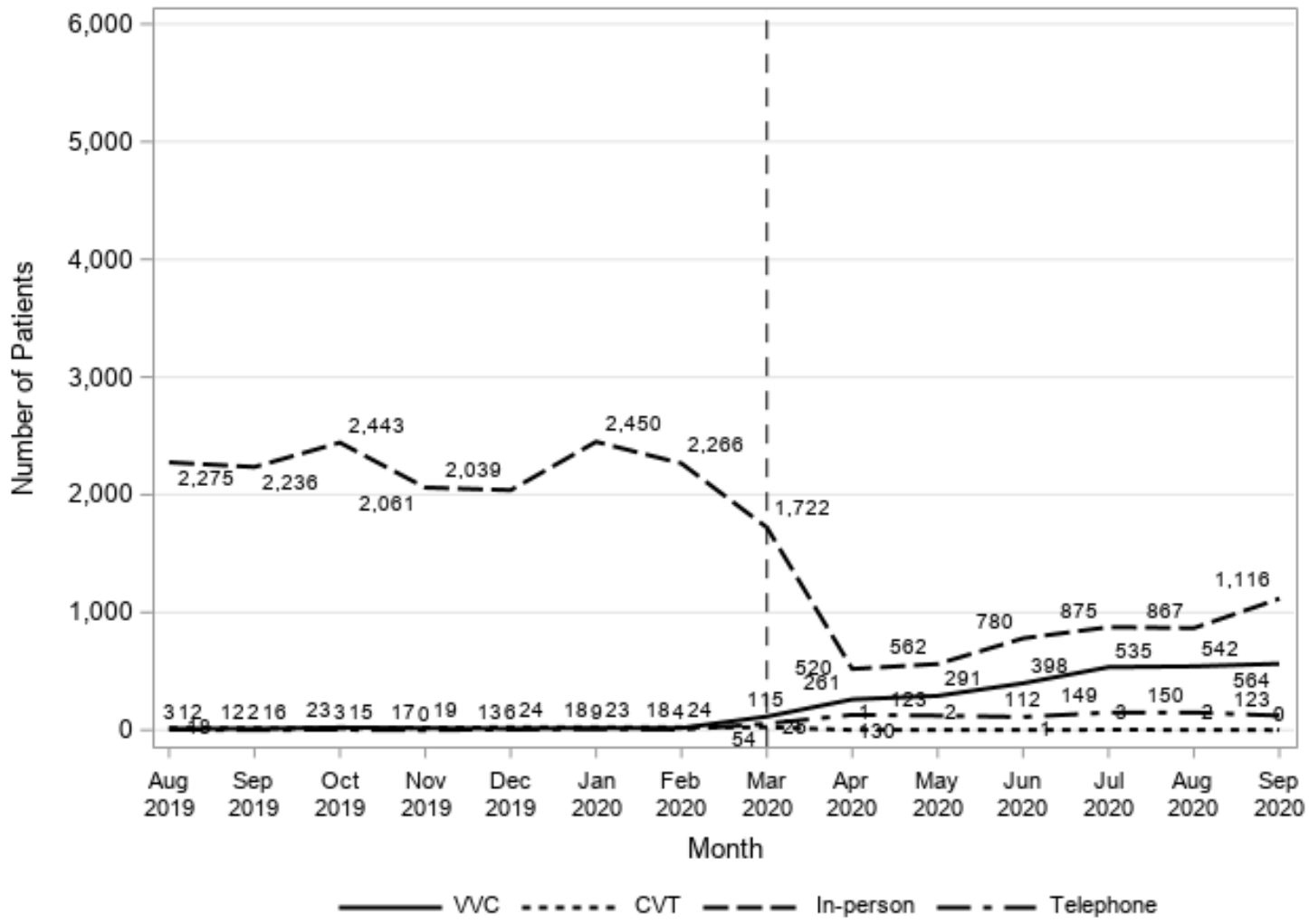


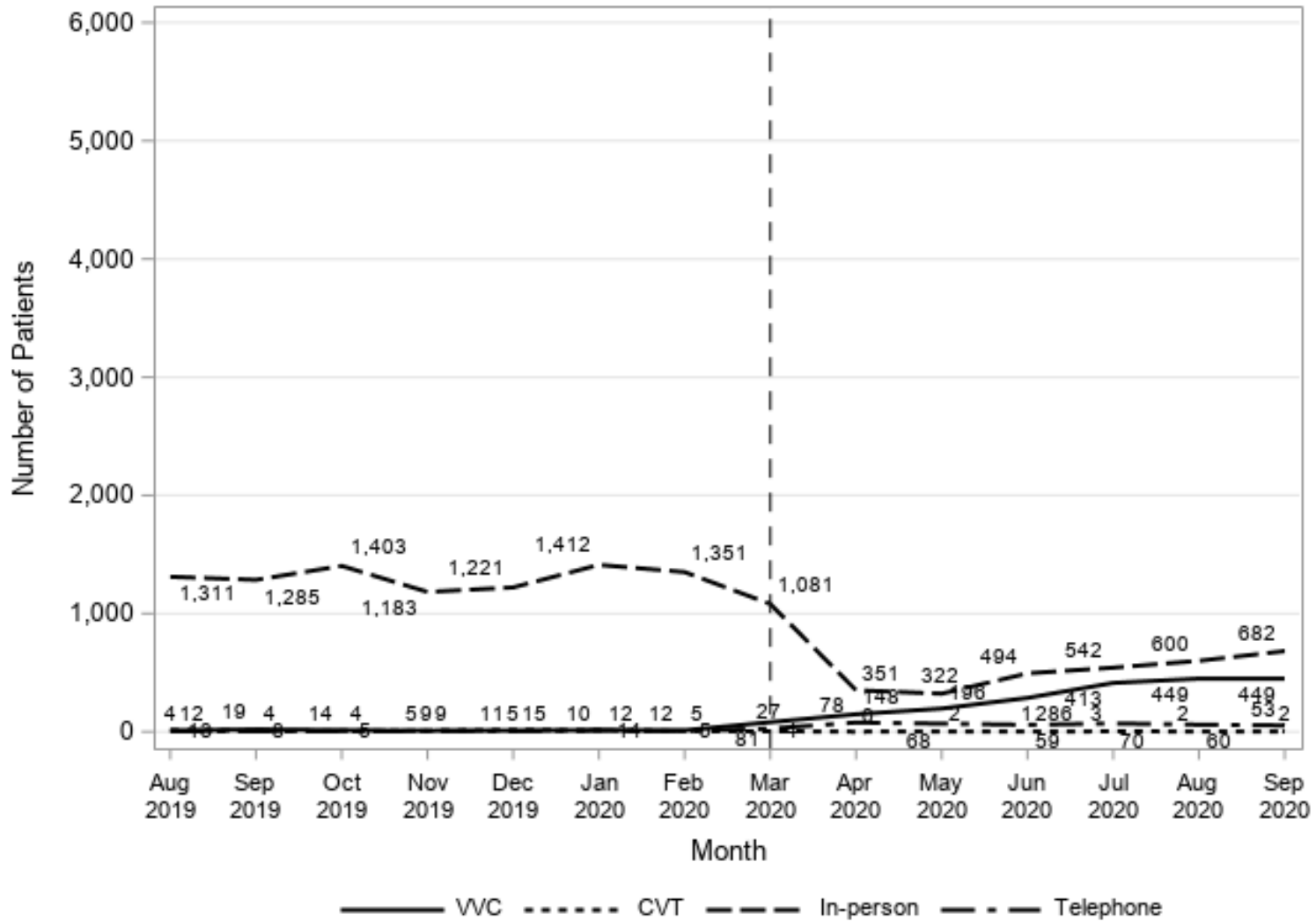
Figure S3 - Monthly number of patients who had in-person or telehealth appointment, stratified by race/ethnicity



NHB



Hispanic



Other

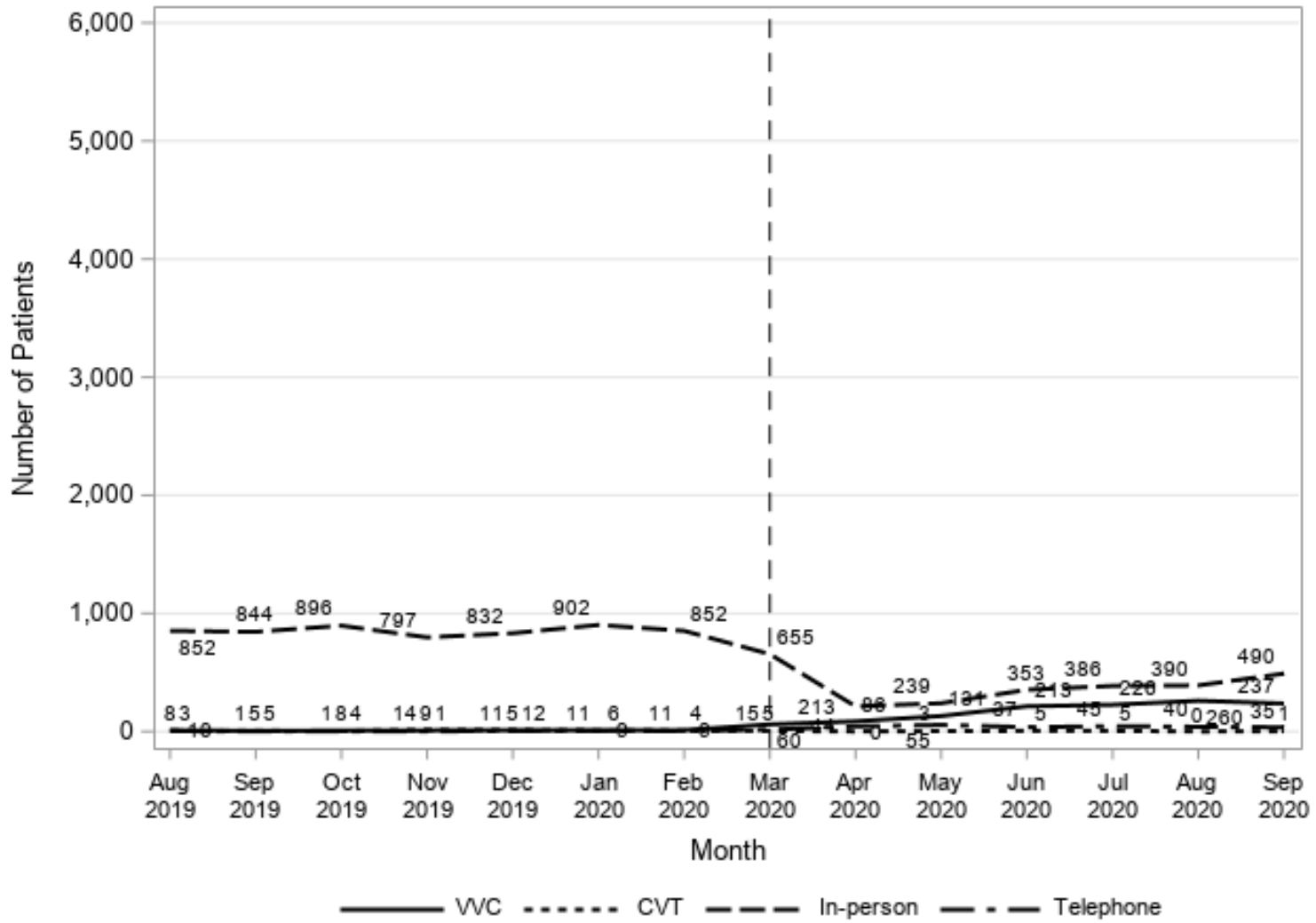
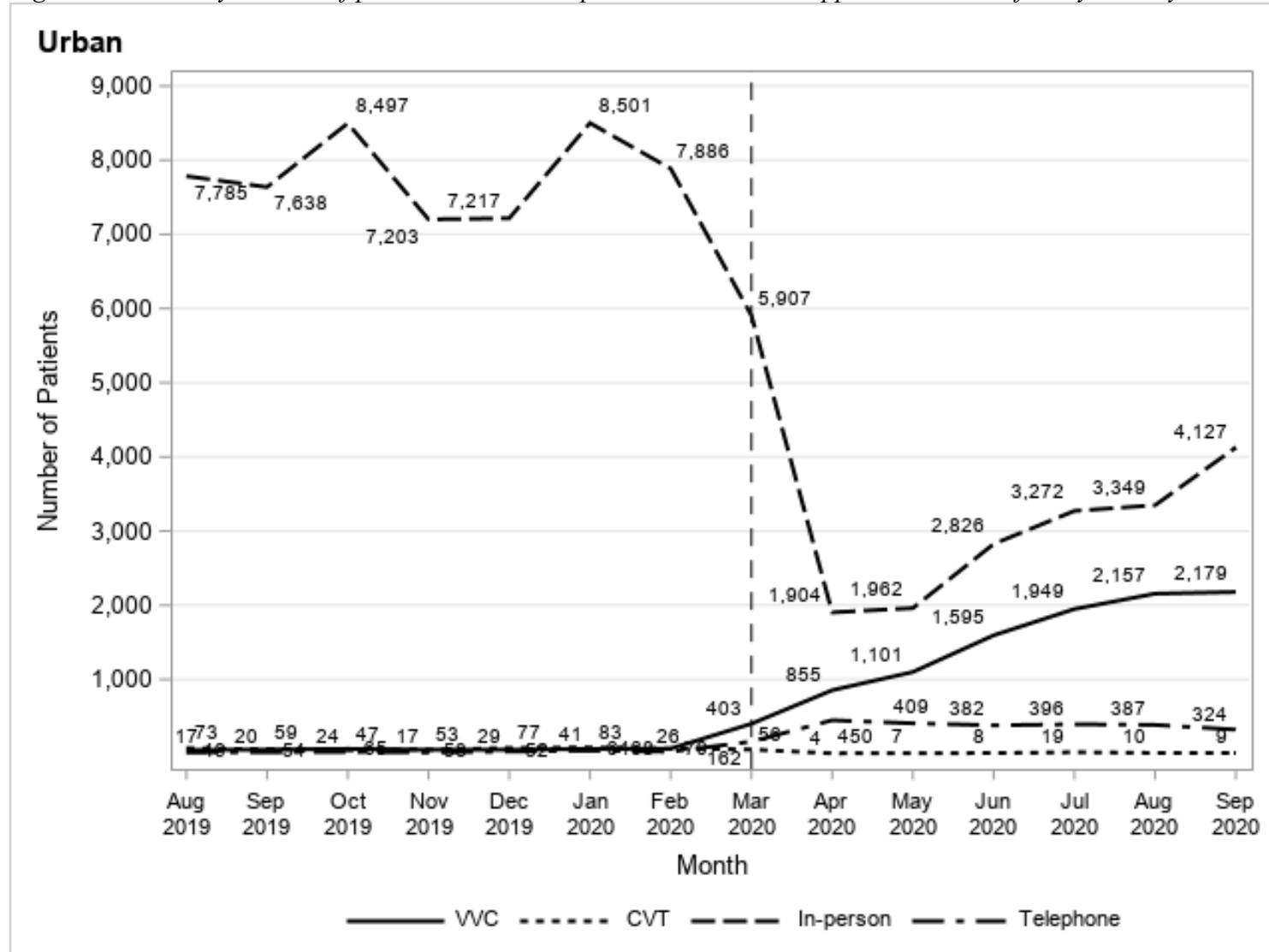


Figure S4 - Monthly number of patients who had in-person or telehealth appointment, stratified by rurality



Rural

