

European Respiratory Society Statement on Long COVID-19 Follow-Up

Appendix A - Search strategies for each question

Question 1: Are there features of the acute disease characteristics which predict long term consequences?

Literature searching was conducted on 25.03.21. The search was run from database inception without any form of search limit and the results are recorded below.

Database	N
Ovid MEDLINE and MEDLINE In Process	3922
Cochrane CENTRAL	602
Total	4524
Duplicates Removed	138
Unique to Screen	4386

Database: MEDLINE(R) ALL

Host: OVID

Data Parameters: 1946 to March 24, 2021

Date Searched: 25.03.21

Hits: 3922

Strategy:

#	Searches	Results
1	exp COVID-19/	66505
2	exp SARS-CoV-2/	51748
3	(Coronavirus or corona virus or 2019 corona virus or corona virus disease or coronavirus disease or novel coronavirus or novel corona virus or wuhan coronavirus or wuhan corona virus or severe acute respiratory syndrome coronavirus 2 or covid-19 or covid19 or covid 19 or 2019nCoV or 2019-nCoV or 2019 nCoV or SARS-CoV-2 or SARS2 or SARS-CoV or SARS CoV 2 or SARS coronavirus 2 or SARS corona virus 2 or coronavirus disease 2019 or corona virus disease 2019).ti,ab,kw.	124989
4	(post-covid or postcovid or post covid or post SARS-CoV-2 or post-SARS-CoV-2 or post coronavirus or post corona virus or post-coronavirus).ti,ab,kw.	1001
5	1 or 2 or 3 or 4	127580
6	exp "Severity of Illness Index"/	261312
7	risk factors/	857901
8	critical care outcomes/ or patient reported outcome measures/	7867
9	Prognosis/	528576
10	(severe disease or disease severity or severity of disease or patient characteristic* or disease characteristic* or short term outcome* or short-term outcome* or short term prognos* or short-term prognos* or long term outcome* or long-term outcome* or long term prognos* or long-term prognos* or risk factor* or health correlates or risk score* or population* at risk or outcome measure* or critical care outcome*).ti,ab,kw.	1042515
11	6 or 7 or 8 or 9 or 10	2168626
12	exp Overweight/	228188
13	exp Body Fat Distribution/	15448
14	body mass index/	131726

15	(obese or obesity or overweight or excess* body fat or excess* fat or adipos* or body fat or visceral fat or BMI or body mass index).ti,ab,kw.	579970
16	Diabetes Mellitus/	120622
17	(Diabetes or diabetes Mellitus or type 2 diabetes or diabetes type 2 or type 1 diabetes or diabetes type 1 or diabetic*).ti,ab,kw.	664149
18	Dyslipidemias/	12260
19	(Dyslipidemia* or dyslipoproteinemia*).ti,ab,kw.	31594
20	Smoking/	142173
21	(Smoking or smoker*).ti,ab,kw.	263237
22	Hypertension, Pulmonary/ or Pulmonary Arterial Hypertension/	35783
23	(Pulmonary arterial hypertension or PAH or arterial hypertension or high blood pressure).ti,ab,kw.	72259
24	exp Pulmonary Disease, Chronic Obstructive/	57727
25	(Chronic Obstructive Lung Disease* or Chronic Obstructive Pulmonary Disease* or COAD or COPD or Chronic Obstructive Airway Disease* or Chronic Airflow Obstruction*).ti,ab,kw.	71329
26	exp Continental Population Groups/	226865
27	(race* or racial or ethnicit*).ti,ab,kw.	219273
28	Sex Factors/	269954
29	(Male* or female* or gender*).ti,ab,kw.	1932450
30	Age Factors/	459971
31	(age* or old* or young* or adult* or child* or adolescen* or youth* or senior* or elderly).ti,ab,kw.	6697497
32	Neoplasms/	436474
33	Carcinoma/	90213
34	Sarcoma/	31583
35	Leukemia/	57815
36	Lymphoma/	51717
37	Multiple Myeloma/	41578
38	Melanoma/	86548
39	(malignant disease* or malignan* or carcinoma or cancer or sarcoma or leukemia or melanoma or lymphoma or multiple myeloma or melanoma or malignant tumor or malignant tumour).ti,ab,kw.	2896317
40	Comorbidity/	113758
41	comorbidit*.ti,ab,kw.	139767
42	Critical Care/	54275
43	(critical care or intensive care).ti,ab,kw.	176447
44	12 or 13 or 14 or 15 or 16 or 17 or 18 or 19 or 20 or 21 or 22 or 23 or 24 or 25 or 26 or 27 or 28 or 29 or 30 or 31 or 32 or 33 or 34 or 35 or 36 or 37 or 38 or 39 or 40 or 41 or 42 or 43	10782973
45	5 and 11 and 44	8844
46	Cohort Studies/	279867
47	incidence.tw.	782126
48	Mortality/	46218
49	Follow-Up Studies/	658634
50	prognos*.tw.	643067
51	predict*.tw.	1678985
52	course.tw.	574056
53	Survival Analysis/	139120
54	46 or 47 or 48 or 49 or 50 or 51 or 52 or 53	4020951

Database: Cochrane Library

Host: <http://www.thecochranelibrary.com>

Data Parameters: Issue 3 of 12, March 2021

Date Searched: 25.03.21

Hits: 634 - Cochrane Central Register of Controlled Trials: 602

Strategy:

- | ID | Search Hits | |
|-----|--|--------|
| #1 | MeSH descriptor: [COVID-19] explode all trees | 257 |
| #2 | MeSH descriptor: [SARS-CoV-2] explode all trees | 204 |
| #3 | ((Coronavirus or corona virus or 2019 corona virus or corona virus disease or coronavirus disease or novel coronavirus or novel corona virus or wuhan coronavirus or wuhan corona virus or severe acute respiratory syndrome coronavirus 2 or covid-19 or covid19 or covid 19 or "2019nCoV" or "2019-nCoV" or "2019 nCoV" or "SARS-CoV-2" or "SARS2" or "SARS-CoV" or "SARS CoV 2" or "SARS coronavirus 2" or "SARS corona virus 2" or "coronavirus disease 2019" or "corona virus disease 2019")):ti,ab,kw (Word variations have been searched) | 4522 |
| #4 | ((post-covid or postcovid or post covid or post SARS-CoV-2 or post-SARS-CoV-2 or post coronavirus or post corona virus or post-coronavirus)):ti,ab,kw (Word variations have been searched) | 501 |
| #5 | #1 OR #2 OR #3 OR #4 | 4526 |
| #6 | MeSH descriptor: [Severity of Illness Index] explode all trees | 20203 |
| #7 | MeSH descriptor: [Risk Factors] this term only | 24693 |
| #8 | MeSH descriptor: [Critical Care Outcomes] this term only | 2 |
| #9 | MeSH descriptor: [Patient Reported Outcome Measures] this term only | 679 |
| #10 | MeSH descriptor: [Prognosis] this term only | 13685 |
| #11 | ((severe disease or disease severity or severity of disease or patient characteristic* or disease characteristic* or short term outcome* or short-term outcome* or short term prognos* or short-term prognos* or long term outcome* or long-term outcome* or long term prognos* or long-term prognos* or risk factor* or health correlates or risk score* or population* at risk or outcome measure* or critical care outcome*)):ti,ab,kw (Word variations have been searched) | 537728 |
| #12 | #6 or #7 or #8 or #9 or #10 or #11 | 549298 |
| #13 | MeSH descriptor: [Overweight] explode all trees | 16785 |
| #14 | MeSH descriptor: [Body Fat Distribution] explode all trees | 934 |
| #15 | MeSH descriptor: [Body Mass Index] this term only | 10238 |
| #16 | ((obese or obesity or overweight or excess* body fat or excess* fat or adipos* or body fat or visceral fat or BMI or body mass index)):ti,ab,kw (Word variations have been searched) | 100132 |
| #17 | MeSH descriptor: [Diabetes Mellitus] this term only | 9852 |
| #18 | ((Diabetes or diabetes Mellitus or type 2 diabetes or diabetes type 2 or type 1 diabetes or diabetes type 1 or diabetic*)):ti,ab,kw (Word variations have been searched) | 96418 |
| #19 | MeSH descriptor: [Dyslipidemias] this term only | 1253 |
| #20 | ((Dyslipidemia* or dyslipoproteinemia*)):ti,ab,kw (Word variations have been searched) | 5547 |
| #21 | MeSH descriptor: [Dyslipidemias] this term only | 1253 |
| #22 | ((Smoking or smoker*)):ti,ab,kw (Word variations have been searched) | 37190 |
| #23 | MeSH descriptor: [Hypertension, Pulmonary] this term only | 981 |
| #24 | MeSH descriptor: [Pulmonary Arterial Hypertension] this term only | 15 |
| #25 | ((Pulmonary arterial hypertension or PAH or arterial hypertension or high blood pressure)):ti,ab,kw (Word variations have been searched) | 37805 |
| #26 | MeSH descriptor: [Pulmonary Disease, Chronic Obstructive] explode all trees | 5838 |

- #27 ((Chronic Obstructive Lung Disease* or Chronic Obstructive Pulmonary Disease* or COAD or COPD or Chronic Obstructive Airway Disease* or Chronic Airflow Obstruction*)):ti,ab,kw (Word variations have been searched) 21851
- #28 MeSH descriptor: [Continental Population Groups] explode all trees 6593
- #29 ((race* or racial or ethnicit*)):ti,ab,kw (Word variations have been searched) 17043
- #30 MeSH descriptor: [Sex Factors] this term only 5906
- #31 ((Male* or female* or gender*)):ti,ab,kw (Word variations have been searched) 871081
- #32 MeSH descriptor: [Age Factors] this term only 9185
- #33 ((age* or old* or young* or adult* or child* or adolescen* or youth* or senior* or elderly)):ti,ab,kw (Word variations have been searched) 1115441
- #34 MeSH descriptor: [Neoplasms] this term only 6242
- #35 MeSH descriptor: [Carcinoma] this term only 2850
- #36 MeSH descriptor: [Sarcoma] this term only 542
- #37 MeSH descriptor: [Leukemia] this term only 1690
- #38 MeSH descriptor: [Lymphoma] this term only 1349
- #39 MeSH descriptor: [Multiple Myeloma] this term only 1624
- #40 MeSH descriptor: [Melanoma] this term only 1829
- #41 ((malignant disease* or malignan* or carcinoma or cancer or sarcoma or leukemia or melanoma or lymphoma or multiple myeloma or melanoma or malignant tumor or malignant tumour)):ti,ab,kw (Word variations have been searched) 207931
- #42 MeSH descriptor: [Comorbidity] this term only 3560
- #43 ((comorbidit*)):ti,ab,kw (Word variations have been searched) 19377
- #44 MeSH descriptor: [Critical Care] this term only 1753
- #45 ((critical care or intensive care)):ti,ab,kw (Word variations have been searched) 45510
- #46 #13 or #14 or #15 or #16 or #17 or #18 or #19 or #20 or #21 or #22 or #23 or #24 or #25 or #26 or #27 or #28 or #29 or #30 or #31 or #32 or #33 or #34 or #35 or #36 or #37 or #38 or #39 or #40 or #41 or #42 or #43 or #44 or #45 1301461
- #47 #5 AND #12 AND #46 2071
- #48 MeSH descriptor: [Cohort Studies] this term only 7230
- #49 (incidence) (Word variations have been searched) 130605
- #50 MeSH descriptor: [Mortality] this term only 586
- #51 MeSH descriptor: [Follow-Up Studies] this term only 59600
- #52 ((prognos* or predict* or course)) (Word variations have been searched) 197325
- #53 MeSH descriptor: [Survival Analysis] this term only 8203
- #54 #48 or #49 or #50 or #51 or #52 or #53 344335
- #55 #47 AND #54 634

Question 2: What are the follow-up strategies related to thromboembolic events?

Literature searching was conducted on 19.03.21. The search was run from database inception without any form of search limit and the results are recorded below.

Database	N
Ovid MEDLINE and MEDLINE In Process	1078
Cochrane CENTRAL	103
Total	1181
Duplicates Removed	23
Unique to Screen	1158

Database: MEDLINE(R) ALL

Host: OVID

Data Parameters: 1946 to March 18, 2021

Date Searched: 19.03.21

Hits: 1078

Strategy:

#	Searches	Results
1	exp COVID-19/	65527
2	exp SARS-CoV-2/	51064
3	(Coronavirus or corona virus or 2019 corona virus or corona virus disease or coronavirus disease or novel coronavirus or novel corona virus or wuhan coronavirus or wuhan corona virus or severe acute respiratory syndrome coronavirus 2 or covid-19 or covid19 or covid 19 or 2019nCoV or 2019-nCoV or 2019 nCoV or SARS-CoV-2 or SARS2 or SARS-CoV or SARS CoV 2 or SARS coronavirus 2 or SARS corona virus 2 or coronavirus disease 2019 or corona virus disease 2019).ti,ab,kw.	123165
4	(post-covid or postcovid or post covid or post SARS-CoV-2 or post-SARS-CoV-2 or post coronavirus or post corona virus or post-coronavirus).ti,ab,kw.	981
5	1 or 2 or 3 or 4	125683
6	exp Pulmonary Embolism/	39805
7	exp Hypertension, Pulmonary/	37283
8	exp Thromboembolism/	57877
9	(pulmonary thrombo* or pulmonary emboli* or deep vein thrombo* or deep venous thrombo* or DVT or chronic thromboembolic pulmonary hypertension or thromboembolic pulmonary hypertension or CTEPH or post-PE syndrome or post PE syndrome or post-pulmonary embolism syndrome or post pulmonary embolism syndrome or blood clot* or thromboemboli*).ti,ab,kw.	119603
10	6 or 7 or 8 or 9	194490
11	exp Anticoagulants/	225807
12	exp Thrombelastography/	5409
13	(anticoagulant* or anticoagulant management or thrombelastograph* or thromboelastograph* or TEG or heparin* or LMWH or dalteparin* or tedelparin* or FR-860 or FR860 or Kabi-2165 or Kabi2165 or fragmin* or enoxaparin* or PK-10-169 or PK-10169 or PK10169 or EMT-967 or lovenox or clexan* or EMT-966 or nadroparin* or fraxiparin* or CY-216 or CY216 or Tinzaparin* or 3-phenyl-2-propenoic-acid or innohep or anticoagula* or anti coagula* or bm-2123 or bm2123 or choay or ebpm* or ff1034 or ff-1034 or gag-869 or gag869 or pk-007 or pk007 or sandoz 5100 or sandoz 6700 or traxyparin* or adomiparin* or m118 or m-118 or antixarin* or ardeparin* or normifio or normiflo or wy-90493 or wy90493 or bemiparin* or entervit or hepadren* or hibor or ivor or ivorat or ivormax or phivor or zibor or certoparin* or arteven or badyket or einecs 232-681-7 or eparina or mono emborex or monoemborex or op-622 or op622 or op-386 or op386 or pabyrin* or pulari or sandoparin* or sublingual or troparin* or vitrum a or cy-222 or cy222 or k-2165 or k2165 or low liquemin* or danaparoid or danaproid or kb-101 or kb101 or lomoparan or lomoparin* or mucoglucuronan or org-10172 or org10172 or orgaran or deligoparin* or op-2000 or op2000 or emborex or inhixa or klexane or ledraxen or neoparin* or qualiop klinik or thorinane or fondaparin* or arixtra or ic-851589 or ic851589 or org-31540 or org31540 or quixidar or sr-90107 or sr-90107a or sr90107 or sr90107a or idrabiotaparinux or ssr-126517 or ssr-126517-e or ssr126517 or ssr126517e or idraparinux or org-34006 or org34006 or sanorg 34006 or sanorg34006 or sr-34006 or sr34006 or livaraparin calcium or minolteparin* or cy-216d or cy216d or fraxodi or seledie or seleparin* or tedegliparin* or necuparanib or df-01 or df01 or m-402 or m402 or	189629

	tafoxiparin* or parnaparin* or fluxum or lohepa or lowhepa or minidaltan or op-2123 or op2123 or parvoparin* or rd-11885 or rd11885 or reviparin* or clivarin* or clivarodi or lomorin* or lu-47311 or lu47311 or semuloparin* or ave-5026 or ave5026 or mulsevo or visamerin* or sevuparin* or lhn1 or lhn-1 or logiparin*).ti,ab,kw.	
14	11 or 12 or 13	320140
15	Tomography/	10834
16	exp Tomography, X-Ray/	451345
17	Ultrasonography/	184082
18	((chest or lung or thorax or thoracic) adj3 (CT or CT scan* or computerized tomography or computerised tomography or computerized tomography scan* or computerised tomography scan* or CAT or CAT scan* or computerized axial tomography or computerised axial tomography or computerized axial tomography scan* or computerised axial tomography scan* or HRCT or high resolution CT or high resolution computerised tomography or high resolution computerized tomography or high resolution computerised tomography scan* or high resolution computerized tomography scan* or imag* or radiograph* or x-ray or X-radiation)).ti,ab,kw.	72820
19	((chest or lung or thorax or thoracic) adj3 (ultrasound or ultrasonogra* or ultrasonic* or sonograph* or sonogram*)).ti,ab,kw.	4535
20	Echocardiography/	90705
21	(echocardiogra* or ventilation scan* or perfusion scan* or CT pulmonary angiogra* or pulmonary angiogra* or computed tomography pulmonary angiogra* or computed tomography angiogra*).ti,ab,kw.	172489
22	(cardiopulmonary exercise test* or exercise capacity or d-dimer* or CTPA or CTPE or pulmonary function test* or PFT* or lung function test* or pulmonary physiolog* test* or CPET or cardiopulmonary exercise testing or 6-min walk* test or 6 min walk* test or 6min walk* test or 6 mwt or CPX or DLCO or diffusing capacity for carbon monoxide or diffusing capacity of the lungs for carbon monoxide or TLCO or gas transfer or spiometr*).ti,ab,kw.	75212
23	15 or 16 or 17 or 18 or 19 or 20 or 21 or 22	912610
24	14 or 23	1210170
25	5 and 10 and 24	1078

Database: Cochrane Library

Host: <http://www.thecochranelibrary.com>

Data Parameters: Issue 3 of 12, March 2021

Date Searched: 19.03.21

Hits: 104 - Cochrane Central Register of Controlled Trials: 103

Strategy:

ID Search Hits

#1 MeSH descriptor: [COVID-19] explode all trees 257

#2 MeSH descriptor: [SARS-CoV-2] explode all trees 204

#3 ((Coronavirus or corona virus or 2019 corona virus or corona virus disease or coronavirus disease or novel coronavirus or novel corona virus or wuhan coronavirus or wuhan corona virus or severe acute respiratory syndrome coronavirus 2 or covid-19 or covid19 or covid 19 or "2019nCoV" or "2019-nCoV" or "2019 nCoV" or "SARS-CoV-2" or "SARS2" or "SARS-CoV" or "SARS CoV 2" or "SARS coronavirus 2" or "SARS corona virus 2" or "coronavirus disease 2019" or "corona virus disease 2019")):ti,ab,kw (Word variations have been searched) 4521

#4 ((post-covid or postcovid or post covid or post SARS-CoV-2 or post-SARS-CoV-2 or post coronavirus or post corona virus or post-coronavirus)):ti,ab,kw (Word variations have been searched)500

#5 #1 OR #2 OR #3 OR #4 4525

- #6 MeSH descriptor: [Pulmonary Embolism] explode all trees 1043
- #7 MeSH descriptor: [Hypertension, Pulmonary] explode all trees 1189
- #8 MeSH descriptor: [Thromboembolism] explode all trees 2125
- #9 ((pulmonary thrombo* or pulmonary emboli* or deep vein thrombo* or deep venous thrombo* or DVT or chronic thromboembolic pulmonary hypertension or thromboembolic pulmonary hypertension or CTEPH or post-PE syndrome or post PE syndrome or post-pulmonary embolism syndrome or post pulmonary embolism syndrome or blood clot* or thromboemboli*)):ti,ab,kw (Word variations have been searched) 23781
- #10 #6 OR #7 OR #8 OR #9 25120
- #11 MeSH descriptor: [Anticoagulants] explode all trees 4699
- #12 MeSH descriptor: [Thrombelastography] explode all trees 246
- #13 ((anticoagulant* OR "anticoagulant management" OR thrombelastograph* OR thromboelastograph* OR TEG OR heparin* OR LMWH OR dalteparin* OR tedelparin* OR FR-860 OR FR860 OR Kabi-2165 OR Kabi2165 OR fragmin* OR enoxaparin* OR "PK-10-169" OR PK-10169 OR PK10169 OR EMT-967 OR lovenox OR clexan* OR EMT-966 OR nadroparin* OR fraxiparin* OR CY-216 OR CY216 OR Tinzaparin* OR "3-phenyl-2-propenoic-acid" OR innohep OR anticoagula* OR anti coagula* OR bm-2123 OR bm2123 OR choay OR ebpm* OR ff1034 OR ff-1034 OR gag-869 OR gag869 OR pk-007 OR pk007 OR sandoz 5100 OR sandoz 6700 OR traxyparin* OR adomiparin* OR m118 OR m-118 OR antixarin* OR ardeparin* OR normifio OR normiflo OR wy-90493 OR wy90493 OR bemiparin* OR entervit OR hepadren* OR hibor OR ivor OR ivorat OR ivormax OR phivor OR zibor OR certoparin* OR arteven OR badyket OR "einecs 232-681-7" OR eparina OR "mono emborex" OR monoemborex OR op-622 OR op622 OR op-386 OR op386 OR pabyrin* OR pulari OR sandoparin* OR sublingula OR troparin* OR "vitrum a" OR "cy-222" OR cy222 OR "k-2165" OR k2165 OR "low liquemin*" OR danaparoid OR danaproid OR "kb-101" OR kb101 OR lomoparan OR lomoparin* OR mucoglucuronan OR "org-10172" OR org10172 OR orgaran OR deligoparin* OR "op-2000" OR op2000 OR emborex OR inhixa OR klexane OR ledraxen OR neoparin* OR "qualiop klinik" OR thorinane OR fondoparin* OR arixtra OR "ic-851589" OR ic851589 OR "org-31540" OR org31540 OR quixidar OR "sr-90107" OR "sr-90107a" OR sr90107 OR "sr90107a" OR idrabiotaparinux OR "ssr-126517" OR "ssr-126517-e" OR "ssr126517" OR "ssr126517e" OR idraparinux OR "org-34006" OR org34006 OR "sanorg 34006" OR sanorg34006 OR "sr-34006" OR sr34006 OR "livaraparin calcium" OR minolteparin* OR "cy-216d" OR cy216d OR fraxodi OR seledie OR seleparin* OR tedegliparin* OR necuparanib OR "df-01" OR df01 OR "m-402" OR m402 OR tafoxiparin* OR parnaparin* OR fluxum OR lohepa OR lowhepa OR minidaltan OR "op-2123" OR op2123 OR parvoparin* OR "rd-11885" OR rd11885 OR reviparin* OR clivarin* OR clivarodi OR lomorin* OR "lu-47311" OR lu47311 OR semuloparin* OR "ave-5026" OR ave5026 OR mulsevo OR visamerin* OR sevuparin* OR lhn1 OR "lhn-1" OR logiparin*)):ti,ab,kw (Word variations have been searched) 25371
- #14 #11 OR #12 OR #13 25557
- #15 MeSH descriptor: [Tomography] this term only 94
- #16 MeSH descriptor: [Tomography Scanners, X-Ray Computed] explode all trees 41
- #17 MeSH descriptor: [Ultrasonography] this term only 4777
- #18 (((chest or lung or thorax or thoracic) NEAR/3 (CT or CT scan* or computerized tomography or computerised tomography or computerized tomography scan* or computerised tomography scan* or CAT or CAT scan* or computerized axial tomography or computerised axial tomography or computerized axial tomography scan* or computerised axial tomography scan* or HRCT or high resolution CT or high resolution computerised tomography or high resolution computerized tomography or high resolution computerised tomography scan* or high resolution computerized tomography scan* or imag* or radiograph* or x-ray or X-radiation)):ti,ab,kw (Word variations have been searched) 8467
- #19 (((chest or lung or thorax or thoracic) NEAR/3 (ultrasound or ultrasonogra* or ultrasonic* or sonograph* or sonogram*)):ti,ab,kw (Word variations have been searched) 775
- #20 MeSH descriptor: [Echocardiography] this term only 2638

- #21 ((echocardiogra* or ventilation scan* or perfusion scan* or CT pulmonary angiogra* or pulmonary angiogra* or computed tomography pulmonary angiogra* or computed tomography angiogra*)):ti,ab,kw (Word variations have been searched) 18273
- #22 ((cardiopulmonary exercise test* or exercise capacity or d-dimer* or CTPA or CTPE or pulmonary function test* or PFT* or lung function test* or pulmonary physiolog* test* or CPET or cardiopulmonary exercise testing or "6-min walk* test" or "6 min walk* test" or "6min walk* test" or 6 mwt or CPX or DLCO or diffusing capacity for carbon monoxide or diffusing capacity of the lungs for carbon monoxide or TLCO or gas transfer or spirometr*)):ti,ab,kw (Word variations have been searched) 37818
- #23 #15 or #16 or #17 or #18 or #19 or #20 or #21 or #22 65242
- #24 #14 or #23 88529
- #25 #5 and #10 and #24 104

Question 3: What are the follow-up strategies related to pulmonary physiology?

Literature searching was conducted on 24.03.21. The search was run from database inception without any form of search limit and the results are recorded below.

Database	N
Ovid MEDLINE and MEDLINE In Process	1178
Cochrane CENTRAL	400
Total	1578
Duplicates Removed	48
Unique to Screen	1530

Database: MEDLINE(R) ALL

Host: OVID

Data Parameters: 1946 to March 23, 2021

Date Searched: 24.03.21

Hits: 1178

Strategy:

#	Searches	Results
1	exp COVID-19/	66643
2	exp SARS-CoV-2/	51893
3	(Coronavirus or corona virus or 2019 corona virus or corona virus disease or coronavirus disease or novel coronavirus or novel corona virus or wuhan coronavirus or wuhan corona virus or severe acute respiratory syndrome coronavirus 2 or covid-19 or covid19 or covid 19 or 2019nCoV or 2019-nCoV or 2019 nCoV or SARS-CoV-2 or SARS2 or SARS-CoV or SARS CoV 2 or SARS coronavirus 2 or SARS corona virus 2 or coronavirus disease 2019 or corona virus disease 2019).ti,ab,kw.	124877
4	(post-covid or postcovid or post covid or post SARS-CoV-2 or post-SARS-CoV-2 or post coronavirus or post corona virus or post-coronavirus).ti,ab,kw.	996
5	1 or 2 or 3 or 4	127470
6	Physiology/	24037
7	exp Respiratory Physiological Phenomena/	234780
8	(physiolog* or pathophysiol* or ((lung* or pulmonary or airway* or respiratory or breath* or alveol*) adj8 (complian* or ventilat* or circulat* or elimination or function* or mechan* or control* or fail* or process* or system* or properties or physiolog* or impair* or abnormal*))).ti,ab,kw.	1320620
9	6 or 7 or 8	1468628
10	exp Respiratory Function Tests/	238245

11	(pulmonary function test* or PFT* or lung function test* or respiratory management or pulmonary management or lung management or airway management or pulmonary physiolog* test* or CPET or cardiopulmonary exercise test* or 6-min walk* test or 6 min walk* test* or 6min walk* test* or 6 mwt or exercise test* or CPX or DLCO or diffusing capacity or TLCO or gas transfer or airway resistance or blood gas analysis or bronchial provocation test* or bronchial challenge test* or airway provocation test* or exercise test* or lung compliance or lung volume* or total lung capacity or maximal respiratory pressures or plethysmograph* or gas exchange or diffus* capacity or spiometr* or valsalva maneuver or ventilation-perfusion scan or ventilation perfusion scan or ventilation-perfusion ratio or ventilation perfusion ratio or oximetry or bronchspirometry or scintigraph*).ti,ab,kw.	195513
12	10 or 11	356073
13	Tomography/	10840
14	exp Tomography, X-Ray/	451581
15	Ultrasonography/	184174
16	((chest or lung or thorax or thoracic) adj3 (CT or CT scan* or computerized tomography or computerised tomography or computerized tomography scan* or computerised tomography scan* or CAT or CAT scan* or computerized axial tomography or computerised axial tomography or computerized axial tomography scan* or computerised axial tomography scan* or HRCT or high resolution CT or high resolution computerised tomography or high resolution computerized tomography or high resolution computerised tomography scan* or high resolution computerized tomography scan* or imag* or radiograph* or x-ray or X-radiation)).ti,ab,kw.	72934
17	((chest or lung or thorax or thoracic) adj3 (ultrasound or ultrasonogra* or ultrasonic* or sonograph* or sonogram*)).ti,ab,kw.	4549
18	13 or 14 or 15 or 16 or 17	675308
19	12 or 18	1007680
20	5 and 9 and 19	1178

Database: Cochrane Library

Host: <http://www.thecochranelibrary.com>

Data Parameters: Issue 3 of 12, March 2021

Date Searched: 24.03.21

Hits: 404 - Cochrane Central Register of Controlled Trials: 400

Strategy:

ID Search Hits

#1 MeSH descriptor: [COVID-19] explode all trees 257

#2 MeSH descriptor: [SARS-CoV-2] explode all trees 204

#3 ((Coronavirus or corona virus or 2019 corona virus or corona virus disease or coronavirus disease or novel coronavirus or novel corona virus or wuhan coronavirus or wuhan corona virus or severe acute respiratory syndrome coronavirus 2 or covid-19 or covid19 or covid 19 or "2019nCoV" or "2019-nCoV" or "2019 nCoV" or "SARS-CoV-2" or "SARS2" or "SARS-CoV" or "SARS CoV 2" or "SARS coronavirus 2" or "SARS corona virus 2" or "coronavirus disease 2019" or "corona virus disease 2019")):ti,ab,kw (Word variations have been searched) 4521

#4 ((post-covid or postcovid or post covid or post SARS-CoV-2 or post-SARS-CoV-2 or post coronavirus or post corona virus or post-coronavirus)):ti,ab,kw (Word variations have been searched)500

#5 #1 OR #2 OR #3 OR #4 4525

#6 MeSH descriptor: [Physiology] this term only 39

- #7 MeSH descriptor: [Respiratory Physiological Phenomena] explode all trees
16231
- #8 ((physiolog* or pathophysiol* or ((lung* or pulmonary or airway* or respiratory or breath* or alveol*) NEAR/8 (complian* or ventilat* or circulat* or elimination or function* or mechan* or control* or fail* or process* or system* or properties or physiolog* or impair* or abnormal*)))):ti,ab,kw (Word variations have been searched) 191916
- #9 #6 or #7 or #8 197534
- #10 MeSH descriptor: [Respiratory Function Tests] explode all trees 24056
- #11 ((pulmonary function test* or PFT* or lung function test* or respiratory management or pulmonary management or lung management or airway management or pulmonary physiolog* test* or CPET or cardiopulmonary exercise test* or "6-min walk* test" or "6 min walk* test*" or "6min walk* test*" or 6 mwt or exercise test* or CPX or DLCO or diffusing capacity or TLCO or gas transfer or airway resistance or blood gas analysis or bronchial provocation test* or bronchial challenge test* or airway provocation test* or exercise test* or lung compliance or lung volume* or total lung capacity or maximal respiratory pressures or plethysmograph* or gas exchange or diffus* capacity or spiometr* or valsalva maneuver or ventilation-perfusion scan or ventilation perfusion scan or ventilation-perfusion ratio or ventilation perfusion ratio or oximetry or bronchspirometry or scintigraph*)):ti,ab,kw (Word variations have been searched) 103908
- #12 #10 or #11 107280
- #13 MeSH descriptor: [Tomography] this term only 94
- #14 MeSH descriptor: [Tomography, X-Ray] explode all trees 5094
- #15 MeSH descriptor: [Ultrasonography] this term only 4777
- #16 (((chest or lung or thorax or thoracic) NEAR/3 (CT or CT scan* or computerized tomography or computerised tomography or computerized tomography scan* or computerised tomography scan* or CAT or CAT scan* or computerized axial tomography or computerised axial tomography or computerized axial tomography scan* or computerised axial tomography scan* or HRCT or high resolution CT or high resolution computerised tomography or high resolution computerized tomography or high resolution computerised tomography scan* or high resolution computerized tomography scan* or imag* or radiograph* or x-ray or X-radiation))):ti,ab,kw (Word variations have been searched) 8467
- #17 (((chest or lung or thorax or thoracic) NEAR/3 (ultrasound or ultrasonogra* or ultrasonic* or sonograph* or sonogram*)):ti,ab,kw (Word variations have been searched) 775
- #18 #13 or #14 or #15 or #16 or #17 18024
- #19 #12 or #18 121718
- #20 #5 and #9 and #19 404

Question 4: What are the follow-up strategies related to imaging?

Literature searching was conducted on 20.03.21. The search was run from database inception without any form of search limit and the results are recorded below.

Database	N
Ovid MEDLINE and MEDLINE In Process	1110
Cochrane CENTRAL	190
Total	1300
Duplicates Removed	37
Unique to Screen	1263

Database: MEDLINE(R) ALL

Host: OVID

Data Parameters: 1946 to March 19, 2021

Date Searched: 20.03.21

Hits: 1110

Strategy:

#	Searches	Results
1	exp COVID-19/	65973
2	exp SARS-CoV-2/	51401
3	(Coronavirus or corona virus or 2019 corona virus or corona virus disease or coronavirus disease or novel coronavirus or novel corona virus or wuhan coronavirus or wuhan corona virus or severe acute respiratory syndrome coronavirus 2 or covid-19 or covid19 or covid 19 or 2019nCoV or 2019-nCoV or 2019 nCoV or SARS-CoV-2 or SARS2 or SARS-CoV or SARS CoV 2 or SARS coronavirus 2 or SARS corona virus 2 or coronavirus disease 2019 or corona virus disease 2019).ti,ab,kw.	123557
4	(post-covid or postcovid or post covid or post SARS-CoV-2 or post-SARS-CoV-2 or post coronavirus or post corona virus or post-coronavirus).ti,ab,kw.	985
5	1 or 2 or 3 or 4	126094
6	Tomography/	10836
7	exp Tomography, X-Ray/	451427
8	Ultrasonography/	184105
9	((chest or lung or thorax or thoracic) adj3 (CT or CT scan* or computerized tomography or computerised tomography or computerized tomography scan* or computerised tomography scan* or CAT or CAT scan* or computerized axial tomography or computerised axial tomography or computerized axial tomography scan* or computerised axial tomography scan* or HRCT or high resolution CT or high resolution computerised tomography or high resolution computerized tomography or high resolution computerised tomography scan* or high resolution computerized tomography scan* or imag* or radiograph* or x-ray or X-radiation)).ti,ab,kw.	72855
10	((chest or lung or thorax or thoracic) adj3 (ultrasound or ultrasonogra* or ultrasonic* or sonograph* or sonogram*)).ti,ab,kw.	4539
11	6 or 7 or 8 or 9 or 10	675012
12	exp Pulmonary Fibrosis/	24328
13	exp Lung Diseases, Interstitial/	56919
14	(pulmonary fibros* or lung fibros* or lung disease or interstitial lung disease or lung damage or pulmonary damage or fibros* or pulmonary vascular or pulmonary vascular lesion* or pulmonary lesion* or vascular lesion* or lung lesion* or alveol* or parenchymal bands or irregular interfaces or traction bronchiectasis or honeycombing or honeycomb lung or ground-glass or ground glass or ground-glass opaci* or ground glass opaci* or interstitial thickening or ILD or inflammatory interstitial lung disease).ti,ab,kw.	396269
15	12 or 13 or 14	444239
16	5 and 11 and 15	1110

Database: Cochrane Library

Host: <http://www.thecochranelibrary.com>

Data Parameters: Issue 3 of 12, March 2021

Date Searched: 20.03.21

Hits: 192 - Cochrane Central Register of Controlled Trials: 190

Strategy:

ID Search Hits

#1 MeSH descriptor: [COVID-19] explode all trees 257

#2 MeSH descriptor: [SARS-CoV-2] explode all trees 204

- #3 ((Coronavirus or corona virus or 2019 corona virus or corona virus disease or coronavirus disease or novel coronavirus or novel corona virus or wuhan coronavirus or wuhan corona virus or severe acute respiratory syndrome coronavirus 2 or covid-19 or covid19 or covid 19 or "2019nCoV" or "2019-nCoV" or "2019 nCoV" or "SARS-CoV-2" or "SARS2" or "SARS-CoV" or "SARS CoV 2" or "SARS coronavirus 2" or "SARS corona virus 2" or "coronavirus disease 2019" or "corona virus disease 2019")):ti,ab,kw (Word variations have been searched) 4521
- #4 ((post-covid or postcovid or post covid or post SARS-CoV-2 or post-SARS-CoV-2 or post coronavirus or post corona virus or post-coronavirus)):ti,ab,kw (Word variations have been searched)500
- #5 #1 OR #2 OR #3 OR #4 4525
- #6 MeSH descriptor: [Tomography] this term only 94
- #7 MeSH descriptor: [Tomography Scanners, X-Ray Computed] explode all trees 41
- #8 MeSH descriptor: [Ultrasonography] this term only 4777
- #9 (((chest or lung or thorax or thoracic) NEAR/3 (CT or CT scan* or computerized tomography or computerised tomography or computerized tomography scan* or computerised tomography scan* or CAT or CAT scan* or computerized axial tomography or computerised axial tomography or computerized axial tomography scan* or computerised axial tomography scan* or HRCT or high resolution CT or high resolution computerised tomography or high resolution computerized tomography or high resolution computerised tomography scan* or high resolution computerized tomography scan* or imag* or radiograph* or x-ray or X-radiation))):ti,ab,kw (Word variations have been searched) 8467
- #10 (((chest or lung or thorax or thoracic) NEAR/3 (ultrasound or ultrasonogra* or ultrasonic* or sonograph* or sonogram*))):ti,ab,kw (Word variations have been searched) 775
- #11 #6 or #7 or #8 or #9 or #10 13754
- #12 MeSH descriptor: [Pulmonary Fibrosis] explode all trees 564
- #13 MeSH descriptor: [Lung Diseases, Interstitial] explode all trees 778
- #14 ((pulmonary fibros* or lung fibros* or lung disease or interstitial lung disease or lung damage or pulmonary damage or fibros* or pulmonary vascular or pulmonary vascular lesion* or pulmonary lesion* or vascular lesion* or lung lesion* or alveol* or parenchymal bands or irregular interfaces or traction bronchiectasis or honeycombing or honeycomb lung or ground-glass or ground glass or ground glass opaci* or ground glass opaci* or interstitial thickening or ILD or inflammatory interstitial lung disease)):ti,ab,kw (Word variations have been searched)64200
- #15 #12 or #13 or #14 64438
- #16 #5 and #11 and #15 192

Question 5: What are the follow-up strategies related to infection control?

Literature searching was conducted on 26.03.21. The search was run from database inception without any form of search limit and the results are recorded below.

Database	N
Ovid MEDLINE and MEDLINE In Process	817
Cochrane CENTRAL	17
Total	834
Duplicates Removed	19
Unique to Screen	815

Database: MEDLINE(R) ALL

Host: OVID

Data Parameters: 1946 to March 25, 2021

Date Searched: 26.03.21

Hits: 817

Strategy:

#	Searches	Results
1	exp COVID-19/	66730
2	exp SARS-CoV-2/	51921
3	(Coronavirus or corona virus or 2019 corona virus or corona virus disease or coronavirus disease or novel coronavirus or novel corona virus or wuhan coronavirus or wuhan corona virus or severe acute respiratory syndrome coronavirus 2 or covid-19 or covid19 or covid 19 or 2019nCoV or 2019-nCoV or 2019 nCoV or SARS-CoV-2 or SARS2 or SARS-CoV or SARS CoV 2 or SARS coronavirus 2 or SARS corona virus 2 or coronavirus disease 2019 or corona virus disease 2019).ti,ab,kw.	125387
4	(post-covid or postcovid or post covid or post SARS-CoV-2 or post-SARS-CoV-2 or post coronavirus or post corona virus or post-coronavirus).ti,ab,kw.	1007
5	1 or 2 or 3 or 4	127992
6	exp COVID-19 Testing/	4673
7	Serologic Tests/	20881
8	Serology/	944
9	Viral Load/	35028
10	antibodies/ or antibodies, viral/	177999
11	exp T-Lymphocytes/	335495
12	(serolog* or antibod* or viral load or t-cell* or t cell* or t-lymphocyte* or t lymphocyte* or immunodiagnostic* or immune-diagnostic or immunoglobulins or IgG or IgM or nucleic acid amplification or nucleic acid test* or NAT or NAATS).ti,ab,kw.	1397816
13	(polymerase chain reaction or PCR or RT-PCR or reverse transcription polymerase chain reaction or home test* or rapid lateral flow or rapid antigen test* or nasal swab* or nasopharyngeal swab* or throat swab* or saliva or upper respiratory tract specimen* or self-swab* or self swab*).ti,ab,kw.	717260
14	exp Polymerase Chain Reaction/	453819
15	(contact trac* or immunis* or immuniz* or vacinat* or antisepsis or patient isolation or physical distanc* or quarantin* or self isolat* or self-isolat* or shield* or protect* or lock down or lockdown).ti,ab,kw.	1000228
16	exp Disease Transmission, Infectious/	73324
17	exp communicable disease control/ or exp infection control/	359385
18	primary prevention/	19015
19	Reinfection/	85
20	Cross Infection/	57924
21	((infectio* or disease or virus or viral) adj6 (control* or battle* or prevent* or surveil* or precaution* or transmission or spread*)).ti,ab,kw.	432264
22	((control* or prevent*) adj3 measur*).ti,ab,kw.	98352
23	(immunity or reinfection or re-infection or quantif*).ti,ab,kw.	711332
24	6 or 7 or 8 or 9 or 10 or 11 or 12 or 13 or 14 or 15 or 16 or 17 or 18 or 19 or 20 or 21 or 22 or 23	4307457
25	exp Immunosuppression/	61367
26	(immunosuppress* or anti-reject* therap* or anti reject* therap* or antireject* therap*).ti,ab,kw.	156348
27	exp Transplantation/	525682
28	(transplant* or living donor* or tissue donor* or histocompatibility test* or organ preservation solution*).ti,ab,kw.	484508

29	drug therapy/ or chemotherapy, adjuvant/ or consolidation chemotherapy/ or induction chemotherapy/	75846
30	Antineoplastic Agents/	288259
31	(chemotherap* or chemo or oncolog* or drug* therap* or cancer treatment* or antineoplastic* or anti tumor drug* or anti-tumor drug* or antitumor drug* or anti tumor agent* or anti-tumor agent* or antitumor agent* or pharmacotherap* or chemotherapeutic* or anticancer drug* or anti cancer drug* or anticancer drug* or anticancer agent* or anti cancer agent* or anti-cancer agent* or anti tumour drug* or anti-tumour drug* or antitumour drug* or anti tumour agent* or anti-tumour agent* or antitumour agent*).ti,ab,kw.	777228
32	exp Autoimmune Diseases/	488479
33	(Autoimmune Disease* or rheumatolog* or addison disease or autoimmune hemolytic anemia or anti-glomerular basement membrane disease or antineutrophil cytoplasmic antibody associated vasculitis or antiphospholipid syndrome or juvenile arthritis or rheumatoid arthritis or autoimmune hypophysitis or autoimmune lymphoproliferative syndrome or autoimmune pancreatitis or birdshot chorioretinopathy or dermatitis herpetiformis or diabetes mellitus type 1 or type 1 diabetes mellitus or diabetes mellitus insulin-dependent, 1 or insulin-dependent diabetes mellitus 1 or insulin dependent diabetes mellitus 1 or type 1 diabetes or glomerulonephritis or graves disease or autoimmune hepatitis or immunoglobulin G4-related disease or latent autoimmune diabetes or linear IgA bullous dermatosis or lupus or sympathetic ophthalmia or bullous pemphigoid or autoimmune polyendocrinopathies or idiopathic thrombocytopenic purpura or autoimmune thyroiditis or undifferentiated connective tissue disease*).ti,ab,kw.	356782
34	exp Immunologic Deficiency Syndromes/	337720
35	(immune deficienc* or Immunodeficienc* or Agammaglobulinemia or CVID or Dysgammaglobulinemia or IgA Deficiency or IgG Deficiency or HIV or Acute Retroviral Syndrome or AIDS or Deltaretrovirus or Enzootic Bovine Leukosis or HTLV-I Infections or HTLV-II Infections or Lymphopenia or Idiopathic CD4-Positive T-Lymphocytopenia or Wiskott-Aldrich Syndrome or Phagocyte Bactericidal Dysfunction or Ataxia Telangiectasia or Bloom Syndrome or Chediak-Higashi Syndrome or Hereditary Complement Deficiency Disease* or Job Syndrome or Leukocyte-Adhesion Deficiency Syndrome).ti,ab,kw.	471458
36	exp Hematologic Diseases/	566766
37	(Haematologic* disease* or Hematologic* disease* or hematolog* or haematolog* or anemia or anaemia or blood coagulation disorder* or blood platelet disorder* or blood protein disorder* or bone marrow disease* or fetal erythroblastosis or hemoglobinopath* or haemoglobinopath* or hemorrhagic disorder* or haemorrhagic disorder* or leukocyte disorder* or methemoglobinemia or pancytopenia or polycythemia or preleukemia or sulfhemoglobinemia or thrombophilia or transfusion reaction*).ti,ab,kw.	302388
38	25 or 26 or 27 or 28 or 29 or 30 or 31 or 32 or 33 or 34 or 35 or 36 or 37	3320647
39	5 and 24 and 38	4458
40	(guideline* or guidance or recommend* or (practice adj2 (guide*1 or recommend* or standard*)) or (decision* adj2 (making or make*)) or (evidence-based adj2 (practice* or medicine or nursing))).ti,ab. or exp Guidelines as topic/ or exp Guideline/	1334148
41	39 and 40	817

Host: <http://www.thecochranelibrary.com>

Data Parameters: Issue 3 of 12, March 2021

Date Searched: 26.03.21

Hits: 25 - Cochrane Central Register of Controlled Trials: 17

Strategy:

ID Search Hits

- #1 MeSH descriptor: [COVID-19] explode all trees 257
- #2 MeSH descriptor: [SARS-CoV-2] explode all trees 204
- #3 ((Coronavirus or corona virus or 2019 corona virus or corona virus disease or coronavirus disease or novel coronavirus or novel corona virus or wuhan coronavirus or wuhan corona virus or severe acute respiratory syndrome coronavirus 2 or covid-19 or covid19 or covid 19 or "2019nCoV" or "2019-nCoV" or "2019 nCoV" or "SARS-CoV-2" or "SARS2" or "SARS-CoV" or "SARS CoV 2" or "SARS coronavirus 2" or "SARS corona virus 2" or "coronavirus disease 2019" or "corona virus disease 2019")):ti,ab,kw (Word variations have been searched) 4523
- #4 ((post-covid or postcovid or post covid or post SARS-CoV-2 or post-SARS-CoV-2 or post coronavirus or post corona virus or post-coronavirus)):ti,ab,kw (Word variations have been searched)501
- #5 #1 OR #2 OR #3 OR #4 4527
- #6 MeSH descriptor: [COVID-19 Testing] explode all trees 7
- #7 MeSH descriptor: [Serologic Tests] this term only 198
- #8 MeSH descriptor: [Serology] this term only 5
- #9 MeSH descriptor: [Viral Load] this term only 2381
- #10 MeSH descriptor: [Antibodies] this term only 1677
- #11 MeSH descriptor: [Antibodies, Viral] this term only 2435
- #12 MeSH descriptor: [T-Lymphocytes] explode all trees 3385
- #13 ((serolog* or antibod* or viral load or t-cell* or t cell* or t-lymphocyte* or t lymphocyte* or immunodiagnostic* or immune-diagnostic or immunoglobulins or IgG or IgM or nucleic acid amplification or nucleic acid test* or NAT or NAATS)):ti,ab,kw (Word variations have been searched) 78187
- #14 ((polymerase chain reaction or PCR or RT-PCR or reverse transcription polymerase chain reaction or home test* or rapid lateral flow or rapid antigen test* or nasal swab* or nasopharyngeal swab* or throat swab* or saliva or upper respiratory tract specimen* or self-swab* or self swab*)):ti,ab,kw (Word variations have been searched) 40239
- #15 MeSH descriptor: [Polymerase Chain Reaction] explode all trees 2076
- #16 ((contact trac* or immunis* or immuniz* or vacinat* or antisepsis or patient isolation or physical distanc* or quarantin* or self isolat* or self-isolat* or shield* or protect* or lock down or lockdown)):ti,ab,kw (Word variations have been searched) 73596
- #17 MeSH descriptor: [Disease Transmission, Infectious] explode all trees 866
- #18 MeSH descriptor: [Communicable Disease Control] explode all trees 5056
- #19 MeSH descriptor: [Infection Control] explode all trees 1186
- #20 MeSH descriptor: [Primary Prevention] this term only 875
- #21 MeSH descriptor: [Reinfection] this term only 1
- #22 MeSH descriptor: [Cross Infection] this term only 1170
- #23 (((infectio* or disease or virus or viral) NEAR/6 (control* or battle* or prevent* or surveil* or precaution* or transmission or spread*))) :ti,ab,kw (Word variations have been searched) 140791
- #24 (((control* or prevent*) NEAR/3 measur*)):ti,ab,kw (Word variations have been searched) 12290
- #25 ((immunity or reinfection or re-infection or quantif*)):ti,ab,kw (Word variations have been searched)62003
- #26 #6 or #7 or #8 or #9 or #10 or #11 or #12 or #13 or #14 or #15 or #16 or #17 or #18 or #19 or #20 or #21 or #22 or #23 or #24 or #25 324379
- #27 MeSH descriptor: [Immunosuppression] explode all trees 2061
- #28 ((immunosuppress* or anti-reject* therap* or anti reject* therap* or antireject* therap*)):ti,ab,kw (Word variations have been searched) 15007

- #29 MeSH descriptor: [Transplantation] explode all trees 11847
- #30 ((transplant* or living donor* or tissue donor* or histocompatibility test* or organ preservation solution*)):ti,ab,kw (Word variations have been searched) 40233
- #31 MeSH descriptor: [Drug Therapy] this term only 348
- #32 MeSH descriptor: [Chemotherapy, Adjuvant] this term only 3894
- #33 MeSH descriptor: [Consolidation Chemotherapy] this term only 95
- #34 MeSH descriptor: [Induction Chemotherapy] this term only 395
- #35 MeSH descriptor: [Antineoplastic Agents] this term only 6791
- #36 ((chemotherap* or chemo or oncolog* or drug* therap* or cancer treatment* or antineoplastic* or anti tumor drug* or anti-tumor drug* or antitumor drug* or anti tumor agent* or anti-tumor agent* or antitumor agent* or pharmacotherap* or chemotherapeutic* or anticancer drug* or anti cancer drug* or anticancer drug* or anticancer agent* or anti cancer agent* or anti-cancer agent* or anti tumour drug* or anti-tumour drug* or antitumour drug* or anti tumour agent* or anti-tumour agent* or antitumour agent*)):ti,ab,kw (Word variations have been searched) 554359
- #37 MeSH descriptor: [Autoimmune Diseases] explode all trees 18922
- #38 ((Autoimmune Disease* or rheumatolog* or addison disease or autoimmune hemolytic anemia or anti-glomerular basement membrane disease or antineutrophil cytoplasmic antibody associated vasculitis or antiphospholipid syndrome or juvenile arthritis or rheumatoid arthritis or autoimmune hypophysitis or autoimmune lymphoproliferative syndrome or autoimmune pancreatitis or birdshot chorioretinopathy or dermatitis herpetiformis or diabetes mellitus type 1 or type 1 diabetes mellitus or diabetes mellitus insulin-dependent, 1 or insulin-dependent diabetes mellitus 1 or insulin dependent diabetes mellitus 1 or type 1 diabetes or glomerulonephritis or graves disease or autoimmune hepatitis or "immunoglobulin G4-related disease" or latent autoimmune diabetes or linear IgA bullous dermatosis or lupus or sympathetic ophthalmia or bullous pemphigoid or autoimmune polyendocrinopathies or idiopathic thrombocytopenic purpura or autoimmune thyroiditis or undifferentiated connective tissue disease*)):ti,ab,kw (Word variations have been searched) 76593
- #39 MeSH descriptor: [Immunologic Deficiency Syndromes] explode all trees 13054
- #40 ((immune deficienc* or Immunodeficienc* or Agammaglobulinemia or CVID or Dysgammaglobulinemia or IgA Deficiency or IgG Deficiency or HIV or Acute Retroviral Syndrome or AIDS or Deltaretrovirus or Enzootic Bovine Leukosis or "HTLV-I Infections" or "HTLV-II Infections" or Lymphopenia or "Idiopathic CD4-Positive T-Lymphocytopenia" or Wiskott-Aldrich Syndrome or Phagocyte Bactericidal Dysfunction or Ataxia Telangiectasia or Bloom Syndrome or Chediak-Higashi Syndrome or Hereditary Complement Deficiency Disease* or Job Syndrome or Leukocyte-Adhesion Deficiency Syndrome)):ti,ab,kw (Word variations have been searched) 47481
- #41 MeSH descriptor: [Hematologic Diseases] explode all trees 14656
- #42 ((Haematologic* disease* or Hematologic* disease* or hematolog* or haematolog* or anemia or anaemia or blood coagulation disorder* or blood platelet disorder* or blood protein disorder* or bone marrow disease* or fetal erythroblastosis or hemoglobinopath* or haemoglobinopath* or hemorrhagic disorder* or haemorrhagic disorder* or leukocyte disorder* or methemoglobinemia or pancytopenia or polycythemia or preleukemia or sulfhemoglobinemia or thrombophilia or transfusion reaction*)):ti,ab,kw (Word variations have been searched) 53703
- #43 #27 or #28 or #29 or #30 or #31 or #32 or #33 or #34 or #35 or #36 or #37 or #38 or #39 or #40 or #41 or #42 667449
- #44 #5 AND #26 AND 43 113
- #45 ((guideline* or guidance or recommend* or (practice NEAR/2 (guide*1 or recommend* or standard*)) or (decision* NEAR/2 (making or make*)) or (evidence-based NEAR/2 (practice* or medicine or nursing)))):ti,ab,kw (Word variations have been searched) 132452
- #46 MeSH descriptor: [Guidelines as Topic] explode all trees 1918
- #47 MeSH descriptor: [Guideline] explode all trees 0
- #48 #45 or #46 or #47 132453

Question 6: What are the follow-up strategies related to cognitive, psychological and quality of life consequences?

Literature searching was conducted on 20.03.21. The search was run from database inception without any form of search limit and the results are recorded below.

Database	N
Ovid MEDLINE and MEDLINE In Process	852
Cochrane CENTRAL	550
Total	1402
Duplicates Removed	45
Unique to Screen	1357

Database: MEDLINE(R) ALL

Host: OVID

Data Parameters: 1946 to March 19, 2021

Date Searched: 20.03.21

Hits: 852

Strategy:

#	Searches	Results
1	exp COVID-19/	65973
2	exp SARS-CoV-2/	51401
3	(Coronavirus or corona virus or 2019 corona virus or corona virus disease or coronavirus disease or novel coronavirus or novel corona virus or wuhan coronavirus or wuhan corona virus or severe acute respiratory syndrome coronavirus 2 or covid-19 or covid19 or covid 19 or 2019nCoV or 2019-nCoV or 2019 nCoV or SARS-CoV-2 or SARS2 or SARS-CoV or SARS CoV 2 or SARS coronavirus 2 or SARS corona virus 2 or coronavirus disease 2019 or corona virus disease 2019).ti,ab,kw.	123557
4	(post-covid or postcovid or post covid or post SARS-CoV-2 or post-SARS-CoV-2 or post coronavirus or post corona virus or post-coronavirus).ti,ab,kw.	985
5	1 or 2 or 3 or 4	126094
6	exp Psychology/	67972
7	exp psychological phenomena/	1912115
8	exp Emotions/	255177
9	Stress, Psychological/	124135
10	exp Stress Disorders, Traumatic/	38147
11	Anhedonia/	1109
12	Depression/	125390
13	Frailty/	3777
14	Psychophysics/	14193
15	psychosocial functioning/	70
16	patient reported outcome measures/	7727
17	(cogniti* or psycholog* or frailty or depress* or anxiety or functional impairment* or mental health or psychophysics* or psychosocial or posttraumatic or post-traumatic stress or post traumatic stress or PTSD or post traumatic stress disorder* or post-traumatic stress disorder* or mental wellbeing or mental well-being or anhedonia* or stress disorder* or emotion* or feel* or debilit* or trauma* or quality of life or QOL or health-	2070329

	related quality of life or HRQOL or patient-reported outcome* or patient reported outcome* or PROMS).ti,ab,kw.	
18	6 or 7 or 8 or 9 or 10 or 11 or 12 or 13 or 14 or 15 or 16 or 17	3568145
19	health status indicators/	23735
20	"Outcome and Process Assessment, Health Care"/	27787
21	Outcome Assessment, Health Care/	75358
22	quality of life/	205980
23	outcome measure*.tw.	238320
24	health outcome*.tw.	57119
25	19 or 20 or 21 or 22 or 23 or 24	579040
26	5 and 18 and 25	852

Database: Cochrane Library

Host: <http://www.thecochranelibrary.com>

Data Parameters: Issue 3 of 12, March 2021

Date Searched: 20.03.21

Hits: 578 - Cochrane Central Register of Controlled Trials: 550

Strategy:

ID Search Hits

#1 MeSH descriptor: [COVID-19] explode all trees 257

#2 MeSH descriptor: [SARS-CoV-2] explode all trees 204

#3 ((Coronavirus or corona virus or 2019 corona virus or corona virus disease or coronavirus disease or novel coronavirus or novel corona virus or wuhan coronavirus or wuhan corona virus or severe acute respiratory syndrome coronavirus 2 or covid-19 or covid19 or covid 19 or "2019nCoV" or "2019-nCoV" or "2019 nCoV" or "SARS-CoV-2" or "SARS2" or "SARS-CoV" or "SARS CoV 2" or "SARS coronavirus 2" or "SARS corona virus 2" or "coronavirus disease 2019" or "corona virus disease 2019")):ti,ab,kw (Word variations have been searched) 4521

#4 ((post-covid or postcovid or post covid or post SARS-CoV-2 or post-SARS-CoV-2 or post coronavirus or post corona virus or post-coronavirus)):ti,ab,kw (Word variations have been searched)500

#5 #1 OR #2 OR #3 OR #4 4525

#6 MeSH descriptor: [Psychology] explode all trees 1068

#7 MeSH descriptor: [Psychological Phenomena] explode all trees 90089

#8 MeSH descriptor: [Emotions] explode all trees 17515

#9 MeSH descriptor: [Stress, Psychological] this term only 5881

#10 MeSH descriptor: [Stress Disorders, Traumatic] explode all trees 2828

#11 MeSH descriptor: [Anhedonia] this term only 58

#12 MeSH descriptor: [Depression] this term only 12583

#13 MeSH descriptor: [Frailty] this term only 152

#14 MeSH descriptor: [Psychophysics] this term only 438

#15 MeSH descriptor: [Psychosocial Functioning] this term only 0

#16 MeSH descriptor: [Patient Reported Outcome Measures] this term only 679

#17 ((cogniti* or psycholog* or frailty or depress* or anxiety or functional impairment* or mental health or psychophysics* or psychosocial or posttraumatic or post-traumatic stress or post traumatic stress or PTSD or post traumatic stress disorder* or post-traumatic stress disorder* or mental wellbeing or mental well-being or anhedonia* or stress disorder* or emotion* or feel* or debilit* or trauma* or quality of life or QOL or health-related quality of life or HRQOL or patient-reported outcome* or patient reported outcome* or PROMS)):ti,ab,kw (Word variations have been searched) 422516

#18 #6 or #7 or #8 or #9 or #10 or #11 or #12 or #13 or #14 or #15 or #16 or #17 460190

#19 MeSH descriptor: [Health Status Indicators] this term only 977

- #20 MeSH descriptor: [Outcome and Process Assessment, Health Care] this term only 2236
- #21 MeSH descriptor: [Outcome Assessment, Health Care] this term only 7634
- #22 MeSH descriptor: [Quality of Life] this term only 24676
- #23 (outcome measure*) (Word variations have been searched) 244043
- #24 (health outcome*) (Word variations have been searched) 159726
- #25 #19 or #20 or #21 or #22 or #23 or #24 318372
- #26 #5 AND #18 AND #25 578

Question 7: What are the follow-up strategies related to disability?

Literature searching was conducted on 21.03.21. The search was run from database inception without any form of search limit and the results are recorded below.

Database	N
Ovid MEDLINE and MEDLINE In Process	1019
Cochrane CENTRAL	102
Total	1121
Duplicates Removed	33
Unique to Screen	1088

Database: MEDLINE(R) ALL

Host: OVID

Data Parameters: 1946 to March 19, 2021

Date Searched: 21.03.21

Hits: 1019

Strategy:

#	Searches	Results
1	exp COVID-19/	65973
2	exp SARS-CoV-2/	51401
3	(Coronavirus or corona virus or 2019 corona virus or corona virus disease or coronavirus disease or novel coronavirus or novel corona virus or wuhan coronavirus or wuhan corona virus or severe acute respiratory syndrome coronavirus 2 or covid-19 or covid19 or covid 19 or 2019nCoV or 2019-nCoV or 2019 nCoV or SARS-CoV-2 or SARS2 or SARS-CoV or SARS CoV 2 or SARS coronavirus 2 or SARS corona virus 2 or coronavirus disease 2019 or corona virus disease 2019).ti,ab,kw.	123557
4	(post-covid or postcovid or post covid or post SARS-CoV-2 or post-SARS-CoV-2 or post coronavirus or post corona virus or post-coronavirus).ti,ab,kw.	985
5	1 or 2 or 3 or 4	126094
6	exp Disabled Persons/	66917
7	Health Services for Persons with Disabilities/	139
8	Frailty/	3777
9	frail*.ti,ab,kw.	25403
10	(disabilit* or disable*).ti,ab,kw.	217554
11	(physical* adj4 (impair* or function* or limitation*)).ti,ab,kw.	54645
12	(function* adj4 (impair* or limitation* or mobil*)).ti,ab,kw.	126491
13	(mobil* adj4 (limitation* or impair*)).ti,ab,kw.	5385
14	6 or 7 or 8 or 9 or 10 or 11 or 12 or 13	438183
15	exp "continuity of patient care"/ or exp rehabilitation/	377618
16	"Recovery of Function"/	54909

17	exp Physical Therapy Modalities/	158311
18	Rehabilitation Centers/	8326
19	Rehabilitation Nursing/	1427
20	(rehab* or recover* or physiotherap* or physical therap* or support* or care or caring or nursing or treatment* or telemedicine or tele-medicine or telerehabilitation or tele-rehabilitation or telehealth or tele-health or teleconsultation or tele-consultation).ti,ab,kw.	7704736
21	(activities of daily living or ADL).ti,ab,kw.	32321
22	15 or 16 or 17 or 18 or 19 or 20 or 21	7883920
23	5 and 14 and 22	1019

Database: Cochrane Library

Host: <http://www.thecochranelibrary.com>

Data Parameters: Issue 3 of 12, March 2021

Date Searched: 21.03.21

Hits: 108 - Cochrane Central Register of Controlled Trials: 102

Strategy:

ID Search Hits

- #1 MeSH descriptor: [COVID-19] explode all trees 257
- #2 MeSH descriptor: [SARS-CoV-2] explode all trees 204
- #3 ((Coronavirus or corona virus or 2019 corona virus or corona virus disease or coronavirus disease or novel coronavirus or novel corona virus or wuhan coronavirus or wuhan corona virus or severe acute respiratory syndrome coronavirus 2 or covid-19 or covid19 or covid 19 or "2019nCoV" or "2019-nCoV" or "2019 nCoV" or "SARS-CoV-2" or "SARS2" or "SARS-CoV" or "SARS CoV 2" or "SARS coronavirus 2" or "SARS corona virus 2" or "coronavirus disease 2019" or "corona virus disease 2019")):ti,ab,kw (Word variations have been searched) 4521
- #4 ((post-covid or postcovid or post covid or post SARS-CoV-2 or post-SARS-CoV-2 or post coronavirus or post corona virus or post-coronavirus)):ti,ab,kw (Word variations have been searched)500
- #5 #1 OR #2 OR #3 OR #4 4525
- #6 MeSH descriptor: [Disabled Persons] explode all trees 1170
- #7 MeSH descriptor: [Health Services for Persons with Disabilities] this term only 2
- #8 MeSH descriptor: [Frailty] this term only 152
- #9 (frail*) 4099
- #10 ((disabilit* or disable*)):ti,ab,kw (Word variations have been searched) 38750
- #11 ((physical* NEAR/4 (impair* or function* or limitation*)):ti,ab,kw (Word variations have been searched) 16397
- #12 ((function* NEAR/4 (impair* or limitation* or mobil*)):ti,ab,kw (Word variations have been searched) 15204
- #13 ((mobil* NEAR/4 (limitation* or impair*)):ti,ab,kw (Word variations have been searched) 1239
- #14 #6 or #7 or #8 or #9 or #10 or #11 or #12 or #13 68428
- #15 MeSH descriptor: [Continuity of Patient Care] explode all trees 25532
- #16 MeSH descriptor: [Rehabilitation] explode all trees 36425
- #17 MeSH descriptor: [Recovery of Function] this term only 5322
- #18 MeSH descriptor: [Physical Therapy Modalities] explode all trees 26166
- #19 MeSH descriptor: [Rehabilitation Centers] this term only 314
- #20 MeSH descriptor: [Rehabilitation Nursing] this term only 55
- #21 ((rehab* or recover* or physiotherap* or physical therap* or support* or care or caring or nursing or treatment* or telemedicine or tele-medicine or telerehabilitation or tele-rehabilitation or telehealth or tele-health or teleconsultation or tele-consultation)):ti,ab,kw (Word variations have been searched) 1007737

- #22 ((activities of daily living or ADL)):ti,ab,kw (Word variations have been searched)
15097
- #23 #15 or #16 or #17 or #18 or #19 or #20 or #21 or #22 1014577
- #24 #5 and #14 and #23 108

Question 8: What are the follow-up strategies related to home care follow-up (tele-medicine/tele-rehabilitation)?

Literature searching was conducted on 21.03.21. The search was run from database inception without any form of search limit and the results are recorded below.

Database	N
Ovid MEDLINE and MEDLINE In Process	1819
Cochrane CENTRAL	238
Total	2057
Duplicates Removed	54
Unique to Screen	2003

Database: MEDLINE(R) ALL

Host: OVID

Data Parameters: 1946 to March 19, 2021

Date Searched: 21.03.21

Hits: 1819

Strategy:

#	Searches	Results
1	exp COVID-19/	65973
2	exp SARS-CoV-2/	51401
3	(Coronavirus or corona virus or 2019 corona virus or corona virus disease or coronavirus disease or novel coronavirus or novel corona virus or wuhan coronavirus or wuhan corona virus or severe acute respiratory syndrome coronavirus 2 or covid-19 or covid19 or covid 19 or 2019nCoV or 2019-nCoV or 2019 nCoV or SARS-CoV-2 or SARS2 or SARS-CoV or SARS CoV 2 or SARS coronavirus 2 or SARS corona virus 2 or coronavirus disease 2019 or corona virus disease 2019).ti,ab,kw.	123557
4	(post-covid or postcovid or post covid or post SARS-CoV-2 or post-SARS-CoV-2 or post coronavirus or post corona virus or post-coronavirus).ti,ab,kw.	985
5	1 or 2 or 3 or 4	126094
6	exp Aftercare/	199451
7	exp Home Care Services/	48217
8	exp "continuity of patient care"/ or exp rehabilitation/	377618
9	exp Telemedicine/	33212
10	(homecare or home healthcare or home-visit or aftercare or continuity of care or continuity of patient care or telemedicine or tele-medicine or telerehabilitation or tele-rehabilitation or telehealth or tele-health or teleconsultation or tele-consultation or telepsychiatry or tele-psychiatry or telepractice or tele-practice or video consultation* or video visit* or video conferenc* or zoom or home nursing or mobile health or ehealth).ti,ab,kw.	50446
11	((home or home-based) adj6 (manag* or rehabilitat* or recover* or monitor* or support* or care*)).ti,ab,kw.	58934
12	6 or 7 or 8 or 9 or 10 or 11	501732
13	exp Disabled Persons/	66917
14	Health Services for Persons with Disabilities/	139

15	Frailty/	3777
16	(disabilit* or disable* or frail*).ti,ab,kw.	240373
17	(physical* adj4 (impair* or function* or limitation*)).ti,ab,kw.	54645
18	(function* adj4 (impair* or limitation* or mobil*)).ti,ab,kw.	126491
19	(mobil* adj4 (limitation* or impair*)).ti,ab,kw.	5385
20	13 or 14 or 15 or 16 or 17 or 18 or 19	438183
21	Ventilator Weaning/	4028
22	(ventilat* adj6 wean*).ti,ab,kw.	4661
23	ventilator-weaning.ti,ab,kw.	560
24	21 or 22 or 23	6870
25	exp Dyspnea/	22248
26	(dyspnea or dyspnoea or "air hunger" or breathless* or short* of breath).ti,ab,kw.	62772
27	25 or 26	71371
28	exp Fatigue/	31555
29	(fatigue* or tired* or lassitude).ti,ab,kw.	107326
30	28 or 29	115821
31	exp Sleep/	82219
32	exp Dyssomnias/	70681
33	(sleep* or dyssomina* or hypersom* or oxygen desaturation).ti,ab,kw.	196164
34	31 or 32 or 33	225712
35	exp Psychology/	67972
36	psychosocial functioning/	70
37	exp Psychological Phenomena/	1912115
38	exp Emotions/	255177
39	Stress, Psychological/	124135
40	exp Stress Disorders, Traumatic/	38147
41	Anhedonia/	1109
42	Depression/	125390
43	Psychophysics/	14193
44	(cogniti* or psycholog* or depress* or anxiety or mental health or psychophysics* or psychosocial or posttraumatic or post-traumatic stress or post traumatic stress or PTSD or post traumatic stress disorder* or post-traumatic stress disorder* or mental wellbeing or mental well-being or anhedonia* or stress disorder* or emotion* or feel*).ti,ab,kw.	1496954
45	35 or 36 or 37 or 38 or 39 or 40 or 41 or 42 or 43 or 44	3036458
46	20 or 24 or 27 or 30 or 34 or 45	3550222
47	5 and 12 and 46	1819

Database: Cochrane Library

Host: <http://www.thecochranelibrary.com>

Data Parameters: Issue 3 of 12, March 2021

Date Searched: 21.03.21

Hits: 245 - Cochrane Central Register of Controlled Trials: 238

Strategy:

ID Search Hits

#1 MeSH descriptor: [COVID-19] explode all trees 257

#2 MeSH descriptor: [SARS-CoV-2] explode all trees 204

#3 ((Coronavirus or corona virus or 2019 corona virus or corona virus disease or coronavirus disease or novel coronavirus or novel corona virus or wuhan coronavirus or

wuhan corona virus or severe acute respiratory syndrome coronavirus 2 or covid-19 or covid19 or covid 19 or "2019nCoV" or "2019-nCoV" or "2019 nCoV" or "SARS-CoV-2" or "SARS2" or "SARS-CoV" or "SARS CoV 2" or "SARS coronavirus 2" or "SARS corona virus 2" or "coronavirus disease 2019" or "corona virus disease 2019")):ti,ab,kw (Word variations have been searched) 4521

#4 ((post-covid or postcovid or post covid or post SARS-CoV-2 or post-SARS-CoV-2 or post coronavirus or post corona virus or post-coronavirus)):ti,ab,kw (Word variations have been searched)500

#5 #1 OR #2 OR #3 OR #4 4525

#6 MeSH descriptor: [Aftercare] explode all trees 23683

#7 MeSH descriptor: [Home Care Services] explode all trees 2463

#8 MeSH descriptor: [Continuity of Patient Care] explode all trees 25532

#9 MeSH descriptor: [Rehabilitation] explode all trees 36425

#10 MeSH descriptor: [Telemedicine] explode all trees 2708

#11 ((homecare or home healthcare or home-visit or aftercare or continuity of care or continuity of patient care or telemedicine or tele-medicine or telerehabilitation or tele-rehabilitation or telehealth or tele-health or teleconsultation or tele-consultation or telepsychiatry or tele-psychiatry or telepractice or tele-practice or video consultation* or video visit* or video conferenc* or zoom or home nursing or mobile health or ehealth)):ti,ab,kw (Word variations have been searched) 59525

#12 (((home or home-based) NEAR/6 (manag* or rehabilitat* or recover* or monitor* or support* or care*)):ti,ab,kw (Word variations have been searched) 14741

#13 #6 or #7 or #8 or #9 or #10 or #11 or #12 99681

#14 MeSH descriptor: [Disabled Persons] explode all trees 1170

#15 MeSH descriptor: [Health Services for Persons with Disabilities] this term only 2

#16 MeSH descriptor: [Frailty] this term only 152

#17 ((disabilit* or disable* or frail*)):ti,ab,kw (Word variations have been searched) 42064

#18 ((physical* NEAR/4 (impair* or function* or limitation*)):ti,ab,kw (Word variations have been searched) 16397

#19 ((function* NEAR/4 (impair* or limitation* or mobil*)):ti,ab,kw (Word variations have been searched) 15204

#20 ((mobil* NEAR/4 (limitation* or impair*)):ti,ab,kw (Word variations have been searched) 1239

#21 #14 or #15 or #16 or #17 or #18 or #19 or #20 68120

#22 MeSH descriptor: [Ventilator Weaning] this term only 516

#23 ((ventilat* NEAR/6 wean*)):ti,ab,kw (Word variations have been searched) 1586

#24 ((ventilator-weaning)):ti,ab,kw (Word variations have been searched) 797

#25 #22 or #23 or #24 1586

#26 MeSH descriptor: [Dyspnea] explode all trees 1304

#27 ((dyspnea or dyspnoea or "air hunger" or breathless* or short* of breath)):ti,ab,kw (Word variations have been searched) 16829

#28 #26 or #27 16829

#29 MeSH descriptor: [Fatigue] explode all trees 3799

#30 ((fatigue* or tired* or lassitude)):ti,ab,kw (Word variations have been searched) 35752

#31 #29 or #30 35752

#32 MeSH descriptor: [Sleep] explode all trees 5764

#33 MeSH descriptor: [Dyssomnias] explode all trees 6817

#34 ((sleep* or dyssomina* or hypersom* or oxygen desaturation)):ti,ab,kw (Word variations have been searched) 42358

#35 #32 or #33 or #34 42685

#36 MeSH descriptor: [Psychology] explode all trees 1068

#37 MeSH descriptor: [Psychosocial Functioning] this term only 0

#38 MeSH descriptor: [Psychological Phenomena] explode all trees 90089

#39 MeSH descriptor: [Emotions] explode all trees 17515
 #40 MeSH descriptor: [Stress, Psychological] this term only 5881
 #41 MeSH descriptor: [Stress Disorders, Traumatic] explode all trees 2828
 #42 MeSH descriptor: [Anhedonia] this term only 58
 #43 MeSH descriptor: [Depression] this term only 12583
 #44 MeSH descriptor: [Psychophysics] this term only 438
 #45 ((cogniti* or psycholog* or depress* or anxiety or mental health or psychophysics* or psychosocial or posttraumatic or post-traumatic stress or post traumatic stress or PTSD or post traumatic stress disorder* or post-traumatic stress disorder* or mental wellbeing or mental well-being or anhedonia* or stress disorder* or emotion* or feel*)):ti,ab,kw (Word variations have been searched) 258835
 #46 #36 or #37 or #38 or #39 or #40 or #41 or #42 or #43 or #44 or #45302385
 #47 #21 or #25 or #28 or #31 or #35 or #46 394001
 #48 #5 AND #13 AND #47 245

Appendix B – Eligibility criteria for each question

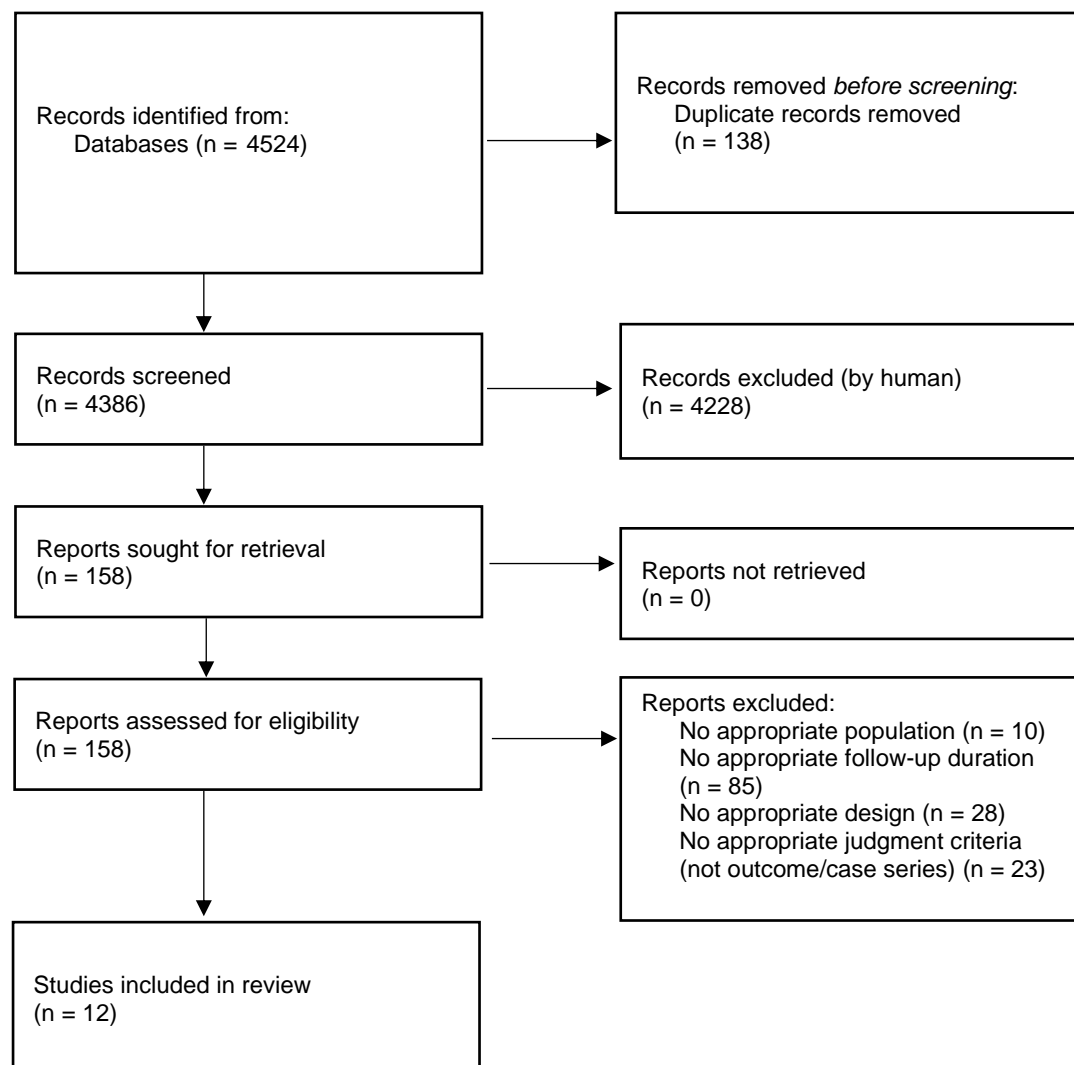
Supplementary Table S1. The inclusion and exclusion criteria for the studies screened by the authors. These criteria were decided by the authors, based on the available data for each clinical question, and they were not included in the initial search by the librarians (as it is described above- Appendix A).

Question	Inclusion criteria	Exclusion criteria
1	Systematic reviews Meta-analyses Randomised controlled trials Observational studies Adult population Follow-up period: 1 to 6 months	Opinion pieces & editorials Letters Review articles Case reports Studies not in English Laboratory/animal studies
2	Systematic reviews Meta-analyses Randomised controlled trials Observational studies Adult population Follow-up period: 1 to 6 months	Opinion pieces & editorials Letters Review articles Case reports Studies not in English Laboratory/animal studies
3	Systematic reviews Meta-analyses Randomised controlled trials Observational studies Adult population Follow-up period: 1 to 6 months	Opinion pieces & editorials Review articles Case reports Studies not in English Laboratory/animal studies
4	Systematic reviews Meta-analyses Randomised controlled trials Observational studies Adult population Follow-up period: 1 to 6 months	Opinion pieces & editorials Letters Review articles Case reports Studies not in English Laboratory/animal studies
5	Systematic reviews Meta-analyses Randomised controlled trials	Opinion pieces & editorials Letters Review articles

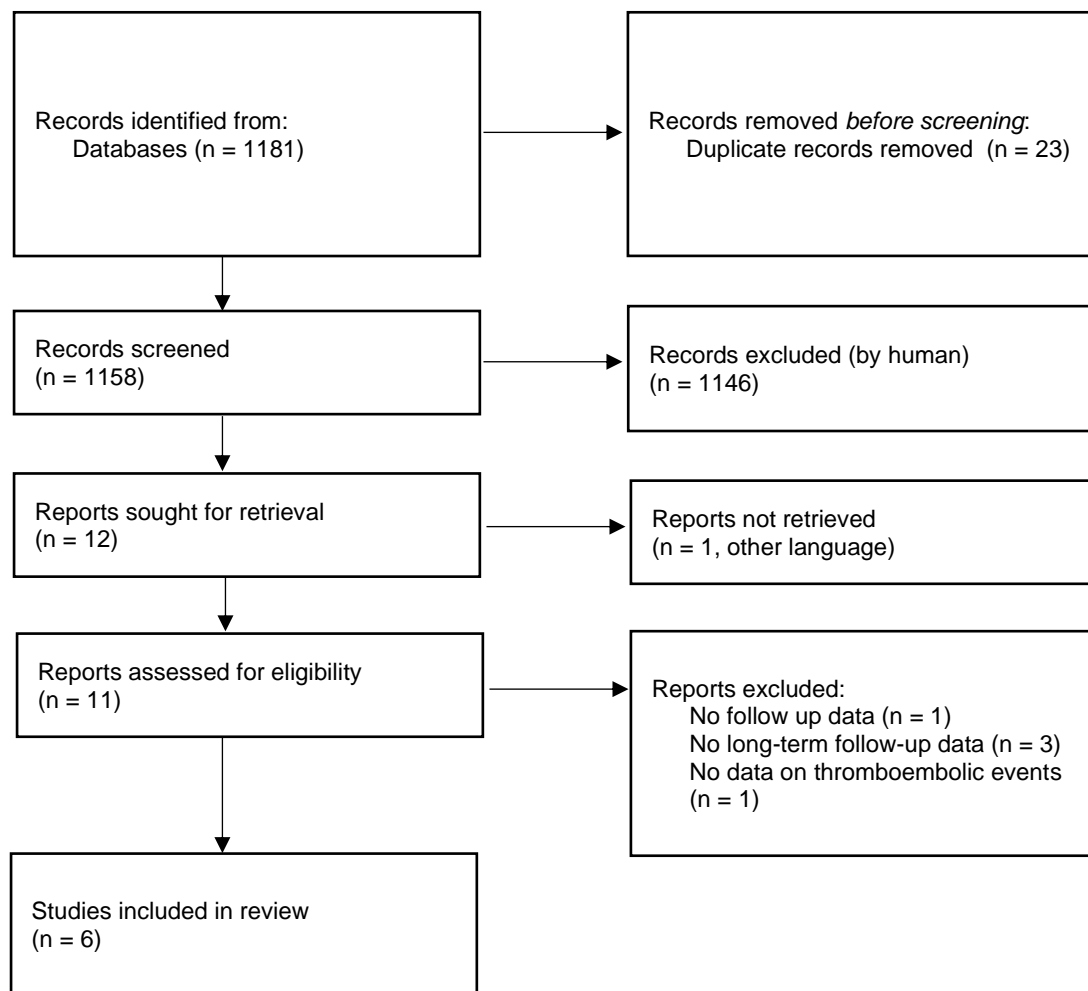
	Observational studies Case reports and case series Adult population Follow-up period: 1 to 6 months	Studies not in English Laboratory/animal studies
6	Systematic reviews Meta-analyses Randomised controlled trials Observational studies Adult population Follow-up period: 1 to 6 months	Opinion pieces & editorials Letters Review articles Case reports Studies not in English Laboratory/animal studies
7	Systematic reviews Meta-analyses Randomised controlled trials Observational studies Adult population Follow-up period: 1 to 6 months	Opinion pieces & editorials Review articles Case reports Studies not in English Laboratory/animal studies
8	Systematic reviews Meta-analyses Randomised controlled trials Observational studies Adult population Follow-up period: 1 to 6 months	Opinion pieces & editorials Letters Review articles Case reports Studies not in English Laboratory/animal studies

Appendix C – PRISMA diagram for each question

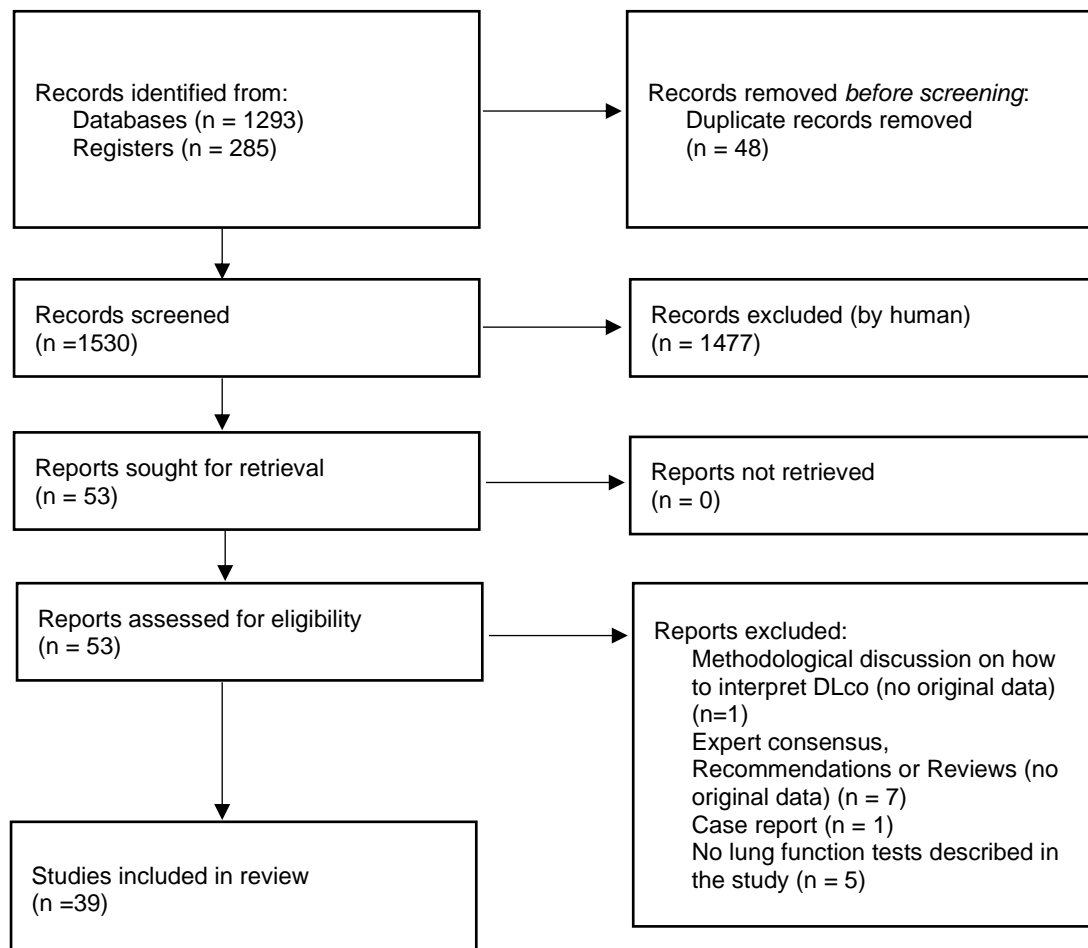
PRISMA diagram for question 1



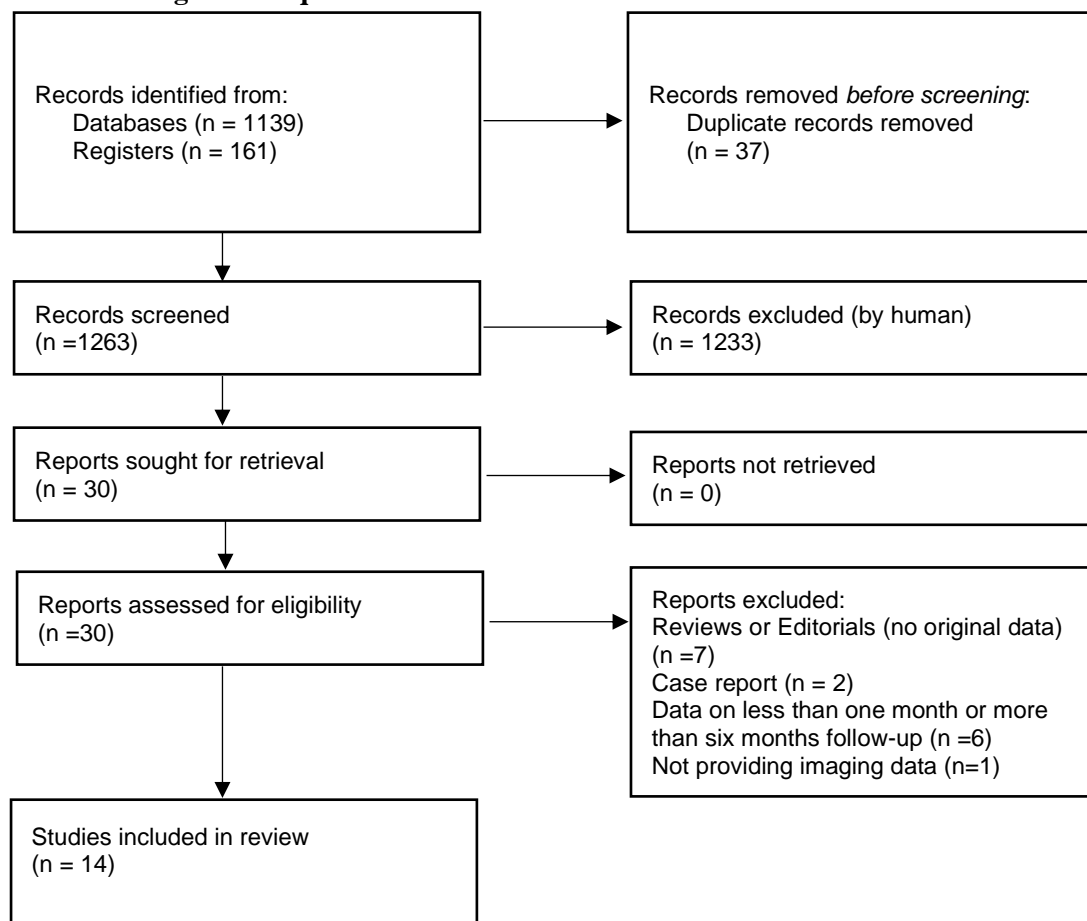
PRISMA diagram for question 2



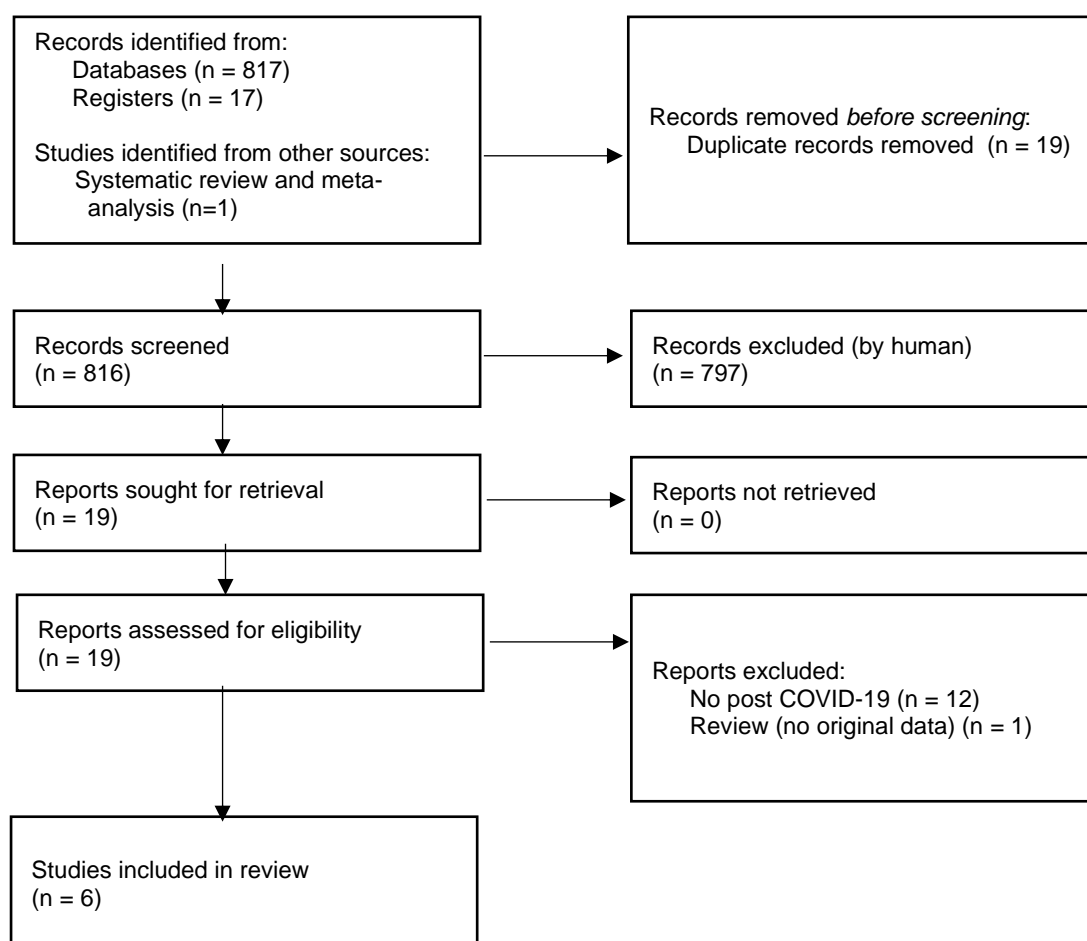
PRISMA diagram for question 3



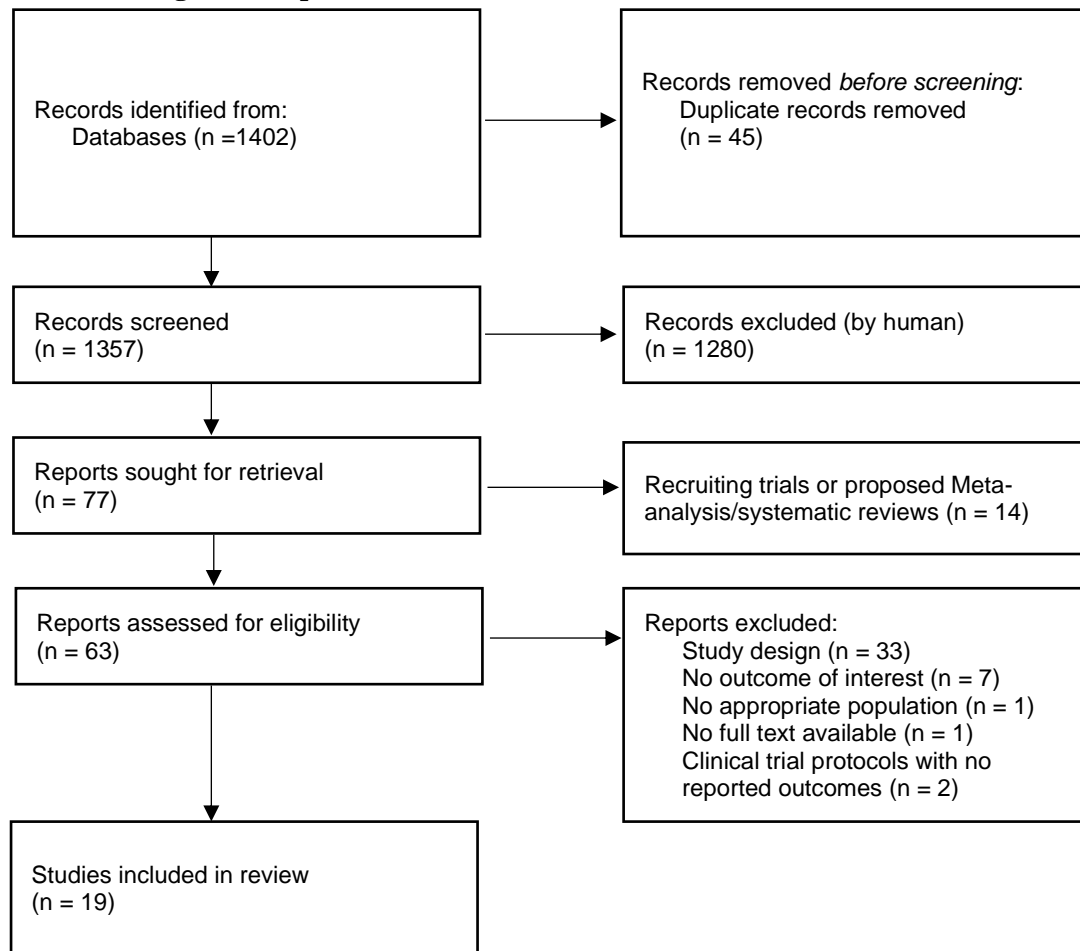
PRISMA diagram for question 4



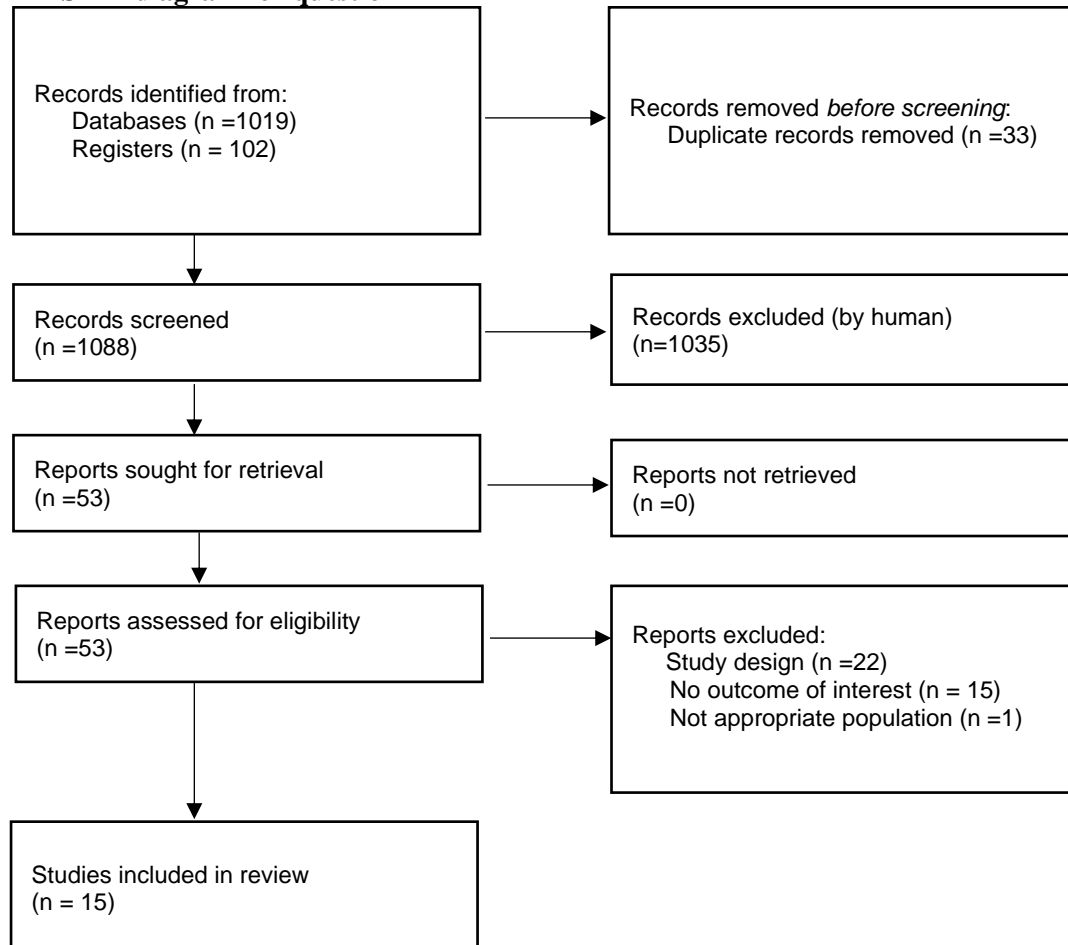
PRISMA diagram for question 5



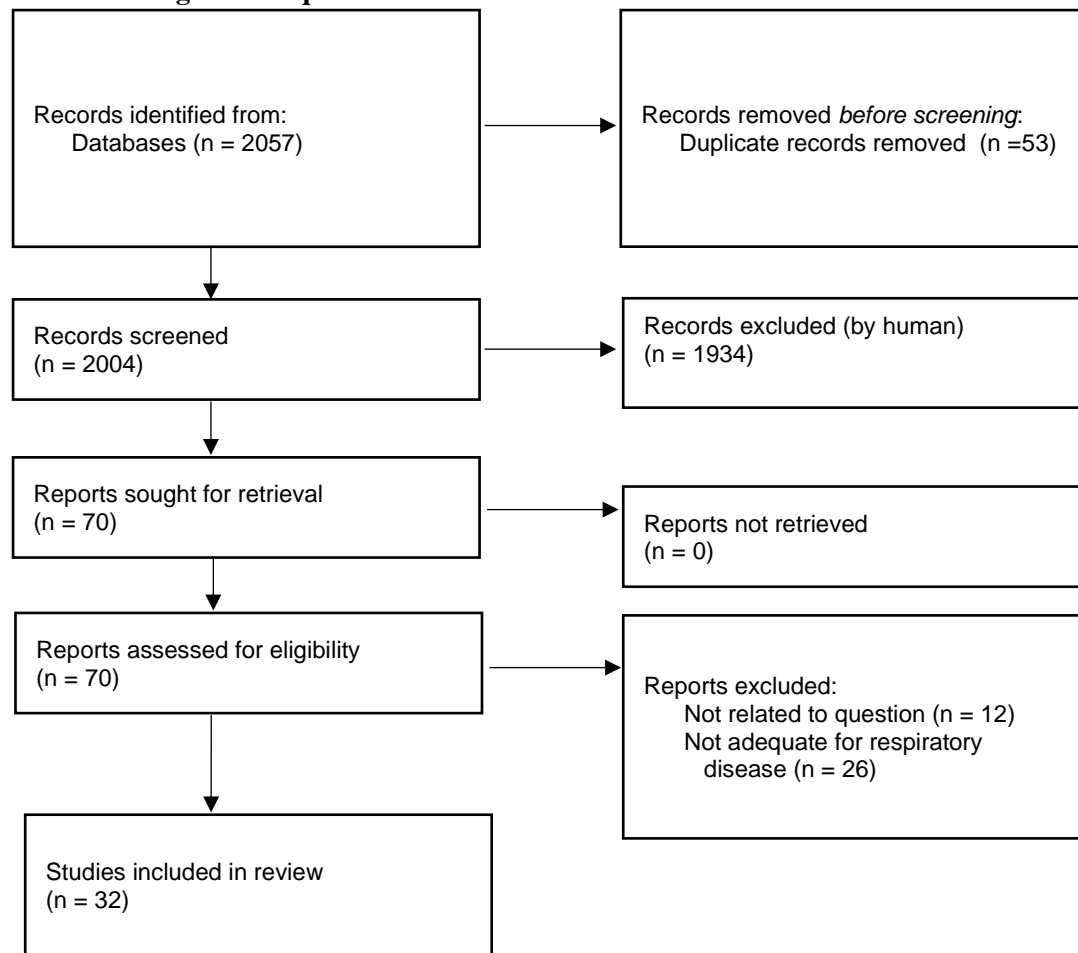
PRISMA diagram for question 6



PRISMA diagram for question 7



PRISMA diagram for question 8



Supplementary Table S2.

Table of instruments measuring symptoms burden and quality of life in COVID-19 survivors (clinical question 6).

Instrument	Intended use	Properties	Reference
Barthel's Index	Performance measure of ADLs:measures functional independence in the domains of personal care and mobility.	Ordinal scale 10 items Self report	Mahoney FI, Barthel D. Functional evaluation: the Barthel Index. Maryland State Med Journal 1965; 14:56-61.
BORG	Rating of perceived exertion (RPE) to monitor and guide exercise intensity.	Ratio Scale Original 6-20 scale Revised 0-10 scale Self report	Borg G. Borg's Perceived Exertion and Pan Scales. Champaign, IL: Human Kinetics, 1998.
CFS	Chalder Fatigue Scale: measure the severity of tiredness in illnesses known to have an element of fatigue.	Multi-dimensional 11 or 14 items Self Report	T Chalder, G Berelowitz, T Pawlikowska, et al.Development of a fatigue scale. J Psychosom Res, 17 (1993), pp. 147-153.
DASS	Depression, Anxiety and Stress Scale: a measure of emotional states.	Dimensional Scale 42 items 21 items Short Form Self Report	Lovibond, S.H. & Lovibond, P.F. (1995). Manual for the Depression Anxiety Stress Scales. (2 nd . Ed.) Sydney: Psychology Foundation.
EPQ	Eysenck Personality Questionnaire: a measure of two central dimensions of personality, extraversion and neuroticism.	Ordinal scale EPQ-R 100-items EPQ-RS 48-items Self Report	Eysenck and Eysenck, 1975 Manual of the E.P.Q.Hodder & Stoughton.
EQ-5D	Euroqol quality of life questionnaire: five questions on mobility, self-care, pain, usual activities, and psychological status and VAS assessing QOL.	Ordinal Scale 5 domains Each with 3 items Short Form Self Report	EuroQoL Group (1990) EuroQoL: a new facility for the measurement of health-related quality of life. Health Policy 16:199-208.
FIC	Functional Impairment Checklist: measure of intensity developed in Hong Kong for Post-SARS clinics to measure health status and to serve as a clinical checklist for referral rehabilitation.	8 items Ordinal Scale Self Report	Siu Pui Lam et al. The validity and reliability of the functional impairment checklist (FIC) in the evaluation of functional consequences of severe acute respiratory distress syndrome (SARS) Quality of Life Research (2006) 15: 217-231 2006.
FIM	Functional Independence Measure: a measure of dysfunction in activities that commonly occur in subjects with any progressive, reversible or stable neurologic, musculoskeletal, or other disorder ie patients with functional mobility impairments.	18-item 7-level Ordinal Scale Clinician Reported	Linacre JM, Heinemann JW, Wright BD, Granger CV, Hamilton BB. The structure and stability of the functional independence measure. Arch Phys Med Rehabil. 1994. 75: 127-132.
FSS	Fatigue Severity Scale: measures the severity of fatigue and its effect on a person's activities and lifestyle in patients with a variety of disorders.	9-item Ordinal scale Self report	Krupp LB, LaRocca NG, Muir-Nash J, Steinberg AD. The Fatigue Severity Scale. Application to patients with multiple sclerosis and systemic lupus erythematosus. Arch Neurol. 1989;46(10):1121-3.
GAD-7	Generalised Anxiety Disorder: screening tool for anxiety / severity.	7-items Summative scale Clinician report	Spitzer RL, Kroenke K, Williams JB, et al; A brief measure for assessing generalized anxiety disorder: the GAD-7. Arch Intern Med. 2006 May 22;166(10):1092-7. GAD-7

Instrument	Intended use	Properties	Reference
GHQ-12	General Health Questionnaire 12: measures anxiety and depression, social dysfunction, and loss of confidence.	unidimensional 12-items Self Report	Hardy GE, Shapiro DA, Haynes CE, & Rick JE. Validation of the General Health Questionnaire-12: Using a sample of employees from England's health care services. <i>Psychological Assessment</i> , 1999 11(2), 159–165.
HADS	Hospital Anxiety and Depression Scale: measure of anxiety and depression – overall measure of psychological distress.	7-items anxiety 7-items depression Ordinal scale Self report	Zigmond AS, Snaith RP. The hospital anxiety and depression scale. <i>Acta Psychiat Scand</i> 1983;67: 361–70.
MMRC	Modified MRC breathlessness scale: for patients with respiratory diseases, to assess degree of baseline functional disability due to dyspnea.	5-item	Mahler DA, Wells CK: Evaluation of clinical methods for rating dyspnea. <i>Chest</i> . 1988, 93: 580-586. 10.1378/chest.93.3.580.
PCFS	Post-COVID-19 Functional Status (PCFS) Scale: an additional outcome measure to evaluate the ultimate consequences of COVID-19 on functional status.	Ordinal Scale 5 items Clinician Reported	Klok FA, Boon GJAM, Barco S, Endres M, Geelhoed JJM, et al. PCFS: a tool to measure functional status over time after COVID-19. <i>Eur Respir J</i> . 2020;56(1):2001 494.
PHQ-9	Patient Health Questionnaire 9: screening tool for depression / severity.	9-items Summative scale clinician report	Kroenke K, Spitzer R L, Williams J B (2001). The PHQ-9: validity of a brief depression severity measure. <i>Journal of General Internal Medicine</i> , 16(9): 606-613.
PSQI	Pittsburgh Slep Quality Index	19 items Self Report	Buysse, D.J.; Reynolds, C.F.; Monk, T.H.; Berman, S.; Kupfer, D. The Pittsburgh sleep quality index: A new instrument for psychiatric practice and research. <i>Psychiat. Res</i> . 1989, 28, 193–213.
PSS-10	Perceived Stress Scale: measures the perception of stress; the degree to which situations are appraised as stressful by the individual.	10-items Ordinal scale Self Report	Cohen, S., Kamarck, T., and Mermelstein, R. (1983). A global measure of perceived stress. <i>Journal of Health and Social Behaviour</i> , 24, 386-396.
PSSS	Perceived Social Support Scale: measure perceptions of support from 3 sources: Family, Friends, and a Significant Other.	12-items Ordinal scale Multidimensional Self Report	Zimet GD, Powell SS, Farley GK, Werkman S, Berkoff KA. Psychometric characteristics of the Multidimensional Scale of Perceived Social Support. <i>Journal of Personality Assessment</i> , 1990 55: 610-17.
PC-PTSD	Primary Care PTSD: Screening tool to assess whether the respondent has had any exposure to traumatic events.	5-item Binary Self Report	Prins, A., Bovin, M. J., Kimerling, R., Kaloupek, D. G., Marx, B. P., Pless Kaiser, A., & Schnurr, P. P. (2015). The Primary Care PTSD Screen for DSM-5 (PC-PTSD-5).
SAS	Self-rating Anxiety Scale: an instrument to discriminate anxiety from mood disorders.	20 items Ordinal scale Self Report	Zung WWK. A rating instrument for anxiety disorders. <i>Psychosomatics</i> , 1971, 12, 371–379.
SCID (quick)	Structured Clinical Interview for DSM Disorders: semi-structured interview guide for making diagnoses according DSM / DSM-5.	Modular Manual required Clinician delivered	First MB & Williams JBW Quick Structured Clinical Interview for DSM-5® Disorders (QuickSCID-5) American Psychiatric Association 2021.

Instrument	Intended use	Properties	Reference
SCL-90	Symptom Checklist 90: a measure of symptomatic distress.	90 items Ordinal Scale multidimensional Self Report	Derogatis LR. SCL-90-R: Administration, Scoring of Procedures Manual-II for the Revised Version and Other Instruments of the Psychopathology Rating Scale Series: Clinical Psychometric Research Incorporated. 1992.
SCSQ	Simplified Coping Style Questionnaire; a measure of problem-focused coping and emotion-focused coping.	20-items Ordinal scale Self report	Jie, Y. Reliability and validity of the Chinese version of coping style scale. Chin. J. Clin. Psychol. 1998, 2, 114–115.
SDS	Self-rating Depression Scale: an instrument to assess the severity of a depressive disorder in patients with other parameters and where treatment of the depressive disorder changes.	20 items Ordinal scale Self Report	Zung WWK. A self-rating depression Scale Arch Gen Psychiatry. 1965;12(1):63-70.
SES	Self-Esteem Scale: measures global self-worth by measuring both positive and negative feelings about the self.	10-item Ordinal Scale Unidimensional Self Report	Rosenberg, M. (1965). Society and the adolescent self-image. Princeton, NJ: Princeton University Press.
SF-36	Short-Form 36: Quality of life measure at the individual level in clinical practice and research, and at the population level for health policy evaluations, and general population surveys.	36-items 8 domains Multi-dimensional Self-Report	Ware Jr. JE, & Sherbourne CD. The MOS 36-Item Short-Form Health Survey (SF-36). Conceptual Framework and Item Selection. Medical Care, 1992 30, 473-483.
SGRQ	St George's Respiratory Questionnaire: Disease-specific HRQOL instrument designed to measure impact on overall health, daily life, and perceived well-being in patients with obstructive airways disease.	50-items Part I Symptoms: several scales; Part II: Activity and Impacts;dichotomous (true/false); Final question (4-point Likert scale)	Jones PW, Quirk FH, Baveystock CM. The St. George's Respiratory Questionnaire. Resp Med 1991;85 (suppl B):2531.

ADLs: Activities of Daily Living, VAS: Visual Analog Scale, QOL: quality-of-life, PTSD: Post-Traumatic Stress Disorder, DSM: Diagnostic and Statistical Manual of Mental Disorders