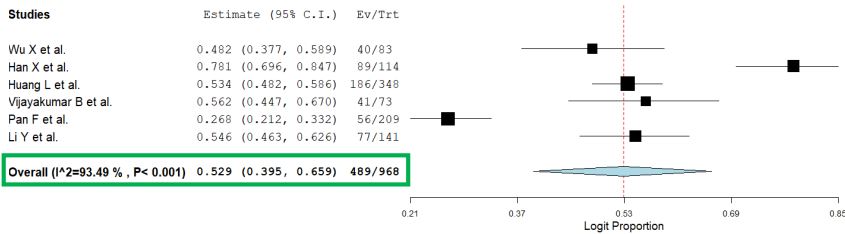


One-year follow-up CT findings in COVID-19 patients

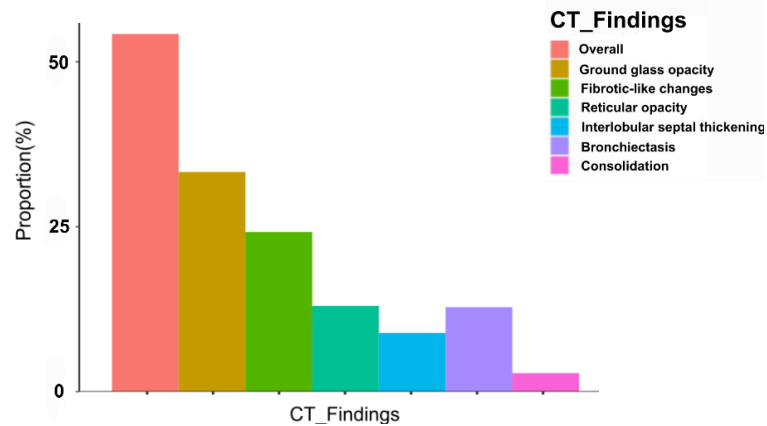
A systematic review and meta-analysis

Mid-term Follow-up

The proportion of patients with any residual CT abnormalities



Residual abnormal CT findings



Summary points

Fifteen observational studies with 3,134 hospitalized COVID-19 patients were included.

*

Residual CT abnormalities were common even 1-year after COVID-19.

*

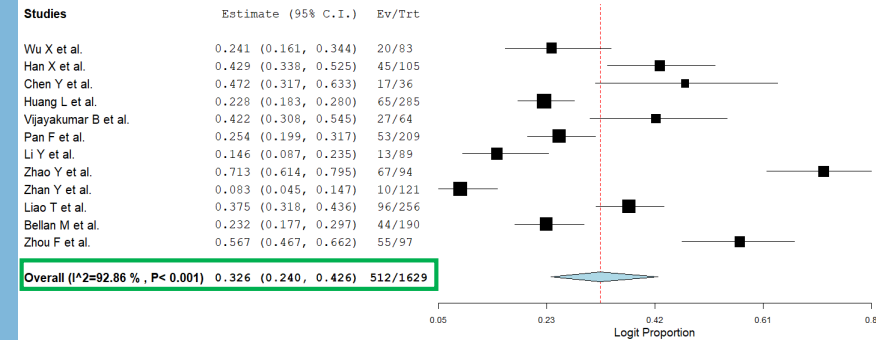
Gradual recovery from mid-term (4-7 months) to 1-year follow-up was observed on CT.

*

Fibrotic changes may take longer to resolve, especially in patients with severe or critical COVID-19.

1-year Follow-up

The proportion of patients with any residual CT abnormalities



Residual abnormal CT findings

