

Figure S1. Diffuse positivity for CD117 in gastrointestinal stromal tumors. CD117 (magnification, x40).

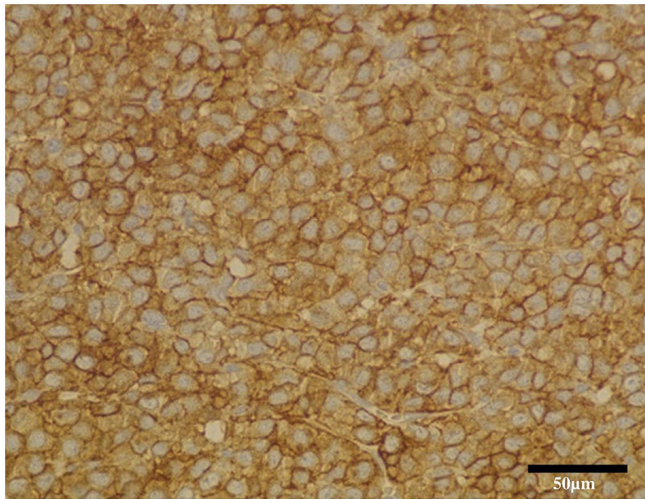


Figure S2. Overall survival of patients with *KIT/PDGFR α /BRAF* WT vs. mutated tumors assessed by reverse transcription-quantitative PCR and Sanger sequencing. KIT, KIT proto-oncogene, receptor tyrosine kinase; PDGFRA, platelet derived growth factor receptor alpha; WT, wild-type.

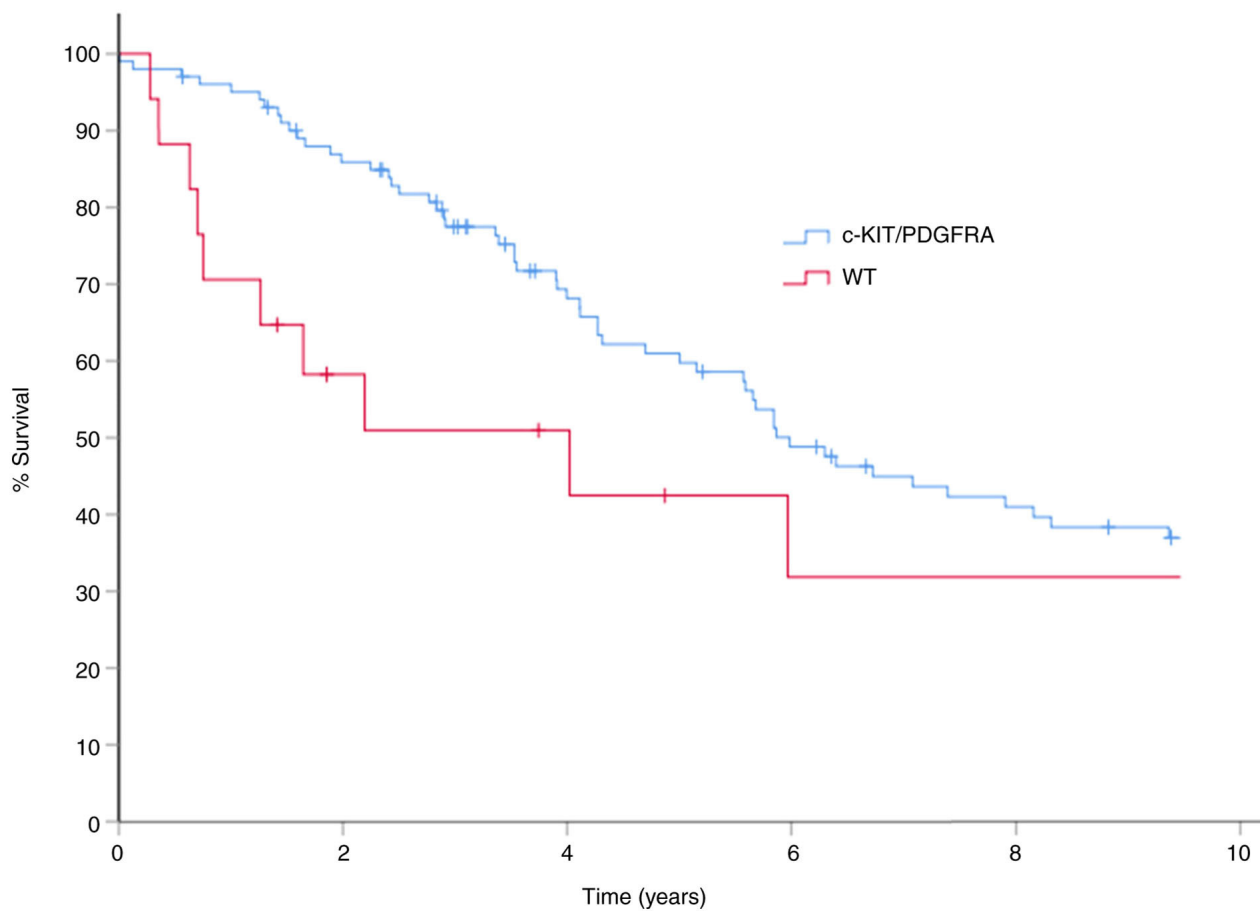


Figure S3. IHC staining for SDHB protein in 3 GIST samples later verified as *SDH* mutated. Upper line: GIST, H&E; patient no. 7 and 9, magnification, x20; patient no. 8, magnification, x40. Lower line: Loss of SDHB IHC staining in the cytoplasm of tumor cells and retained staining in associated inflammatory, smooth muscle and endothelial cells (magnification, x40). Patients are listed according to Table III. IHC, immunohistochemical; SDH, succinate dehydrogenase complex; GIST, gastrointestinal stromal tumors.

