

Supplementary data

Effect of Light Quality and Media Components on Shoot Growth, Rutin and Quercetin production from common buckwheat

Ahmed M. M. Gabr¹, Nesrin M Fayek², Hossam M. Mahmoud³, Mohamed K. El-Bahr¹, Hanan S. Ebrahim¹, Oksana Sytar^{4,5}, Ali M. El-Halawany^{2*}

¹*Department of Plant Biotechnology, Biotechnology Research Institute, National Research Centre (NRC), Cairo12622, Egypt*

²*Pharmacognosy Department, College of Pharmacy, Cairo University, Kasr El Aini st., 11562, Cairo, Egypt*

³*Nawah Scientific Co., El Mokattam, Egypt.*

⁴*Plant Biology Department, Educational and Scientific Center “Institute of Biology and Medicine”, Taras Shevchenko National University of Kyiv, Kyiv, Ukraine.*

⁵*Department of Plant Physiology, Slovak Agricultural University in Nitra, Tr. A. Hlinku 2, 94976 Nitra, Slovak Republic*

***Corresponding author:**

Ali Mahmoud El-Halawany, PhD

Department of Pharmacognosy, Faculty of Pharmacy, Cairo University, Cairo, Egypt.

Email: ali.elhalawany@pharma.cu.edu.eg

Tel/Fax: +201005554846

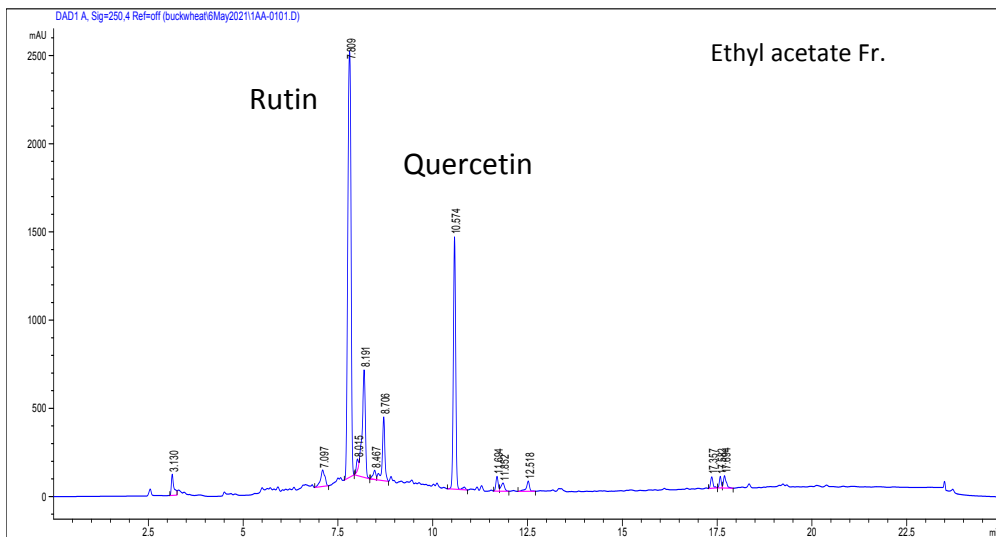
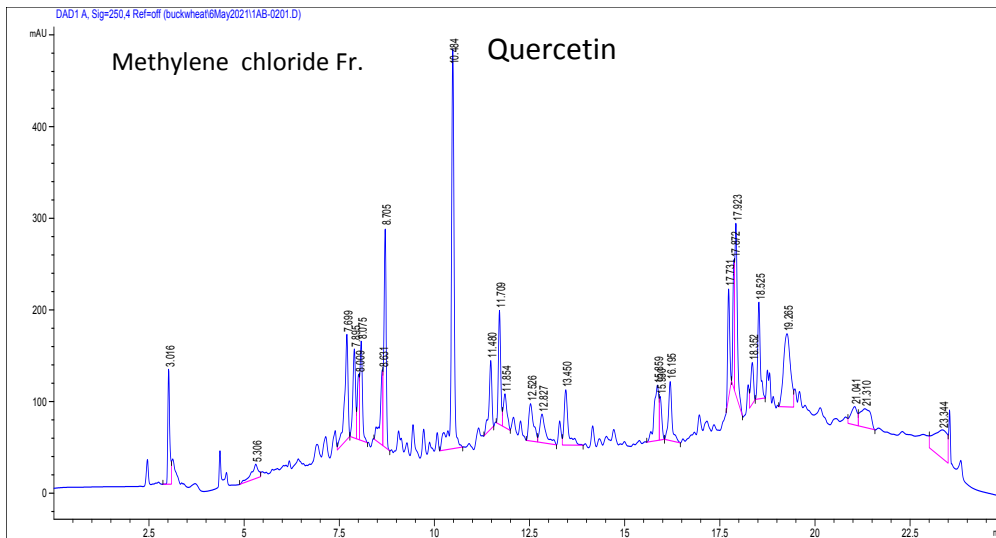
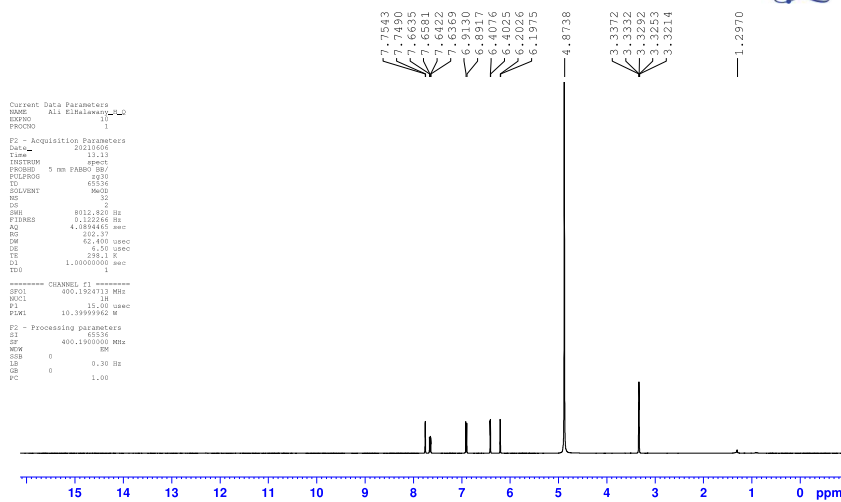


Figure S1: Examples of HPLC chromatograms for rutin and quercetin of in methylene chloride and ethyl acetate fractions

Ali ElHalawany_H_Q

Microanalytical Unit - FOPCU - NMR laboratory
www.pharma.cu.edu.eg dir-mau.fopcu@pharma.cu.edu.eg



Ali ElHalawany_H_Q

Microanalytical Unit - FOPCU - NMR laboratory
www.pharma.cu.edu.eg dir-mau.fopcu@pharma.cu.edu.eg

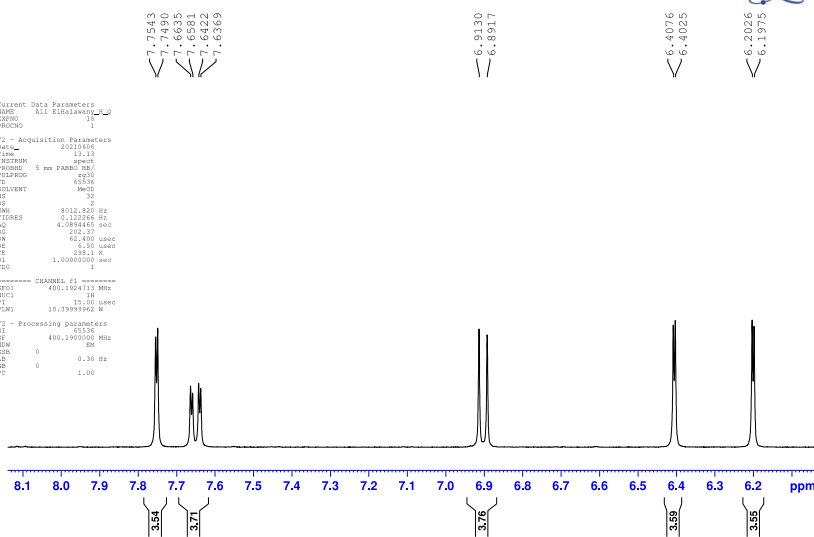


Figure S2. ¹H-NMR spectra of quercetin isolated from the shootlets

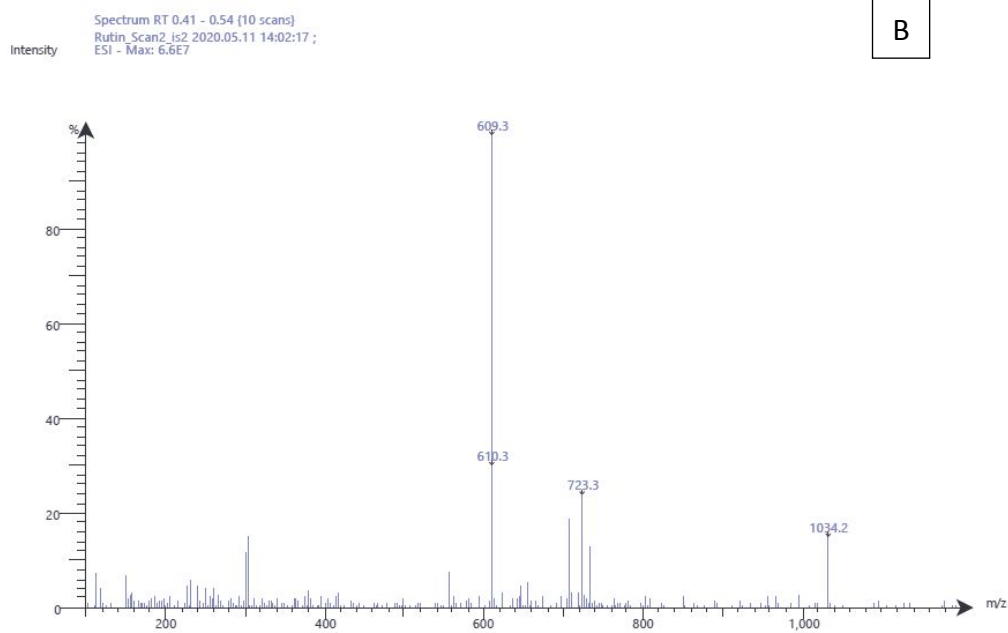
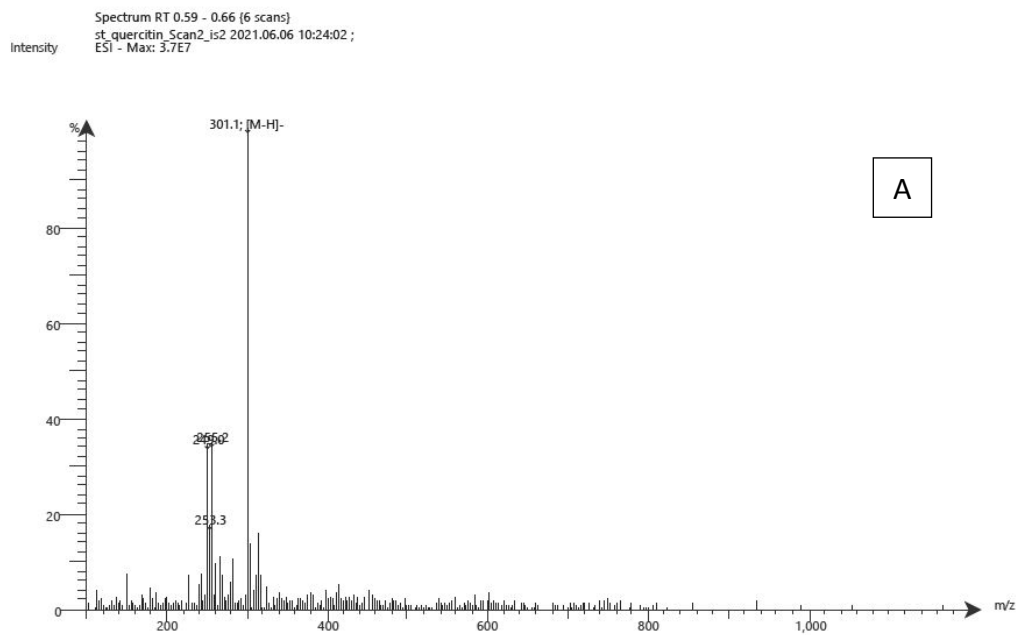


Figure S4. ESI Mass spectra of quercetin (A) and Rutin (B).