

Engineering of a C3-specific nanobody

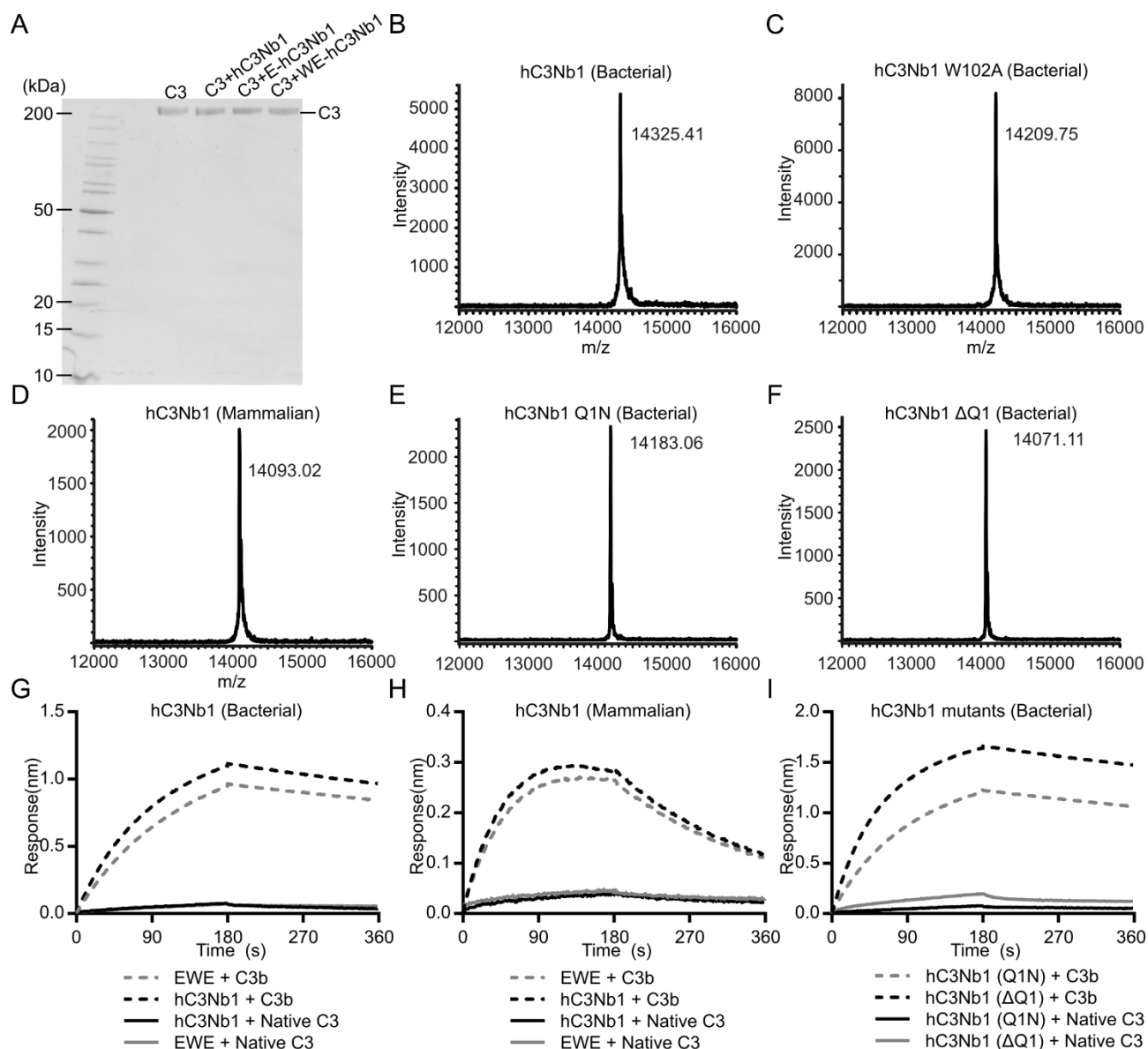


Figure S2 Analyses of the parental hC3Nb1. (A) Non-reducing SDS-PAGE of peak fractions from Figure 1 panels H-J. Mass spectrometric analyses of (B) bacterially expressed hC3Nb1, (C) bacterially expressed hC3Nb1 (W102A), (D) mammalian expressed hC3Nb1, (E) bacterially expressed hC3Nb1 (Q1N), and (F) bacterially expressed hC3Nb1 (ΔQ1). BLI based analyses binding to 50 nM native C3 or 50 nM C3b by (G) bacterially expressed EWE and hC3Nb1, (H) mammalian expressed hC3Nb1 and EWE or (I) bacterially expressed hC3Nb1 mutants Q1N and ΔQ1.