

### A Colonic mucosal damage score

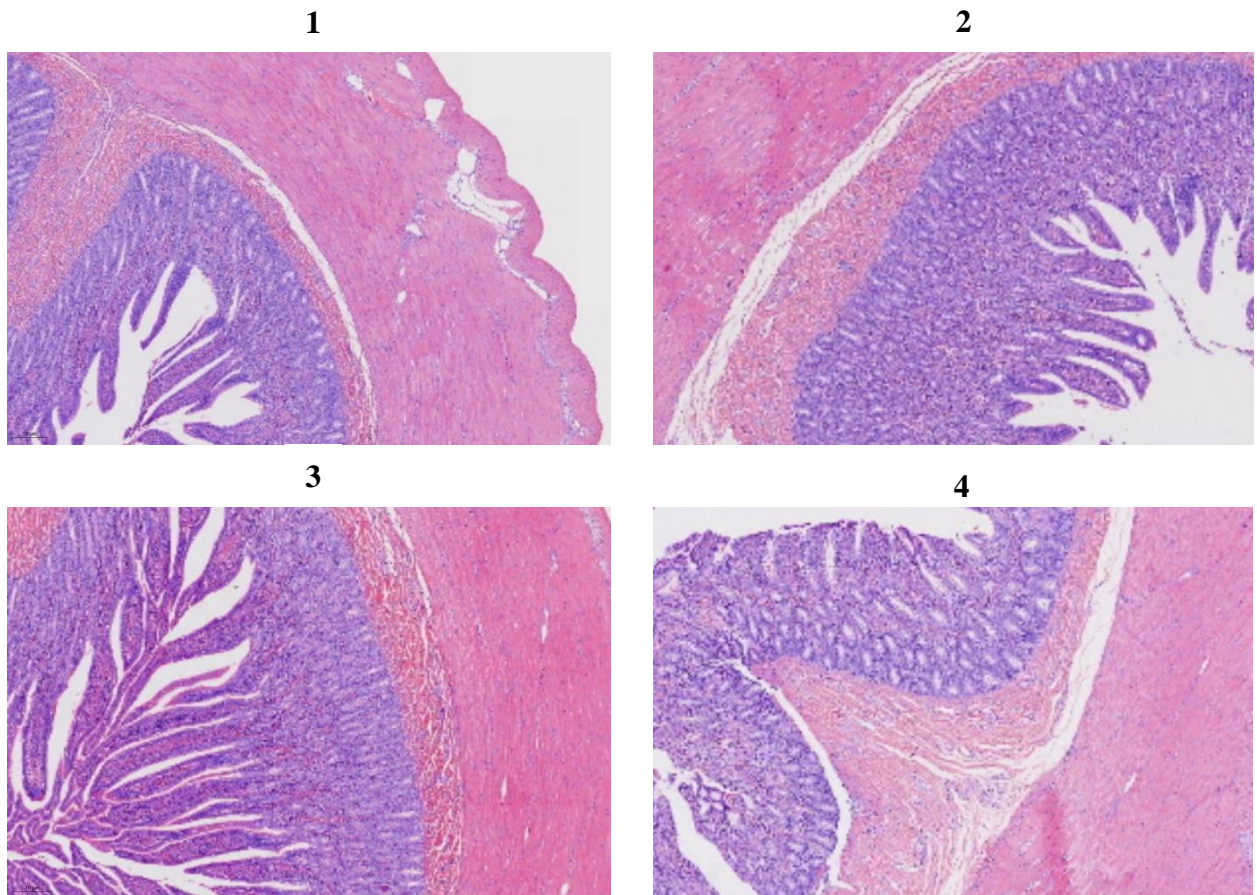
1: Slight damage of surface epithelium;

2: Loss and injury of villus tip epithelial cells;

3: Mucosal vascular obstruction, hemorrhage and focal necrosis, villus loss of less than half;

4: Damage extends to more than half of the villi. Each group's colonic mucosal damage score.

### B Typical illustrations



**Supplementary Figure 1.** (A) Histological assessment of the intestinal injury. The evaluation standard of the degree of tissue injury was a 0-4 scale. (B) Legends for each score.

