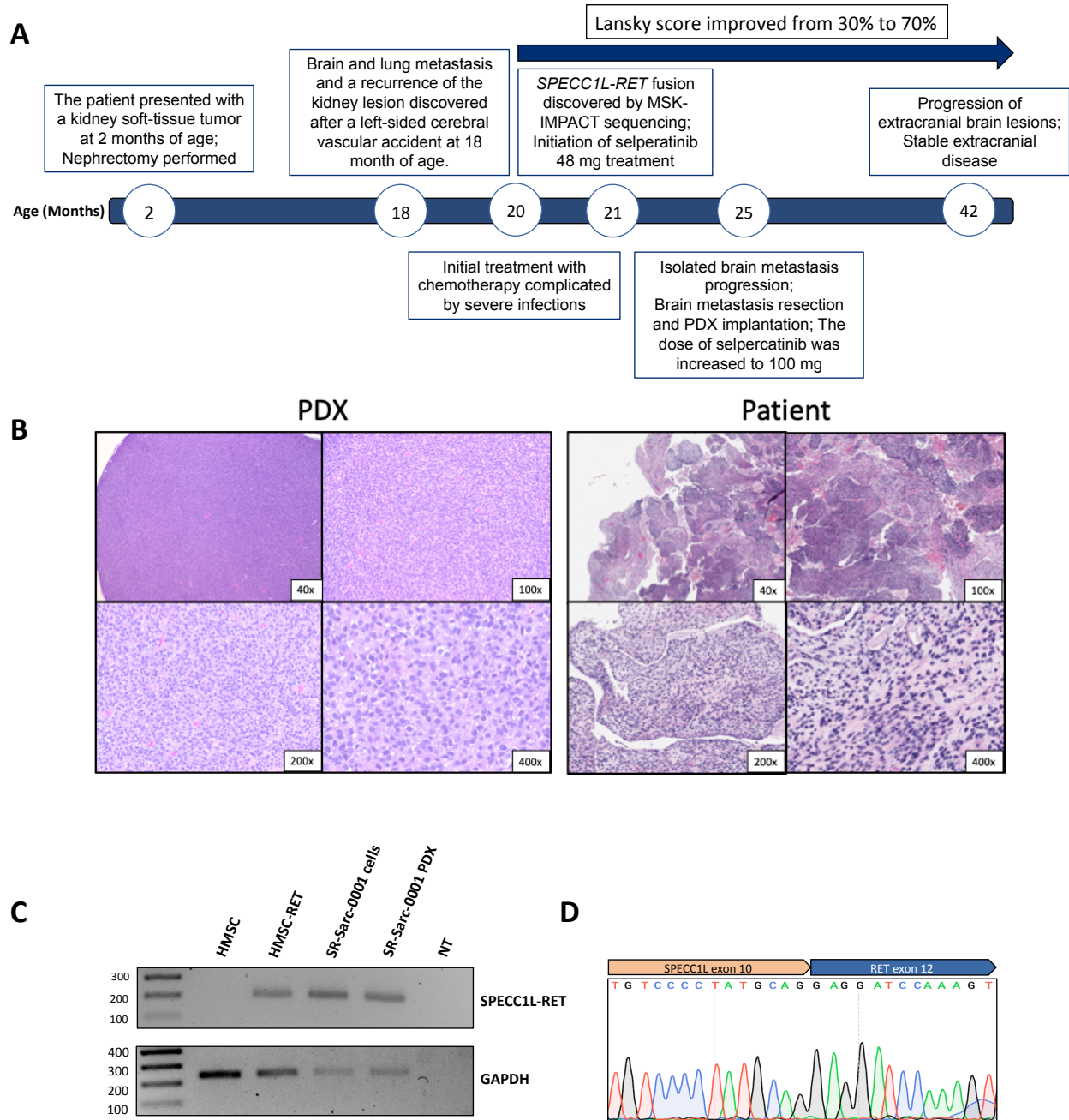


# Supplementary Figure S1



**Supplementary Figure S1. Generation and characterization of a sarcoma model with *RET* rearrangement.** **A.** Schematic illustration of the clinical course of the SR-Sarc-0001 patient. **B.** Tissue slides were prepared from the SR-Sarc-0001 (**left**) and the original patient tumor (**right**) and stained with hematoxylin and eosin. **C.** Total RNA was isolated and cDNA prepared from HMSC, HMSC-RET, and SR-Sarc-0001 cells and PDX. PCR for *SPECC1L-RET* (**top**) and *GAPDH* (**bottom**) was performed to confirm expression of the fusion transcript. **D.** Sanger sequencing of the PCR amplicon showing the fusion junction.