

Figure S1 Inclusion criteria.

Table S1 Detailed rates of adjuvant therapy according to pathological stage

	pStage I (n=3,687)	pStage II (n=1,194)	pStage III (n=1,131)	P value
Chemotherapy	85 (2.3%)	399 (33.4%)	449 (39.7%)	<0.001
Radiotherapy	9 (0.2%)	52 (4.4%)	259 (22.9%)	<0.001
Chemoradiotherapy	2 (0.1%)	43 (3.6%)	264 (23.3%)	<0.001
None	3,591 (97.4%)	700 (58.6%)	284 (25.1%)	<0.001

pStage, pathological stage.

Table S2 Recurrence pattern for overall patients with non-small cell lung cancer

			Recurrence pattern		
			Loco-regional	Distant	Mixed
Total patients (n=1658)			431 (26.0%)	1084 (65.4%)	186 (11.2%)
Recurrence site	Loco-regional	Mediastinal lymph node	64 (14.8%)		99 (53.2%)
		Bronchus stump	69 (16.0%)		31 (16.7%)
		Lung	70 (16.2%)		40 (21.5%)
		Chest wall	139 (32.3%)		11 (5.9%)
		Others	89 (20.6%)		6 (3.2%)
	Distant	Brain		192 (17.7%)	9 (4.8%)
		Bone		196 (18.1%)	40 (21.5%)
		Liver		65 (6.0%)	17 (9.1%)
		Mediastinal lymph node		76 (7.0%)	41 (22.0%)
		Adrenal gland		47 (4.3%)	5 (2.7%)
		Kidney		8 (0.7%)	2 (1.1%)
		Lung		522 (48.2%)	70 (37.6%)
		Other lymph node		119 (11.0%)	46 (24.7%)
		Others		112 (10.3%)	39 (21.0%)

Table S3 Details of the recurrence detection mode

	Total	Recurrence pattern		
		Loco-regional	Distant	Mixed
The number of cases	1658	431	1084	186
The presence of recurrence-related symptom	472 (28.5%)	15 (3.5%)	385 (35.5%)	72 (38.7%)
Unplanned visit for recurrence ^a	196 (11.8%)	9 (2.1%)	132 (12.2%)	55 (29.6)
Pathologically confirmed cancer recurrence	441 (26.6%)	130 (30.2%)	272 (25.1%)	39 (21.0%)
Initial modality for recurrence detection				
- Symptom	85 (5.1%)	3 (0.7%)	34 (31.4%)	48 (25.8%)
- Physical examination	9 (0.5%)	0	2 (0.2%)	7 (3.7%)
- Chest CT	1168 (70.4%)	416 (96.5%)	720 (66.4%)	32 (17.2%)
- PET scan	187 (11.3%)	10 (2.3%)	45 (4.2%)	132 (71.0%)
- Brain MRI	245 (14.8%)	0	177 (16.3%)	68 (36.6%)
- Bone scan	37 (2.2%)	0	9 (0.8%)	28 (15.1%)

^a, A recurrence diagnosed not by a scheduled outpatient clinic, such as emergency room or unplanned outpatient clinic visit after follow-up loss. CT, computed tomography; PET, positron emission tomography; MRI, magnetic resonance imaging.

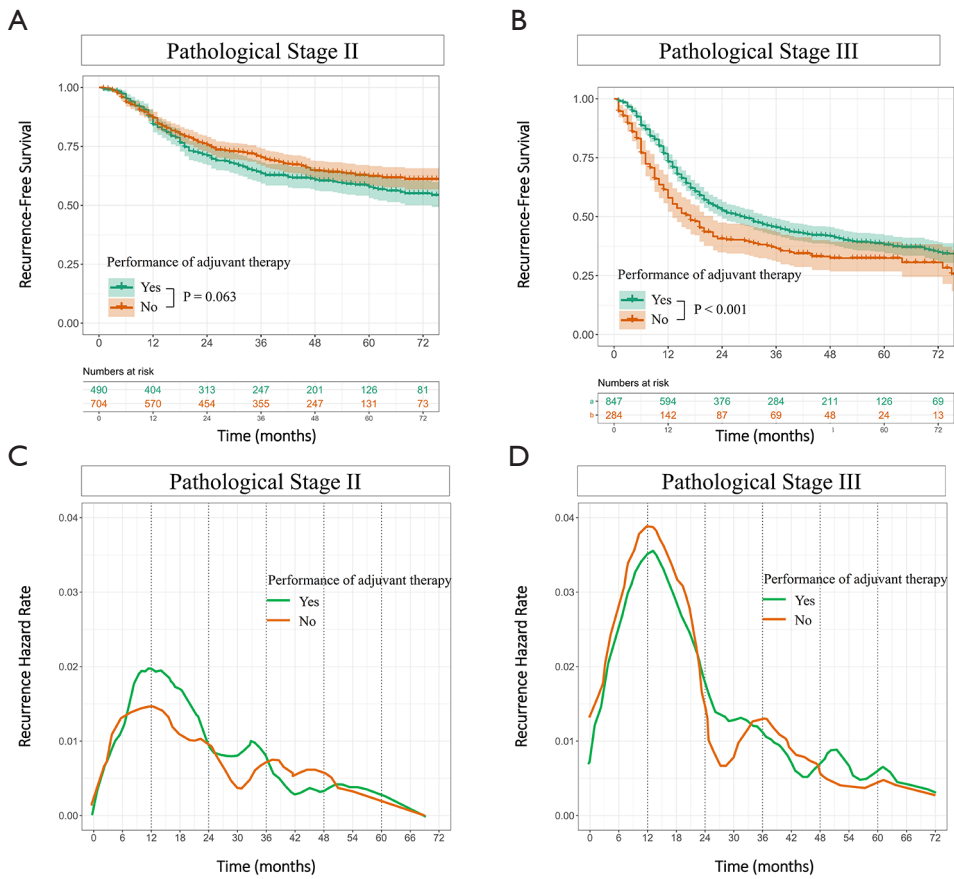


Figure S2 Recurrence-free survival following the performance of adjuvant therapy in patients with pathological stage II (A) and III (B). The hazard rate for recurrence following the performance of adjuvant therapy in patients with pathological stage II (C) and III (D).