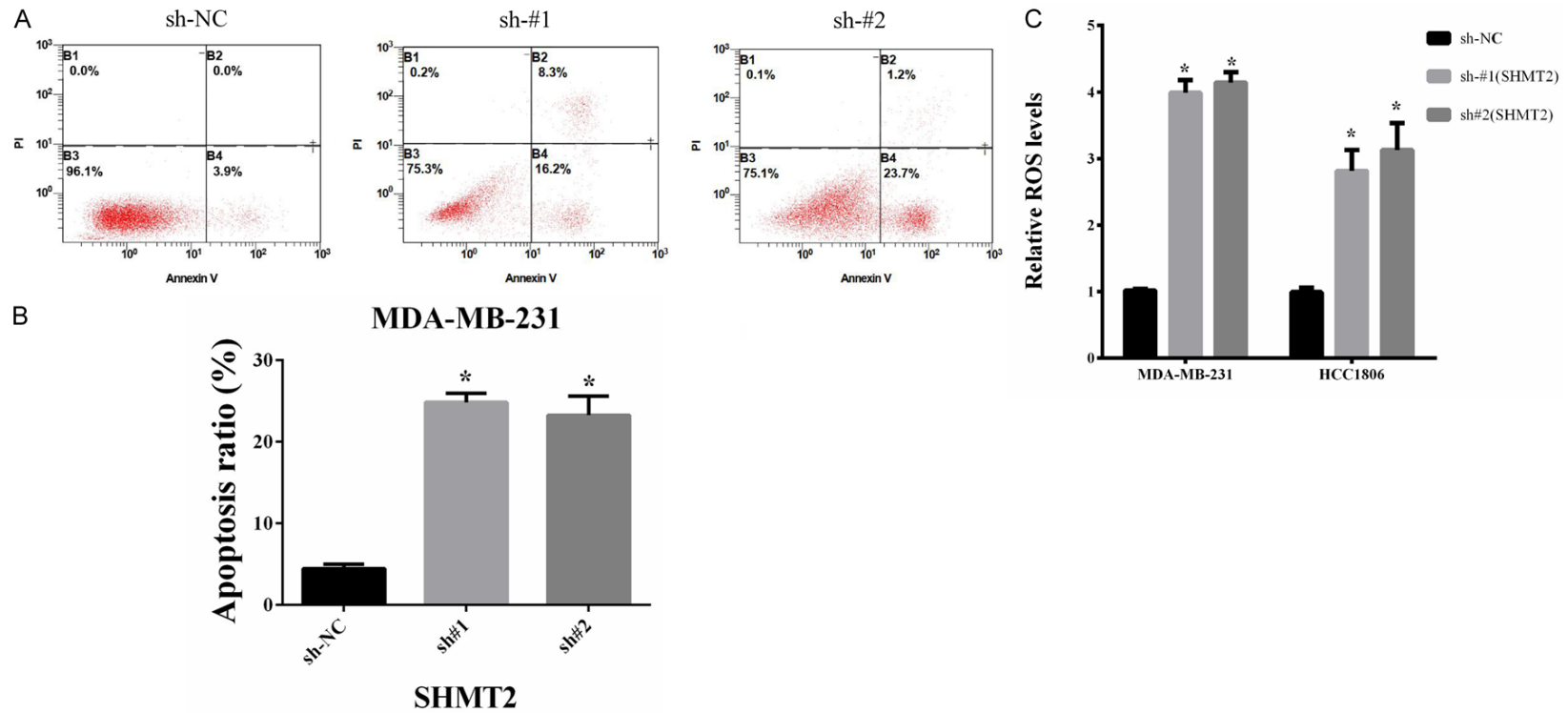


SHMT2 promotes tumor growth in breast cancer



Supplementary Figure 1. Knocking down SHMT2 in breast cancer cells can up-regulate ROS level and apoptosis rate. A. Apoptosis rate was detected by annexin v-FITC and PI double stained cells combined with flow cytometry fluorescence separation in MDA-MB-231 and HCC1806 cell lines with SHMT2 knockdown. B. The apoptosis rate of each group was quantitatively analyzed. C. ROS level in MDA-MB-231 and HCC1806 cell lines with SHMT2 knockdown. * $P < 0.05$; Student's t-test. The data are presented as the mean \pm SD.