

## **Supplementary Material**

### **Subsequent primary cancer risk among five-year survivors of adolescent and young adult cancers**

Hyuna Sung<sup>1</sup>; Rebecca L. Siegel<sup>1</sup>; Noorie Hyun<sup>2</sup>; Kimberly D. Miller<sup>1</sup>; K. Robin Yabroff<sup>1</sup>;  
Ahmedin Jemal<sup>1</sup>

<sup>1</sup>Surveillance and Health Equity Science, American Cancer Society, Atlanta, GA; <sup>2</sup>Division of Biostatistics, Kaiser Permanente Washington Health Research Institute, Seattle, WA, US

### **Supplementary Methods**

Cumulative incidence and corresponding 95% CI of overall subsequent primary cancers (SPCs, excluding same-site SPC and non-melanoma skin cancer) were estimated by first primary adolescent and young adult (AYA) cancer, based on the time from 5<sup>th</sup> anniversary of the index cancer diagnosis to the first SPC occurrence after cohort entry, while treating death from any cause was treated as a competing risk. For cumulative mortality from SPC, death from non-first primary cancer (non-index cancer) was treated as an event and death from all other causes was treated as a competing risk. Survivors were censored at the date of lost follow-up, death date from unknown and miscellaneous cancer death (due to higher chance of dying from non-SPC), and the end date of the study, whichever came first.

To explore the stage distribution of SPCs at diagnosis, stage-specific risks of developing SPCs were examined. Stage at SPC diagnosis (localized, regional, distant, and unknown) was based on SEER Historic Stage A. SPCs coded as “Blank(s)” for stage were excluded in this analyses as they are from certain site/year combinations that were not covered by SEER Historic Stage A [1]. This analysis was performed among all survivors combined for the top five SPCs that

accounted for the highest proportions of all excess cases (lung, breast, colorectum, thyroid, and head and neck), with the exclusion of survivors whose first primary cancer are the same-type of SPC in question.

For the analyses stratified by treatment era and treatment group, we restricted our attention to top 10 most common AYA cancers (female breast, thyroid, testis, cervix uteri, non-Hodgkin lymphoma, Hodgkin lymphoma, brain and other nervous system, and colorectum) and the top 5 SPCs of the highest proportions of all excess cases. We excluded survivors of melanoma of the skin in the stratified analysis by treatment group because the majority of survivors (n=23,719, 99%) were reported to have received neither chemotherapy nor radiotherapy. Survivors were divided into 4 groups based on reported initial treatment: radiotherapy alone (no or unknown chemotherapy), chemotherapy alone (no or unknown radiotherapy), both (radiotherapy yes and yes chemotherapy), neither (no or unknown radiotherapy or chemotherapy).

Associations of treatment era or treatment group with the risk of developing SPCs were examined by comparing SIRs stratified by treatment era (1975-1986, 1987-1999, 2000-2013) or treatment group in multi-variate Poisson regression models. Models were adjusted for sex (when appropriate), age at first primary malignancy (15-29,  $\geq 30$  years), and time since first cancer diagnosis (60-239,  $\geq 240$  months) through stratification, with the inclusion of the log of the expected number of cases as an offset to indirectly adjust for attained age and calendar year [2]. Two-sided P-values for heterogeneity in SIRs by treatment group were based on a likelihood ratio statistic comparing model fit with and without the variable of interest.

All SIRs, AElS, SMRs, and AEMs were calculated using "MP-SIR" session of SEER\*Stat 8.3.9, cumulative incidence was calculated using Stata version 13, and all multi-variate models were fitted using SAS version 9.4. A two-sided P-value  $< 0.05$  was considered statistically significant.

### Supplementary references

1. The SEER Variable and Recode Definitions on the SEER Historic Stage A  
[https://seer.cancer.gov/seerstat/variables/seer/yr1973\\_2009/lrd\\_stage/index.html](https://seer.cancer.gov/seerstat/variables/seer/yr1973_2009/lrd_stage/index.html).
2. Yasui Y, Liu Y, Neglia JP, *et al*. A methodological issue in the analysis of second-primary cancer incidence in long-term survivors of childhood cancers. *Am J Epidemiol* 2003;158(11):1108-13.
3. Curtis RE, Freedman DM, Ron E, Ries LAG, Hacker DG, Edwards BK, Tucker MA, Fraumeni JF Jr. (eds). *New Malignancies Among Cancer Survivors: SEER Cancer Registries, 1973-2000*. National Cancer Institute, NIH Publ. No. 05-5302. Bethesda, MD, 2006.
4. Rostgaard K. Methods for stratification of person-time and events - a prerequisite for Poisson regression and SIR estimation. *Epidemiol Perspect Innov* 2008;5:7.

Supplementary Table 1. Frequencies and study inclusion status of first primary invasive cancers diagnosed at aged 15 to 39 years in 1975-2013 in 9 SEER registries

	Male and female		Female		Male	
	N	%	N	%	N	%
Total, N	174671		108295		66376	
Frist primary cancers included in the study						
Breast	27236	15.6	27176	25.1	60 <sup>a</sup>	0.1
Melanoma of the Skin	24000	13.7	14879	13.7	9121	13.7
Thyroid	23408	13.4	19077	17.6	4331	6.5
Testis	16501	9.4	-	-	16501	24.9
Hodgkin Lymphoma	13404	7.7	6550	6.0	6854	10.3
Cervix Uteri	10314	5.9	10314	9.5	-	-
Non-Hodgkin Lymphoma	9474	5.4	3848	3.6	5626	8.5
Non-Hodgkin Lymphoma	9204	5.3	3764	3.5	5440	8.2
Chronic Lymphocytic Leukemia	270	0.2	84	0.1	186	0.3
Brain and Cranial Nerves Other Nervous System	6499	3.7	2941	2.7	3558	5.4
Colon and Rectum	5843	3.3	2906	2.7	2937	4.4
Ovary	4066	2.3	4066	3.8	-	-
Head and Neck	4683	2.7	2092	1.9	2591	3.9
Oral Cavity and Pharynx	3974	2.3	1818	1.7	2156	3.2
Nose, Nasal Cavity and Middle Ear	309	0.2	147	0.1	162	0.2
Larynx	400	0.2	127	0.1	273	0.4
Corpus Uteri, NOS	3608	2.1	3608	3.3	-	-
Soft Tissue including Heart	3207	1.8	1480	1.4	1727	2.6
Kidney and Renal Pelvis	2916	1.7	1275	1.2	1641	2.5
Urinary Bladder, Ureter, Other Urinary Organs	2709	1.6	713	0.7	1996	3.0
Bones and Joints	1978	1.1	811	0.7	1167	1.8
Kaposi Sarcoma	1586	0.9	25 <sup>a</sup>	0.0	1561	2.4
Lung and Bronchus	1456	0.8	788	0.7	668	1.0
Acute Myeloid Leukemia and Acute Myeloid Leukemia	1477	0.8	770	0.7	707	1.1
Acute Myeloid Leukemia	1411	0.8	737	0.7	674	1.0
Acute Monocytic Leukemia	66	0.0	33	0.0	33	0.0
Chronic Myeloid Leukemia	1259	0.7	496	0.5	763	1.1
Acute Lymphocytic Leukemia	1113	0.6	416	0.4	697	1.1
Stomach	566	0.3	296	0.3	270	0.4
Vagina, Vulva, and Other Female Genital Organs	1123	0.6	1123	1.0	-	-
Eye and Orbit	562	0.3	293	0.3	269	0.4
Myeloma	478	0.3	192	0.2	286	0.4
Small Intestine	390	0.2	188	0.2	202	0.3
Pancreas	333	0.2	203	0.2	130	0.2
Anus, Anal Canal and Anorectum	300	0.2	121	0.1	179	0.3
Frist primary cancers excluded from the study						
Other Endocrine Organs	433	0.2	149	0.1	284	0.4

Other Respiratory Organs	309	0.2	38	0.0	271	0.4
Other Digestive Organs	304	0.2	150	0.1	154	0.2
Other Lymphocytic Leukemia	288	0.2	67	0.1	221	0.3
Liver	223	0.1	100	0.1	123	0.2
Thymus	214	0.1	93	0.1	121	0.2
Prostate	207	0.1	-	-	207	0.3
Aleukemic, Subleukemic and NOS	105	0.1	53	0.0	52	0.1
Esophagus	94	0.1	16	0.0	78	0.1
Other Acute Leukemia	84	0.0	38	0.0	46	0.1
Mesothelioma	69	0.0	44	0.0	25	0.0
Other Male Genital Organs	67	0.0	-	-	67	0.1
Penis	63	0.0	-	-	63	0.1
Other Myeloid/Monocytic Leukemia	62	0.0	31	0.0	31	0.0
Other Biliary	56	0.0	25	0.0	31	0.0
Gallbladder	41	0.0	27	0.0	14	0.0
Intrahepatic Bile Duct	20	0.0	8	0.0	12	0.0
Miscellaneous	1543	0.9	809	0.7	734	1.1

NOTE Refer to the Site Recode ICD-O-3/WHO 2008 Definition by SEER program ([https://seer.cancer.gov/siterecode/icdo3\\_dwho/home/index.html](https://seer.cancer.gov/siterecode/icdo3_dwho/home/index.html)) for ICD-O-3 Site and Histology (Type) code used to classify primary sites.

<sup>a</sup>Excluded from the study

Supplementary Table 2. Definition of same-type cancer when it is different for first primary cancer and subsequent primary cancer

Frist primary cancer	Definitions of the same-type subsequent primary cancer
Colon and Rectum	Colon and Rectum, Anus, Anal Canal and Anorectum
Lung and Bronchus	Incidence: Lung and Bronchus Mortality: Lung and Bronchus, Trachea, Mediastinum and Other Respiratory Organs
Cervix Uteri	Cervix Uteri; Corpus and Uterus, NOS; Ovary
Corpus and Uterus, Not Otherwise Specified	
Ovary	
Non-Hodgkin Lymphoma	Non-Hodgkin Lymphoma, Myeloma
Myeloma	
Acute Myeloid Leukemia and Acute Monocytic Leukemia	Acute Myeloid Leukemia; Acute Monocytic Leukemia; Chronic Myeloid Leukemia; Other Acute Leukemia; Aleukemic, Subleukemic and Not Otherwise Specified Leukemia
Chronic Myeloid Leukemia	
Acute Lymphocytic Leukemia	Acute Lymphocytic Leukemia; Other Lymphocytic Leukemia; Aleukemic, Subleukemic and Not Otherwise Specified

NOTE For some first primary cancer types, we extended the definition of same-type cancer to adjacent anatomical subsites to reduce bias due to heightened medical surveillance, as well as artifactually decreased risks due to surgical resection of nearby organs. For example, the uterus and ovaries are all often surgically removed during treatment for gynecologic cancers and the lower part of rectum close to the anus is removed during treatment for colorectal cancer. All myeloid/monocytic leukemias were considered as same-type cancers as first primary acute myeloid/monocytic leukemia and chronic myeloid leukemia, and all lymphocytic leukemias were considered as same-type cancers as first primary acute lymphocytic leukemia to reduce the bias from diagnostic misclassification [3].

Supplementary Table 3. Standardized incidence ratio (SIR), absolute excess incidence (AEI), standardized mortality ratio (SMR), and absolute excess mortality (AEM) and corresponding 95% confidence intervals for higher-than-expected type-specific subsequent primary cancer risk

First primary cancer	Subsequent primary cancer	Obs	Exp.	Standardized incidence ratio (95% CI)	Absolute excess incidence per 10,000 (95% CI)	AEI (%) <sup>a</sup>	Obs.	Exp.	Standardized mortality ratio (95% CI)	AEM (95% CI)	AE M (%) <sup>b</sup>	Person Years at Risk
Acute Lymphocytic Leukemia	Acute Non-Lymphocytic Leukemia	<5	<5	10 (2.1 to 29.2)	2 (0.2 to 6.2)	8.5	8	0.2	<b>50.2 (21.7 to 98.8)</b>	<b>5.7 (2.4 to 11.3)</b>	29.6	13750
Acute Lymphocytic Leukemia	Bones and Joints	<5	<5	9 (0.2 to 49.9)	0.6 (-0.1 to 4)	2.8	<5	<5	24.9 (0.6 to 138.6)	0.7 (0 to 4)	3.6	13750
Acute Lymphocytic Leukemia	Brain and ONS	<5	<5	4.2 (0.9 to 12.4)	1.7 (-0.1 to 5.9)	7.2	<5	<5	10.8 (2.9 to 27.6)	2.6 (0.5 to 7.2)	13.7	13750
Acute Lymphocytic Leukemia	Breast (F)	9	5.2	1.7 (0.8 to 3.3)	7.6 (-2.2 to 23.8)	12.0	<5	<5	5 (1 to 14.5)	4.8 (0 to 16.4)	9.1	4979
Acute Lymphocytic Leukemia	Chronic Myeloid Leukemia	<5	<5	17.5 (3.6 to 51.2)	2.1 (0.3 to 6.3)	8.9	0	-	-	-	-	13750
Acute Lymphocytic Leukemia	Colon and Rectum	<5	<5	1.6 (0.4 to 4.1)	1.1 (-1 to 5.6)	4.8	0	-	-	-	-	13750
Acute Lymphocytic Leukemia	Esophagus	<5	<5	4.1 (0.1 to 23)	0.6 (-0.2 to 3.9)	2.4	0	-	-	-	-	13750
Acute Lymphocytic Leukemia	Head and Neck	8	1.3	<b>6.3 (2.7 to 12.4)</b>	<b>4.9 (1.6 to 10.5)</b>	21.2	<5	<5	4.7 (0.1 to 26.5)	0.6 (-0.1 to 3.9)	3.0	13750
Acute Lymphocytic Leukemia	Kidney and Renal Pelvis	<5	<5	1.7 (0.2 to 6.2)	0.6 (-0.7 to 4.4)	2.6	0	-	-	-	-	13750
Acute Lymphocytic Leukemia	Liver and Intrahepatic Bile Duct	<5	<5	2 (0.1 to 11.3)	0.4 (-0.3 to 3.7)	1.6	<5	<5	3.1 (0.1 to 17.3)	0.5 (-0.2 to 3.8)	2.6	13750
Acute Lymphocytic Leukemia	Non-Hodgkin Lymphoma	0	-	-	-	-	<5	<5	3.8 (0.1 to 21)	0.5 (-0.2 to 3.9)	2.8	13750
Acute Lymphocytic Leukemia	Pancreas	<5	<5	1.9 (0 to 10.5)	0.3 (-0.4 to 3.7)	1.5	<5	<5	2.6 (0.1 to 14.3)	0.4 (-0.3 to 3.8)	2.3	13750
Acute Lymphocytic Leukemia	Prostate	<5	<5	1 (0.2 to 3.1)	0.2 (-2.6 to 6.7)	0.4	<5	<5	21.7 (2.6 to 78.3)	2.2 (0.2 to 8.1)	7.2	8772
Acute Lymphocytic Leukemia	Small Intestine	<5	<5	6.3 (0.2 to 35.3)	0.6 (-0.1 to 3.9)	2.7	0	-	-	-	-	13750
Acute Lymphocytic Leukemia	Thyroid	6	1.9	<b>3.2 (1.2 to 7)</b>	<b>3 (0.2 to 8.1)</b>	13.0	0	-	-	-	-	13750
Acute Lymphocytic Leukemia	Urinary Bladder	<5	<5	1.2 (0 to 6.6)	0.1 (-0.6 to 3.4)	0.5	0	-	-	-	-	13750
Acute Myeloid Leukemia	Acute Lymphocytic Leukemia	<5	<5	8.5 (0.2 to 47.5)	0.5 (-0.1 to 3.2)	1.9	5	0.1	<b>83.8 (27.2 to 195.6)</b>	<b>2.9 (0.9 to 6.8)</b>	19.9	17141
Acute Myeloid Leukemia	Bones and Joints	0	-	-	-	-	<5	<5	21.4 (0.5 to 119.4)	0.6 (0 to 3.2)	3.8	17141
Acute Myeloid Leukemia	Brain and ONS	<5	<5	1 (0 to 5.7)	0 (-0.6 to 2.7)	0.1	<5	<5	1.7 (0 to 9.7)	0.2 (-0.3 to 2.9)	1.7	17141
Acute Myeloid Leukemia	Breast (F)	27	12.5	<b>2.2 (1.4 to 3.1)</b>	<b>16.1 (5.9 to 29.7)</b>	30.7	<5	<5	1.3 (0.2 to 4.7)	0.5 (-1.4 to 6.3)	1.9	9026
Acute Myeloid Leukemia	Colon and Rectum	<5	<5	0.9 (0.2 to 2.3)	-0.3 (-2 to 3.4)	-	<5	<5	3.4 (0.9 to 8.6)	1.6 (-0.1 to 5.3)	11.3	17141
Acute Myeloid Leukemia	Esophagus	<5	<5	4.9 (0.6 to 17.9)	0.9 (-0.1 to 4)	3.4	0	-	-	-	-	17141
Acute Myeloid Leukemia	Eye and Orbit	<5	<5	8.3 (0.2 to 46.1)	0.5 (-0.1 to 3.2)	1.9	0	-	-	-	-	17141
Acute Myeloid Leukemia	Head and Neck	12	2.1	<b>5.7 (2.9 to 9.9)</b>	<b>5.8 (2.4 to 11)</b>	20.9	<5	<5	2.7 (0.1 to 15.1)	0.4 (-0.2 to 3)	2.6	17141
Acute Myeloid Leukemia	Hodgkin Lymphoma	<5	<5	1.9 (0 to 10.4)	0.3 (-0.3 to 2.9)	1.0	0	-	-	-	-	17141
Acute Myeloid Leukemia	Kidney and Renal Pelvis	<5	<5	2 (0.6 to 5.2)	1.2 (-0.5 to 4.8)	4.3	0	-	-	-	-	17141
Acute Myeloid Leukemia	Liver and Intrahepatic Bile Duct	6	0.9	<b>6.8 (2.5 to 14.9)</b>	<b>3 (0.8 to 7.1)</b>	10.8	<5	<5	5.2 (1.1 to 15.1)	1.4 (0 to 4.8)	9.8	17141
Acute Myeloid Leukemia	Lung and Bronchus	7	4.1	1.7 (0.7 to 3.5)	1.7 (-0.8 to 6)	6.1	5	3.0	1.6 (0.5 to 3.8)	1.1 (-0.8 to 5)	7.9	17141
Acute Myeloid Leukemia	Non-Hodgkin Lymphoma	<5	<5	1.4 (0.4 to 3.5)	0.6 (-1 to 4.3)	2.4	<5	<5	2.2 (0.1 to 12.5)	0.3 (-0.2 to 3)	2.2	17141
Acute Myeloid Leukemia	Pancreas	<5	<5	1 (0 to 5.5)	0 (-0.6 to 2.7)	-	<5	<5	2.7 (0.3 to 9.6)	0.7 (-0.3 to 3.8)	5.0	17141

First primary cancer	Subsequent primary cancer	Obs	Exp.	Standardized incidence ratio (95% CI)	Absolute excess incidence per 10,000 (95% CI)	AEI (%) <sup>a</sup>	Obs.	Exp.	Standardized mortality ratio (95% CI)	AEM (95% CI)	AE M (%) <sup>b</sup>	Person Years at Risk
Acute Myeloid Leukemia	Soft Tissue including Heart	<5	<5	4.3 (0.5 to 15.4)	0.9 (-0.1 to 3.9)	3.2	<5	<5	6.1 (0.2 to 34.2)	0.5 (-0.1 to 3.2)	3.4	17141
Acute Myeloid Leukemia	Stomach	<5	<5	1.5 (0 to 8.4)	0.2 (-0.4 to 2.9)	0.7	<5	<5	3.3 (0.1 to 18.3)	0.4 (-0.2 to 3.1)	2.8	17141
Acute Myeloid Leukemia	Thyroid	6	3.1	1.9 (0.7 to 4.2)	1.7 (-0.5 to 5.8)	6.1	0	-	-	-	-	17141
Acute Myeloid Leukemia	Vagina and Vulva	<5	<5	3 (0.1 to 16.5)	0.7 (-0.3 to 5.8)	1.4	0	-	-	-	-	9026
Anus	Breast (F)	<5	<5	1.1 (0.3 to 2.9)	2.8 (-15.4 to 41.8)	1.6	0	-	-	-	-	1599
Anus	Colon and Rectum	<5	<5	1.3 (0.2 to 4.6)	1.2 (-3.5 to 15)	1.6	11	0.4	<b>24.5 (12.2 to 43.8)</b>	<b>28 (13.4 to 51.1)</b>	40.1	3766
Anus	Corpus Uteri, NOS	<5	<5	4.2 (0.9 to 12.4)	14.3 (-0.6 to 50.4)	8.4	<5	<5	13.9 (0.4 to 77.5)	5.8 (-0.3 to 34.4)	3.5	1599
Anus	Gallbladder and Other Biliary	<5	<5	13 (0.3 to 72.6)	2.5 (-0.1 to 14.6)	3.4	0	-	-	-	-	3766
Anus	Head and Neck	<5	<5	2.5 (0.3 to 9)	3.2 (-1.5 to 17)	4.4	<5	<5	6.4 (0.2 to 35.8)	2.2 (-0.3 to 14.4)	3.2	3766
Anus	Hodgkin Lymphoma	<5	<5	9 (0.2 to 50)	2.4 (-0.2 to 14.5)	3.3	0	-	-	-	-	3766
Anus	Kidney and Renal Pelvis	<5	<5	1.4 (0 to 7.8)	0.8 (-1.8 to 12.9)	1.0	0	-	-	-	-	3766
Anus	Liver and Intrahepatic Bile Duct	<5	<5	2.8 (0.1 to 15.7)	1.7 (-0.9 to 13.9)	2.4	<5	<5	4.3 (0.1 to 23.7)	2 (-0.6 to 14.2)	2.9	3766
Anus	Lung and Bronchus	9	1.7	<b>5.4 (2.5 to 10.2)</b>	<b>19.5 (6.5 to 40.9)</b>	26.9	8	1.3	<b>6.3 (2.7 to 12.5)</b>	<b>17.9 (5.8 to 38.5)</b>	25.6	3766
Anus	Melanoma of the Skin	<5	<5	3.4 (0.9 to 8.7)	7.5 (-0.2 to 24.1)	10.4	0	-	-	-	-	3766
Anus	Ovary	<5	<5	3.4 (0.1 to 18.7)	4.4 (-1.7 to 33)	2.6	<5	<5	14.6 (1.8 to 52.8)	11.7 (0.7 to 44.3)	7.1	1599
Anus	Pancreas	<5	<5	2.6 (0.1 to 14.2)	1.6 (-1 to 13.8)	2.2	<5	<5	6.6 (0.8 to 23.8)	4.5 (-0.2 to 18.4)	6.4	3766
Anus	Penis and Other Genital	<5	<5	102.7 (12.4 to 371)	9.1 (1 to 33.3)	7.3	0	-	-	-	-	2166
Anus	Small Intestine	<5	<5	9.6 (0.2 to 53.4)	2.4 (-0.2 to 14.5)	3.3	0	-	-	-	-	3766
Anus	Stomach	0	-	-	-	-	<5	<5	9.2 (0.2 to 51.5)	2.4 (-0.2 to 14.5)	3.4	3766
Anus	Urinary Bladder	<5	<5	3.5 (0.4 to 12.5)	3.8 (-0.9 to 17.7)	5.2	<5	<5	28.1 (3.4 to 101.6)	5.1 (0.5 to 19)	7.3	3766
Anus	Vagina and Vulva	<5	<5	41 (11.2 to 105)	24.4 (6.2 to 63.4)	14.3	0	-	-	-	-	1599
Bones and Joints	Acute Lymphocytic Leukemia	<5	<5	9.6 (1.2 to 34.8)	0.6 (0 to 2.4)	2.7	<5	<5	18 (2.2 to 65.1)	0.6 (0 to 2.4)	2.9	29386
Bones and Joints	Acute Non-Lymphocytic Leukemia	7	0.8	<b>8.5 (3.4 to 17.5)</b>	<b>2.1 (0.7 to 4.6)</b>	9.2	<5	<5	8.1 (2.2 to 20.9)	1.2 (0.2 to 3.3)	5.4	29386
Bones and Joints	Anus	<5	<5	4 (0.5 to 14.3)	0.5 (-0.1 to 2.3)	2.2	0	-	-	-	-	29386
Bones and Joints	Brain and ONS	<5	<5	0.6 (0 to 3.2)	-0.3 (-0.6 to 1.3)	-	7	1.1	<b>6.6 (2.7 to 13.7)</b>	<b>2 (0.6 to 4.5)</b>	9.2	29386
Bones and Joints	Breast (F)	31	17.4	<b>1.8 (1.2 to 2.5)</b>	<b>10.7 (2.9 to 21)</b>	20.3	11	2.2	<b>4.9 (2.5 to 8.8)</b>	<b>6.9 (2.6 to 13.7)</b>	13.5	12703
Bones and Joints	Chronic Myeloid Leukemia	<5	<5	2.3 (0.1 to 12.8)	0.2 (-0.1 to 1.7)	0.8	0	-	-	-	-	29386
Bones and Joints	Colon and Rectum	9	7.7	1.2 (0.5 to 2.2)	0.4 (-1.2 to 3.2)	1.9	<5	<5	1.8 (0.5 to 4.6)	0.6 (-0.4 to 2.7)	2.8	29386
Bones and Joints	Corpus Uteri, NOS	<5	<5	1.2 (0.3 to 3.1)	0.6 (-1.7 to 5.5)	1.1	<5	<5	3.1 (0.1 to 17.5)	0.5 (-0.2 to 4.1)	1.1	12703



First primary cancer	Subsequent primary cancer	Obs	Exp.	Standardized incidence ratio (95% CI)	Absolute excess incidence per 10,000 (95% CI)	AEI (%) <sup>a</sup>	Obs.	Exp.	Standardized mortality ratio (95% CI)	AEM (95% CI)	AE M (%) <sup>b</sup>	Person Years at Risk
Bones and Joints	Esophagus	<5	<5	2.3 (0.3 to 8.2)	0.4 (-0.2 to 2.2)	1.7	<5	<5	1.3 (0 to 7.4)	0.1 (-0.2 to 1.6)	0.4	29386
Bones and Joints	Eye and Orbit	<5	<5	4.7 (0.1 to 26.3)	0.3 (-0.1 to 1.8)	1.2	<5	<5	64.8 (1.6 to 361.3)	0.3 (0 to 1.9)	1.5	29386
Bones and Joints	Gallbladder and Other Biliary	<5	<5	5.3 (0.6 to 19)	0.6 (0 to 2.3)	2.4	0	-	-	-	-	29386
Bones and Joints	Head and Neck	11	4.0	<b>2.7 (1.4 to 4.9)</b>	<b>2.4 (0.5 to 5.3)</b>	10.4	<5	<5	4 (0.8 to 11.7)	0.8 (0 to 2.7)	3.5	29386
Bones and Joints	Kidney and Renal Pelvis	5	3.5	1.4 (0.5 to 3.3)	0.5 (-0.7 to 2.8)	2.2	<5	<5	3.2 (0.4 to 11.5)	0.5 (-0.1 to 2.2)	2.1	29386
Bones and Joints	Liver and Intrahepatic Bile Duct	<5	<5	1.2 (0.1 to 4.4)	0.1 (-0.5 to 1.9)	0.5	<5	<5	0.9 (0 to 5)	0 (-0.4 to 1.5)	-	29386
Bones and Joints	Lung and Bronchus	14	8.1	1.7 (0.9 to 2.9)	2 (-0.1 to 5.2)	8.9	10	6.1	1.6 (0.8 to 3)	1.3 (-0.5 to 4.2)	5.9	29386
Bones and Joints	Melanoma of the Skin	9	7.0	1.3 (0.6 to 2.4)	0.7 (-1 to 3.4)	3.0	<5	<5	1.7 (0 to 9.7)	0.1 (-0.2 to 1.7)	0.7	29386
Bones and Joints	Myeloma	0	-	-	-	-	<5	<5	2.8 (0.1 to 15.6)	0.2 (-0.1 to 1.8)	1.0	29386
Bones and Joints	Non-Hodgkin Lymphoma	<5	<5	0.7 (0.2 to 1.9)	-0.5 (-1.5 to 1.7)	-	<5	<5	2.2 (0.3 to 7.9)	0.4 (-0.2 to 2.1)	1.7	29386
Bones and Joints	Pancreas	<5	<5	1.6 (0.3 to 4.6)	0.4 (-0.4 to 2.3)	1.6	<5	<5	2.1 (0.4 to 6)	0.5 (-0.3 to 2.5)	2.4	29386
Bones and Joints	Prostate	6	12.3	0.5 (0.2 to 1.1)	-3.8 (-6.1 to 0.4)	-	<5	<5	2.1 (0.1 to 11.5)	0.3 (-0.3 to 3)	0.8	16683
Bones and Joints	Soft Tissue including Heart	13	0.8	<b>15.9 (8.5 to 27.2)</b>	<b>4.1 (2.1 to 7.3)</b>	18.2	27	0.3	<b>92.1 (60.7 to 134)</b>	<b>9.1 (6 to 13.3)</b>	41.2	29386
Bones and Joints	Testis	0	-	-	-	-	<5	<5	31 (3.8 to 112.1)	1.2 (0.1 to 4.3)	3.0	16683
Bones and Joints	Thyroid	7	4.4	1.6 (0.6 to 3.3)	0.9 (-0.5 to 3.4)	3.8	0	-	-	-	-	29386
Brain and ONS	Acute Lymphocytic Leukemia	<5	<5	4 (0.5 to 14.5)	0.2 (0 to 0.9)	2.1	0	-	-	-	-	73731
Brain and ONS	Acute Non-Lymphocytic Leukemia	8	1.9	<b>4.2 (1.8 to 8.3)</b>	<b>0.8 (0.2 to 1.9)</b>	8.6	<5	<5	2.7 (0.6 to 8)	0.3 (-0.1 to 1)	3.3	73731
Brain and ONS	Anus	<5	<5	1.6 (0.2 to 5.9)	0.1 (-0.1 to 0.8)	1.1	0	-	-	-	-	73731
Brain and ONS	Bones and Joints	7	0.6	<b>11.7 (4.7 to 24)</b>	<b>0.9 (0.3 to 1.9)</b>	9.0	8	0.2	<b>38.7 (16.7 to 76.2)</b>	<b>1.1 (0.4 to 2.1)</b>	13.4	73731
Brain and ONS	Breast (M)	<5	<5	4.3 (0.1 to 24)	0.2 (-0.1 to 1.4)	1.1	0	-	-	-	-	39543
Brain and ONS	Cervix Uteri	5	3.9	1.3 (0.4 to 3)	0.3 (-0.7 to 2.3)	1.5	<5	<5	1 (0 to 5.4)	0 (-0.3 to 1.3)	-	34188
Brain and ONS	Colon and Rectum	18	17.9	1 (0.6 to 1.6)	0 (-1 to 1.4)	0.1	6	4.9	1.2 (0.4 to 2.7)	0.1 (-0.4 to 1.1)	1.9	73731
Brain and ONS	Corpus Uteri, NOS	9	8.1	1.1 (0.5 to 2.1)	0.3 (-1.2 to 2.6)	1.2	<5	<5	1.3 (0 to 7.5)	0.1 (-0.2 to 1.4)	0.4	34188
Brain and ONS	Esophagus	<5	<5	1.1 (0.1 to 4)	0 (-0.2 to 0.7)	0.3	<5	<5	2.6 (0.7 to 6.6)	0.3 (-0.1 to 1.2)	4.2	73731
Brain and ONS	Gallbladder and Other Biliary	<5	<5	2.4 (0.3 to 8.7)	0.2 (-0.1 to 0.9)	1.6	<5	<5	3.7 (0.1 to 20.5)	0.1 (0 to 0.7)	1.3	73731
Brain and ONS	Head and Neck	21	9.2	<b>2.3 (1.4 to 3.5)</b>	<b>1.6 (0.5 to 3.1)</b>	16.6	<5	<5	2.5 (0.7 to 6.3)	0.3 (-0.1 to 1.2)	4.1	73731
Brain and ONS	Hodgkin Lymphoma	<5	<5	1.2 (0.3 to 3.5)	0.1 (-0.3 to 0.9)	0.7	0	-	-	-	-	73731
Brain and ONS	Kidney and Renal Pelvis	15	8.1	<b>1.8 (1 to 3)</b>	<b>0.9 (0 to 2.3)</b>	9.6	5	1.3	<b>3.7 (1.2 to 8.7)</b>	<b>0.5 (0 to 1.4)</b>	6.3	73731
Brain and ONS	Lung and Bronchus	23	16.9	1.4 (0.9 to 2)	0.8 (-0.3 to 2.4)	8.6	21	12.7	<b>1.7 (1 to 2.5)</b>	<b>1.1 (0 to 2.6)</b>	14.2	73731
Brain and ONS	Melanoma of the Skin	16	17.9	0.9 (0.5 to 1.5)	-0.3 (-1.2 to 1.1)	-	<5	<5	2.9 (0.8 to 7.3)	0.4 (0 to 1.2)	4.5	73731
Brain and ONS	Non-Hodgkin Lymphoma	12	12.4	1 (0.5 to 1.7)	-0.1 (-0.8 to 1.2)	-	<5	<5	2 (0.6 to 5.2)	0.3 (-0.1 to 1.1)	3.5	73731
Brain and ONS	Ovary	<5	<5	0.8 (0.2 to 2.2)	-0.3 (-1 to 1.4)	-	<5	<5	1.3 (0.2 to 4.7)	0.1 (-0.4 to 1.7)	0.8	34188

First primary cancer	Subsequent primary cancer	Obs	Exp.	Standardized incidence ratio (95% CI)	Absolute excess incidence per 10,000 (95% CI)	AEI (%) <sup>a</sup>	Obs.	Exp.	Standardized mortality ratio (95% CI)	AEM (95% CI)	AE M (%) <sup>b</sup>	Person Years at Risk
Brain and ONS	Small Intestine	<5	<5	2.6 (0.5 to 7.6)	0.3 (-0.1 to 1)	2.6	0	-	-	-	-	73731
Brain and ONS	Soft Tissue including Heart	9	2.0	<b>4.6 (2.1 to 8.7)</b>	<b>1 (0.3 to 2)</b>	9.9	15	0.7	<b>21.6 (12.1 to 35.6)</b>	<b>1.9 (1 to 3.3)</b>	24.6	73731
Brain and ONS	Stomach	5	2.7	1.9 (0.6 to 4.3)	0.3 (-0.1 to 1.2)	3.2	<5	<5	2.4 (0.5 to 7)	0.2 (-0.1 to 1)	3.0	73731
Brain and ONS	Thyroid	25	11.9	<b>2.1 (1.4 to 3.1)</b>	<b>1.8 (0.6 to 3.4)</b>	18.4	<5	<5	13.4 (1.6 to 48.3)	0.3 (0 to 1)	3.2	73731
Brain and ONS	Urinary Bladder	<5	<5	0.5 (0.1 to 1.4)	-0.4 (-0.8 to 0.3)	-	<5	<5	2.8 (0.3 to 9.9)	0.2 (-0.1 to 0.9)	2.2	73731
Brain and ONS	Vagina and Vulva	<5	<5	1.6 (0.2 to 5.9)	0.2 (-0.3 to 1.8)	1.1	0	-	-	-	-	34188
Breast (F)	Acute Lymphocytic Leukemia	<5	<5	0.4 (0 to 2.2)	0 (-0.1 to 0.1)	-	<5	<5	2.1 (0.4 to 6.3)	0 (0 to 0.2)	0.5	369017
Breast (F)	Acute Non-Lymphocytic Leukemia	37	14.8	<b>2.5 (1.8 to 3.5)</b>	<b>0.6 (0.3 to 1)</b>	4.4	31	9.4	<b>3.3 (2.3 to 4.7)</b>	<b>0.6 (0.3 to 0.9)</b>	6.2	369017
Breast (F)	Anus	15	12.3	1.2 (0.7 to 2)	0.1 (-0.1 to 0.3)	0.5	<5	<5	2.9 (0.8 to 7.5)	0.1 (0 to 0.2)	0.8	369017
Breast (F)	Bones and Joints	5	3.1	1.6 (0.5 to 3.8)	0.1 (0 to 0.2)	0.4	5	1.1	<b>4.7 (1.5 to 11.1)</b>	<b>0.1 (0 to 0.3)</b>	1.1	369017
Breast (F)	Brain and ONS	28	24.8	1.1 (0.8 to 1.6)	0.1 (-0.2 to 0.4)	0.6	30	17.4	<b>1.7 (1.2 to 2.5)</b>	<b>0.3 (0.1 to 0.7)</b>	3.6	369017
Breast (F)	Chronic Myeloid Leukemia	9	6.4	1.4 (0.6 to 2.7)	0.1 (-0.1 to 0.3)	0.5	<5	<5	0.8 (0 to 4.7)	0 (0 to 0.1)	-	369017
Breast (F)	Corpus Uteri, NOS	209	170.6	<b>1.2 (1.1 to 1.4)</b>	<b>1 (0.3 to 1.9)</b>	7.6	29	19.0	<b>1.5 (1 to 2.2)</b>	<b>0.3 (0 to 0.6)</b>	2.9	369017
Breast (F)	Esophagus	21	7.9	<b>2.7 (1.7 to 4.1)</b>	<b>0.4 (0.1 to 0.7)</b>	2.6	18	5.7	<b>3.2 (1.9 to 5)</b>	<b>0.3 (0.1 to 0.6)</b>	3.5	369017
Breast (F)	Eye and Orbit	<5	<5	0.8 (0.2 to 2.4)	0 (-0.1 to 0.1)	-	<5	<5	3.4 (0.1 to 18.9)	0 (0 to 0.1)	0.2	369017
Breast (F)	Gallbladder and Other Biliary	8	10.2	0.8 (0.3 to 1.6)	-0.1 (-0.2 to 0.2)	-	5	4.0	1.2 (0.4 to 2.9)	0 (-0.1 to 0.2)	0.3	369017
Breast (F)	Head and Neck	70	44.6	<b>1.6 (1.2 to 2)</b>	<b>0.7 (0.3 to 1.2)</b>	5.0	7	8.1	0.9 (0.3 to 1.8)	0 (-0.1 to 0.2)	-	369017
Breast (F)	Hodgkin Lymphoma	5	7.9	0.6 (0.2 to 1.5)	-0.1 (-0.2 to 0.1)	-	<5	<5	1.6 (0.2 to 5.9)	0 (0 to 0.2)	0.2	369017
Breast (F)	Kidney and Renal Pelvis	41	51.4	0.8 (0.6 to 1.1)	-0.3 (-0.6 to 0.1)	-	11	9.1	1.2 (0.6 to 2.2)	0.1 (-0.1 to 0.3)	0.5	369017
Breast (F)	Liver and Intrahepatic Bile Duct	19	17.9	1.1 (0.6 to 1.7)	0 (-0.2 to 0.3)	0.2	19	13.8	1.4 (0.8 to 2.2)	0.1 (-0.1 to 0.4)	1.5	369017
Breast (F)	Lung and Bronchus	293	213.8	<b>1.4 (1.2 to 1.5)</b>	<b>2.1 (1.3 to 3.1)</b>	15.7	193	143.3	<b>1.3 (1.2 to 1.6)</b>	<b>1.3 (0.6 to 2.1)</b>	14.3	369017
Breast (F)	Melanoma of the Skin	102	108.7	0.9 (0.8 to 1.1)	-0.2 (-0.7 to 0.4)	-	10	7.9	1.3 (0.6 to 2.3)	0.1 (-0.1 to 0.3)	0.6	369017
Breast (F)	Mesothelioma	6	1.7	<b>3.5 (1.3 to 7.6)</b>	<b>0.1 (0 to 0.3)</b>	0.8	0	-	-	-	-	369017
Breast (F)	Non-Hodgkin Lymphoma	74	92.0	0.8 (0.6 to 1)	-0.5 (-0.9 to 0)	-	21	15.9	1.3 (0.8 to 2)	0.1 (-0.1 to 0.4)	1.5	369017
Breast (F)	Ovary	235	72.4	<b>3.2 (2.8 to 3.7)</b>	<b>4.4 (3.6 to 5.3)</b>	32.2	183	35.3	<b>5.2 (4.5 to 6)</b>	<b>4 (3.3 to 4.8)</b>	42.4	369017
Breast (F)	Pancreas	65	42.0	<b>1.5 (1.2 to 2)</b>	<b>0.6 (0.2 to 1.1)</b>	4.5	58	32.1	<b>1.8 (1.4 to 2.3)</b>	<b>0.7 (0.3 to 1.2)</b>	7.4	369017
Breast (F)	Soft Tissue including Heart	44	12.5	<b>3.5 (2.6 to 4.7)</b>	<b>0.9 (0.5 to 1.3)</b>	6.2	19	5.5	<b>3.4 (2.1 to 5.4)</b>	<b>0.4 (0.2 to 0.7)</b>	3.9	369017
Breast (F)	Stomach	25	19.5	1.3 (0.8 to 1.9)	0.1 (-0.1 to 0.5)	1.1	18	9.2	<b>1.9 (1.2 to 3.1)</b>	<b>0.2 (0 to 0.5)</b>	2.5	369017
Breast (F)	Thyroid	111	99.2	1.1 (0.9 to 1.3)	0.3 (-0.2 to 0.9)	2.3	<5	<5	1.2 (0.1 to 4.4)	0 (0 to 0.2)	0.1	369017
Breast (F)	Urinary Bladder	50	35.8	<b>1.4 (1 to 1.8)</b>	<b>0.4 (0 to 0.8)</b>	2.8	9	5.3	1.7 (0.8 to 3.2)	0.1 (0 to 0.3)	1.1	369017
Breast (F)	Vagina and Vulva	49	23.3	<b>2.1 (1.6 to 2.8)</b>	<b>0.7 (0.4 to 1.1)</b>	5.1	6	3.5	1.7 (0.6 to 3.7)	0.1 (0 to 0.3)	0.7	369017

First primary cancer	Subsequent primary cancer	Obs	Exp.	Standardized incidence ratio (95% CI)	Absolute excess incidence per 10,000 (95% CI)	AEI (%) <sup>a</sup>	Obs.	Exp.	Standardized mortality ratio (95% CI)	AEM (95% CI)	AE M (%) <sup>b</sup>	Person Years at Risk
Cervix Uteri	Acute Lymphocytic Leukemia	<5	<5	0.8 (0 to 4.6)	0 (-0.1 to 0.2)	-	<5	<5	1.5 (0 to 8.3)	0 (0 to 0.3)	0.2	184623
Cervix Uteri	Acute Non-Lymphocytic Leukemia	10	6.9	1.4 (0.7 to 2.7)	0.2 (-0.1 to 0.6)	1.5	6	4.3	1.4 (0.5 to 3)	0.1 (-0.1 to 0.5)	1.1	184623
Cervix Uteri	Anus	12	5.7	<b>2.1 (1.1 to 3.7)</b>	<b>0.3 (0 to 0.8)</b>	3.0	<5	<5	1.6 (0 to 8.8)	0 (0 to 0.3)	0.2	184623
Cervix Uteri	Bones and Joints	<5	<5	0.7 (0 to 3.7)	0 (-0.1 to 0.2)	-	<5	<5	4 (0.5 to 14.3)	0.1 (0 to 0.4)	1.0	184623
Cervix Uteri	Breast (F)	280	390.8	0.7 (0.6 to 0.8)	-6 (-7.7 to -4.1)	-	57	55.5	1 (0.8 to 1.3)	0.1 (-0.7 to 1)	0.9	184623
Cervix Uteri	Chronic Myeloid Leukemia	5	3.0	1.7 (0.5 to 3.9)	0.1 (-0.1 to 0.5)	1.0	<5	<5	3.5 (0.4 to 12.5)	0.1 (0 to 0.4)	0.9	184623
Cervix Uteri	Colon and Rectum	107	71.5	<b>1.5 (1.2 to 1.8)</b>	<b>1.9 (0.9 to 3.1)</b>	17.1	40	20.7	<b>1.9 (1.4 to 2.6)</b>	<b>1 (0.4 to 1.8)</b>	12.5	184623
Cervix Uteri	Esophagus	6	3.6	1.7 (0.6 to 3.6)	0.1 (-0.1 to 0.5)	1.1	<5	<5	1.5 (0.4 to 3.9)	0.1 (-0.1 to 0.4)	0.9	184623
Cervix Uteri	Gallbladder and Other Biliary	5	4.6	1.1 (0.4 to 2.5)	0 (-0.2 to 0.4)	0.2	<5	<5	2.2 (0.6 to 5.6)	0.1 (0 to 0.5)	1.4	184623
Cervix Uteri	Head and Neck	28	20.6	1.4 (0.9 to 2)	0.4 (-0.1 to 1.1)	3.5	8	3.7	2.1 (0.9 to 4.2)	0.2 (0 to 0.7)	2.8	184623
Cervix Uteri	Kidney and Renal Pelvis	28	23.7	1.2 (0.8 to 1.7)	0.2 (-0.3 to 0.9)	2.1	5	4.1	1.2 (0.4 to 2.8)	0 (-0.1 to 0.4)	0.6	184623
Cervix Uteri	Liver and Intrahepatic Bile Duct	12	8.3	1.4 (0.7 to 2.5)	0.2 (-0.1 to 0.7)	1.8	11	6.3	1.7 (0.9 to 3.1)	0.3 (0 to 0.7)	3.0	184623
Cervix Uteri	Lung and Bronchus	135	97.0	<b>1.4 (1.2 to 1.6)</b>	<b>2.1 (0.9 to 3.4)</b>	18.3	132	64.9	<b>2 (1.7 to 2.4)</b>	<b>3.6 (2.5 to 5)</b>	43.5	184623
Cervix Uteri	Melanoma of the Skin	34	52.7	0.6 (0.4 to 0.9)	-1 (-1.6 to -0.3)	-	5	3.7	1.3 (0.4 to 3.1)	0.1 (-0.1 to 0.4)	0.8	184623
Cervix Uteri	Mesothelioma	<5	<5	2.5 (0.3 to 9.2)	0.1 (0 to 0.3)	0.6	0	-	-	-	-	184623
Cervix Uteri	Myeloma	8	11.0	0.7 (0.3 to 1.4)	-0.2 (-0.4 to 0.3)	-	<5	<5	1 (0.3 to 2.6)	0 (-0.2 to 0.3)	0.1	184623
Cervix Uteri	Non-Hodgkin Lymphoma	44	42.3	1 (0.8 to 1.4)	0.1 (-0.6 to 0.9)	0.8	10	7.3	1.4 (0.7 to 2.5)	0.1 (-0.1 to 0.6)	1.8	184623
Cervix Uteri	Pancreas	24	19.2	1.2 (0.8 to 1.9)	0.3 (-0.2 to 0.9)	2.3	20	14.7	1.4 (0.8 to 2.1)	0.3 (-0.1 to 0.9)	3.4	184623
Cervix Uteri	Small Intestine	10	4.6	<b>2.2 (1 to 4)</b>	<b>0.3 (0 to 0.7)</b>	2.6	<5	<5	3.5 (0.4 to 12.6)	0.1 (0 to 0.4)	0.9	184623
Cervix Uteri	Soft Tissue including Heart	10	5.9	1.7 (0.8 to 3.1)	0.2 (-0.1 to 0.7)	2.0	13	2.6	<b>5 (2.7 to 8.6)</b>	<b>0.6 (0.2 to 1.1)</b>	6.7	184623
Cervix Uteri	Stomach	11	9.0	1.2 (0.6 to 2.2)	0.1 (-0.2 to 0.6)	0.9	7	4.3	1.6 (0.7 to 3.4)	0.1 (-0.1 to 0.5)	1.8	184623
Cervix Uteri	Urinary Bladder	46	16.2	<b>2.8 (2.1 to 3.8)</b>	<b>1.6 (0.9 to 2.4)</b>	14.3	19	2.4	<b>7.9 (4.8 to 12.4)</b>	<b>0.9 (0.5 to 1.5)</b>	10.8	184623
Cervix Uteri	Vagina and Vulva	51	10.8	<b>4.7 (3.5 to 6.2)</b>	<b>2.2 (1.5 to 3)</b>	19.3	9	1.6	<b>5.6 (2.5 to 10.5)</b>	<b>0.4 (0.1 to 0.8)</b>	4.8	184623
Chronic Myeloid Leukemia	Acute Lymphocytic Leukemia	<5	<5	51.3 (14 to 131.4)	3.5 (0.9 to 9.1)	10.4	9	0.0	<b>227 (103.8 to 431)</b>	<b>8 (3.6 to 15.2)</b>	22.7	11184
Chronic Myeloid Leukemia	Brain and ONS	0	-	-	-	-	<5	<5	5 (0.6 to 18.2)	1.4 (-0.1 to 6.1)	4.1	11184
Chronic Myeloid Leukemia	Breast (F)	<5	<5	0.3 (0 to 1.2)	-9.4 (-13.3 to 2.3)	-	<5	<5	2.6 (0.3 to 9.5)	2.8 (-1.2 to 14.5)	3.1	4471
Chronic Myeloid Leukemia	Breast (M)	<5	<5	42.5 (5.1 to 153.4)	2.9 (0.3 to 10.7)	5.2	0	-	-	-	-	6712
Chronic Myeloid Leukemia	Cervix Uteri	<5	<5	5.8 (1.2 to 17)	5.6 (0.2 to 18.5)	6.6	<5	<5	7.1 (0.2 to 39.5)	1.9 (-0.3 to 12.1)	2.2	4471
Chronic Myeloid Leukemia	Colon and Rectum	<5	<5	0.3 (0 to 1.8)	-1.9 (-2.8 to 2.2)	-	<5	<5	1.2 (0 to 6.6)	0.1 (-0.7 to 4.2)	0.4	11184
Chronic Myeloid Leukemia	Esophagus	0	-	-	-	-	<5	<5	3.6 (0.1 to 20.1)	0.6 (-0.2 to 4.7)	1.8	11184
Chronic Myeloid Leukemia	Head and Neck	14	1.6	<b>8.5 (4.6 to 14.2)</b>	<b>11 (5.4 to 19.5)</b>	32.8	<5	<5	6.8 (0.8 to 24.5)	1.5 (0 to 6.2)	4.3	11184

First primary cancer	Subsequent primary cancer	Obs	Exp.	Standardized incidence ratio (95% CI)	Absolute excess incidence per 10,000 (95% CI)	AEI (%) <sup>a</sup>	Obs.	Exp.	Standardized mortality ratio (95% CI)	AEM (95% CI)	AE M (%) <sup>b</sup>	Person Years at Risk
Chronic Myeloid Leukemia	Hodgkin Lymphoma	<5	<5	5.7 (0.7 to 20.4)	1.5 (-0.1 to 6.1)	4.4	<5	<5	26.9 (0.7 to 149.9)	0.9 (0 to 4.9)	2.4	11184
Chronic Myeloid Leukemia	Kidney and Renal Pelvis	<5	<5	0.7 (0 to 3.7)	-0.4 (-1.3 to 3.7)	-	<5	<5	4.4 (0.1 to 24.6)	0.7 (-0.2 to 4.8)	2.0	11184
Chronic Myeloid Leukemia	Liver and Intrahepatic Bile Duct	<5	<5	1.4 (0 to 7.9)	0.3 (-0.6 to 4.3)	0.8	<5	<5	2.2 (0.1 to 12.2)	0.5 (-0.4 to 4.6)	1.4	11184
Chronic Myeloid Leukemia	Lung and Bronchus	<5	<5	0.4 (0 to 2.2)	-1.4 (-2.3 to 2.7)	-	<5	<5	1 (0.1 to 3.7)	0.1 (-1.5 to 4.7)	0.2	11184
Chronic Myeloid Leukemia	Melanoma of the Skin	<5	<5	1.1 (0.2 to 3.3)	0.3 (-1.8 to 5.5)	1.0	<5	<5	4.9 (0.1 to 27.3)	0.7 (-0.2 to 4.8)	2.0	11184
Chronic Myeloid Leukemia	Myeloma	<5	<5	2.3 (0.1 to 12.8)	0.5 (-0.4 to 4.6)	1.5	0	-	-	-	-	11184
Chronic Myeloid Leukemia	Non-Hodgkin Lymphoma	<5	<5	0.5 (0 to 2.8)	-0.9 (-1.8 to 3.2)	-	<5	<5	6.7 (0.8 to 24.1)	1.5 (-0.1 to 6.2)	4.3	11184
Chronic Myeloid Leukemia	Pancreas	<5	<5	1.5 (0 to 8.1)	0.3 (-0.6 to 4.4)	0.8	0	-	-	-	-	11184
Chronic Myeloid Leukemia	Prostate	8	4.2	1.9 (0.8 to 3.7)	5.7 (-1.1 to 17.2)	10.1	<5	<5	7.8 (0.2 to 43.4)	1.3 (-0.2 to 8.1)	2.2	6712
Chronic Myeloid Leukemia	Soft Tissue including Heart	0	-	-	-	-	<5	<5	9 (0.2 to 50)	0.8 (-0.1 to 4.9)	2.2	11184
Chronic Myeloid Leukemia	Stomach	0	-	-	-	-	<5	<5	4.5 (0.1 to 25)	0.7 (-0.2 to 4.8)	2.0	11184
Chronic Myeloid Leukemia	Thyroid	<5	<5	2.2 (0.6 to 5.6)	1.9 (-0.7 to 7.5)	5.8	0	-	-	-	-	11184
Chronic Myeloid Leukemia	Urinary Bladder	<5	<5	3 (0.6 to 8.7)	1.8 (-0.4 to 6.9)	5.3	0	-	-	-	-	11184
Chronic Myeloid Leukemia	Vagina and Vulva	<5	<5	6.3 (0.2 to 35)	1.9 (-0.3 to 12.1)	2.2	0	-	-	-	-	4471
Colon and Rectum	Acute Non-Lymphocytic Leukemia	0	-	-	-	-	<5	<5	1.9 (0.5 to 4.9)	0.2 (-0.1 to 1.1)	2.2	77069
Colon and Rectum	Acute Non-Lymphocytic Leukemia	<5	<5	1.2 (0.3 to 3.2)	0.1 (-0.3 to 0.9)	0.5	0	-	-	-	-	77069
Colon and Rectum	Bones and Joints	<5	<5	4.3 (0.9 to 12.7)	0.3 (0 to 1)	1.4	<5	<5	3.7 (0.1 to 20.4)	0.1 (0 to 0.7)	0.8	77069
Colon and Rectum	Brain and ONS	10	5.9	1.7 (0.8 to 3.1)	0.5 (-0.1 to 1.6)	2.4	13	4.1	<b>3.2 (1.7 to 5.4)</b>	<b>1.2 (0.4 to 2.4)</b>	10.4	77069
Colon and Rectum	Breast (F)	99	85.9	1.2 (0.9 to 1.4)	3.3 (-1.4 to 8.7)	7.7	17	12.3	1.4 (0.8 to 2.2)	1.2 (-0.6 to 3.7)	5.5	39932
Colon and Rectum	Chronic Myeloid Leukemia	<5	<5	1.3 (0.2 to 4.7)	0.1 (-0.2 to 0.7)	0.3	<5	<5	3.4 (0.1 to 19.2)	0.1 (0 to 0.7)	0.8	77069
Colon and Rectum	Corpus Uteri, NOS	62	17.1	<b>3.6 (2.8 to 4.7)</b>	<b>11.2 (7.6 to 15.6)</b>	26.5	<5	<5	1 (0.1 to 3.6)	0 (-0.4 to 1.3)	-	39932
Colon and Rectum	Eye and Orbit	<5	<5	3.8 (0.8 to 11)	0.3 (0 to 1)	1.3	0	-	-	-	-	77069
Colon and Rectum	Gallbladder and Other Biliary	12	2.0	<b>6.1 (3.2 to 10.7)</b>	<b>1.3 (0.5 to 2.5)</b>	5.9	<5	<5	5.9 (1.6 to 15)	0.4 (0.1 to 1.2)	3.9	77069
Colon and Rectum	Head and Neck	11	16.7	0.7 (0.3 to 1.2)	-0.7 (-1.5 to 0.4)	-	<5	<5	1.2 (0.3 to 3)	0.1 (-0.3 to 0.9)	0.7	77069
Colon and Rectum	Hodgkin Lymphoma	<5	<5	0.5 (0 to 2.6)	-0.2 (-0.3 to 0.4)	-	<5	<5	3.1 (0.1 to 17.3)	0.1 (0 to 0.7)	0.8	77069
Colon and Rectum	Kidney and Renal Pelvis	18	14.9	1.2 (0.7 to 1.9)	0.4 (-0.5 to 1.8)	1.8	<5	<5	0.7 (0.1 to 2.5)	-0.1 (-0.3 to 0.6)	-	77069
Colon and Rectum	Liver and Intrahepatic Bile Duct	13	7.8	1.7 (0.9 to 2.9)	0.7 (-0.1 to 1.9)	3.1	13	5.2	<b>2.5 (1.3 to 4.3)</b>	<b>1 (0.2 to 2.2)</b>	9.1	77069
Colon and Rectum	Lung and Bronchus	42	43.6	1 (0.7 to 1.3)	-0.2 (-1.7 to 1.7)	-	35	32.2	1.1 (0.8 to 1.5)	0.4 (-1 to 2.1)	3.3	77069
Colon and Rectum	Myeloma	<5	<5	0.7 (0.2 to 1.8)	-0.2 (-0.6 to 0.6)	-	7	2.0	<b>3.5 (1.4 to 7.2)</b>	<b>0.7 (0.1 to 1.6)</b>	5.9	77069
Colon and Rectum	Ovary	8	7.2	1.1 (0.5 to 2.2)	0.2 (-0.9 to 2.1)	0.5	0	-	-	-	-	39932
Colon and Rectum	Pancreas	20	9.5	<b>2.1 (1.3 to 3.3)</b>	<b>1.4 (0.4 to 2.8)</b>	6.2	18	7.4	<b>2.4 (1.4 to 3.9)</b>	<b>1.4 (0.4 to 2.7)</b>	12.4	77069
Colon and Rectum	Prostate	53	54.6	1 (0.7 to 1.3)	-0.4 (-4 to 4)	-	<5	<5	1.6 (0.4 to 4.1)	0.4 (-0.4 to 2.1)	1.8	37137

First primary cancer	Subsequent primary cancer	Obs	Exp.	Standardized incidence ratio (95% CI)	Absolute excess incidence per 10,000 (95% CI)	AEI (%) <sup>a</sup>	Obs.	Exp.	Standardized mortality ratio (95% CI)	AEM (95% CI)	AE M (%) <sup>b</sup>	Person Years at Risk
Colon and Rectum	Small Intestine	28	2.2	<b>12.6 (8.3 to 18.1)</b>	<b>3.3 (2.1 to 5)</b>	15.2	11	0.3	<b>37.9 (18.9 to 67.9)</b>	<b>1.4 (0.7 to 2.5)</b>	12.5	77069
Colon and Rectum	Soft Tissue including Heart	<5	<5	1.4 (0.4 to 3.6)	0.2 (-0.2 to 1)	0.7	<5	<5	3.5 (1 to 9.1)	0.4 (0 to 1.2)	3.4	77069
Colon and Rectum	Stomach	20	5.6	<b>3.6 (2.2 to 5.5)</b>	<b>1.9 (0.9 to 3.3)</b>	8.5	13	2.6	<b>5 (2.7 to 8.6)</b>	<b>1.4 (0.6 to 2.5)</b>	12.2	77069
Colon and Rectum	Thyroid	19	14.2	1.3 (0.8 to 2.1)	0.6 (-0.4 to 2)	2.8	0	-	-	-	-	77069
Colon and Rectum	Urinary Bladder	30	14.2	<b>2.1 (1.4 to 3)</b>	<b>2.1 (0.8 to 3.7)</b>	9.4	6	1.9	<b>3.2 (1.2 to 6.9)</b>	<b>0.5 (0 to 1.4)</b>	4.8	77069
Colon and Rectum	Vagina and Vulva	6	2.4	2.5 (0.9 to 5.5)	0.9 (0 to 2.7)	2.1	<5	<5	2.8 (0.1 to 15.4)	0.2 (-0.1 to 1.3)	0.7	39932
Corpus Uteri, NOS	Anus	<5	<5	1.8 (0.4 to 5.3)	0.3 (-0.2 to 1.3)	1.2	0	-	-	-	-	53474
Corpus Uteri, NOS	Bones and Joints	0	-	-	-	-	<5	<5	6.7 (0.2 to 37.4)	0.2 (0 to 1)	1.4	53474
Corpus Uteri, NOS	Brain and ONS	<5	<5	0.9 (0.2 to 2.5)	-0.1 (-0.5 to 1)	-	<5	<5	1.6 (0.4 to 4.2)	0.3 (-0.3 to 1.5)	2.5	53474
Corpus Uteri, NOS	Chronic Myeloid Leukemia	<5	<5	1.1 (0 to 6.2)	0 (-0.2 to 0.9)	0.1	0	-	-	-	-	53474
Corpus Uteri, NOS	Colon and Rectum	69	22.4	<b>3.1 (2.4 to 3.9)</b>	<b>8.7 (5.8 to 12.1)</b>	42.9	21	6.4	<b>3.3 (2 to 5)</b>	<b>2.7 (1.2 to 4.8)</b>	23.6	53474
Corpus Uteri, NOS	Esophagus	<5	<5	1.8 (0.2 to 6.6)	0.2 (-0.2 to 1.1)	0.8	<5	<5	5.1 (1.4 to 12.9)	0.6 (0.1 to 1.8)	5.2	53474
Corpus Uteri, NOS	Gallbladder and Other Biliary	<5	<5	2.7 (0.7 to 6.9)	0.5 (-0.1 to 1.6)	2.3	<5	<5	1.7 (0 to 9.4)	0.1 (-0.1 to 0.9)	0.7	53474
Corpus Uteri, NOS	Head and Neck	7	6.4	1.1 (0.4 to 2.3)	0.1 (-0.7 to 1.5)	0.6	<5	<5	1.7 (0.2 to 6.3)	0.2 (-0.2 to 1.1)	1.4	53474
Corpus Uteri, NOS	Kidney and Renal Pelvis	14	7.2	<b>1.9 (1.1 to 3.3)</b>	<b>1.3 (0.1 to 3)</b>	6.2	<5	<5	2.3 (0.5 to 6.7)	0.3 (-0.1 to 1.4)	2.7	53474
Corpus Uteri, NOS	Liver and Intrahepatic Bile Duct	6	2.6	2.3 (0.8 to 5)	0.6 (-0.1 to 2)	3.1	<5	<5	2 (0.5 to 5.1)	0.4 (-0.2 to 1.5)	3.2	53474
Corpus Uteri, NOS	Melanoma of the Skin	8	14.9	0.5 (0.2 to 1.1)	-1.3 (-2.1 to 0.2)	-	<5	<5	1.8 (0.2 to 6.5)	0.2 (-0.2 to 1.1)	1.4	53474
Corpus Uteri, NOS	Mesothelioma	<5	<5	8.1 (1 to 29.3)	0.3 (0 to 1.3)	1.6	0	-	-	-	-	53474
Corpus Uteri, NOS	Non-Hodgkin Lymphoma	21	13.1	1.6 (1 to 2.4)	1.5 (0 to 3.5)	7.3	<5	<5	1.7 (0.5 to 4.4)	0.3 (-0.2 to 1.5)	2.7	53474
Corpus Uteri, NOS	Pancreas	8	6.0	1.3 (0.6 to 2.6)	0.4 (-0.5 to 1.8)	1.8	5	4.6	1.1 (0.4 to 2.6)	0.1 (-0.5 to 1.3)	0.7	53474
Corpus Uteri, NOS	Small Intestine	6	1.4	<b>4.4 (1.6 to 9.6)</b>	<b>0.9 (0.2 to 2.2)</b>	4.3	<5	<5	11.7 (1.4 to 42.1)	0.3 (0 to 1.3)	3.0	53474
Corpus Uteri, NOS	Soft Tissue including Heart	12	1.8	<b>6.8 (3.5 to 11.8)</b>	<b>1.9 (0.8 to 3.6)</b>	9.4	22	0.8	<b>28.3 (17.7 to 42.8)</b>	<b>4 (2.4 to 6.1)</b>	34.3	53474
Corpus Uteri, NOS	Thyroid	20	14.2	1.4 (0.9 to 2.2)	1.1 (-0.4 to 3.1)	5.4	<5	<5	4.1 (0.1 to 23)	0.1 (0 to 1)	1.2	53474
Corpus Uteri, NOS	Urinary Bladder	10	5.2	1.9 (0.9 to 3.6)	0.9 (-0.1 to 2.5)	4.5	5	0.8	<b>6.7 (2.2 to 15.5)</b>	<b>0.8 (0.2 to 2)</b>	6.9	53474
Corpus Uteri, NOS	Vagina and Vulva	7	3.3	2.1 (0.9 to 4.4)	0.7 (-0.1 to 2.1)	3.4	<5	<5	8.1 (2.2 to 20.6)	0.7 (0.1 to 1.8)	5.7	53474
Eye and Orbit	Bones and Joints	0	-	-	-	-	<5	<5	35.7 (0.9 to 198.7)	1.2 (0 to 6.8)	1.6	8143
Eye and Orbit	Brain and ONS	<5	<5	1.6 (0 to 8.7)	0.4 (-0.8 to 6.1)	2.0	<5	<5	2.3 (0.1 to 12.9)	0.7 (-0.5 to 6.3)	0.9	8143
Eye and Orbit	Breast (F)	8	7.3	1.1 (0.5 to 2.2)	1.7 (-9.5 to 20.9)	3.9	0	-	-	-	-	4044
Eye and Orbit	Colon and Rectum	6	3.2	1.9 (0.7 to 4.1)	3.5 (-1.2 to 12.2)	15.6	<5	<5	2.1 (0.3 to 7.6)	1.3 (-0.9 to 7.7)	1.7	8143
Eye and Orbit	Corpus Uteri, NOS	<5	<5	1.4 (0.2 to 5.1)	1.5 (-2.9 to 14.4)	3.2	<5	<5	7.3 (0.2 to 40.8)	2.1 (-0.3 to 13.4)	1.4	4044
Eye and Orbit	Hodgkin Lymphoma	<5	<5	4 (0.1 to 22.2)	0.9 (-0.3 to 6.5)	4.1	0	-	-	-	-	8143
Eye and Orbit	Liver and Intrahepatic Bile Duct	<5	<5	2.9 (0.4 to 10.5)	1.6 (-0.5 to 8)	7.2	<5	<5	4.2 (0.5 to 15.3)	1.9 (-0.3 to 8.3)	2.5	8143

First primary cancer	Subsequent primary cancer	Obs	Exp.	Standardized incidence ratio (95% CI)	Absolute excess incidence per 10,000 (95% CI)	AEI (%) <sup>a</sup>	Obs.	Exp.	Standardized mortality ratio (95% CI)	AEM (95% CI)	AE M (%) <sup>b</sup>	Person Years at Risk
Eye and Orbit	Lung and Bronchus	6	3.9	1.6 (0.6 to 3.4)	2.6 (-2 to 11.3)	11.7	<5	<5	1 (0.2 to 2.9)	0 (-2.9 to 7.1)	0.0	8143
Eye and Orbit	Melanoma of the Skin	9	2.9	<b>3.1 (1.4 to 6)</b>	<b>7.5 (1.5 to 17.5)</b>	33.7	53	0.3	<b>210.4 (157.6 to 275.2)</b>	<b>64.8 (48.4 to 84.8)</b>	86.5	8143
Eye and Orbit	Myeloma	0	-	-	-	-	<5	<5	6 (0.2 to 33.3)	1 (-0.2 to 6.6)	1.4	8143
Eye and Orbit	Ovary	<5	<5	1.6 (0 to 8.9)	0.9 (-1.5 to 12.2)	2.1	<5	<5	3.6 (0.1 to 20.1)	1.8 (-0.6 to 13.1)	1.2	4044
Eye and Orbit	Soft Tissue including Heart	0	-	-	-	-	<5	<5	9.3 (0.2 to 52)	1.1 (-0.1 to 6.7)	1.5	8143
Eye and Orbit	Stomach	<5	<5	2 (0.1 to 11.3)	0.6 (-0.6 to 6.2)	2.8	0	-	-	-	-	8143
Eye and Orbit	Thyroid	<5	<5	2.7 (0.7 to 6.8)	3.1 (-0.5 to 10.7)	13.7	0	-	-	-	-	8143
Eye and Orbit	Urinary Bladder	0	-	-	-	-	<5	<5	5.3 (0.1 to 29.3)	1 (-0.2 to 6.6)	1.3	8143
Head and Neck	Acute Lymphocytic Leukemia	<5	<5	1.9 (0 to 10.5)	0.1 (-0.1 to 0.7)	0.4	0	-	-	-	-	70464
Head and Neck	Acute Non-Lymphocytic Leukemia	5	2.8	1.8 (0.6 to 4.1)	0.3 (-0.2 to 1.3)	1.9	<5	<5	1.6 (0.3 to 4.8)	0.2 (-0.2 to 1)	1.1	70464
Head and Neck	Anus	<5	<5	1.8 (0.4 to 5.3)	0.2 (-0.1 to 1)	1.2	0	-	-	-	-	70464
Head and Neck	Bones and Joints	9	0.6	<b>14.4 (6.6 to 27.3)</b>	<b>1.2 (0.5 to 2.3)</b>	7.2	6	0.2	<b>24.3 (8.9 to 52.9)</b>	<b>0.8 (0.3 to 1.8)</b>	5.6	70464
Head and Neck	Brain and ONS	8	5.3	1.5 (0.6 to 3)	0.4 (-0.3 to 1.5)	2.3	16	3.7	<b>4.4 (2.5 to 7.1)</b>	<b>1.8 (0.8 to 3.2)</b>	12.1	70464
Head and Neck	Breast (F)	53	59.5	0.9 (0.7 to 1.2)	-2 (-6.2 to 3.1)	-	10	8.1	1.2 (0.6 to 2.3)	0.6 (-1 to 3.2)	1.8	31723
Head and Neck	Cervix Uteri	<5	<5	1.1 (0.3 to 2.7)	0.1 (-0.9 to 2)	0.2	<5	<5	1.7 (0.2 to 6)	0.3 (-0.3 to 1.9)	0.8	31723
Head and Neck	Chronic Myeloid Leukemia	<5	<5	3 (0.8 to 7.6)	0.4 (0 to 1.3)	2.3	<5	<5	3.8 (0.1 to 21)	0.1 (0 to 0.8)	0.7	70464
Head and Neck	Esophagus	16	3.7	<b>4.3 (2.5 to 7)</b>	<b>1.7 (0.8 to 3.2)</b>	10.6	14	3.2	<b>4.4 (2.4 to 7.4)</b>	<b>1.5 (0.6 to 2.9)</b>	10.6	70464
Head and Neck	Eye and Orbit	<5	<5	2.8 (0.3 to 10.1)	0.2 (-0.1 to 0.9)	1.1	<5	<5	17.7 (0.4 to 98.6)	0.1 (0 to 0.8)	0.9	70464
Head and Neck	Gallbladder and Other Biliary	<5	<5	0.6 (0 to 3.5)	-0.1 (-0.2 to 0.6)	-	<5	<5	1.9 (0 to 10.4)	0.1 (-0.1 to 0.7)	0.5	70464
Head and Neck	Kidney and Renal Pelvis	10	13.0	0.8 (0.4 to 1.4)	-0.4 (-1.2 to 0.8)	-	5	2.6	1.9 (0.6 to 4.5)	0.3 (-0.1 to 1.3)	2.3	70464
Head and Neck	Liver and Intrahepatic Bile Duct	12	7.1	1.7 (0.9 to 3)	0.7 (-0.1 to 2)	4.2	8	4.7	1.7 (0.7 to 3.3)	0.5 (-0.2 to 1.6)	3.2	70464
Head and Neck	Lung and Bronchus	68	36.1	<b>1.9 (1.5 to 2.4)</b>	<b>4.5 (2.4 to 7.1)</b>	27.6	63	27.4	<b>2.3 (1.8 to 2.9)</b>	<b>5 (3 to 7.5)</b>	34.8	70464
Head and Neck	Melanoma of the Skin	27	21.7	1.2 (0.8 to 1.8)	0.7 (-0.6 to 2.5)	4.6	6	2.0	<b>3 (1.1 to 6.5)</b>	<b>0.6 (0 to 1.6)</b>	3.9	70464
Head and Neck	Myeloma	5	4.5	1.1 (0.4 to 2.6)	0.1 (-0.4 to 1)	0.4	<5	<5	0.6 (0 to 3.4)	-0.1 (-0.2 to 0.6)	-	70464
Head and Neck	Non-Hodgkin Lymphoma	32	19.2	<b>1.7 (1.1 to 2.4)</b>	<b>1.8 (0.4 to 3.7)</b>	11.1	8	3.7	2.2 (0.9 to 4.3)	0.6 (0 to 1.7)	4.2	70464
Head and Neck	Ovary	5	5.1	1 (0.3 to 2.3)	0 (-1.1 to 2.1)	-	<5	<5	1.3 (0.3 to 3.8)	0.2 (-0.5 to 2)	0.7	31723
Head and Neck	Pancreas	9	7.9	1.1 (0.5 to 2.2)	0.2 (-0.5 to 1.3)	0.9	11	6.2	1.8 (0.9 to 3.2)	0.7 (-0.1 to 1.9)	4.7	70464
Head and Neck	Soft Tissue including Heart	8	2.5	<b>3.2 (1.4 to 6.3)</b>	<b>0.8 (0.1 to 1.9)</b>	4.8	9	1.0	<b>9.4 (4.3 to 17.9)</b>	<b>1.1 (0.4 to 2.3)</b>	7.9	70464
Head and Neck	Thyroid	21	11.8	<b>1.8 (1.1 to 2.7)</b>	<b>1.3 (0.2 to 2.9)</b>	7.9	<5	<5	3.6 (0.1 to 20.3)	0.1 (0 to 0.8)	0.7	70464
Head and Neck	Vagina and Vulva	<5	<5	0.6 (0 to 3.4)	-0.2 (-0.5 to 1.2)	-	<5	<5	4.3 (0.1 to 23.9)	0.2 (-0.1 to 1.7)	0.7	31723
Hodgkin Lymphoma (F)	Acute Lymphocytic Leukemia	<5	<5	5.2 (1.1 to 15.2)	0.2 (0 to 0.8)	0.3	<5	<5	3.3 (0.1 to 18.4)	0.1 (0 to 0.5)	0.2	102533

First primary cancer	Subsequent primary cancer	Obs	Exp.	Standardized incidence ratio (95% CI)	Absolute excess incidence per 10,000 (95% CI)	AEI (%) <sup>a</sup>	Obs.	Exp.	Standardized mortality ratio (95% CI)	AEM (95% CI)	AE M (%) <sup>b</sup>	Person Years at Risk
Hodgkin Lymphoma (F)	Acute Non-Lymphocytic Leukemia	22	2.5	<b>8.6 (5.4 to 13.1)</b>	<b>1.9 (1.1 to 3)</b>	2.6	25	1.4	<b>17.8 (11.5 to 26.2)</b>	<b>2.3 (1.4 to 3.5)</b>	7.2	102533
Hodgkin Lymphoma (F)	Anus	13	2.1	<b>6.3 (3.4 to 10.8)</b>	<b>1.1 (0.5 to 2)</b>	1.5	<5	<5	9.3 (1.1 to 33.5)	0.2 (0 to 0.7)	0.5	102533
Hodgkin Lymphoma (F)	Bones and Joints	5	0.7	<b>6.7 (2.2 to 15.6)</b>	<b>0.4 (0.1 to 1.1)</b>	0.6	<5	<5	18.3 (5 to 46.9)	0.4 (0.1 to 1)	1.2	102533
Hodgkin Lymphoma (F)	Brain and ONS	9	5.1	1.8 (0.8 to 3.3)	0.4 (-0.1 to 1.2)	0.5	9	2.9	<b>3.1 (1.4 to 5.9)</b>	<b>0.6 (0.1 to 1.4)</b>	1.9	102533
Hodgkin Lymphoma (F)	Breast (F)	466	139.5	<b>3.3 (3 to 3.7)</b>	<b>31.8 (27.8 to 36.2)</b>	43.5	102	17.4	<b>5.9 (4.8 to 7.1)</b>	<b>8.3 (6.4 to 10.4)</b>	25.8	102533
Hodgkin Lymphoma (F)	Cervix Uteri	18	11.7	1.5 (0.9 to 2.4)	0.6 (-0.1 to 1.6)	0.8	9	3.1	<b>2.9 (1.3 to 5.5)</b>	<b>0.6 (0.1 to 1.4)</b>	1.8	102533
Hodgkin Lymphoma (F)	Chronic Myeloid Leukemia	<5	<5	1.7 (0.2 to 6.1)	0.1 (-0.1 to 0.6)	0.1	0	-	-	-	-	102533
Hodgkin Lymphoma (F)	Colon and Rectum	48	22.4	<b>2.1 (1.6 to 2.8)</b>	<b>2.5 (1.3 to 4)</b>	3.4	11	5.9	1.9 (0.9 to 3.3)	0.5 (0 to 1.3)	1.5	102533
Hodgkin Lymphoma (F)	Corpus Uteri, NOS	36	24.9	<b>1.4 (1 to 2)</b>	<b>1.1 (0 to 2.4)</b>	1.5	8	2.3	<b>3.5 (1.5 to 7)</b>	<b>0.6 (0.1 to 1.3)</b>	1.7	102533
Hodgkin Lymphoma (F)	Esophagus	9	0.9	<b>9.9 (4.5 to 18.8)</b>	<b>0.8 (0.3 to 1.6)</b>	1.1	7	0.7	<b>10.7 (4.3 to 22.1)</b>	<b>0.6 (0.2 to 1.3)</b>	1.9	102533
Hodgkin Lymphoma (F)	Gallbladder and Other Biliary	5	1.2	<b>4.2 (1.4 to 9.8)</b>	<b>0.4 (0 to 1)</b>	0.5	<5	<5	4.4 (0.5 to 15.8)	0.2 (0 to 0.7)	0.5	102533
Hodgkin Lymphoma (F)	Head and Neck	37	6.8	<b>5.4 (3.8 to 7.5)</b>	<b>2.9 (1.9 to 4.3)</b>	4.0	0	-	-	-	-	102533
Hodgkin Lymphoma (F)	Kaposi Sarcoma	<5	<5	14.3 (0.4 to 79.7)	0.1 (0 to 0.5)	0.1	0	-	-	-	-	102533
Hodgkin Lymphoma (F)	Kidney and Renal Pelvis	12	7.9	1.5 (0.8 to 2.6)	0.4 (-0.2 to 1.3)	0.5	<5	<5	0.9 (0 to 5)	0 (-0.1 to 0.4)	-	102533
Hodgkin Lymphoma (F)	Liver and Intrahepatic Bile Duct	8	2.2	<b>3.6 (1.6 to 7.2)</b>	<b>0.6 (0.1 to 1.3)</b>	0.8	<5	<5	1.8 (0.4 to 5.3)	0.1 (-0.1 to 0.7)	0.4	102533
Hodgkin Lymphoma (F)	Lung and Bronchus	103	23.9	<b>4.3 (3.5 to 5.2)</b>	<b>7.7 (5.9 to 9.9)</b>	10.5	82	16.1	<b>5.1 (4 to 6.3)</b>	<b>6.4 (4.8 to 8.4)</b>	20.1	102533
Hodgkin Lymphoma (F)	Melanoma of the Skin	30	26.5	1.1 (0.8 to 1.6)	0.3 (-0.6 to 1.6)	0.5	<5	<5	2.7 (0.7 to 7)	0.2 (0 to 0.9)	0.8	102533
Hodgkin Lymphoma (F)	Mesothelioma	8	0.3	<b>30.8 (13.3 to 60.7)</b>	<b>0.8 (0.3 to 1.5)</b>	1.0	0	-	-	-	-	102533
Hodgkin Lymphoma (F)	Myeloma	6	2.9	2.1 (0.8 to 4.6)	0.3 (-0.1 to 1)	0.4	<5	<5	3.6 (0.7 to 10.6)	0.2 (0 to 0.8)	0.7	102533
Hodgkin Lymphoma (F)	Non-Hodgkin Lymphoma	44	13.9	<b>3.2 (2.3 to 4.2)</b>	<b>2.9 (1.8 to 4.4)</b>	4.0	63	1.9	<b>32.4 (24.9 to 41.4)</b>	<b>6 (4.5 to 7.7)</b>	18.6	102533
Hodgkin Lymphoma (F)	Ovary	15	11.8	1.3 (0.7 to 2.1)	0.3 (-0.3 to 1.3)	0.4	7	4.7	1.5 (0.6 to 3.1)	0.2 (-0.2 to 1)	0.7	102533
Hodgkin Lymphoma (F)	Pancreas	18	5.0	<b>3.6 (2.1 to 5.7)</b>	<b>1.3 (0.6 to 2.3)</b>	1.7	19	3.6	<b>5.2 (3.1 to 8.2)</b>	<b>1.5 (0.8 to 2.5)</b>	4.7	102533
Hodgkin Lymphoma (F)	Small Intestine	<5	<5	2 (0.4 to 5.9)	0.1 (-0.1 to 0.7)	0.2	<5	<5	6.3 (0.2 to 35.1)	0.1 (0 to 0.5)	0.3	102533
Hodgkin Lymphoma (F)	Soft Tissue including Heart	29	2.4	<b>11.9 (8 to 17.1)</b>	<b>2.6 (1.7 to 3.8)</b>	3.5	12	0.9	<b>12.9 (6.7 to 22.6)</b>	<b>1.1 (0.5 to 2)</b>	3.4	102533
Hodgkin Lymphoma (F)	Stomach	12	2.7	<b>4.4 (2.3 to 7.7)</b>	<b>0.9 (0.3 to 1.8)</b>	1.2	12	1.3	<b>9.4 (4.9 to 16.4)</b>	<b>1 (0.5 to 1.9)</b>	3.3	102533
Hodgkin Lymphoma (F)	Thyroid	103	26.7	<b>3.9 (3.1 to 4.7)</b>	<b>7.4 (5.6 to 9.6)</b>	10.2	<5	<5	5 (0.1 to 27.9)	0.1 (0 to 0.5)	0.2	102533
Hodgkin Lymphoma (F)	Urinary Bladder	<5	<5	0.7 (0.1 to 2)	-0.1 (-0.4 to 0.4)	-	<5	<5	3.4 (0.4 to 12.4)	0.1 (0 to 0.6)	0.4	102533
Hodgkin Lymphoma (F)	Vagina and Vulva	12	3.8	<b>3.2 (1.6 to 5.5)</b>	<b>0.8 (0.2 to 1.7)</b>	1.1	<5	<5	4.1 (0.5 to 14.9)	0.1 (0 to 0.7)	0.5	102533
Hodgkin Lymphoma (M)	Acute Lymphocytic Leukemia	<5	<5	2.4 (0.3 to 8.8)	0.1 (-0.1 to 0.6)	0.3	<5	<5	6.6 (1.4 to 19.4)	0.2 (0 to 0.8)	0.8	104855
Hodgkin Lymphoma (M)	Acute Non-Lymphocytic Leukemia	21	3.2	<b>6.7 (4.1 to 10.2)</b>	<b>1.7 (0.9 to 2.8)</b>	4.1	22	2.0	<b>11.2 (7 to 17)</b>	<b>1.9 (1.1 to 3)</b>	6.0	104855
Hodgkin Lymphoma (M)	Anus	<5	<5	2.3 (0.6 to 5.8)	0.2 (-0.1 to 0.8)	0.5	0	-	-	-	-	104855

First primary cancer	Subsequent primary cancer	Obs	Exp.	Standardized incidence ratio (95% CI)	Absolute excess incidence per 10,000 (95% CI)	AEI (%) <sup>a</sup>	Obs.	Exp.	Standardized mortality ratio (95% CI)	AEM (95% CI)	AE M (%) <sup>b</sup>	Person Years at Risk
Hodgkin Lymphoma (M)	Bones and Joints	7	1.0	<b>7.3 (2.9 to 15)</b>	<b>0.6 (0.2 to 1.3)</b>	1.4	6	0.4	<b>15.9 (5.8 to 34.6)</b>	<b>0.5 (0.2 to 1.2)</b>	1.7	104855
Hodgkin Lymphoma (M)	Brain and ONS	12	7.6	1.6 (0.8 to 2.8)	0.4 (-0.1 to 1.3)	1.0	15	4.8	<b>3.1 (1.7 to 5.1)</b>	<b>1 (0.3 to 1.9)</b>	3.0	104855
Hodgkin Lymphoma (M)	Breast (M)	<5	<5	3.9 (0.8 to 11.5)	0.2 (0 to 0.8)	0.5	<5	<5	13.4 (1.6 to 48.3)	0.2 (0 to 0.7)	0.6	104855
Hodgkin Lymphoma (M)	Chronic Myeloid Leukemia	<5	<5	1.1 (0.1 to 3.9)	0 (-0.2 to 0.5)	0.0	<5	<5	5.8 (0.7 to 21)	0.2 (0 to 0.7)	0.5	104855
Hodgkin Lymphoma (M)	Colon and Rectum	51	31.8	<b>1.6 (1.2 to 2.1)</b>	<b>1.8 (0.6 to 3.4)</b>	4.4	32	9.4	<b>3.4 (2.3 to 4.8)</b>	<b>2.2 (1.2 to 3.4)</b>	6.7	104855
Hodgkin Lymphoma (M)	Esophagus	16	5.0	<b>3.2 (1.8 to 5.2)</b>	<b>1 (0.4 to 2)</b>	2.5	16	4.4	<b>3.6 (2.1 to 5.8)</b>	<b>1.1 (0.4 to 2.1)</b>	3.4	104855
Hodgkin Lymphoma (M)	Gallbladder and Other Biliary	<5	<5	2.2 (0.5 to 6.5)	0.2 (-0.1 to 0.7)	0.4	<5	<5	7.9 (1.6 to 22.9)	0.3 (0 to 0.8)	0.8	104855
Hodgkin Lymphoma (M)	Head and Neck	41	21.5	<b>1.9 (1.4 to 2.6)</b>	<b>1.9 (0.8 to 3.3)</b>	4.5	8	4.2	1.9 (0.8 to 3.8)	0.4 (-0.1 to 1.1)	1.1	104855
Hodgkin Lymphoma (M)	Kidney and Renal Pelvis	31	17.1	<b>1.8 (1.2 to 2.6)</b>	<b>1.3 (0.4 to 2.6)</b>	3.2	6	3.2	1.9 (0.7 to 4.1)	0.3 (-0.1 to 0.9)	0.8	104855
Hodgkin Lymphoma (M)	Liver and Intrahepatic Bile Duct	16	8.9	<b>1.8 (1 to 2.9)</b>	<b>0.7 (0 to 1.6)</b>	1.6	15	5.8	<b>2.6 (1.4 to 4.3)</b>	<b>0.9 (0.2 to 1.8)</b>	2.7	104855
Hodgkin Lymphoma (M)	Lung and Bronchus	145	30.9	<b>4.7 (4 to 5.5)</b>	<b>10.9 (8.7 to 13.3)</b>	26.1	127	25.8	<b>4.9 (4.1 to 5.9)</b>	<b>9.7 (7.6 to 11.9)</b>	30.1	104855
Hodgkin Lymphoma (M)	Melanoma of the Skin	39	28.0	1.4 (1 to 1.9)	1.1 (0 to 2.4)	2.5	7	2.8	2.5 (1 to 5.1)	0.4 (0 to 1.1)	1.2	104855
Hodgkin Lymphoma (M)	Mesothelioma	<5	<5	5.7 (1.2 to 16.6)	0.2 (0 to 0.8)	0.6	0	-	-	-	-	104855
Hodgkin Lymphoma (M)	Myeloma	6	4.7	1.3 (0.5 to 2.8)	0.1 (-0.2 to 0.8)	0.3	<5	<5	2.6 (0.7 to 6.7)	0.2 (0 to 0.8)	0.7	104855
Hodgkin Lymphoma (M)	Non-Hodgkin Lymphoma	102	24.0	<b>4.2 (3.5 to 5.2)</b>	<b>7.4 (5.6 to 9.5)</b>	17.9	82	4.3	<b>19.2 (15.3 to 23.9)</b>	<b>7.4 (5.8 to 9.3)</b>	23.1	104855
Hodgkin Lymphoma (M)	Pancreas	28	8.0	<b>3.5 (2.3 to 5.1)</b>	<b>1.9 (1 to 3.1)</b>	4.6	26	6.3	<b>4.1 (2.7 to 6)</b>	<b>1.9 (1 to 3)</b>	5.9	104855
Hodgkin Lymphoma (M)	Penis and Other Genital	<5	<5	2.9 (0.4 to 10.5)	0.1 (0 to 0.6)	0.3	0	-	-	-	-	104855
Hodgkin Lymphoma (M)	Prostate	80	80.6	1 (0.8 to 1.2)	-0.1 (-1.6 to 1.8)	-	5	2.9	1.7 (0.6 to 4)	0.2 (-0.1 to 0.8)	0.6	104855
Hodgkin Lymphoma (M)	Small Intestine	<5	<5	1.4 (0.3 to 4.2)	0.1 (-0.1 to 0.6)	0.2	<5	<5	3.9 (0.1 to 21.6)	0.1 (0 to 0.5)	0.2	104855
Hodgkin Lymphoma (M)	Soft Tissue including Heart	22	3.3	<b>6.6 (4.2 to 10)</b>	<b>1.8 (1 to 2.9)</b>	4.3	12	1.1	<b>10.5 (5.4 to 18.4)</b>	<b>1 (0.5 to 1.9)</b>	3.2	104855
Hodgkin Lymphoma (M)	Stomach	33	5.5	<b>6 (4.2 to 8.5)</b>	<b>2.6 (1.6 to 3.9)</b>	6.3	17	2.5	<b>6.8 (4 to 10.9)</b>	<b>1.4 (0.7 to 2.4)</b>	4.3	104855
Hodgkin Lymphoma (M)	Thyroid	29	8.3	<b>3.5 (2.3 to 5)</b>	<b>2 (1.1 to 3.2)</b>	4.7	0	-	-	-	-	104855
Hodgkin Lymphoma (M)	Urinary Bladder	21	16.3	1.3 (0.8 to 2)	0.4 (-0.3 to 1.5)	1.1	5	1.9	2.7 (0.9 to 6.2)	0.3 (0 to 0.9)	0.9	104855
Kaposi Sarcoma (M)	Acute Non-Lymphocytic Leukemia	<5	<5	2 (0.1 to 11.2)	0.3 (-0.3 to 3.3)	0.5	<5	<5	3.5 (0.1 to 19.4)	0.5 (-0.2 to 3.5)	2.2	15256
Kaposi Sarcoma (M)	Anus	32	0.4	<b>81.2 (55.5 to 114.6)</b>	<b>20.7 (14.1 to 29.4)</b>	30.0	5	0.0	<b>128.4 (41.7 to 299.7)</b>	<b>3.3 (1 to 7.6)</b>	15.6	15256
Kaposi Sarcoma (M)	Bones and Joints	<5	<5	6.9 (0.2 to 38.6)	0.6 (-0.1 to 3.6)	0.8	<5	<5	35.6 (4.3 to 128.7)	1.3 (0.1 to 4.7)	6.1	15256
Kaposi Sarcoma (M)	Brain and ONS	<5	<5	1.7 (0.2 to 6.3)	0.6 (-0.6 to 4)	0.8	<5	<5	1.3 (0 to 7.3)	0.2 (-0.5 to 3.2)	0.8	15256
Kaposi Sarcoma (M)	Breast (M)	<5	<5	7.2 (0.2 to 40.1)	0.6 (-0.1 to 3.6)	0.8	0	-	-	-	-	15256
Kaposi Sarcoma (M)	Colon and Rectum	7	5.8	1.2 (0.5 to 2.5)	0.8 (-1.9 to 5.7)	1.2	<5	<5	2.4 (0.7 to 6.2)	1.5 (-0.4 to 5.6)	7.4	15256
Kaposi Sarcoma (M)	Esophagus	<5	<5	3.7 (0.8 to 10.8)	1.4 (-0.1 to 5.2)	2.1	<5	<5	1.4 (0 to 7.6)	0.2 (-0.5 to 3.2)	0.9	15256
Kaposi Sarcoma (M)	Gallbladder and Other Biliary	<5	<5	8.7 (1.1 to 31.3)	1.2 (0 to 4.6)	1.7	<5	<5	32.3 (3.9 to 116.8)	1.3 (0.1 to 4.7)	6.1	15256
Kaposi Sarcoma (M)	Head and Neck	13	3.8	<b>3.4 (1.8 to 5.8)</b>	<b>6 (2 to 12.1)</b>	8.7	<5	<5	2.8 (0.3 to 10)	0.8 (-0.3 to 4.3)	4.0	15256



First primary cancer	Subsequent primary cancer	Obs	Exp.	Standardized incidence ratio (95% CI)	Absolute excess incidence per 10,000 (95% CI)	AEI (%) <sup>a</sup>	Obs.	Exp.	Standardized mortality ratio (95% CI)	AEM (95% CI)	AE M (%) <sup>b</sup>	Person Years at Risk
Kaposi Sarcoma (M)	Hodgkin Lymphoma	5	0.6	<b>9 (2.9 to 21)</b>	<b>2.9 (0.7 to 7.3)</b>	4.2	<5	<5	29.9 (3.6 to 108.1)	1.3 (0.1 to 4.7)	6.1	15256
Kaposi Sarcoma (M)	Kidney and Renal Pelvis	<5	<5	1.3 (0.3 to 3.2)	0.5 (-1.4 to 4.6)	0.8	0	-	-	-	-	15256
Kaposi Sarcoma (M)	Liver and Intrahepatic Bile Duct	9	1.7	<b>5.3 (2.4 to 10.2)</b>	<b>4.8 (1.6 to 10.1)</b>	7.0	8	1.1	<b>7.3 (3.2 to 14.4)</b>	<b>4.5 (1.5 to 9.6)</b>	21.8	15256
Kaposi Sarcoma (M)	Melanoma of the Skin	5	4.2	1.2 (0.4 to 2.8)	0.5 (-1.7 to 4.9)	0.7	<5	<5	2.4 (0.1 to 13.6)	0.4 (-0.3 to 3.4)	1.9	15256
Kaposi Sarcoma (M)	Non-Hodgkin Lymphoma	39	3.9	<b>10 (7.1 to 13.6)</b>	<b>23 (15.6 to 32.4)</b>	33.3	<5	<5	6.3 (1.7 to 16.2)	2.2 (0.3 to 6.3)	10.6	15256
Kaposi Sarcoma (M)	Pancreas	<5	<5	0.7 (0 to 4.1)	-0.2 (-0.9 to 2.8)	-	<5	<5	2.8 (0.6 to 8.2)	1.3 (-0.3 to 5)	6.1	15256
Kaposi Sarcoma (M)	Penis and Other Genital	<5	<5	33.4 (9.1 to 85.5)	2.5 (0.6 to 6.6)	3.7	0	-	-	-	-	15256
Kaposi Sarcoma (M)	Stomach	<5	<5	2.1 (0.3 to 7.6)	0.7 (-0.5 to 4.1)	1.0	<5	<5	6.8 (1.4 to 20)	1.7 (0.1 to 5.5)	8.1	15256
Kaposi Sarcoma (M)	Urinary Bladder	<5	<5	1.7 (0.5 to 4.2)	1 (-0.9 to 5.1)	1.5	<5	<5	3.5 (0.1 to 19.5)	0.5 (-0.2 to 3.5)	2.3	15256
Kidney and Renal Pelvis	Acute Lymphocytic Leukemia	<5	<5	4 (0.1 to 22.1)	0.2 (-0.1 to 1.6)	1.3	<5	<5	7.3 (0.2 to 40.7)	0.3 (0 to 1.6)	2.4	33780
Kidney and Renal Pelvis	Acute Non-Lymphocytic Leukemia	0	-	-	-	-	<5	<5	2.5 (0.3 to 9)	0.4 (-0.2 to 1.9)	3.4	33780
Kidney and Renal Pelvis	Anus	<5	<5	2.3 (0.3 to 8.5)	0.3 (-0.2 to 1.9)	2.0	0	-	-	-	-	33780
Kidney and Renal Pelvis	Bones and Joints	0	-	-	-	-	<5	<5	8.7 (0.2 to 48.2)	0.3 (0 to 1.6)	2.5	33780
Kidney and Renal Pelvis	Brain and ONS	<5	<5	1.2 (0.2 to 3.5)	0.1 (-0.6 to 1.9)	0.9	<5	<5	1.2 (0.1 to 4.2)	0.1 (-0.4 to 1.6)	0.8	33780
Kidney and Renal Pelvis	Breast (F)	31	29.3	1.1 (0.7 to 1.5)	1.1 (-5.3 to 9.6)	3.0	6	3.9	1.5 (0.6 to 3.3)	1.4 (-1.1 to 6)	5.9	15334
Kidney and Renal Pelvis	Colon and Rectum	17	13.9	1.2 (0.7 to 2)	0.9 (-1.2 to 3.9)	5.4	8	4.1	2 (0.9 to 3.9)	1.2 (-0.2 to 3.5)	11.1	33780
Kidney and Renal Pelvis	Corpus Uteri, NOS	5	5.5	0.9 (0.3 to 2.1)	-0.3 (-2.5 to 4)	-	<5	<5	1.7 (0 to 9.5)	0.3 (-0.4 to 3.3)	1.2	15334
Kidney and Renal Pelvis	Eye and Orbit	<5	<5	2.9 (0.1 to 16.3)	0.2 (-0.1 to 1.5)	1.1	0	-	-	-	-	33780
Kidney and Renal Pelvis	Hodgkin Lymphoma	<5	<5	3 (0.6 to 8.7)	0.6 (-0.1 to 2.3)	3.5	<5	<5	7.3 (0.2 to 40.4)	0.3 (0 to 1.6)	2.4	33780
Kidney and Renal Pelvis	Kaposi Sarcoma	<5	<5	1.4 (0 to 7.8)	0.1 (-0.2 to 1.4)	0.5	0	-	-	-	-	33780
Kidney and Renal Pelvis	Liver and Intrahepatic Bile Duct	<5	<5	1.3 (0.3 to 3.3)	0.3 (-0.6 to 2.1)	1.5	<5	<5	1.4 (0.3 to 4.2)	0.3 (-0.4 to 2)	2.6	33780
Kidney and Renal Pelvis	Lung and Bronchus	21	15.6	1.3 (0.8 to 2.1)	1.6 (-0.8 to 4.9)	9.3	19	11.9	1.6 (1 to 2.5)	2.1 (-0.1 to 5.3)	20.1	33780
Kidney and Renal Pelvis	Melanoma of the Skin	13	10.5	1.2 (0.7 to 2.1)	0.7 (-1.1 to 3.5)	4.3	5	0.9	<b>5.4 (1.7 to 12.6)</b>	<b>1.2 (0.2 to 3.2)</b>	11.5	33780
Kidney and Renal Pelvis	Myeloma	<5	<5	1.9 (0.5 to 4.8)	0.6 (-0.3 to 2.4)	3.3	<5	<5	2.8 (0.3 to 10.3)	0.4 (-0.1 to 1.9)	3.7	33780
Kidney and Renal Pelvis	Non-Hodgkin Lymphoma	14	8.9	1.6 (0.9 to 2.6)	1.5 (-0.4 to 4.3)	8.9	<5	<5	2.5 (0.7 to 6.4)	0.7 (-0.2 to 2.6)	6.8	33780
Kidney and Renal Pelvis	Pancreas	11	3.6	<b>3.1 (1.5 to 5.5)</b>	<b>2.2 (0.6 to 4.8)</b>	12.9	7	2.8	<b>2.5 (1 to 5.2)</b>	<b>1.3 (0 to 3.4)</b>	12.0	33780
Kidney and Renal Pelvis	Prostate	21	24.4	0.9 (0.5 to 1.3)	-1.8 (-6.2 to 4.2)	-	<5	<5	1 (0 to 5.7)	0 (-0.5 to 2.5)	0.1	18445
Kidney and Renal Pelvis	Small Intestine	<5	<5	1.1 (0 to 6.2)	0 (-0.3 to 1.4)	0.2	0	-	-	-	-	33780
Kidney and Renal Pelvis	Soft Tissue including Heart	<5	<5	2.5 (0.5 to 7.3)	0.5 (-0.2 to 2.2)	3.1	<5	<5	4.4 (0.5 to 15.9)	0.5 (-0.1 to 2)	4.4	33780
Kidney and Renal Pelvis	Stomach	<5	<5	1.4 (0.3 to 4)	0.2 (-0.5 to 1.9)	1.4	0	-	-	-	-	33780
Kidney and Renal Pelvis	Thyroid	16	6.1	<b>2.6 (1.5 to 4.3)</b>	<b>2.9 (0.9 to 5.9)</b>	17.3	0	-	-	-	-	33780
Kidney and Renal Pelvis	Urinary Bladder	11	5.8	1.9 (0.9 to 3.4)	1.5 (-0.1 to 4.1)	9.1	<5	<5	5.5 (1.5 to 14)	1 (0.1 to 2.8)	9.2	33780

First primary cancer	Subsequent primary cancer	Obs	Exp.	Standardized incidence ratio (95% CI)	Absolute excess incidence per 10,000 (95% CI)	AEI (%) <sup>a</sup>	Obs.	Exp.	Standardized mortality ratio (95% CI)	AEM (95% CI)	AE M (%) <sup>b</sup>	Person Years at Risk
Kidney and Renal Pelvis	Vagina and Vulva	<5	<5	2.5 (0.3 to 9.1)	0.8 (-0.4 to 4.2)	2.1	0	-	-	-	-	15334
Lung and Bronchus	Acute Lymphocytic Leukemia	<5	<5	6.7 (0.2 to 37.1)	0.4 (-0.1 to 2.6)	2.9	0	-	-	-	-	20821
Lung and Bronchus	Acute Non-Lymphocytic Leukemia	<5	<5	1.2 (0 to 6.9)	0.1 (-0.4 to 2.3)	0.7	<5	<5	1.9 (0 to 10.7)	0.2 (-0.2 to 2.4)	1.5	20821
Lung and Bronchus	Bones and Joints	0	-	-	-	-	<5	<5	14.1 (0.4 to 78.3)	0.4 (0 to 2.6)	2.9	20821
Lung and Bronchus	Brain and ONS	<5	<5	1.9 (0.4 to 5.7)	0.7 (-0.4 to 3.5)	5.0	<5	<5	2.8 (0.6 to 8.3)	0.9 (-0.2 to 3.7)	6.0	20821
Lung and Bronchus	Breast (F)	25	22.8	1.1 (0.7 to 1.6)	1.9 (-5.8 to 12.2)	7.4	<5	<5	1.3 (0.3 to 3.3)	0.7 (-1.8 to 6.2)	2.7	11520
Lung and Bronchus	Cervix Uteri	<5	<5	1.4 (0.2 to 5.2)	0.5 (-1 to 5.1)	2.1	<5	<5	4.4 (0.5 to 15.9)	1.3 (-0.2 to 5.9)	4.8	11520
Lung and Bronchus	Chronic Myeloid Leukemia	<5	<5	2.6 (0.1 to 14.3)	0.3 (-0.2 to 2.5)	2.1	<5	<5	25.5 (3.1 to 92.2)	0.9 (0.1 to 3.4)	6.0	20821
Lung and Bronchus	Colon and Rectum	15	8.5	1.8 (1 to 2.9)	3.1 (-0.1 to 7.8)	22.0	6	2.6	2.3 (0.9 to 5.1)	1.6 (-0.2 to 5)	10.6	20821
Lung and Bronchus	Corpus Uteri, NOS	<5	<5	0.4 (0.1 to 1.6)	-2.2 (-3.7 to 2.4)	-	<5	<5	4.2 (0.5 to 15.2)	1.3 (-0.2 to 5.9)	4.7	11520
Lung and Bronchus	Esophagus	<5	<5	3.1 (0.6 to 8.9)	1 (-0.2 to 3.7)	6.8	<5	<5	2.4 (0.3 to 8.6)	0.6 (-0.3 to 3.1)	3.6	20821
Lung and Bronchus	Gallbladder and Other Biliary	0	-	-	-	-	<5	<5	6.2 (0.2 to 34.5)	0.4 (-0.1 to 2.6)	2.6	20821
Lung and Bronchus	Head and Neck	9	4.2	2.1 (1 to 4)	2.3 (-0.1 to 6.2)	16.2	<5	<5	2.3 (0.3 to 8.1)	0.5 (-0.3 to 3)	3.4	20821
Lung and Bronchus	Kaposi Sarcoma	<5	<5	2.3 (0.1 to 12.6)	0.3 (-0.2 to 2.5)	1.9	0	-	-	-	-	20821
Lung and Bronchus	Kidney and Renal Pelvis	<5	<5	0.3 (0 to 1.5)	-1.3 (-1.7 to 0.9)	-	<5	<5	1.4 (0 to 7.8)	0.1 (-0.3 to 2.3)	0.9	20821
Lung and Bronchus	Liver and Intrahepatic Bile Duct	<5	<5	1.1 (0.1 to 4)	0.1 (-0.7 to 2.6)	0.7	<5	<5	1.6 (0.2 to 5.9)	0.4 (-0.5 to 2.9)	2.4	20821
Lung and Bronchus	Melanoma of the Skin	8	6.4	1.2 (0.5 to 2.5)	0.8 (-1.4 to 4.5)	5.3	<5	<5	1.8 (0 to 9.9)	0.2 (-0.3 to 2.4)	1.4	20821
Lung and Bronchus	Myeloma	<5	<5	0.8 (0 to 4.2)	-0.2 (-0.6 to 2)	-	<5	<5	2.1 (0.1 to 11.7)	0.3 (-0.2 to 2.4)	1.6	20821
Lung and Bronchus	Ovary	<5	<5	0.5 (0 to 2.9)	-0.8 (-1.7 to 3.1)	-	<5	<5	2.2 (0.3 to 7.9)	0.9 (-0.6 to 5.5)	3.4	11520
Lung and Bronchus	Pancreas	<5	<5	1.3 (0.3 to 3.8)	0.3 (-0.8 to 3.1)	2.4	6	1.8	<b>3.4 (1.2 to 7.3)</b>	<b>2 (0.2 to 5.4)</b>	13.0	20821
Lung and Bronchus	Small Intestine	<5	<5	3.7 (0.4 to 13.2)	0.7 (-0.1 to 3.2)	4.9	0	-	-	-	-	20821
Lung and Bronchus	Soft Tissue including Heart	<5	<5	2.8 (0.3 to 10.1)	0.6 (-0.2 to 3.1)	4.4	<5	<5	10.5 (2.2 to 30.7)	1.3 (0.2 to 4.1)	8.4	20821
Lung and Bronchus	Stomach	0	-	-	-	-	<5	<5	3.1 (0.4 to 11.3)	0.7 (-0.2 to 3.2)	4.2	20821
Lung and Bronchus	Testis	<5	<5	1.5 (0 to 8.6)	0.4 (-0.7 to 5.3)	1.2	0	-	-	-	-	9300
Lung and Bronchus	Thyroid	6	3.9	1.6 (0.6 to 3.4)	1 (-0.8 to 4.4)	7.3	<5	<5	12.8 (0.3 to 71.3)	0.4 (0 to 2.6)	2.9	20821
Lung and Bronchus	Urinary Bladder	<5	<5	1.2 (0.3 to 3)	0.3 (-1.1 to 3.3)	2.0	<5	<5	2.3 (0.1 to 12.6)	0.3 (-0.2 to 2.5)	1.7	20821
Lung and Bronchus	Vagina and Vulva	<5	<5	3.2 (0.4 to 11.4)	1.2 (-0.3 to 5.7)	4.7	0	-	-	-	-	11520
Melanoma of the Skin	Acute Non-Lymphocytic Leukemia	16	14.6	1.1 (0.6 to 1.8)	0 (-0.1 to 0.3)	1.4	12	9.3	1.3 (0.7 to 2.3)	0.1 (-0.1 to 0.3)	5.9	375984
Melanoma of the Skin	Anus	11	10.2	1.1 (0.5 to 1.9)	0 (-0.1 to 0.3)	0.8	0	-	-	-	-	375984
Melanoma of the Skin	Bones and Joints	6	3.4	1.7 (0.6 to 3.8)	0.1 (0 to 0.3)	2.6	5	1.2	<b>4.1 (1.3 to 9.5)</b>	<b>0.1 (0 to 0.3)</b>	8.2	375984
Melanoma of the Skin	Brain and ONS	28	29.2	1 (0.6 to 1.4)	0 (-0.3 to 0.3)	-	35	19.8	<b>1.8 (1.2 to 2.5)</b>	<b>0.4 (0.1 to 0.8)</b>	32.8	375984
Melanoma of the Skin	Breast (F)	368	<sup>448.</sup> <sub>2</sub>	0.8 (0.7 to 0.9)	-3.5 (-5 to -1.8)	-	60	57.3	1 (0.8 to 1.3)	0.1 (-0.5 to 0.9)	5.7	231730

First primary cancer	Subsequent primary cancer	Obs	Exp.	Standardized incidence ratio (95% CI)	Absolute excess incidence per 10,000 (95% CI)	AEI (%) <sup>a</sup>	Obs.	Exp.	Standardized mortality ratio (95% CI)	AEM (95% CI)	AE M (%) <sup>b</sup>	Person Years at Risk
Melanoma of the Skin	Breast (M)	<5	<5	2.4 (0.6 to 6.1)	0.2 (0 to 0.6)	2.3	<5	<5	3 (0.1 to 16.8)	0 (0 to 0.4)	1.4	144254
Melanoma of the Skin	Corpus Uteri, NOS	65	88.9	0.7 (0.6 to 0.9)	-1 (-1.7 to -0.3)	-	9	8.7	1 (0.5 to 2)	0 (-0.2 to 0.4)	0.6	231730
Melanoma of the Skin	Eye and Orbit	8	4.2	1.9 (0.8 to 3.7)	0.1 (0 to 0.3)	3.8	0	-	-	-	-	375984
Melanoma of the Skin	Head and Neck	63	69.1	0.9 (0.7 to 1.2)	-0.2 (-0.5 to 0.3)	-	13	12.9	1 (0.5 to 1.7)	0 (-0.2 to 0.2)	0.2	375984
Melanoma of the Skin	Hodgkin Lymphoma	15	11.0	1.4 (0.8 to 2.3)	0.1 (-0.1 to 0.4)	4.1	<5	<5	1.3 (0.2 to 4.7)	0 (0 to 0.2)	1.0	375984
Melanoma of the Skin	Mesothelioma	6	2.5	2.4 (0.9 to 5.3)	0.1 (0 to 0.3)	3.6	0	-	-	-	-	375984
Melanoma of the Skin	Myeloma	13	20.4	0.6 (0.3 to 1.1)	-0.2 (-0.4 to 0)	-	11	7.1	1.5 (0.8 to 2.8)	0.1 (0 to 0.3)	8.4	375984
Melanoma of the Skin	Non-Hodgkin Lymphoma	105	99.0	1.1 (0.9 to 1.3)	0.2 (-0.3 to 0.7)	6.1	17	17.3	1 (0.6 to 1.6)	0 (-0.2 to 0.3)	-	375984
Melanoma of the Skin	Prostate	224	205.1	1.1 (1 to 1.2)	1.3 (-0.7 to 3.5)	19.0	12	8.3	1.4 (0.7 to 2.5)	0.3 (-0.1 to 0.9)	8.0	144254
Melanoma of the Skin	Small Intestine	15	9.2	1.6 (0.9 to 2.7)	0.2 (0 to 0.4)	5.8	5	1.1	<b>4.5 (1.4 to 10.4)</b>	<b>0.1 (0 to 0.3)</b>	8.4	375984
Melanoma of the Skin	Soft Tissue including Heart	27	12.7	<b>2.1 (1.4 to 3.1)</b>	<b>0.4 (0.1 to 0.7)</b>	14.4	12	4.9	<b>2.4 (1.3 to 4.2)</b>	<b>0.2 (0 to 0.4)</b>	15.3	375984
Melanoma of the Skin	Stomach	10	20.3	0.5 (0.2 to 0.9)	-0.3 (-0.4 to -0.1)	-	10	9.1	1.1 (0.5 to 2)	0 (-0.1 to 0.2)	1.9	375984
Melanoma of the Skin	Testis	5	11.8	0.4 (0.1 to 1)	-0.5 (-0.7 to 0)	-	<5	<5	1.9 (0 to 10.4)	0 (0 to 0.3)	1.0	144254
Melanoma of the Skin	Thyroid	119	80.9	<b>1.5 (1.2 to 1.8)</b>	<b>1 (0.5 to 1.6)</b>	38.4	0	-	-	-	-	375984
Myeloma	Acute Non-Lymphocytic Leukemia	<5	<5	15.2 (1.8 to 55)	4.9 (0.3 to 18.5)	9.9	<5	<5	25 (3 to 90.3)	5 (0.4 to 18.6)	21.2	3832
Myeloma	Anus	<5	<5	10.4 (0.3 to 58.2)	2.4 (-0.2 to 14.3)	4.8	0	-	-	-	-	3832
Myeloma	Brain and ONS	<5	<5	3.9 (0.1 to 21.7)	1.9 (-0.6 to 13.9)	3.9	0	-	-	-	-	3832
Myeloma	Breast (F)	<5	<5	1.1 (0.2 to 3.1)	1 (-14.4 to 38.3)	0.8	0	-	-	-	-	1548
Myeloma	Colon and Rectum	<5	<5	1.3 (0.2 to 4.8)	1.3 (-3.3 to 14.9)	2.6	0	-	-	-	-	3832
Myeloma	Corpus Uteri, NOS	<5	<5	2 (0.1 to 11.2)	3.2 (-3.1 to 32.8)	2.6	0	-	-	-	-	1548
Myeloma	Head and Neck	<5	<5	5 (1.4 to 12.9)	8.4 (0.8 to 24.7)	16.9	<5	<5	6 (0.2 to 33.6)	2.2 (-0.4 to 14.1)	9.2	3832
Myeloma	Kaposi Sarcoma	<5	<5	11.1 (0.3 to 61.8)	2.4 (-0.2 to 14.3)	4.8	0	-	-	-	-	3832
Myeloma	Kidney and Renal Pelvis	<5	<5	2.8 (0.3 to 10.2)	3.4 (-1.2 to 17)	6.8	0	-	-	-	-	3832
Myeloma	Liver and Intrahepatic Bile Duct	0	-	-	-	-	<5	<5	4.1 (0.1 to 22.6)	2 (-0.6 to 13.9)	8.3	3832
Myeloma	Lung and Bronchus	<5	<5	1.9 (0.4 to 5.6)	3.7 (-2.5 to 18.8)	7.6	<5	<5	1.7 (0.2 to 6.1)	2.1 (-2.4 to 15.8)	9.1	3832
Myeloma	Melanoma of the Skin	0	-	-	-	-	<5	<5	11.7 (0.3 to 65.3)	2.4 (-0.2 to 14.3)	10.1	3832
Myeloma	Non-Hodgkin Lymphoma	<5	<5	1.1 (0 to 6.1)	0.2 (-2.3 to 12.1)	0.4	0	-	-	-	-	3832
Myeloma	Prostate	<5	<5	1.1 (0.2 to 3.2)	1.2 (-9.3 to 26.4)	1.4	0	-	-	-	-	2283
Myeloma	Soft Tissue including Heart	<5	<5	14.9 (1.8 to 53.8)	4.9 (0.3 to 18.5)	9.8	<5	<5	19.8 (0.5 to 110.5)	2.5 (-0.1 to 14.4)	10.5	3832
Myeloma	Thyroid	<5	<5	4.9 (1 to 14.4)	6.2 (0 to 21.3)	12.6	0	-	-	-	-	3832
Myeloma	Urinary Bladder	<5	<5	3.7 (0.4 to 13.2)	3.8 (-0.8 to 17.4)	7.7	<5	<5	13.9 (0.4 to 77.3)	2.4 (-0.1 to 14.4)	10.2	3832

First primary cancer	Subsequent primary cancer	Obs	Exp.	Standardized incidence ratio (95% CI)	Absolute excess incidence per 10,000 (95% CI)	AEI (%) <sup>a</sup>	Obs.	Exp.	Standardized mortality ratio (95% CI)	AEM (95% CI)	AE M (%) <sup>b</sup>	Person Years at Risk
Non-Hodgkin Lymphoma	Acute Lymphocytic Leukemia	<5	<5	2.2 (0.3 to 8)	0.1 (-0.1 to 0.5)	0.3	6	0.5	<b>12.4 (4.6 to 27)</b>	<b>0.5 (0.1 to 1)</b>	3.1	122395
Non-Hodgkin Lymphoma	Acute Non-Lymphocytic Leukemia	28	4.2	<b>6.7 (4.5 to 9.7)</b>	<b>1.9 (1.2 to 3)</b>	7.1	25	2.6	<b>9.8 (6.3 to 14.4)</b>	<b>1.8 (1.1 to 2.8)</b>	12.6	122395
Non-Hodgkin Lymphoma	Anus	12	2.7	<b>4.4 (2.3 to 7.8)</b>	<b>0.8 (0.3 to 1.5)</b>	2.8	<5	<5	3.4 (0.1 to 19.1)	0.1 (0 to 0.4)	0.4	122395
Non-Hodgkin Lymphoma	Bones and Joints	<5	<5	3.7 (1 to 9.5)	0.2 (0 to 0.7)	0.9	<5	<5	2.5 (0.1 to 13.9)	0 (0 to 0.4)	0.3	122395
Non-Hodgkin Lymphoma	Breast (F)	129	87.3	<b>1.5 (1.2 to 1.8)</b>	<b>8.2 (4 to 13)</b>	12.4	24	11.4	<b>2.1 (1.4 to 3.1)</b>	<b>2.5 (0.8 to 4.8)</b>	7.1	50571
Non-Hodgkin Lymphoma	Breast (M)	<5	<5	5.9 (1.6 to 15.2)	0.5 (0.1 to 1.3)	1.0	<5	<5	7.6 (0.2 to 42.4)	0.1 (0 to 0.8)	0.5	71823
Non-Hodgkin Lymphoma	Cervix Uteri	7	6.0	1.2 (0.5 to 2.4)	0.2 (-0.6 to 1.7)	0.3	0	-	-	-	-	50571
Non-Hodgkin Lymphoma	Chronic Myeloid Leukemia	<5	<5	1.9 (0.5 to 4.8)	0.2 (-0.1 to 0.7)	0.5	<5	<5	10.8 (2.9 to 27.7)	0.3 (0.1 to 0.8)	2.0	122395
Non-Hodgkin Lymphoma	Colon and Rectum	40	42.9	0.9 (0.7 to 1.3)	-0.2 (-1.2 to 0.9)	-	14	12.4	1.1 (0.6 to 1.9)	0.1 (-0.4 to 0.9)	0.9	122395
Non-Hodgkin Lymphoma	Corpus Uteri, NOS	23	16.4	1.4 (0.9 to 2.1)	1.3 (-0.4 to 3.6)	1.9	<5	<5	1.8 (0.4 to 5.3)	0.3 (-0.2 to 1.4)	0.8	50571
Non-Hodgkin Lymphoma	Esophagus	13	5.1	<b>2.5 (1.4 to 4.4)</b>	<b>0.6 (0.1 to 1.4)</b>	2.3	14	4.4	<b>3.2 (1.7 to 5.4)</b>	<b>0.8 (0.3 to 1.6)</b>	5.4	122395
Non-Hodgkin Lymphoma	Eye and Orbit	<5	<5	1.8 (0.2 to 6.4)	0.1 (-0.1 to 0.5)	0.3	0	-	-	-	-	122395
Non-Hodgkin Lymphoma	Gallbladder and Other Biliary	8	2.1	<b>3.8 (1.6 to 7.4)</b>	<b>0.5 (0.1 to 1.1)</b>	1.7	<5	<5	4.3 (0.9 to 12.6)	0.2 (0 to 0.7)	1.3	122395
Non-Hodgkin Lymphoma	Head and Neck	62	22.7	<b>2.7 (2.1 to 3.5)</b>	<b>3.2 (2 to 4.6)</b>	11.7	8	4.4	1.8 (0.8 to 3.6)	0.3 (-0.1 to 0.9)	2.0	122395
Non-Hodgkin Lymphoma	Hodgkin Lymphoma	33	3.9	<b>8.5 (5.9 to 12)</b>	<b>2.4 (1.5 to 3.5)</b>	8.7	20	0.5	<b>40.9 (25 to 63.2)</b>	<b>1.6 (1 to 2.5)</b>	11.0	122395
Non-Hodgkin Lymphoma	Kaposi Sarcoma	8	2.9	<b>2.8 (1.2 to 5.5)</b>	<b>0.4 (0 to 1.1)</b>	1.5	0	-	-	-	-	122395
Non-Hodgkin Lymphoma	Kidney and Renal Pelvis	32	19.8	<b>1.6 (1.1 to 2.3)</b>	<b>1 (0.2 to 2.1)</b>	3.6	6	3.6	1.7 (0.6 to 3.6)	0.2 (-0.1 to 0.8)	1.3	122395
Non-Hodgkin Lymphoma	Liver and Intrahepatic Bile Duct	18	9.8	<b>1.8 (1.1 to 2.9)</b>	<b>0.7 (0.1 to 1.5)</b>	2.4	22	6.5	<b>3.4 (2.1 to 5.1)</b>	<b>1.3 (0.6 to 2.2)</b>	8.7	122395
Non-Hodgkin Lymphoma	Lung and Bronchus	86	46.2	<b>1.9 (1.5 to 2.3)</b>	<b>3.3 (1.8 to 4.9)</b>	11.8	66	35.4	<b>1.9 (1.4 to 2.4)</b>	<b>2.5 (1.3 to 4)</b>	17.2	122395
Non-Hodgkin Lymphoma	Melanoma of the Skin	37	35.3	1 (0.7 to 1.4)	0.1 (-0.8 to 1.3)	0.5	<5	<5	1 (0.2 to 2.9)	0 (-0.2 to 0.5)	-	122395
Non-Hodgkin Lymphoma	Mesothelioma	<5	<5	6 (1.6 to 15.3)	0.3 (0 to 0.8)	1.0	0	-	-	-	-	122395
Non-Hodgkin Lymphoma	Pancreas	17	10.8	1.6 (0.9 to 2.5)	0.5 (-0.1 to 1.3)	1.8	20	8.4	<b>2.4 (1.5 to 3.7)</b>	<b>0.9 (0.3 to 1.8)</b>	6.5	122395
Non-Hodgkin Lymphoma	Prostate	57	73.9	0.8 (0.6 to 1)	-2.4 (-4.3 to 0)	-	<5	<5	1 (0.2 to 3)	0 (-0.3 to 0.8)	0.1	71823
Non-Hodgkin Lymphoma	Small Intestine	7	2.8	<b>2.5 (1 to 5.2)</b>	<b>0.3 (0 to 1)</b>	1.3	0	-	-	-	-	122395
Non-Hodgkin Lymphoma	Soft Tissue including Heart	5	4.0	1.3 (0.4 to 2.9)	0.1 (-0.2 to 0.6)	0.3	7	1.5	<b>4.8 (1.9 to 9.8)</b>	<b>0.5 (0.1 to 1.1)</b>	3.1	122395
Non-Hodgkin Lymphoma	Stomach	13	6.8	<b>1.9 (1 to 3.3)</b>	<b>0.5 (0 to 1.3)</b>	1.9	6	3.1	1.9 (0.7 to 4.2)	0.2 (-0.1 to 0.8)	1.6	122395
Non-Hodgkin Lymphoma	Thyroid	39	20.2	<b>1.9 (1.4 to 2.6)</b>	<b>1.5 (0.6 to 2.7)</b>	5.6	0	-	-	-	-	122395
Non-Hodgkin Lymphoma	Urinary Bladder	51	17.9	<b>2.8 (2.1 to 3.7)</b>	<b>2.7 (1.6 to 4)</b>	9.8	8	2.2	<b>3.6 (1.6 to 7.1)</b>	<b>0.5 (0.1 to 1.1)</b>	3.2	122395
Non-Hodgkin Lymphoma	Vagina and Vulva	<5	<5	1.3 (0.3 to 3.7)	0.1 (-0.3 to 1.3)	0.2	<5	<5	3.1 (0.1 to 17.1)	0.1 (-0.1 to 1)	0.4	50571
Ovary	Acute Non-Lymphocytic Leukemia	10	2.3	<b>4.3 (2.1 to 7.9)</b>	<b>1.1 (0.4 to 2.3)</b>	7.5	7	1.4	<b>4.9 (2 to 10.1)</b>	<b>0.8 (0.2 to 1.9)</b>	11.1	69792
Ovary	Bones and Joints	<5	<5	1.8 (0 to 10.2)	0.1 (-0.1 to 0.7)	0.4	<5	<5	5.7 (0.1 to 31.6)	0.1 (0 to 0.8)	1.6	69792
Ovary	Brain and ONS	5	4.1	1.2 (0.4 to 2.8)	0.1 (-0.4 to 1.1)	0.9	<5	<5	1.1 (0.2 to 3.3)	0 (-0.3 to 0.9)	0.6	69792

First primary cancer	Subsequent primary cancer	Obs	Exp.	Standardized incidence ratio (95% CI)	Absolute excess incidence per 10,000 (95% CI)	AEI (%) <sup>a</sup>	Obs.	Exp.	Standardized mortality ratio (95% CI)	AEM (95% CI)	AE M (%) <sup>b</sup>	Person Years at Risk
Ovary	Breast (F)	101	129.6	0.8 (0.6 to 0.9)	-4.1 (-6.8 to -1)	-	19	17.8	1.1 (0.6 to 1.7)	0.2 (-0.9 to 1.7)	2.4	69792
Ovary	Chronic Myeloid Leukemia	<5	<5	1 (0 to 5.5)	0 (-0.1 to 0.7)	-	<5	<5	5.3 (0.1 to 29.8)	0.1 (0 to 0.8)	1.6	69792
Ovary	Colon and Rectum	59	23.0	<b>2.6 (2 to 3.3)</b>	<b>5.2 (3.1 to 7.6)</b>	35.3	12	6.5	1.8 (0.9 to 3.2)	0.8 (0 to 2.1)	10.9	69792
Ovary	Esophagus	0	-	-	-	-	<5	<5	1.2 (0 to 6.9)	0 (-0.1 to 0.7)	0.4	69792
Ovary	Eye and Orbit	<5	<5	1.7 (0 to 9.6)	0.1 (-0.1 to 0.7)	0.4	0	-	-	-	-	69792
Ovary	Head and Neck	7	6.8	1 (0.4 to 2.1)	0 (-0.6 to 1.1)	0.2	0	-	-	-	-	69792
Ovary	Hodgkin Lymphoma	<5	<5	2.3 (0.6 to 6)	0.3 (-0.1 to 1.2)	2.2	0	-	-	-	-	69792
Ovary	Kidney and Renal Pelvis	15	7.7	<b>1.9 (1.1 to 3.2)</b>	<b>1 (0.1 to 2.4)</b>	7.1	<5	<5	3 (0.8 to 7.8)	0.4 (0 to 1.3)	5.4	69792
Ovary	Liver and Intrahepatic Bile Duct	5	2.7	1.9 (0.6 to 4.4)	0.3 (-0.1 to 1.3)	2.3	<5	<5	1.5 (0.3 to 4.4)	0.1 (-0.2 to 1)	2.0	69792
Ovary	Lung and Bronchus	34	30.3	1.1 (0.8 to 1.6)	0.5 (-1 to 2.5)	3.7	29	20.3	1.4 (1 to 2.1)	1.3 (-0.1 to 3.1)	17.4	69792
Ovary	Mesothelioma	<5	<5	3.9 (0.1 to 21.5)	0.1 (0 to 0.8)	0.7	0	-	-	-	-	69792
Ovary	Myeloma	5	3.4	1.5 (0.5 to 3.5)	0.2 (-0.3 to 1.2)	1.6	<5	<5	1.7 (0.2 to 6.2)	0.1 (-0.1 to 0.9)	1.7	69792
Ovary	Non-Hodgkin Lymphoma	12	13.9	0.9 (0.4 to 1.5)	-0.3 (-1.1 to 1)	-	<5	<5	1.3 (0.3 to 3.8)	0.1 (-0.2 to 0.9)	1.4	69792
Ovary	Pancreas	9	6.0	1.5 (0.7 to 2.8)	0.4 (-0.3 to 1.6)	2.9	12	4.6	<b>2.6 (1.4 to 4.6)</b>	<b>1.1 (0.2 to 2.3)</b>	14.8	69792
Ovary	Small Intestine	<5	<5	1.4 (0.2 to 4.9)	0.1 (-0.2 to 0.8)	0.5	<5	<5	11.1 (1.3 to 40.2)	0.3 (0 to 1)	3.6	69792
Ovary	Soft Tissue including Heart	<5	<5	2 (0.5 to 5.1)	0.3 (-0.1 to 1.2)	1.9	5	0.9	<b>5.8 (1.9 to 13.6)</b>	<b>0.6 (0.1 to 1.5)</b>	8.3	69792
Ovary	Stomach	5	2.9	1.7 (0.6 to 4)	0.3 (-0.2 to 1.3)	2.0	6	1.4	<b>4.3 (1.6 to 9.4)</b>	<b>0.7 (0.1 to 1.7)</b>	9.2	69792
Ovary	Thyroid	26	17.6	1.5 (1 to 2.2)	1.2 (-0.1 to 2.9)	8.2	0	-	-	-	-	69792
Ovary	Urinary Bladder	17	5.2	<b>3.3 (1.9 to 5.3)</b>	<b>1.7 (0.7 to 3.2)</b>	11.6	<5	<5	4.1 (0.8 to 11.9)	0.3 (0 to 1.2)	4.5	69792
Ovary	Vagina and Vulva	<5	<5	1.1 (0.3 to 2.9)	0.1 (-0.4 to 1)	0.4	<5	<5	3.8 (0.5 to 13.9)	0.2 (0 to 1)	3.0	69792
Pancreas	Acute Non-Lymphocytic Leukemia	<5	<5	9.7 (0.2 to 54.3)	2.8 (-0.2 to 16.9)	5.0	<5	<5	15.8 (0.4 to 88.2)	2.9 (-0.1 to 17.1)	11.6	3230
Pancreas	Brain and ONS	<5	<5	5.3 (0.1 to 29.3)	2.5 (-0.5 to 16.7)	4.5	0	-	-	-	-	3230
Pancreas	Breast (F)	<5	<5	1.1 (0.3 to 2.9)	2.3 (-11.8 to 32.5)	2.6	<5	<5	2 (0.1 to 11.1)	2.4 (-2.3 to 24.5)	6.2	2065
Pancreas	Colon and Rectum	<5	<5	1.8 (0.2 to 6.5)	2.7 (-2.7 to 18.9)	4.9	0	-	-	-	-	3230
Pancreas	Kidney and Renal Pelvis	<5	<5	6.8 (1.4 to 19.8)	7.9 (0.5 to 25.8)	14.2	0	-	-	-	-	3230
Pancreas	Liver and Intrahepatic Bile Duct	0	-	-	-	-	<5	<5	7.6 (0.2 to 42.4)	2.7 (-0.3 to 16.8)	10.7	3230
Pancreas	Melanoma of the Skin	<5	<5	4 (0.8 to 11.7)	7 (-0.4 to 24.8)	12.5	0	-	-	-	-	3230
Pancreas	Prostate	<5	<5	1.6 (0.2 to 5.9)	6.6 (-8.5 to 51.4)	4.2	0	-	-	-	-	1164
Pancreas	Small Intestine	<5	<5	27.8 (3.4 to 100.3)	6 (0.5 to 22.1)	10.7	0	-	-	-	-	3230
Pancreas	Soft Tissue including Heart	0	-	-	-	-	<5	<5	25.5 (0.6 to 142.1)	3 (0 to 17.1)	11.9	3230
Pancreas	Stomach	<5	<5	17.4 (3.6 to 50.8)	8.8 (1.4 to 26.6)	15.7	<5	<5	12.3 (0.3 to 68.3)	2.8 (-0.2 to 17)	11.3	3230

First primary cancer	Subsequent primary cancer	Obs	Exp.	Standardized incidence ratio (95% CI)	Absolute excess incidence per 10,000 (95% CI)	AEI (%) <sup>a</sup>	Obs.	Exp.	Standardized mortality ratio (95% CI)	AEM (95% CI)	AE M (%) <sup>b</sup>	Person Years at Risk
Pancreas	Thyroid	<5	<5	3.2 (0.4 to 11.7)	4.3 (-1.2 to 20.5)	7.7	0	-	-	-	-	3230
Pancreas	Urinary Bladder	<5	<5	5.7 (0.7 to 20.5)	5.1 (-0.3 to 21.3)	9.1	<5	<5	21.2 (0.5 to 117.9)	3 (-0.1 to 17.1)	11.8	3230
Small Intestine	Brain and ONS	<5	<5	3.3 (0.1 to 18.5)	1.6 (-0.6 to 12)	3.3	<5	<5	5 (0.1 to 28.1)	1.8 (-0.4 to 12.2)	2.6	4408
Small Intestine	Colon and Rectum	10	1.6	<b>6.2 (3 to 11.5)</b>	<b>19 (7.2 to 38.1)</b>	39.3	7	0.5	<b>15.2 (6.1 to 31.3)</b>	<b>14.8 (5.3 to 31.7)</b>	21.4	4408
Small Intestine	Corpus Uteri, NOS	<5	<5	2.6 (0.3 to 9.3)	5.6 (-2.4 to 29.6)	5.7	0	-	-	-	-	2176
Small Intestine	Kidney and Renal Pelvis	<5	<5	1.4 (0 to 7.7)	0.6 (-1.6 to 11)	1.3	0	-	-	-	-	4408
Small Intestine	Liver and Intrahepatic Bile Duct	<5	<5	3 (0.1 to 16.4)	1.5 (-0.7 to 11.9)	3.1	<5	<5	13.1 (2.7 to 38.3)	6.3 (0.9 to 19.4)	9.1	4408
Small Intestine	Ovary	<5	<5	5.9 (0.7 to 21.1)	7.6 (-0.5 to 31.6)	7.8	0	-	-	-	-	2176
Small Intestine	Pancreas	<5	<5	7.6 (1.6 to 22.1)	5.9 (0.5 to 19)	12.2	<5	<5	6.5 (0.8 to 23.6)	3.8 (-0.1 to 15.7)	5.5	4408
Small Intestine	Prostate	<5	<5	1.3 (0.3 to 3.9)	3.4 (-7.3 to 29.2)	3.5	0	-	-	-	-	2232
Small Intestine	Soft Tissue including Heart	<5	<5	6.9 (0.2 to 38.3)	1.9 (-0.3 to 12.3)	4.0	13	0.1	<b>235.2 (125.3 to 402.3)</b>	<b>29.4 (15.6 to 50.3)</b>	42.3	4408
Small Intestine	Stomach	<5	<5	8.4 (1 to 30.2)	4 (0 to 15.8)	8.3	<5	<5	27.1 (5.6 to 79.2)	6.6 (1.2 to 19.6)	9.4	4408
Small Intestine	Testis	<5	<5	5.7 (0.1 to 31.5)	3.7 (-0.7 to 24.2)	3.9	0	-	-	-	-	2232
Small Intestine	Thyroid	<5	<5	1.2 (0 to 6.9)	0.4 (-1.8 to 10.8)	0.9	0	-	-	-	-	4408
Small Intestine	Urinary Bladder	<5	<5	3.5 (0.4 to 12.8)	3.3 (-0.7 to 15.1)	6.7	0	-	-	-	-	4408
Soft Tissue including Heart	Acute Lymphocytic Leukemia	<5	<5	5.9 (0.7 to 21.2)	0.3 (0 to 1.4)	2.2	<5	<5	5.4 (0.1 to 30.1)	0.2 (0 to 1.1)	0.9	47565
Soft Tissue including Heart	Acute Non-Lymphocytic Leukemia	5	1.6	<b>3.1 (1 to 7.2)</b>	<b>0.7 (0 to 2.1)</b>	4.6	<5	<5	4 (1.1 to 10.2)	0.6 (0 to 1.9)	3.2	47565
Soft Tissue including Heart	Anus	<5	<5	3 (0.6 to 8.7)	0.4 (-0.1 to 1.6)	2.7	0	-	-	-	-	47565
Soft Tissue including Heart	Bones and Joints	<5	<5	4.9 (0.6 to 17.8)	0.3 (0 to 1.4)	2.2	25	0.2	<b>162.1 (104.9 to 239.2)</b>	<b>5.2 (3.4 to 7.7)</b>	26.6	47565
Soft Tissue including Heart	Brain and ONS	12	3.2	<b>3.8 (2 to 6.6)</b>	<b>1.9 (0.6 to 3.7)</b>	11.9	11	2.1	<b>5.3 (2.7 to 9.6)</b>	<b>1.9 (0.7 to 3.7)</b>	9.6	47565
Soft Tissue including Heart	Breast (F)	50	36.7	<b>1.4 (1 to 1.8)</b>	<b>6 (0.2 to 13.1)</b>	18.1	16	5.0	<b>3.2 (1.8 to 5.2)</b>	<b>4.9 (1.9 to 9.4)</b>	11.8	22324
Soft Tissue including Heart	Chronic Myeloid Leukemia	<5	<5	2.5 (0.3 to 8.9)	0.3 (-0.1 to 1.3)	1.6	<5	<5	6.8 (0.2 to 37.6)	0.2 (0 to 1.1)	0.9	47565
Soft Tissue including Heart	Corpus Uteri, NOS	10	7.0	1.4 (0.7 to 2.6)	1.4 (-1 to 5.1)	4.1	<5	<5	5.4 (1.5 to 13.8)	1.5 (0.2 to 4.3)	3.5	22324
Soft Tissue including Heart	Esophagus	<5	<5	0.5 (0 to 2.9)	-0.2 (-0.4 to 0.8)	-	<5	<5	1.2 (0.1 to 4.4)	0.1 (-0.3 to 1.2)	0.4	47565
Soft Tissue including Heart	Gallbladder and Other Biliary	<5	<5	2.3 (0.3 to 8.5)	0.2 (-0.1 to 1.3)	1.6	0	-	-	-	-	47565
Soft Tissue including Heart	Head and Neck	18	8.3	<b>2.2 (1.3 to 3.4)</b>	<b>2 (0.5 to 4.2)</b>	13.1	5	1.7	3 (1 to 7)	0.7 (0 to 2.1)	3.6	47565
Soft Tissue including Heart	Hodgkin Lymphoma	<5	<5	2 (0.4 to 5.8)	0.3 (-0.2 to 1.5)	2.0	<5	<5	5.2 (0.1 to 28.8)	0.2 (0 to 1.1)	0.9	47565
Soft Tissue including Heart	Kidney and Renal Pelvis	8	7.3	1.1 (0.5 to 2.1)	0.1 (-0.8 to 1.8)	0.9	0	-	-	-	-	47565
Soft Tissue including Heart	Liver and Intrahepatic Bile Duct	<5	<5	0.8 (0.2 to 2.3)	-0.2 (-0.7 to 1)	-	<5	<5	1.6 (0.4 to 4.1)	0.3 (-0.3 to 1.6)	1.6	47565
Soft Tissue including Heart	Lung and Bronchus	19	18.8	1 (0.6 to 1.6)	0 (-1.6 to 2.3)	0.3	28	14.2	<b>2 (1.3 to 2.9)</b>	<b>2.9 (0.9 to 5.5)</b>	14.8	47565

First primary cancer	Subsequent primary cancer	Obs	Exp.	Standardized incidence ratio (95% CI)	Absolute excess incidence per 10,000 (95% CI)	AEI (%) <sup>a</sup>	Obs.	Exp.	Standardized mortality ratio (95% CI)	AEM (95% CI)	AE M (%) <sup>b</sup>	Person Years at Risk
Soft Tissue including Heart	Melanoma of the Skin	16	12.8	1.2 (0.7 to 2)	0.7 (-0.8 to 2.8)	4.3	6	1.1	<b>5.5 (2 to 11.9)</b>	<b>1 (0.2 to 2.5)</b>	5.2	47565
Soft Tissue including Heart	Ovary	<5	<5	1 (0.2 to 2.8)	0 (-1.1 to 2.5)	-	<5	<5	2.2 (0.4 to 6.4)	0.7 (-0.3 to 3.3)	1.7	22324
Soft Tissue including Heart	Penis and Other Genital	<5	<5	4.7 (0.1 to 26.2)	0.3 (-0.1 to 2.1)	1.1	0	-	-	-	-	25240
Soft Tissue including Heart	Small Intestine	<5	<5	1.9 (0.2 to 6.8)	0.2 (-0.2 to 1.3)	1.3	0	-	-	-	-	47565
Soft Tissue including Heart	Stomach	7	2.6	<b>2.7 (1.1 to 5.5)</b>	<b>0.9 (0 to 2.5)</b>	5.9	<5	<5	2.5 (0.5 to 7.2)	0.4 (-0.1 to 1.6)	1.9	47565
Soft Tissue including Heart	Testis	<5	<5	1.4 (0.3 to 4.2)	0.4 (-0.6 to 2.6)	1.2	0	-	-	-	-	25240
Soft Tissue including Heart	Thyroid	15	7.8	<b>1.9 (1.1 to 3.2)</b>	<b>1.5 (0.1 to 3.6)</b>	9.8	0	-	-	-	-	47565
Soft Tissue including Heart	Urinary Bladder	9	6.7	1.3 (0.6 to 2.6)	0.5 (-0.5 to 2.2)	3.1	<5	<5	2.3 (0.3 to 8.4)	0.2 (-0.1 to 1.3)	1.2	47565
Stomach	Acute Non-Lymphocytic Leukemia	<5	<5	7.8 (0.9 to 28)	2.6 (0 to 10.2)	9.8	<5	<5	12.5 (1.5 to 45.2)	2.7 (0.1 to 10.3)	9.9	6829
Stomach	Brain and ONS	<5	<5	2.3 (0.1 to 12.6)	0.8 (-0.6 to 7.5)	3.1	0	-	-	-	-	6829
Stomach	Breast (F)	10	6.8	1.5 (0.7 to 2.7)	9.1 (-5.5 to 32.7)	18.2	<5	<5	1.1 (0 to 6)	0.2 (-2.5 to 13.1)	0.4	3554
Stomach	Colon and Rectum	7	2.9	2.4 (1 to 4.9)	6 (-0.2 to 16.8)	22.9	5	0.8	<b>6 (1.9 to 14)</b>	<b>6.1 (1.2 to 15.9)</b>	22.5	6829
Stomach	Esophagus	<5	<5	6.3 (0.8 to 22.7)	2.5 (-0.1 to 10.1)	9.5	6	0.3	<b>22.8 (8.4 to 49.6)</b>	<b>8.4 (2.8 to 18.7)</b>	31.0	6829
Stomach	Head and Neck	<5	<5	1.5 (0.2 to 5.3)	0.9 (-1.7 to 8.6)	3.5	<5	<5	3.4 (0.1 to 18.9)	1 (-0.4 to 7.7)	3.8	6829
Stomach	Liver and Intrahepatic Bile Duct	<5	<5	2.7 (0.3 to 9.9)	1.9 (-0.7 to 9.5)	7.2	<5	<5	2.1 (0.1 to 11.9)	0.8 (-0.6 to 7.5)	2.9	6829
Stomach	Lung and Bronchus	<5	<5	1.2 (0.3 to 3.1)	1 (-3.3 to 10.1)	3.9	<5	<5	1.7 (0.5 to 4.3)	2.4 (-1.9 to 11.5)	8.8	6829
Stomach	Melanoma of the Skin	<5	<5	1.3 (0.2 to 4.6)	0.6 (-2 to 8.3)	2.3	0	-	-	-	-	6829
Stomach	Pancreas	<5	<5	1.3 (0 to 7.5)	0.4 (-1 to 7.1)	1.5	0	-	-	-	-	6829
Stomach	Prostate	5	4.5	1.1 (0.4 to 2.6)	1.4 (-8.9 to 21.8)	2.6	0	-	-	-	-	3275
Stomach	Soft Tissue including Heart	<5	<5	4.2 (0.1 to 23.5)	1.1 (-0.3 to 7.8)	4.3	<5	<5	33 (6.8 to 96.4)	4.3 (0.8 to 12.7)	15.7	6829
Testis	Acute Lymphocytic Leukemia	<5	<5	1.4 (0.3 to 4)	0 (-0.1 to 0.2)	0.3	<5	<5	1.7 (0.2 to 6)	0 (0 to 0.2)	0.4	263825
Testis	Acute Non-Lymphocytic Leukemia	21	9.6	<b>2.2 (1.4 to 3.3)</b>	<b>0.4 (0.1 to 0.9)</b>	4.1	22	6.1	<b>3.6 (2.3 to 5.5)</b>	<b>0.6 (0.3 to 1)</b>	7.5	263825
Testis	Anus	<5	<5	0.8 (0.2 to 2.1)	0 (-0.1 to 0.2)	-	<5	<5	3.6 (0.4 to 13.1)	0.1 (0 to 0.3)	0.7	263825
Testis	Breast (M)	<5	<5	1.3 (0.3 to 3.8)	0 (-0.1 to 0.2)	0.2	0	-	-	-	-	263825
Testis	Chronic Myeloid Leukemia	12	5.3	<b>2.3 (1.2 to 4)</b>	<b>0.3 (0 to 0.6)</b>	2.4	<5	<5	2.2 (0.3 to 8)	0 (0 to 0.2)	0.5	263825
Testis	Colon and Rectum	120	98.4	<b>1.2 (1 to 1.5)</b>	<b>0.8 (0 to 1.7)</b>	7.8	44	29.1	<b>1.5 (1.1 to 2)</b>	<b>0.6 (0.1 to 1.1)</b>	7.0	263825
Testis	Esophagus	22	16.4	1.3 (0.8 to 2)	0.2 (-0.1 to 0.6)	2.0	26	14.6	<b>1.8 (1.2 to 2.6)</b>	<b>0.4 (0.1 to 0.9)</b>	5.4	263825
Testis	Eye and Orbit	<5	<5	1.4 (0.4 to 3.6)	0 (-0.1 to 0.3)	0.4	<5	<5	9.4 (1.1 to 34)	0.1 (0 to 0.3)	0.8	263825
Testis	Gallbladder and Other Biliary	8	4.4	1.8 (0.8 to 3.6)	0.1 (0 to 0.4)	1.3	6	1.3	<b>4.7 (1.7 to 10.3)</b>	<b>0.2 (0 to 0.4)</b>	2.2	263825
Testis	Kidney and Renal Pelvis	91	52.9	<b>1.7 (1.4 to 2.1)</b>	<b>1.4 (0.8 to 2.2)</b>	13.8	31	10.4	<b>3 (2 to 4.2)</b>	<b>0.8 (0.4 to 1.3)</b>	9.7	263825
Testis	Liver and Intrahepatic Bile Duct	24	29.2	0.8 (0.5 to 1.2)	-0.2 (-0.5 to 0.2)	-	32	19.0	<b>1.7 (1.2 to 2.4)</b>	<b>0.5 (0.1 to 1)</b>	6.1	263825

First primary cancer	Subsequent primary cancer	Obs	Exp.	Standardized incidence ratio (95% CI)	Absolute excess incidence per 10,000 (95% CI)	AEI (%) <sup>a</sup>	Obs.	Exp.	Standardized mortality ratio (95% CI)	AEM (95% CI)	AE M (%) <sup>b</sup>	Person Years at Risk
Testis	Lung and Bronchus	109	100.4	1.1 (0.9 to 1.3)	0.3 (-0.4 to 1.2)	3.1	101	84.0	1.2 (1 to 1.5)	0.6 (-0.1 to 1.5)	8.0	263825
Testis	Melanoma of the Skin	83	88.5	0.9 (0.7 to 1.2)	-0.2 (-0.8 to 0.5)	-	10	8.9	1.1 (0.5 to 2.1)	0 (-0.2 to 0.4)	0.5	263825
Testis	Mesothelioma	<5	<5	1.6 (0.3 to 4.8)	0 (0 to 0.3)	0.4	0	-	-	-	-	263825
Testis	Myeloma	20	14.5	1.4 (0.8 to 2.1)	0.2 (-0.1 to 0.6)	2.0	5	4.8	1 (0.3 to 2.4)	0 (-0.1 to 0.3)	0.1	263825
Testis	Non-Hodgkin Lymphoma	70	73.0	1 (0.7 to 1.2)	-0.1 (-0.7 to 0.6)	-	15	13.1	1.1 (0.6 to 1.9)	0.1 (-0.2 to 0.4)	0.9	263825
Testis	Pancreas	75	26.0	<b>2.9 (2.3 to 3.6)</b>	<b>1.9 (1.3 to 2.6)</b>	17.8	74	20.7	<b>3.6 (2.8 to 4.5)</b>	<b>2 (1.4 to 2.7)</b>	25.1	263825
Testis	Penis and Other Genital	6	2.1	<b>2.8 (1 to 6.1)</b>	<b>0.1 (0 to 0.4)</b>	1.4	<5	<5	2.8 (0.1 to 15.4)	0 (0 to 0.2)	0.3	263825
Testis	Prostate	248	265.5	0.9 (0.8 to 1.1)	-0.7 (-1.8 to 0.6)	-	21	9.8	<b>2.1 (1.3 to 3.3)</b>	<b>0.4 (0.1 to 0.8)</b>	5.3	263825
Testis	Small Intestine	9	6.3	1.4 (0.7 to 2.7)	0.1 (-0.1 to 0.4)	1.0	<5	<5	2.5 (0.3 to 9.2)	0 (0 to 0.2)	0.6	263825
Testis	Soft Tissue including Heart	22	9.4	<b>2.4 (1.5 to 3.6)</b>	<b>0.5 (0.2 to 0.9)</b>	4.6	10	3.3	<b>3.1 (1.5 to 5.6)</b>	<b>0.3 (0.1 to 0.6)</b>	3.2	263825
Testis	Stomach	32	16.9	<b>1.9 (1.3 to 2.7)</b>	<b>0.6 (0.2 to 1.1)</b>	5.5	24	7.4	<b>3.2 (2.1 to 4.8)</b>	<b>0.6 (0.3 to 1.1)</b>	7.8	263825
Testis	Thyroid	44	24.4	<b>1.8 (1.3 to 2.4)</b>	<b>0.7 (0.3 to 1.3)</b>	7.1	<5	<5	3.5 (0.7 to 10.2)	0.1 (0 to 0.3)	1.0	263825
Testis	Urinary Bladder	112	55.7	<b>2 (1.7 to 2.4)</b>	<b>2.1 (1.4 to 3)</b>	20.4	17	6.6	<b>2.6 (1.5 to 4.1)</b>	<b>0.4 (0.1 to 0.8)</b>	4.9	263825
Thyroid	Acute Non-Lymphocytic Leukemia	11	11.5	1 (0.5 to 1.7)	0 (-0.2 to 0.2)	-	10	6.9	1.4 (0.7 to 2.7)	0.1 (-0.1 to 0.3)	6.4	336131
Thyroid	Anus	10	8.3	1.2 (0.6 to 2.2)	0.1 (-0.1 to 0.3)	1.3	<5	<5	2.2 (0.3 to 8)	0 (0 to 0.2)	2.3	336131
Thyroid	Bones and Joints	7	2.7	<b>2.6 (1 to 5.3)</b>	<b>0.1 (0 to 0.3)</b>	3.1	<5	<5	3.3 (0.7 to 9.5)	0.1 (0 to 0.2)	4.3	336131
Thyroid	Brain and ONS	25	21.3	1.2 (0.8 to 1.7)	0.1 (-0.2 to 0.5)	2.7	23	13.8	<b>1.7 (1.1 to 2.5)</b>	<b>0.3 (0 to 0.6)</b>	19.1	336131
Thyroid	Breast (F)	521	478.5	1.1 (1 to 1.2)	1.6 (0 to 3.3)	31.0	68	60.5	1.1 (0.9 to 1.4)	0.3 (-0.3 to 0.9)	15.5	270379
Thyroid	Chronic Myeloid Leukemia	9	5.3	1.7 (0.8 to 3.2)	0.1 (0 to 0.4)	2.7	0	-	-	-	-	336131
Thyroid	Eye and Orbit	<5	<5	0.7 (0.1 to 2.4)	0 (-0.1 to 0.1)	-	<5	<5	8.9 (1.1 to 32)	0.1 (0 to 0.2)	3.7	336131
Thyroid	Head and Neck	59	44.0	<b>1.3 (1 to 1.7)</b>	<b>0.4 (0 to 1)</b>	11.0	7	8.0	0.9 (0.4 to 1.8)	0 (-0.2 to 0.2)	-	336131
Thyroid	Kidney and Renal Pelvis	75	43.8	<b>1.7 (1.3 to 2.1)</b>	<b>0.9 (0.5 to 1.5)</b>	22.8	8	7.6	1 (0.5 to 2.1)	0 (-0.1 to 0.2)	0.8	336131
Thyroid	Liver and Intrahepatic Bile Duct	14	18.5	0.8 (0.4 to 1.3)	-0.1 (-0.3 to 0.1)	-	13	12.9	1 (0.5 to 1.7)	0 (-0.2 to 0.3)	0.1	336131
Thyroid	Mesothelioma	<5	<5	1.9 (0.4 to 5.6)	0 (0 to 0.2)	1.0	0	-	-	-	-	336131
Thyroid	Myeloma	12	15.9	0.8 (0.4 to 1.3)	-0.1 (-0.3 to 0.2)	-	7	5.3	1.3 (0.5 to 2.7)	0.1 (-0.1 to 0.3)	3.6	336131
Thyroid	Non-Hodgkin Lymphoma	83	70.8	1.2 (0.9 to 1.5)	0.4 (-0.1 to 1)	8.9	18	11.7	1.5 (0.9 to 2.4)	0.2 (0 to 0.5)	13.0	336131
Thyroid	Ovary	26	40.3	0.6 (0.4 to 0.9)	-0.5 (-0.9 to -0.1)	-	20	17.8	1.1 (0.7 to 1.7)	0.1 (-0.2 to 0.5)	4.6	270379
Thyroid	Pancreas	29	28.8	1 (0.7 to 1.4)	0 (-0.3 to 0.4)	0.1	19	21.9	0.9 (0.5 to 1.4)	-0.1 (-0.3 to 0.2)	-	336131
Thyroid	Prostate	96	88.7	1.1 (0.9 to 1.3)	1.1 (-1.7 to 4.3)	5.3	<5	<5	0.3 (0 to 1.5)	-0.4 (-0.6 to 0.3)	-	65751
Thyroid	Small Intestine	6	7.2	0.8 (0.3 to 1.8)	0 (-0.1 to 0.2)	-	<5	<5	1.2 (0 to 6.6)	0 (0 to 0.1)	0.3	336131
Thyroid	Soft Tissue including Heart	14	10.2	1.4 (0.8 to 2.3)	0.1 (-0.1 to 0.4)	2.8	11	4.0	<b>2.8 (1.4 to 5)</b>	<b>0.2 (0 to 0.5)</b>	14.6	336131



First primary cancer	Subsequent primary cancer	Obs	Exp.	Standardized incidence ratio (95% CI)	Absolute excess incidence per 10,000 (95% CI)	AEI (%) <sup>a</sup>	Obs.	Exp.	Standardized mortality ratio (95% CI)	AEM (95% CI)	AE M (%) <sup>b</sup>	Person Years at Risk
Thyroid	Stomach	26	16.0	<b>1.6 (1.1 to 2.4)</b>	<b>0.3 (0 to 0.7)</b>	7.3	9	7.4	1.2 (0.6 to 2.3)	0 (-0.1 to 0.3)	3.4	336131
Thyroid	Urinary Bladder	20	35.6	0.6 (0.3 to 0.9)	-0.5 (-0.7 to -0.1)	-	6	4.7	1.3 (0.5 to 2.8)	0 (-0.1 to 0.2)	2.8	336131
Urinary Bladder	Acute Lymphocytic Leukemia	<5	<5	2.4 (0.1 to 13.2)	0.1 (-0.1 to 1)	1.1	0	-	-	-	-	50379
Urinary Bladder	Anus	<5	<5	1.5 (0.2 to 5.4)	0.1 (-0.2 to 1.2)	1.2	0	-	-	-	-	50379
Urinary Bladder	Breast (F)	29	28.2	1 (0.7 to 1.5)	0.6 (-6.7 to 10.3)	1.5	<5	<5	1 (0.3 to 2.6)	0.1 (-2.1 to 4.8)	0.4	13136
Urinary Bladder	Breast (M)	<5	<5	1.9 (0 to 10.3)	0.1 (-0.1 to 1.4)	0.8	<5	<5	9.2 (0.2 to 51.5)	0.2 (0 to 1.5)	2.8	37243
Urinary Bladder	Chronic Myeloid Leukemia	<5	<5	3.4 (0.9 to 8.7)	0.6 (0 to 1.8)	5.2	<5	<5	4.2 (0.1 to 23.7)	0.2 (0 to 1.1)	2.4	50379
Urinary Bladder	Colon and Rectum	26	25.6	1 (0.7 to 1.5)	0.1 (-1.7 to 2.5)	0.7	7	8.1	0.9 (0.3 to 1.8)	-0.2 (-1 to 1.3)	-	50379
Urinary Bladder	Corpus Uteri, NOS	6	5.7	1 (0.4 to 2.3)	0.2 (-2.7 to 5.6)	0.5	0	-	-	-	-	13136
Urinary Bladder	Gallbladder and Other Biliary	<5	<5	0.7 (0 to 4.1)	-0.1 (-0.3 to 0.8)	-	<5	<5	2.3 (0.1 to 12.6)	0.1 (-0.1 to 1)	1.7	50379
Urinary Bladder	Hodgkin Lymphoma	<5	<5	0.6 (0 to 3.4)	-0.1 (-0.3 to 0.8)	-	<5	<5	3.6 (0.1 to 20.1)	0.1 (0 to 1.1)	2.2	50379
Urinary Bladder	Kidney and Renal Pelvis	37	12.4	<b>3 (2.1 to 4.1)</b>	<b>4.9 (2.7 to 7.7)</b>	45.0	9	2.7	<b>3.3 (1.5 to 6.3)</b>	<b>1.2 (0.3 to 2.9)</b>	19.4	50379
Urinary Bladder	Lung and Bronchus	56	33.6	<b>1.7 (1.3 to 2.2)</b>	<b>4.4 (1.7 to 7.8)</b>	41.1	45	27.0	<b>1.7 (1.2 to 2.2)</b>	<b>3.6 (1.2 to 6.6)</b>	55.7	50379
Urinary Bladder	Melanoma of the Skin	19	20.7	0.9 (0.6 to 1.4)	-0.3 (-1.8 to 1.8)	-	<5	<5	1.9 (0.5 to 4.9)	0.4 (-0.2 to 1.6)	5.9	50379
Urinary Bladder	Prostate	47	68.2	0.7 (0.5 to 0.9)	-5.7 (-9.1 to -1.5)	-	5	3.1	1.6 (0.5 to 3.8)	0.5 (-0.4 to 2.3)	5.9	37243
Urinary Bladder	Soft Tissue including Heart	<5	<5	0.5 (0 to 2.7)	-0.2 (-0.4 to 0.7)	-	<5	<5	1.2 (0 to 6.9)	0 (-0.2 to 0.9)	0.6	50379
Urinary Bladder	Stomach	5	4.4	1.1 (0.4 to 2.7)	0.1 (-0.5 to 1.4)	1.1	<5	<5	1.5 (0.3 to 4.4)	0.2 (-0.3 to 1.3)	3.2	50379
Urinary Bladder	Testis	<5	<5	0.4 (0 to 2.2)	-0.4 (-0.7 to 0.8)	-	<5	<5	7.9 (0.2 to 44)	0.2 (0 to 1.5)	2.7	37243
Urinary Bladder	Vagina and Vulva	<5	<5	1.3 (0 to 7)	0.2 (-0.6 to 3.6)	0.4	0	-	-	-	-	13136
Vagina and Vulva	Acute Non-Lymphocytic Leukemia	<5	<5	3.1 (0.4 to 11.4)	0.7 (-0.2 to 3.4)	5.3	<5	<5	2.6 (0.1 to 14.5)	0.3 (-0.2 to 2.7)	1.7	19471
Vagina and Vulva	Anus	<5	<5	3.7 (0.5 to 13.5)	0.8 (-0.1 to 3.4)	5.7	0	-	-	-	-	19471
Vagina and Vulva	Bones and Joints	0	-	-	-	-	<5	<5	20.6 (0.5 to 115.1)	0.5 (0 to 2.8)	2.6	19471
Vagina and Vulva	Brain and ONS	<5	<5	0.9 (0 to 5)	-0.1 (-0.6 to 2.3)	-	<5	<5	1.4 (0 to 7.6)	0.1 (-0.4 to 2.5)	0.7	19471
Vagina and Vulva	Breast (F)	31	36.0	0.9 (0.6 to 1.2)	-2.5 (-7.6 to 4.1)	-	10	5.0	2 (1 to 3.7)	2.6 (-0.1 to 6.9)	13.8	19471
Vagina and Vulva	Cervix Uteri	<5	<5	0.4 (0 to 2.4)	-0.7 (-1.2 to 1.7)	-	6	0.7	<b>8 (2.9 to 17.5)</b>	<b>2.7 (0.7 to 6.3)</b>	14.5	19471
Vagina and Vulva	Colon and Rectum	9	6.4	1.4 (0.6 to 2.7)	1.4 (-1.1 to 5.5)	10.2	<5	<5	1.7 (0.3 to 4.9)	0.6 (-0.6 to 3.6)	3.3	19471
Vagina and Vulva	Corpus Uteri, NOS	6	7.1	0.8 (0.3 to 1.8)	-0.5 (-2.5 to 3.1)	-	<5	<5	2.7 (0.3 to 9.6)	0.6 (-0.3 to 3.3)	3.4	19471
Vagina and Vulva	Gallbladder and Other Biliary	0	-	-	-	-	<5	<5	6.4 (0.2 to 35.6)	0.4 (-0.1 to 2.8)	2.3	19471
Vagina and Vulva	Head and Neck	<5	<5	2.1 (0.6 to 5.5)	1.1 (-0.4 to 4.3)	8.2	0	-	-	-	-	19471
Vagina and Vulva	Kidney and Renal Pelvis	<5	<5	1.9 (0.5 to 4.8)	1 (-0.5 to 4.2)	7.2	<5	<5	2.8 (0.1 to 15.8)	0.3 (-0.2 to 2.7)	1.8	19471
Vagina and Vulva	Liver and Intrahepatic Bile Duct	<5	<5	1.3 (0 to 7.4)	0.1 (-0.4 to 2.5)	0.9	<5	<5	1.8 (0 to 10)	0.2 (-0.3 to 2.6)	1.2	19471
Vagina and Vulva	Lung and Bronchus	18	8.1	<b>2.2 (1.3 to 3.5)</b>	<b>5.1 (1.3 to 10.4)</b>	38.2	16	5.4	<b>3 (1.7 to 4.8)</b>	<b>5.4 (1.9 to 10.6)</b>	29.2	19471
Vagina and Vulva	Melanoma of the Skin	<5	<5	0.8 (0.2 to 2)	-0.6 (-2.1 to 2.6)	-	<5	<5	11.7 (3.2 to 30)	1.9 (0.4 to 5.1)	10.1	19471
Vagina and Vulva	Myeloma	<5	<5	1.1 (0 to 5.9)	0 (-0.5 to 2.4)	0.2	0	-	-	-	-	19471
Vagina and Vulva	Ovary	<5	<5	0.3 (0 to 1.8)	-1.1 (-1.6 to 1.3)	-	<5	<5	2.1 (0.4 to 6.3)	0.8 (-0.4 to 3.8)	4.4	19471
Vagina and Vulva	Soft Tissue including Heart	<5	<5	5.3 (1.1 to 15.5)	1.3 (0 to 4.2)	9.4	<5	<5	8.3 (1 to 30)	0.9 (0 to 3.6)	4.9	19471
Vagina and Vulva	Stomach	<5	<5	1.2 (0 to 6.8)	0.1 (-0.4 to 2.4)	0.7	<5	<5	2.6 (0.1 to 14.5)	0.3 (-0.2 to 2.7)	1.7	19471
Vagina and Vulva	Urinary Bladder	<5	<5	0.7 (0 to 4.1)	-0.2 (-0.7 to 2.2)	-	<5	<5	5.1 (0.1 to 28.3)	0.4 (-0.1 to 2.8)	2.2	19471

<sup>a</sup>For a given first AYA cancer, denominator for the percentage calculation is the sum of higher-than-expected AElS (>0) of each type of SPC and remaining SPCs in this table.

<sup>b</sup>For a given first AYA cancer, denominator for the percentage calculation is the sum of higher-than-expected AEMs (>0) for each type of SPC and remaining SPCs not shown in this table.

Supplementary Table 4. Associations between first course receipt of treatment and the risk of developing subsequent primary cancer

FPC	Radiotherapy, No/Unknown; Chemotherapy, No/Unknown			Radiotherapy, Yes; Chemotherapy, No/Unknown			Radiotherapy, No/Unknown; Chemotherapy, Yes			Radiotherapy, Yes; Chemotherapy, Yes			P
	Persons	Observed	SIR (95% CI)	Persons	Observed	SIR (95% CI)	Persons	Observed	SIR (95% CI)	Persons	Observed	SIR (95% CI)	
<b>Breast (F)</b>													
Thyroid	10,277	326	1.03 (0.92 to 1.15)	8,741	194	1.21 (1.04 to 1.39)	23	<5	0.95 (0.02 to 5.27)	36	<5	0 (0 to 3.53)	0.14
Cervix Uteri	8,003	226	0.73 (0.63 to 0.83)	1,343	40	0.62 (0.44 to 0.84)	97	<5	0.47 (0.01 to 2.64)	871	13	1.01 (0.54 to 1.72)	0.66
Corpus Uteri, NOS	2,819	58	0.64 (0.48 to 0.82)	526	17	0.69 (0.4 to 1.11)	167	<5	0.81 (0.17 to 2.37)	96	<5	0 (0 to 2.64)	0.57
Ovary	2,077	53	0.71 (0.53 to 0.92)	174	5	0.59 (0.19 to 1.37)	1,744	40	0.93 (0.66 to 1.26)	71	<5	1.1 (0.23 to 3.22)	0.64
Colon and Rectum	1,766	75	1.22 (0.96 to 1.53)	77	<5	0.26 (0.01 to 1.48)	695	17	1.23 (0.71 to 1.96)	368	6	0.87 (0.32 to 1.9)	0.21
Head and Neck	1,145	25	0.7 (0.46 to 1.04)	670	24	1.21 (0.77 to 1.8)	11	<5	3.27 (0.08 to 18.21)	266	<5	0.78 (0.16 to 2.29)	0.20
Non-Hodgkin Lymphoma	955	21	1.03 (0.64 to 1.57)	331	16	1.45 (0.83 to 2.36)	1,687	54	1.47 (1.1 to 1.92)	875	38	1.98 (1.4 to 2.72)	0.31
Hodgkin Lymphoma (F)	637	37	2.43 (1.71 to 3.35)	1,707	253	4.27 (3.76 to 4.83)	2,165	67	1.96 (1.52 to 2.5)	2,041	109	3.52 (2.89 to 4.25)	3.0E-07
Bones and Joints	428	14	1.23 (0.67 to 2.07)	53	<5	0.78 (0.02 to 4.35)	255	13	3.4 (1.81 to 5.81)	75	3	3.32 (0.69 to 9.71)	0.14
<b>Colon and Rectum</b>													
Breast (F)	8,149	61	0.85 (0.65 to 1.09)	3,228	26	1.1 (0.72 to 1.6)	7,048	36	1.14 (0.8 to 1.58)	8,751	26	0.9 (0.59 to 1.32)	0.45
Cervix Uteri	8,003	53	0.94 (0.7 to 1.23)	1,343	42	3.33 (2.4 to 4.5)	97	<5	8.44 (1.74 to 24.66)	871	9	4.27 (1.95 to 8.11)	1.2E-10
Testis	6,407	32	0.95 (0.65 to 1.35)	5,537	53	1.2 (0.9 to 1.57)	4,376	30	1.57 (1.06 to 2.24)	181	5	3.25 (1.05 to 7.58)	0.06
Brain and ONS	2,894	9	1.1 (0.5 to 2.09)	2,189	6	0.86 (0.31 to 1.86)	198	<5	0 (0 to 12.75)	1,218	<5	1.23 (0.25 to 3.59)	0.84
Corpus Uteri, NOS	2,819	32	1.91 (1.31 to 2.7)	526	28	5.86 (3.89 to 8.47)	167	5	7.44 (2.42 to 17.36)	96	<5	16.41 (4.47 to 42.02)	1.9E-06
Head and Neck	2,412	15	0.85 (0.48 to 1.41)	1,466	<5	0.41 (0.11 to 1.06)	42	<5	0 (0 to 19.63)	763	<5	0.45 (0.01 to 2.53)	0.48
Non-Hodgkin Lymphoma	2,240	6	0.59 (0.22 to 1.28)	795	6	1.11 (0.41 to 2.42)	4,395	20	1.08 (0.66 to 1.67)	2,044	8	0.91 (0.39 to 1.8)	0.50
Ovary	2,077	26	1.93 (1.26 to 2.82)	174	5	3.21 (1.04 to 7.49)	1,744	26	3.5 (2.28 to 5.12)	71	<5	4.04 (0.49 to 14.61)	0.19
Hodgkin Lymphoma (M)	708	<5	0.51 (0.06 to 1.84)	1,621	17	1.44 (0.84 to 2.31)	2,597	22	2.25 (1.41 to 3.4)	1,928	10	1.57 (0.75 to 2.9)	0.07
Hodgkin Lymphoma (F)	637	7	2.81 (1.13 to 5.79)	1,707	21	2.22 (1.37 to 3.39)	2,165	8	1.44 (0.62 to 2.84)	2,041	12	2.43 (1.26 to 4.25)	0.55
<b>Head and Neck</b>													
Breast (F)	8,149	24	1.18 (0.76 to 1.76)	3,228	7	1.02 (0.41 to 2.1)	7,048	20	2.18 (1.33 to 3.37)	8,751	19	2.3 (1.39 to 3.59)	0.07
Testis	6,407	17	0.74 (0.43 to 1.18)	5,537	19	0.62 (0.38 to 0.98)	4,376	15	1.15 (0.65 to 1.9)	181	<5	2.88 (0.59 to 8.43)	0.12
Brain and ONS	2,894	<5	0.98 (0.27 to 2.52)	2,189	13	3.47 (1.85 to 5.94)	198	<5	0 (0 to 25.15)	1,218	<5	3.28 (0.89 to 8.39)	0.11
Non-Hodgkin Lymphoma	2,240	16	3.02 (1.73 to 4.91)	795	8	2.85 (1.23 to 5.61)	4,395	24	2.4 (1.54 to 3.58)	2,044	14	3.05 (1.67 to 5.13)	0.89
Hodgkin Lymphoma (M)	708	8	2.99 (1.29 to 5.9)	1,621	17	2.06 (1.2 to 3.31)	2,597	7	1.07 (0.43 to 2.21)	1,928	9	2.2 (1.01 to 4.18)	0.20
Hodgkin Lymphoma (F)	637	<5	4 (0.82 to 11.68)	1,707	19	6.46 (3.89 to 10.09)	2,165	7	4.23 (1.7 to 8.72)	2,041	8	5.42 (2.34 to 10.69)	0.62
<b>Lung and Bronchus</b>													
Breast (F)	8,149	122	1.11 (0.92 to 1.33)	3,228	64	1.9 (1.46 to 2.42)	7,048	45	1.12 (0.82 to 1.5)	8,751	62	2.04 (1.57 to 2.62)	2.1E-04
Cervix Uteri	8,003	99	1.3 (1.06 to 1.58)	1,343	28	1.51 (1.01 to 2.19)	97	<5	5.53 (0.67 to 19.99)	871	6	3.2 (1.17 to 6.97)	0.14
Testis	6,407	19	0.58 (0.35 to 0.91)	5,537	51	1.05 (0.78 to 1.39)	4,376	35	2.01 (1.4 to 2.8)	181	<5	2.13 (0.58 to 5.44)	7.9E-05
Colon and Rectum	3,461	32	0.98 (0.67 to 1.38)	180	<5	1.12 (0.23 to 3.26)	1,370	<5	0.51 (0.11 to 1.5)	832	<5	1.75 (0.48 to 4.49)	0.43
Brain and ONS	2,894	14	1.82 (1 to 3.06)	2,189	5	0.72 (0.23 to 1.68)	198	<5	0 (0 to 18.57)	1,218	<5	1.95 (0.53 to 4.99)	0.25
Non-Hodgkin Lymphoma	2,240	18	1.67 (0.99 to 2.63)	795	15	2.26 (1.26 to 3.72)	4,395	35	1.75 (1.22 to 2.43)	2,044	18	2.06 (1.22 to 3.25)	0.78
Hodgkin Lymphoma (M)	708	18	4.6 (2.72 to 7.26)	1,621	72	5.62 (4.4 to 7.08)	2,597	25	2.83 (1.83 to 4.17)	1,928	30	5.6 (3.78 to 8)	0.01
Hodgkin Lymphoma (F)	637	10	3.65 (1.75 to 6.71)	1,707	55	4.86 (3.66 to 6.32)	2,165	18	3.39 (2.01 to 5.36)	2,041	20	4.46 (2.72 to 6.88)	0.73
<b>Thyroid</b>													
Breast (F)	8,149	37	1.04 (0.73 to 1.44)	3,228	10	0.74 (0.35 to 1.36)	7,048	26	1.11 (0.73 to 1.63)	8,751	38	1.42 (1.01 to 1.95)	0.32
Testis	6,407	10	1.13 (0.54 to 2.07)	5,537	18	1.84 (1.09 to 2.9)	4,376	15	2.76 (1.55 to 4.55)	181	<5	3.22 (0.08 to 17.92)	0.15
Colon and Rectum	3,461	12	1.29 (0.66 to 2.25)	180	<5	1.93 (0.05 to 10.77)	1,370	5	1.77 (0.58 to 4.14)	832	<5	0.66 (0.02 to 3.67)	0.78
Brain and ONS	2,894	7	1.2 (0.48 to 2.48)	2,189	16	3.86 (2.21 to 6.27)	198	<5	0 (0 to 15.8)	1,218	<5	1.16 (0.14 to 4.17)	0.03
Head and Neck	2,412	12	1.74 (0.9 to 3.04)	1,466	8	2.14 (0.92 to 4.21)	42	<5	0 (0 to 49.02)	763	<5	0.91 (0.02 to 5.09)	0.71
Non-Hodgkin Lymphoma	2,240	<5	0.65 (0.13 to 1.9)	795	<5	1.93 (0.53 to 4.94)	4,395	17	1.96 (1.14 to 3.13)	2,044	15	3.14 (1.76 to 5.18)	0.06

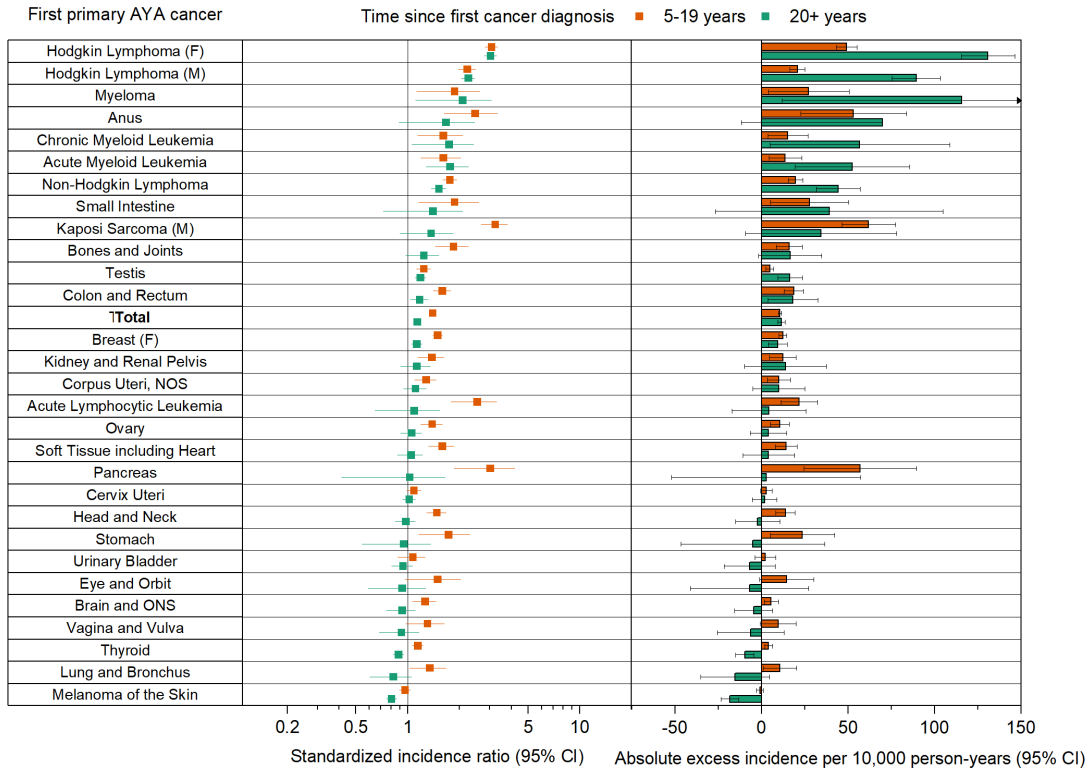
Ovary	2,077	13	1.32 (0.71 to 2.27)	174	5	5.23 (1.7 to 12.2)	1,744	6	0.91 (0.33 to 1.99)	71	<5	7.31 (0.89 to 26.41)	0.01
Hodgkin Lymphoma (M)	708	<5	3.11 (0.64 to 9.07)	1,621	14	5.17 (2.82 to 8.67)	2,597	<5	1.1 (0.23 to 3.21)	1,928	9	4.65 (2.12 to 8.82)	0.06
Hodgkin Lymphoma (F)	637	11	3.95 (1.97 to 7.06)	1,707	42	4.48 (3.23 to 6.05)	2,165	26	3.53 (2.31 to 5.17)	2,041	24	3.34 (2.14 to 4.97)	0.91
Cervix Uteri	8,003	20	1.22 (0.75 to 1.89)	1,343	7	1.96 (0.79 to 4.04)	97	<5	0 (0 to 35.7)	871	1	1.7 (0.04 to 9.46)	b

<sup>a</sup>Tested using multi-covariate Poisson regression model that included the observed number of cases as the outcome, the log of the expected number of cases as the offset, and age at diagnosis (15-29, 30-39 years), sex (when appropriate), year of diagnosis (1975-1986, 1987-1999, 2000-2013), time since diagnosis (60-239, ≥240 months) as covariables.

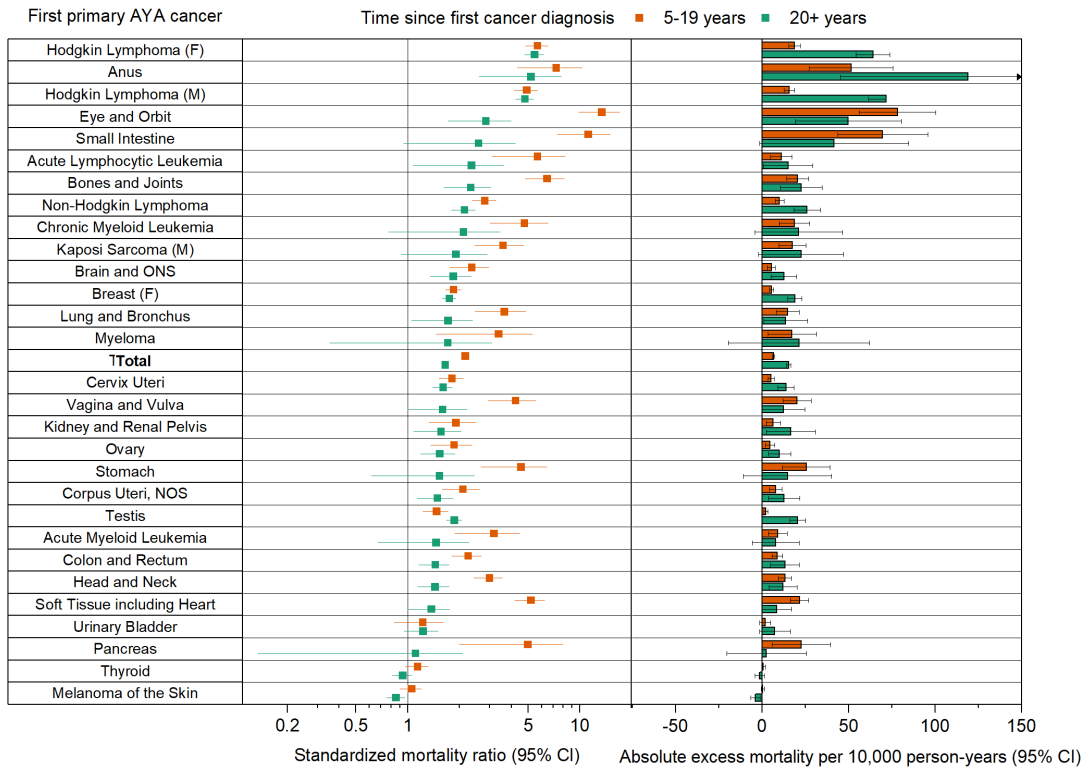
<sup>b</sup>Algorithm not converged

**Supplementary Figure 1.** Standardized incidence ratios and standardized mortality ratios for select subsequent primary cancers by time since first primary cancer diagnosis (5-19, 20+ years) among AYA cancer

**A. Risk of developing subsequent primary cancer**

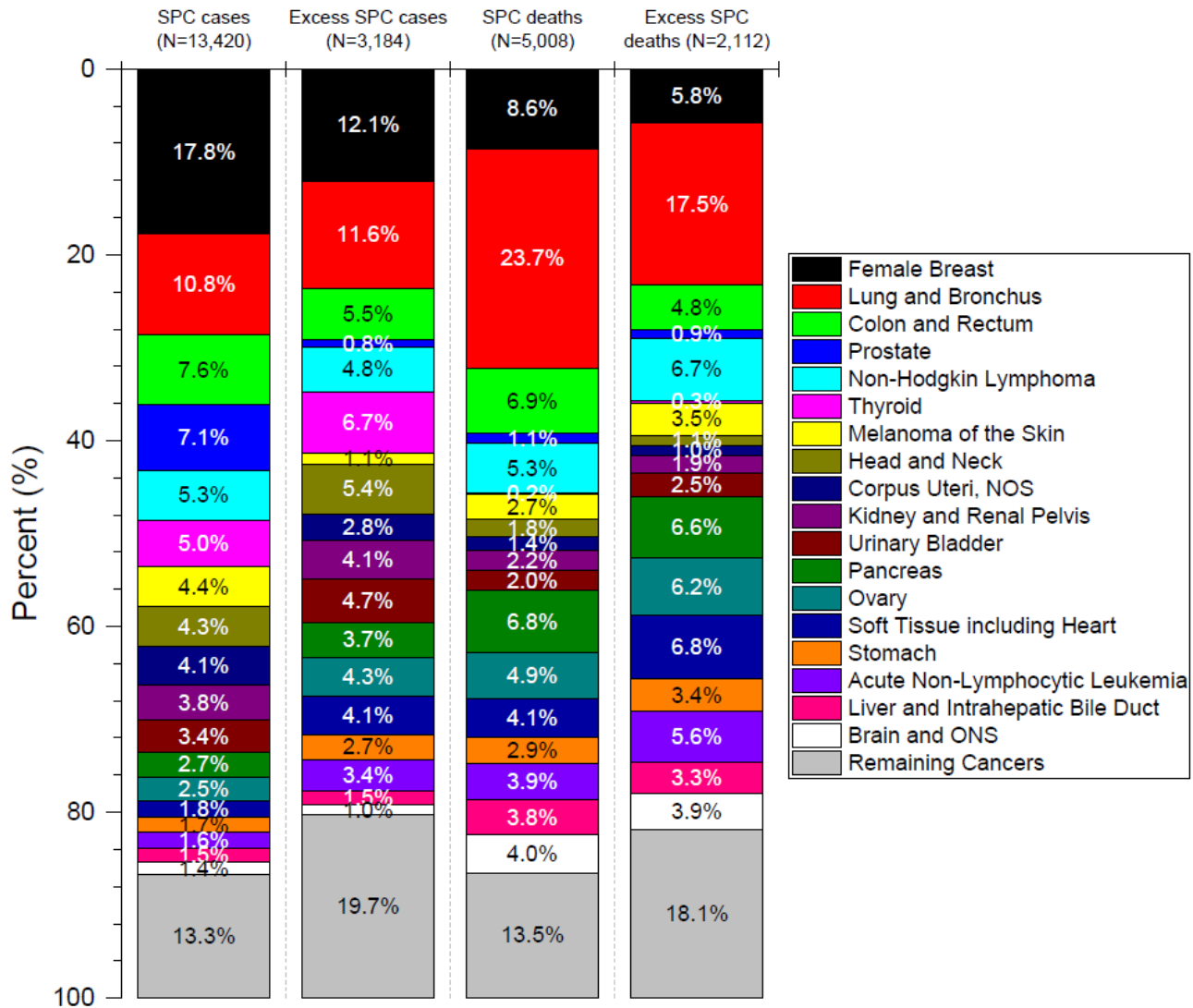


**B. Risk of dying from subsequent primary cancer**



survivors in 9 SEER registries (Figure continues on next page).

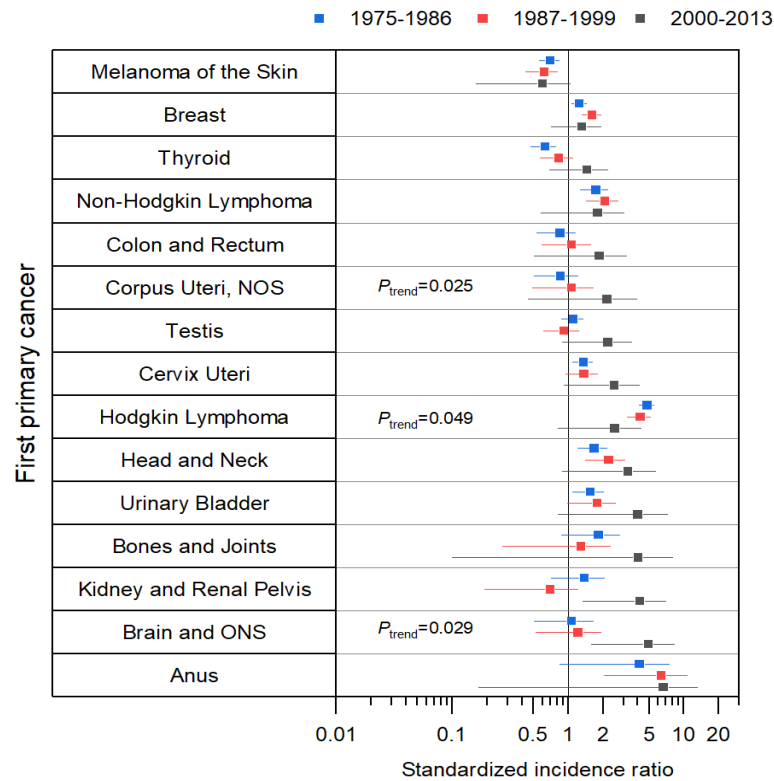
**Supplementary Figure 2.** Proportions of cancer types that account for subsequent primary cancer (SPC) cases, excess SPC cases, SPC deaths, and excess SPC deaths among all AYA cancer survivors combined



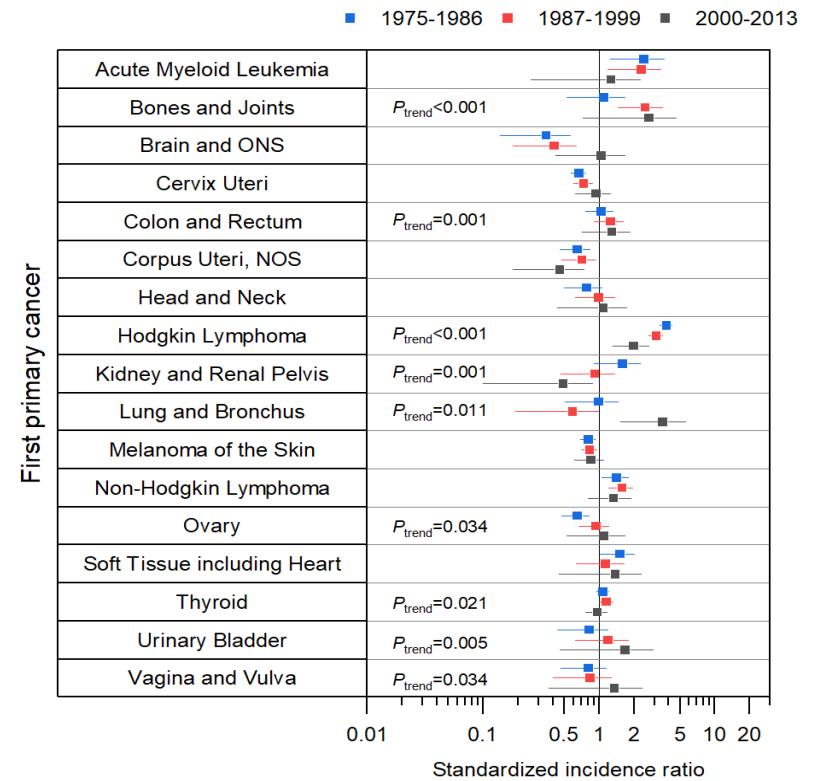
NOTE For the purpose of percentage calculation of specific type of subsequent primary cancers that contributed to the excess number of SPC cases (Excess SPC cases) and SPC deaths (Excess SPC deaths), denominator was obtained by summing observed number of SPC cases with AEI (absolute excess incidence)>0 and observed number of SPC deaths with AEM (absolute excess mortality)>0 from Supplementary Table 3, respectively.

**Supplementary Figure 3.** Standardized incidence ratios for the risk of developing select subsequent primary cancers by years of first AYA cancer diagnosis (1975-1986, 1987-1999, 2000-2013) among AYA cancer survivors in 9 SEER registries

A. Subsequent lung and bronchus cancers



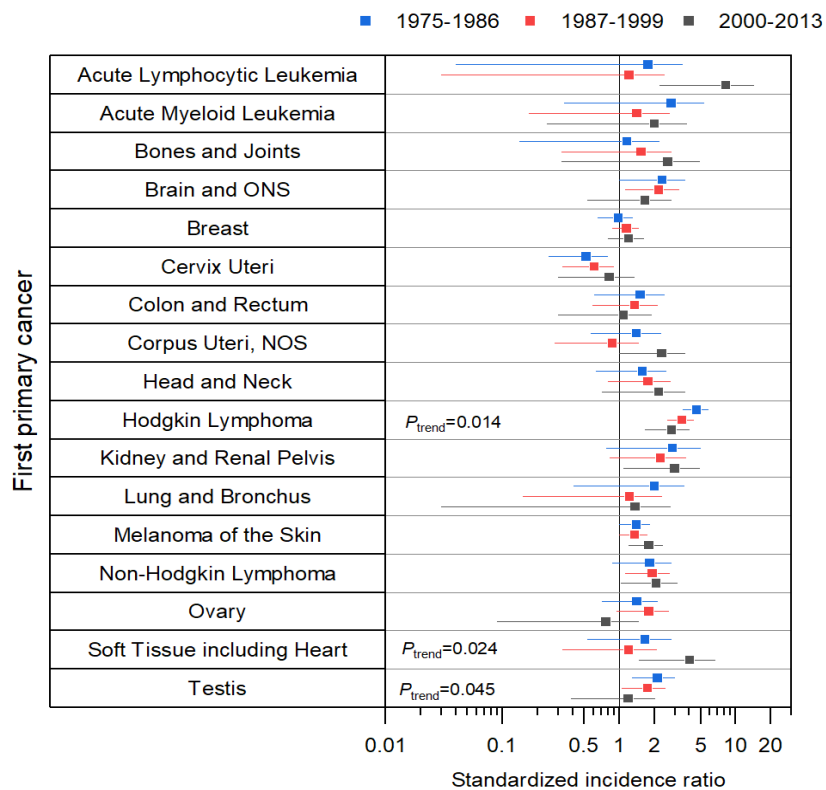
B. Subsequent female breast cancer



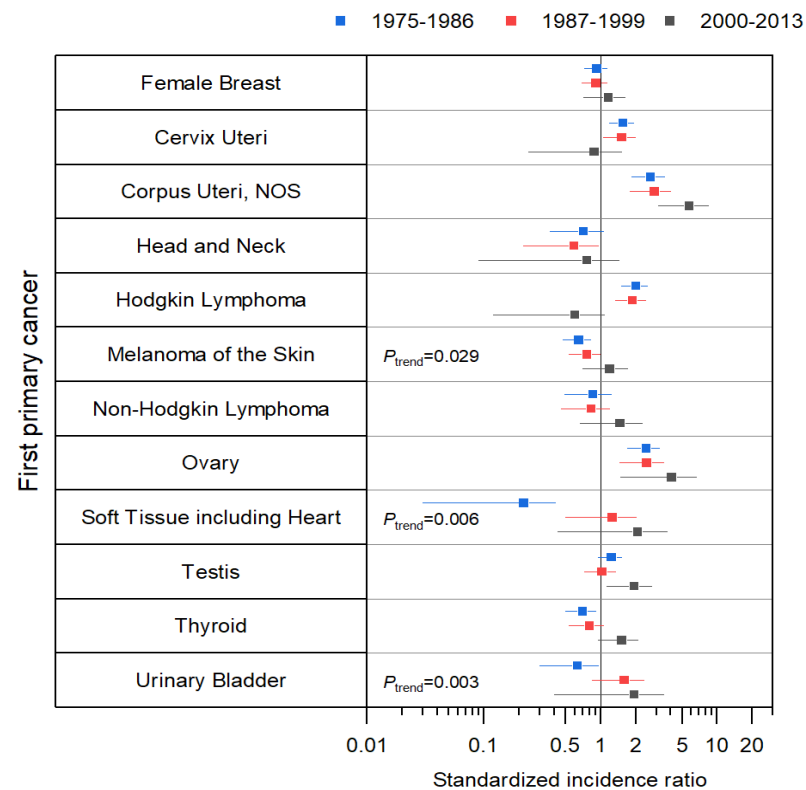
For select SPCs that accounted for the highest proportions of the total excess cases (**Supplementary Figure 2**), multi-covariate Poisson regression was used to test trends in SIRs across years of first primary cancer diagnosis (1975-1986, 1987-1999, 2000-2013).  $P_{trend}$  in the SIRs was obtained using the likelihood ratio test. The model included the observed number of cases as the outcome, year of diagnosis as an explanatory variable, the log of the expected number of cases as the offset, and age at diagnosis (15-19, 20-29, 30-39 years), sex (when appropriate), time since diagnosis (60-119, 120-239, 240-359,  $\geq 360$  months) as covariables.[2, 4] Combining sexes for Hodgkin lymphoma survivors was preferred due to the small number of observed SPCs. No significant difference by sex in the SIR trend was found except for the risk of subsequent head and neck cancer ( $P_{heterogeneity\ by\ sex} < 0.0001$ ). The trend analysis was performed using SAS software (SAS Institute Inc., Cary, NC).



### C. Subsequent thyroid cancer

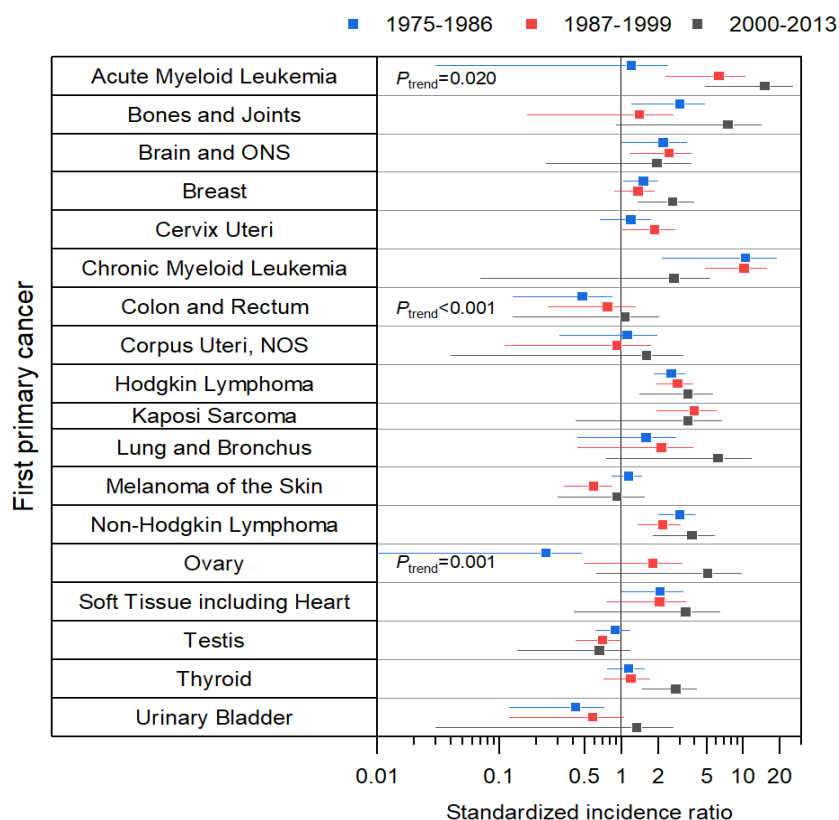


### D. Subsequent colorectal cancer



For select SPCs that accounted for the highest proportions of the total excess cases (**Supplementary Figure 2**), multi-covariate Poisson regression was used to test trends in SIRs across years of first primary cancer diagnosis (1975-1986, 1987-1999, 2000-2013).  $P_{trend}$  in the SIRs was obtained using the likelihood ratio test. The model included the observed number of cases as the outcome, year of diagnosis as an explanatory variable, the log of the expected number of cases as the offset, and age at diagnosis (15-19, 20-29, 30-39 years), sex (when appropriate), time since diagnosis (60-119, 120-239, 240-359,  $\geq 360$  months) as covariables.[2, 4] Combining sexes for Hodgkin lymphoma survivors was preferred due to the small number of observed SPCs. No significant difference by sex in the SIR trend was found except for the risk of subsequent head and neck cancer ( $P_{heterogeneity\ by\ sex} < 0.0001$ ). The trend analysis was performed using SAS software (SAS Institute Inc., Cary, NC).

## E. Subsequent head and neck cancers



For select SPCs that accounted for the highest proportions of the total excess cases (**Supplementary Figure 2**), multi-covariate Poisson regression was used to test trends in SIRs across years of first primary cancer diagnosis (1975-1986, 1987-1999, 2000-2013).  $P_{trend}$  in the SIRs was obtained using the likelihood ratio test. The model included the observed number of cases as the outcome, year of diagnosis as an explanatory variable, the log of the expected number of cases as the offset, and age at diagnosis (15-19, 20-29, 30-39 years), sex (when appropriate), time since diagnosis (60-119, 120-239, 240-359,  $\geq 360$  months) as covariables.[2, 4] Combining sexes for Hodgkin lymphoma survivors was preferred due to the small number of observed SPCs. No significant difference by sex in the SIR trend was found except for the risk of subsequent head and neck cancers ( $P_{heterogeneity\ by\ sex} < 0.0001$ ). The trend analysis was performed using SAS software (SAS Institute Inc., Cary, NC).