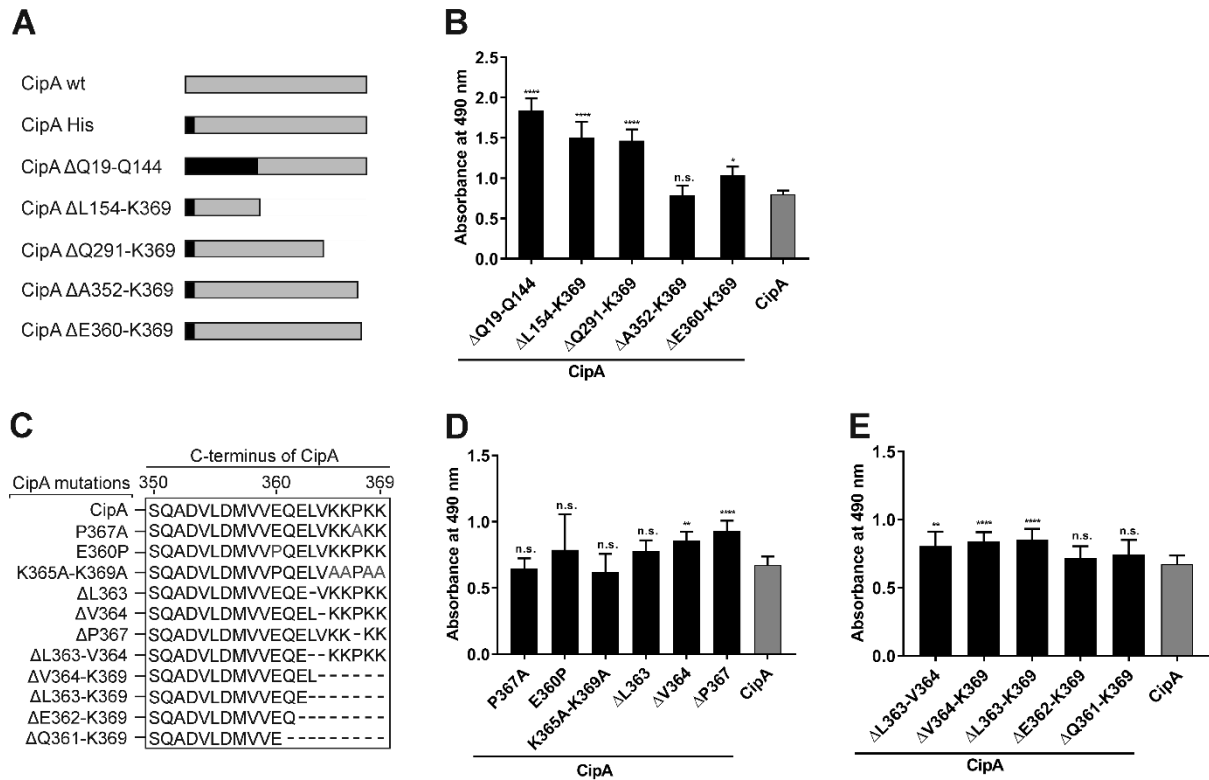


Supplementary figure 3



Binding of C3b to CipA variants. Schematic representation of N- and C-terminal deletion CipA variants (A) the introduced deletions and substitutions within the C-terminus of CipA (C). Protein binding of C3b to CipA variants was measured by ELISA (B, D, and E). CipA (5 ng/μl) coated wells were incubated with purified C3b (5 ng/μl) and antigen-antibody complexes were detected using an anti-C3 antibody (1:1,000). Data represent means and standard deviation of at least three different experiments, each conducted in triplicate. *, $p \leq 0.05$; **, $p \leq 0.005$; ****, $p \leq 0.0001$, n.s., no statistical significance, one-way ANOVA with post-hoc Bonferroni multiple comparison test (confidence interval = 95%).