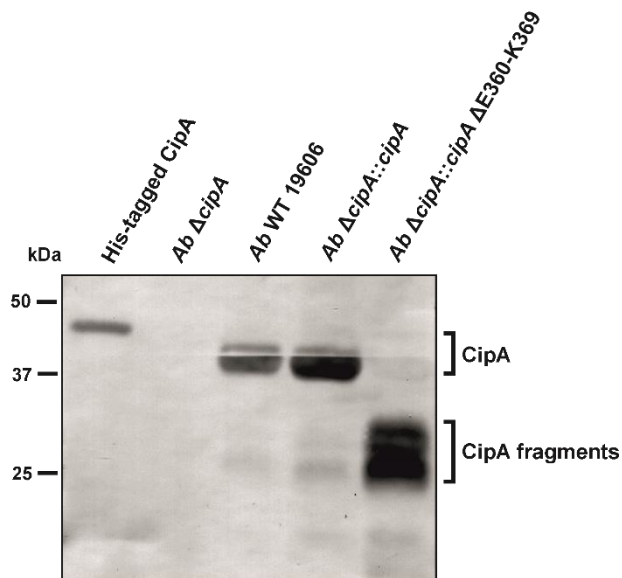


Supplementary figure 7



Characterization of *A. baumannii* strains producing diverse CipA variants. CipA was detected in cell lysates (10 μ g each) of *A. baumannii* Δ *cipA*, WT 19606 WT, Δ *cipA*::*cipA* and Δ *cipA*::*cipA* Δ E360-K369 by Western blotting using an anti-CipA antibody (1:100). His-tagged CipA was used as control. Native CipA was indicated on the left as well as CipA fragments in strain *A. baumannii* Δ *cipA*::*cipA* Δ E360-K369.