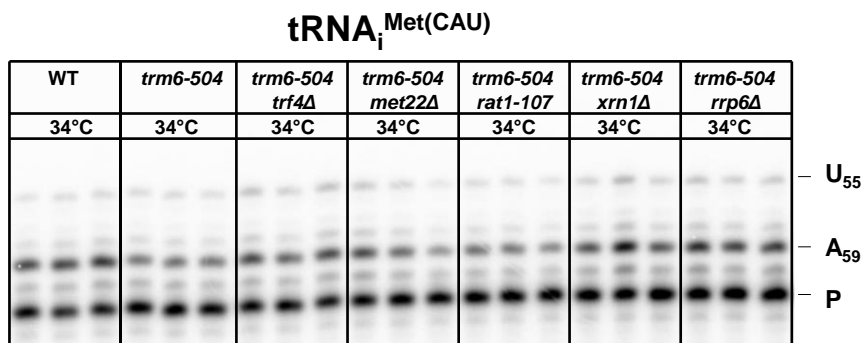
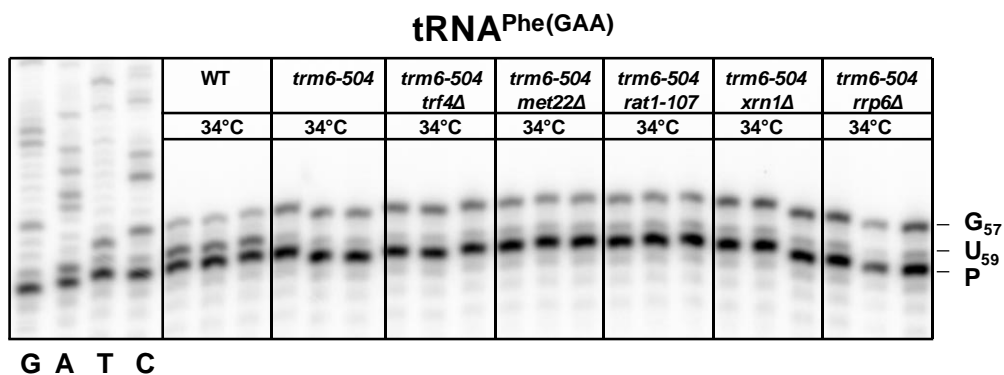


A



B



C

strain	avg % m ¹ A ₅₈ of total tRNA	
	tRNA _i ^{Met(CAU)}	tRNA ^{Phe(GAA)}
WT	97.6 ± 0.3	81.8 ± 0.7
<i>trm6-504</i>	94.8 ± 0.7	37.2 ± 1.2
<i>trm6-504 trf4Δ</i>	92.6 ± 0.9	29.1 ± 2.0
<i>trm6-504 met22Δ</i>	94.5 ± 0.9	44.0 ± 1.5
<i>trm6-504 rat1-107</i>	95.2 ± 0.2	44.0 ± 2.1
<i>trm6-504 xrn1Δ</i>	94.3 ± 1.0	30.0 ± 2.0
<i>trm6-504 rrp6Δ</i>	94.9 ± 0.4	28.3 ± 3.3