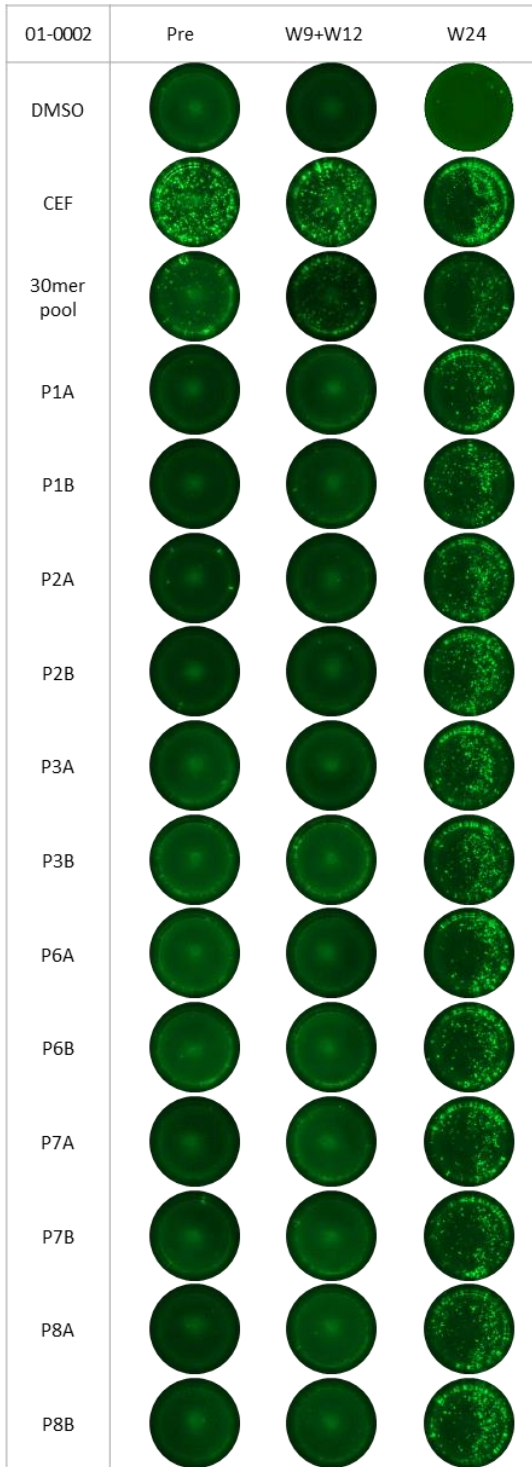
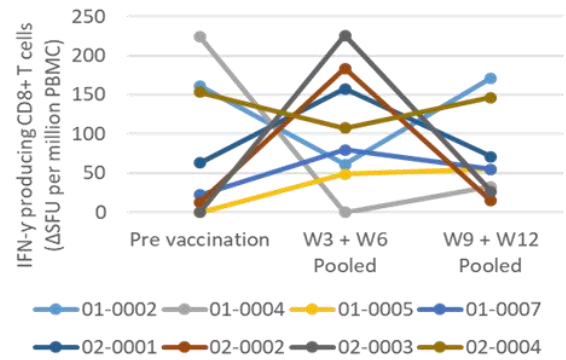


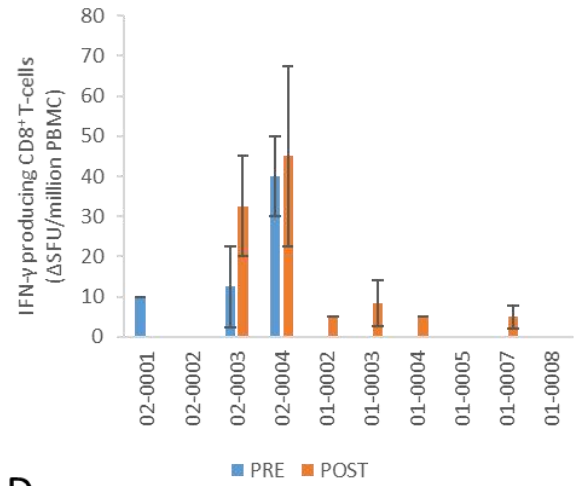
A



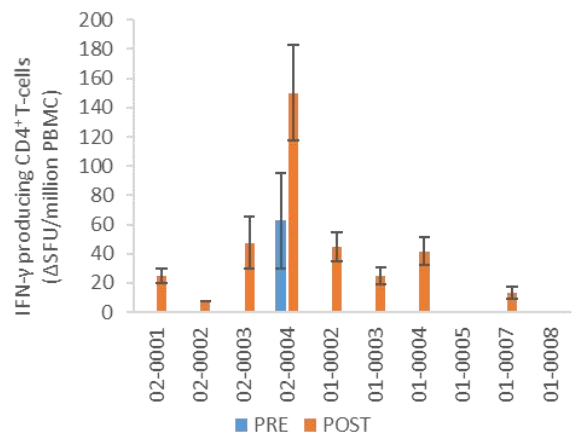
B



C



D



E

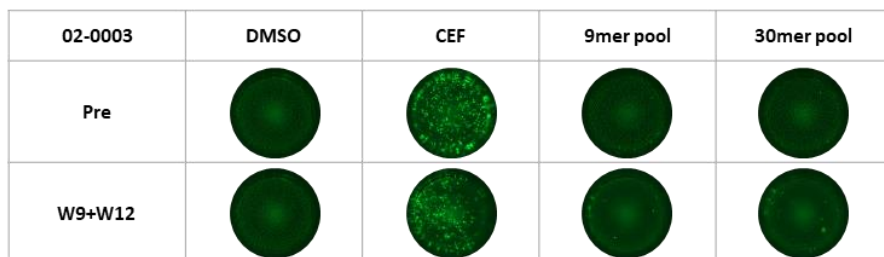


Figure S3: The breadth and magnitude of PolyPEPI1018-specific T cell responses

(A) Representative well images (one of 2 or three replicates) of IVS ELISpot (FluoroSpot) for patient 01-0002. Individual 9-mers (Supplementary Table S1), pooled 30-mers, DMSO negative control, and CEF positive control conditions are presented for 3 timepoints (PRE, Week 9+12 pooled and Week 24). (B) Time course of the CD8⁺ T cell responses through baseline (pre-vaccination) and Week 12 measured after a single dose. Each line represents one patient (n=8). Determined using IVS ELISpot. (C-D) Ex vivo detected PolyPEPI1018 vaccine-specific CD8⁺ (detected for pooled 9mers) and CD4⁺ (detected for pooled 30mers) T cell responses at baseline (PRE) and after vaccination (POST) using *ex vivo* ELISpot assay. Δ SFU – background corrected spot-forming units. Error bars represent SEM. (E) Representative well images (one of two replicates) of *ex vivo* ELISpot (FluoroSpot) for subject 02-0003 for 2 timepoints (PRE and Week 9+12 pooled) with the following conditions: pooled 9mer, or pooled 30mer test peptides, DMSO negative control, CEF positive control.