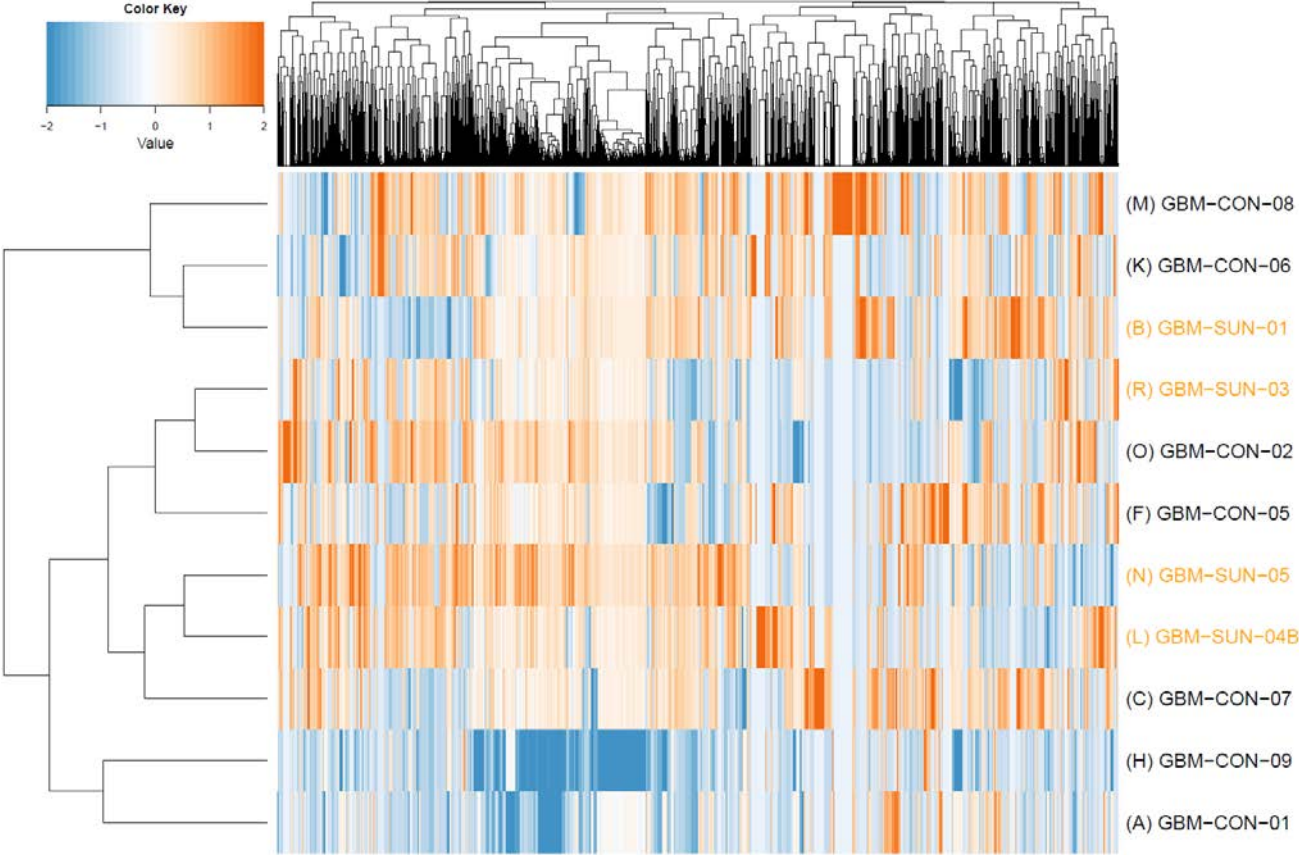


Supplementary Figure 2 Unsupervised clustering of the tyrosine phosphoproteome



Supplementary Figure 1. Unsupervised hierarchical clustering of the pTyr-phosphoproteome could not separate between sunitinib-treated (SUN) and control tumor (CON) samples. The heatmap shows the relative phosphopeptide intensities (z-score) based on log10-transformed values (orange: high abundance, blue: low abundance).