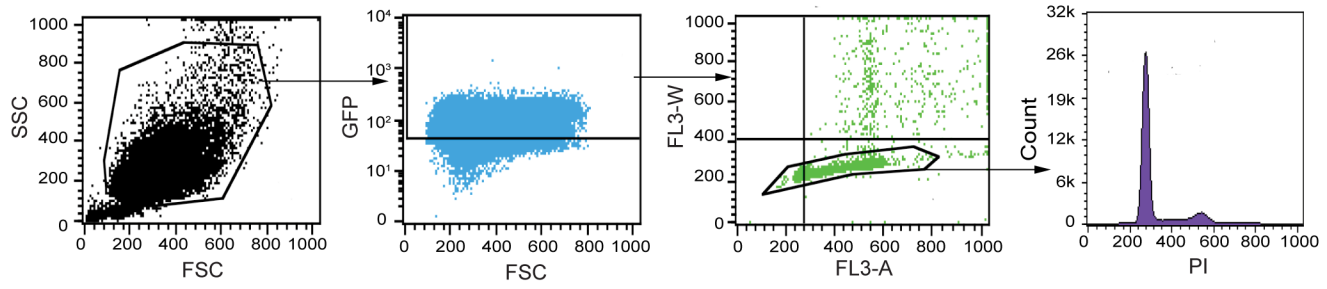

Supplementary information

Brown-fat-mediated tumour suppression by cold-altered global metabolism

In the format provided by the
authors and unedited

Supplementary Figure 1-Extended Data Fig. 1c, d:
Gating strategies used for Extended Data Fig. 1c, d.
FSC/SSC gate for the elimination of debris followed by a gate for GFP⁺ tumor cells isolation.
Further, PI-Width/PI-Area was used for doublet exclusion for PI histograms.

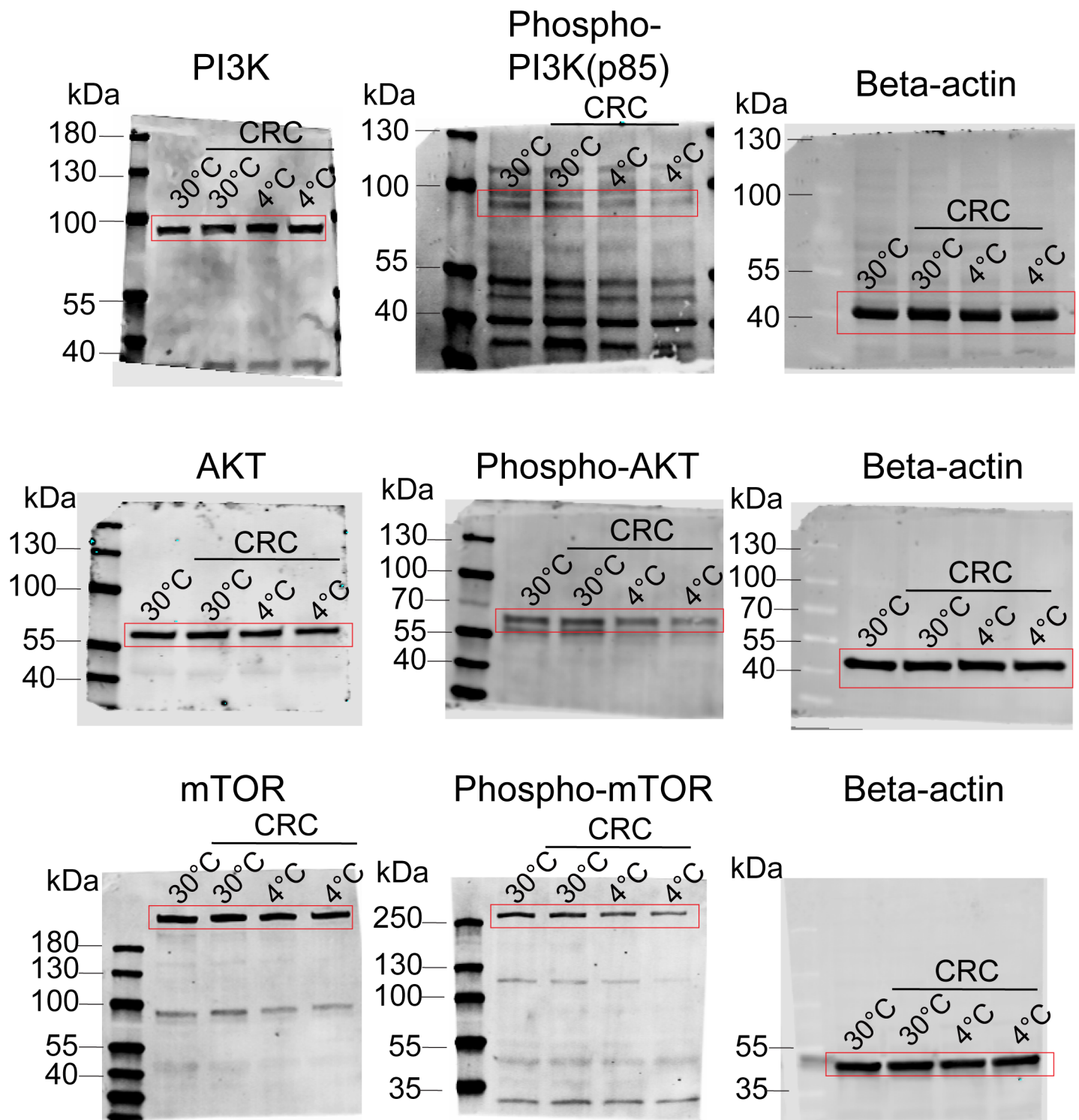


Supplementary Figure 2-Fig.4e:

Raw data of gels for immunoblots.

Whole gel images. Full scans of immunoblots in Fig.4e.

Boxes imply area shown in the Figure.



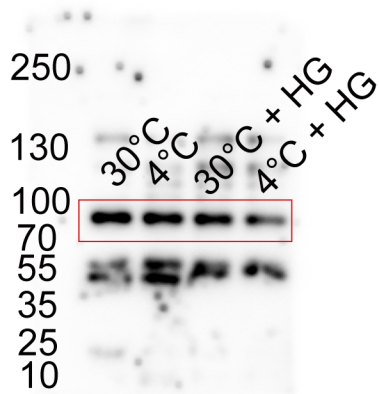
Supplementary Figure 2-Fig.5c:

Raw data of gels for immunoblots.

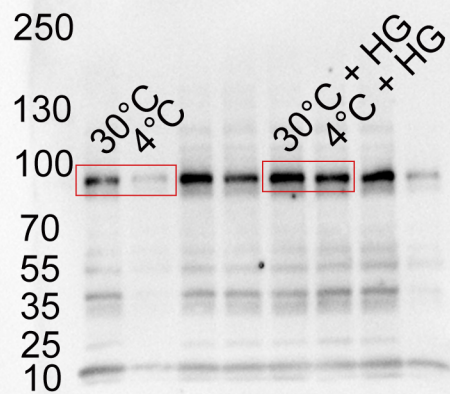
Whole gel images. Full scans of immunoblots in Fig.5c

Boxes imply area shown in the Figure.

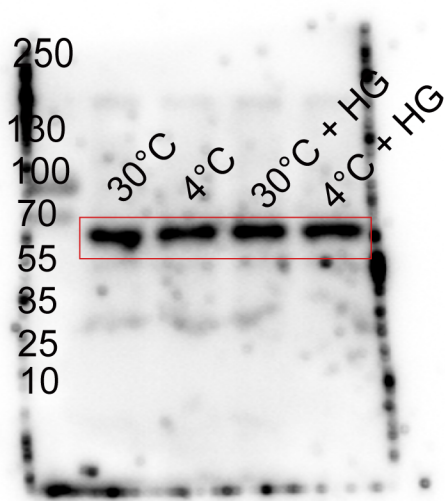
PI3K



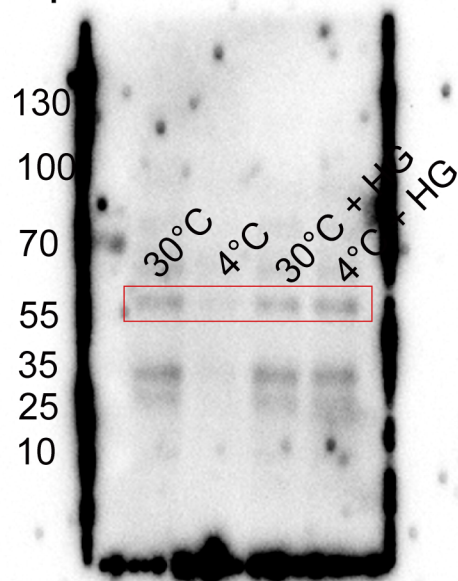
Phospho-PI3K(p85)



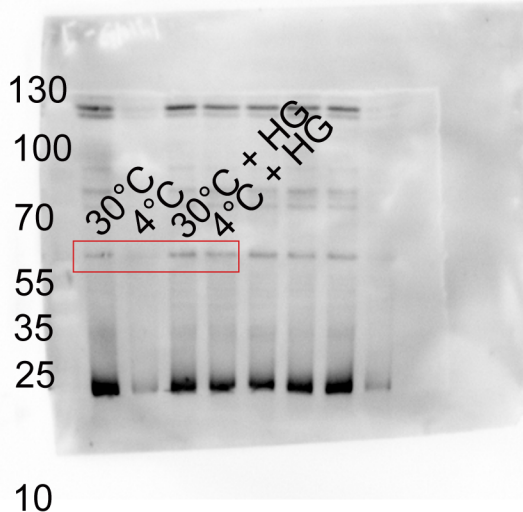
AKT



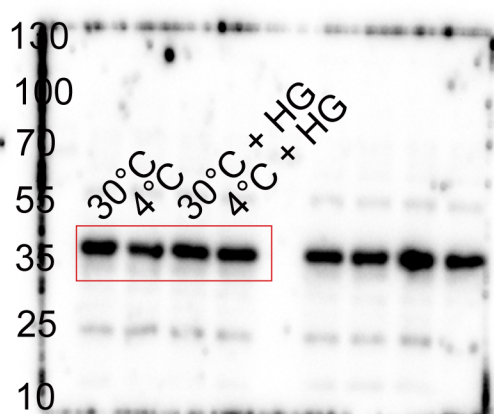
Phospho-AKT



GLUT1



GAPDH



Supplementary Figure 2-Extended Data Fig 5I:

Raw data of gels for immunoblots.

Whole gel images. Full scans of immunoblots in Extended Data Fig 5I.

Boxes imply area shown in the Figure.

