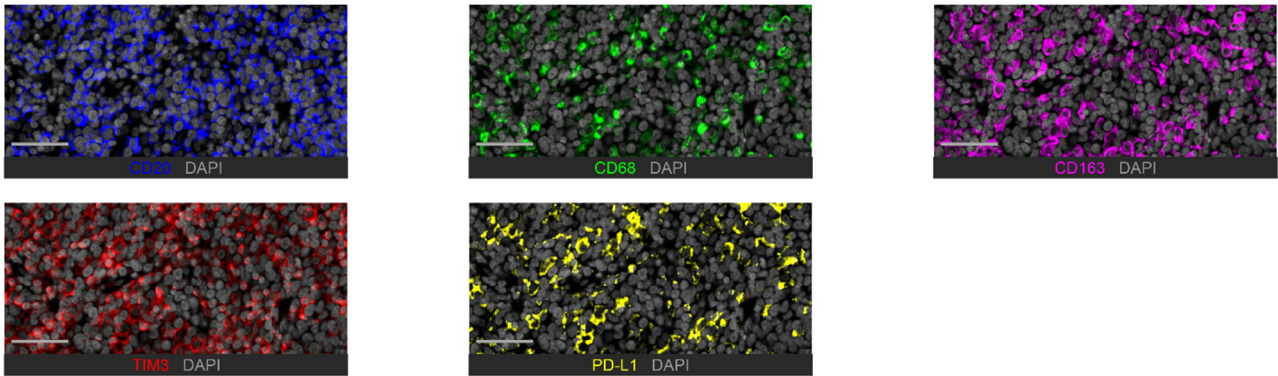
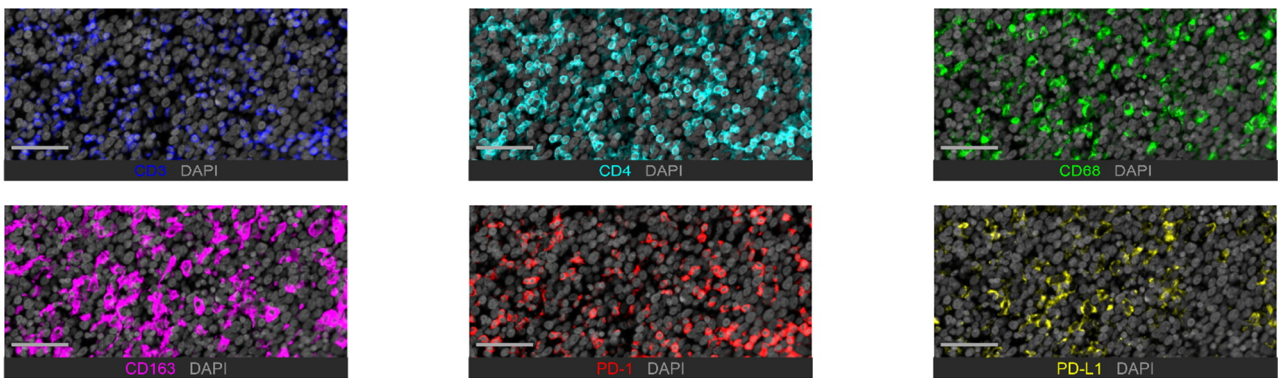


Supplementary Fig. S2: Representative images from the mIHC panels with individual channels

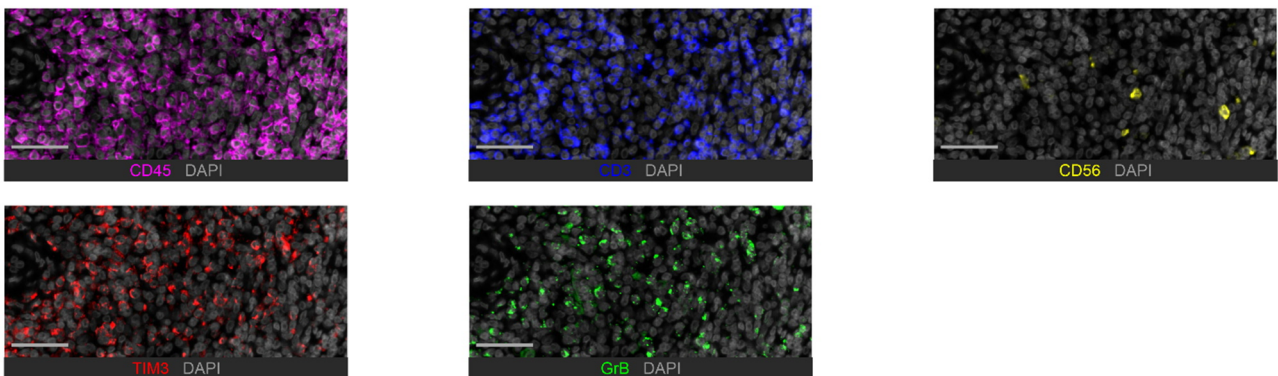
A



B



C



Supplementary Fig. S2: Representative images from the mIHC panels with individual channels.

A-C) Single channel images from the merged mIHC images shown in Figure 1A. A) Macrophages and B cells: CD20=blue, CD68=green, CD163=magenta, TIM3=red, PD-L1=yellow, DAPI=gray. B) Macrophages and T cells: CD3=blue, CD4=cyan, CD68=green, CD163=magenta, PD-1=red, PD-L1=yellow, DAPI=gray. C) NK cells: CD45=magenta, CD3=blue, CD56=yellow, TIM3=red, Granzyme B=green, DAPI=gray. Scale bar 50 μ m.