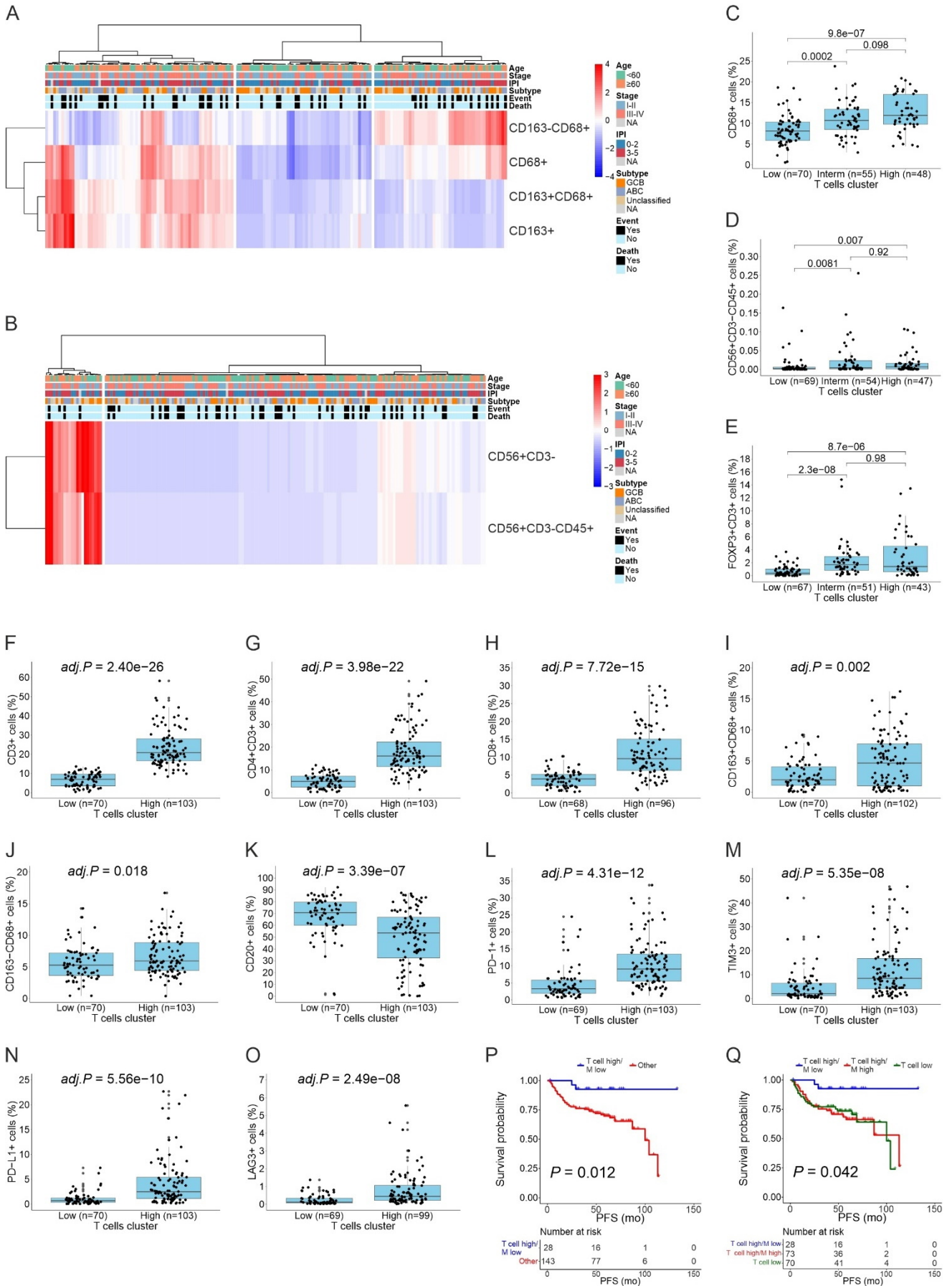
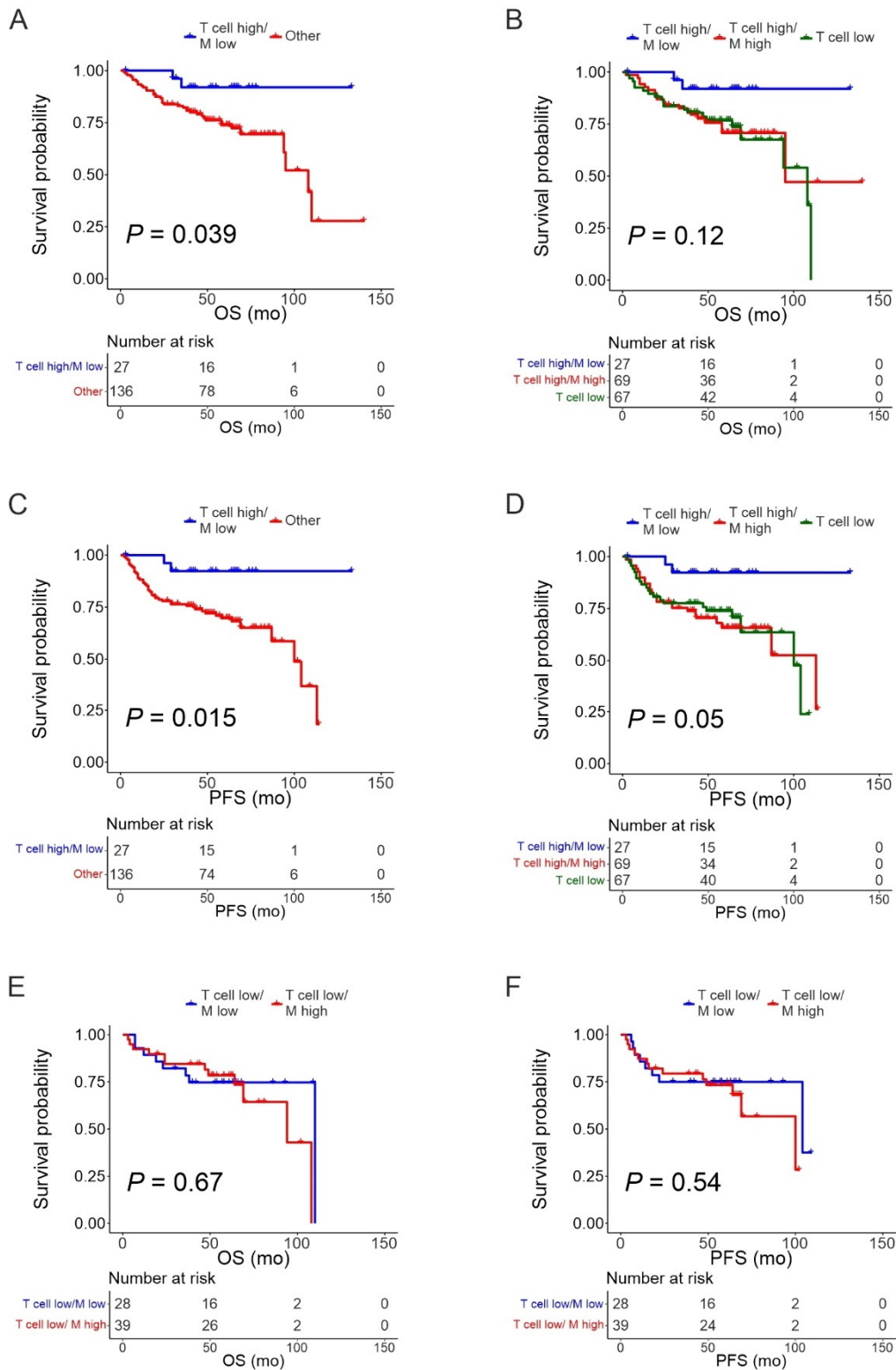


Supplementary Fig. S4: The clinical impact of macrophages, NK cells and T cells in the DLBCL LME analyzed by mIHC

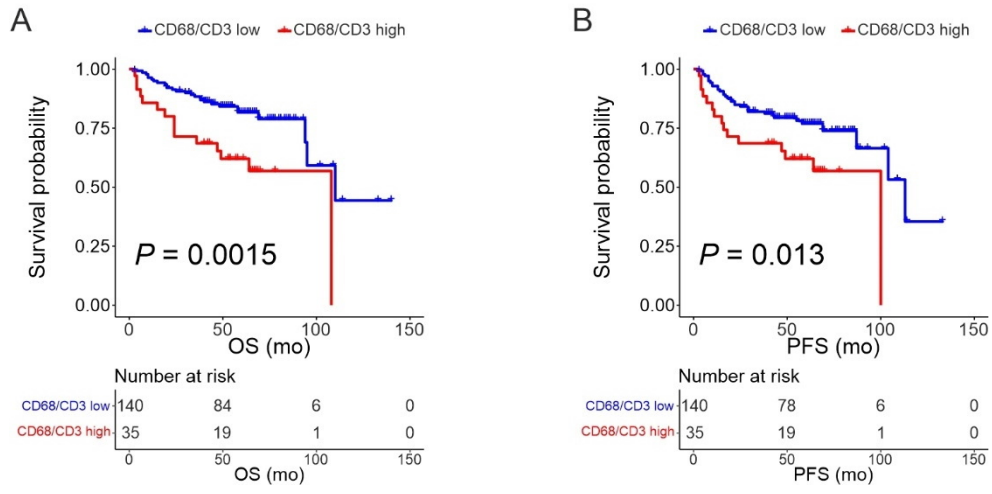


Supplementary Fig. S4: The clinical impact of macrophages, NK cells and T cells in the DLBCL LME analyzed by mIHC. A) Unsupervised hierarchical clustering of samples based on the proportion of macrophages. B) Unsupervised hierarchical clustering of samples based on the proportion of NK cells. C-E) Boxplots depicting the proportions of macrophages (C), NK cells (D), and regulatory T cells (E), in the groups with high, intermediate, and low proportions of T cells. F-O) Boxplots depicting the proportions of T cells (F), CD4+ T cells (G), CD8+ T cells (H), CD163+ macrophages (I), CD163- macrophages (J), B cells (K), PD-1+ cells (L), TIM3+ cells (M), PD-L1+ cells (N), and LAG3+ cells (O) in the groups with high and low proportion of T cells. P-Q) Kaplan-Meier (log-rank test) survival plot depicts PFS in the T cell high/macrophage low (T cell high/M low) and T cell high/macrophage high or T cell low groups (P), as well as in the T cell high/macrophage low (T cell high/M low), T cell high/macrophage high (T cell high/M high), and the T cell low groups (Q).

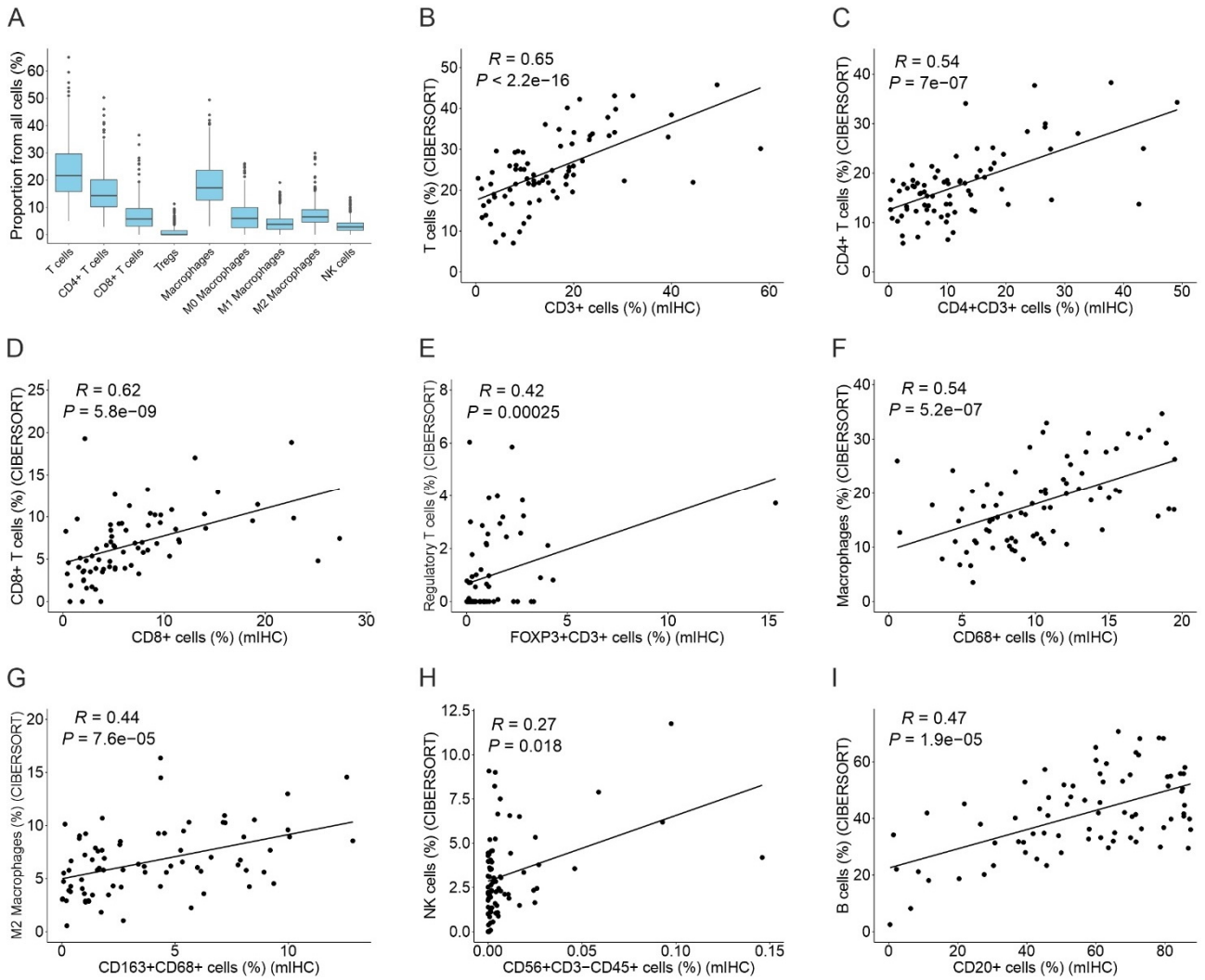
Supplementary Fig. S6: The clinical impact of macrophages in the T cell high and low groups in non-double hit DLBCL patients in the mIHC cohort



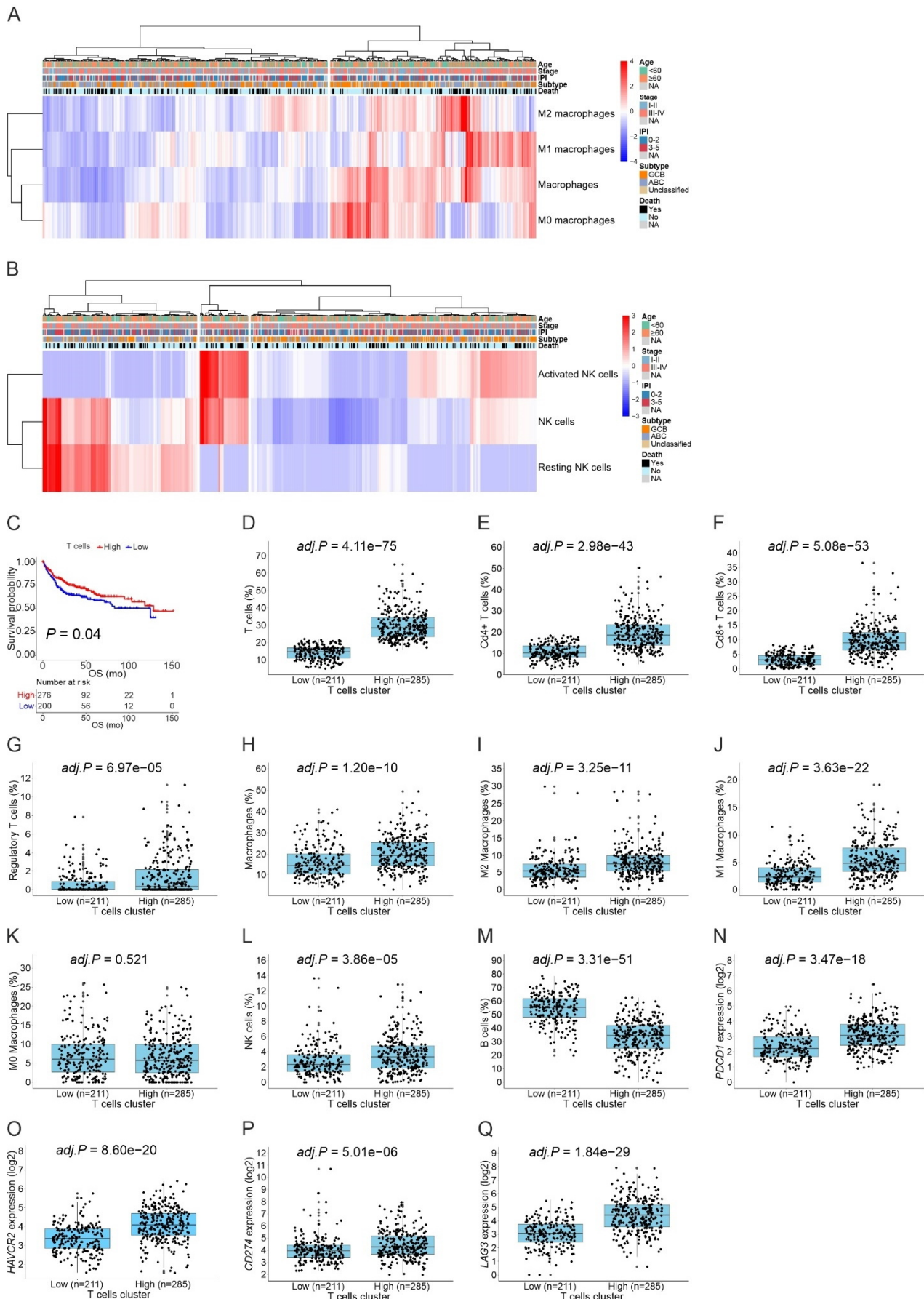
Supplementary Fig. S7: The clinical impact of the macrophage/T cell proportion in the mIHC cohort



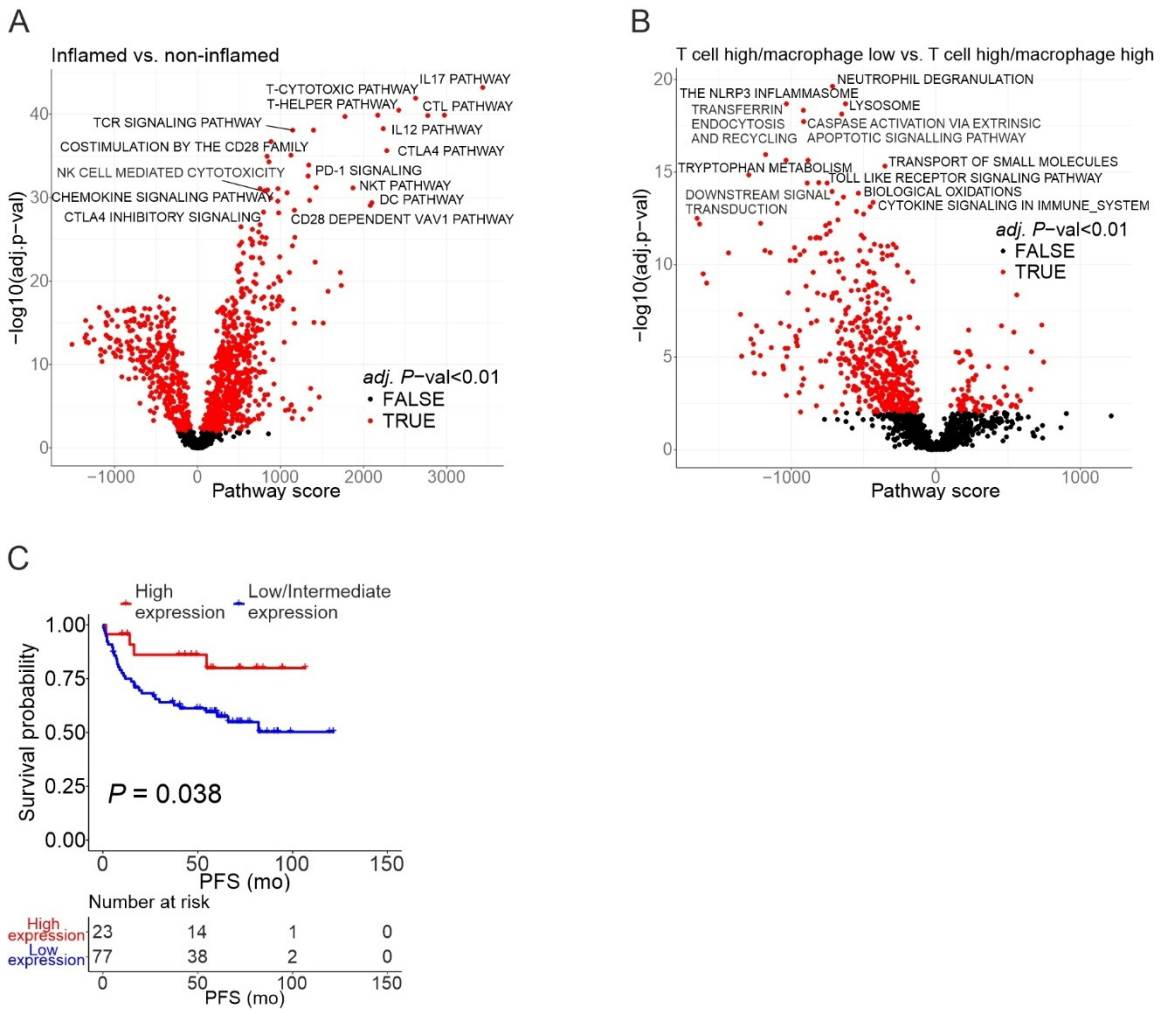
Supplementary Fig. S8: CIBERSORT deconvolution analysis in the Reddy et al. validation cohort



Supplementary Fig. S9: The clinical impact of macrophages, NK cells and T cells in the LME analyzed by CIBERSORT in the Reddy et al. validation cohort

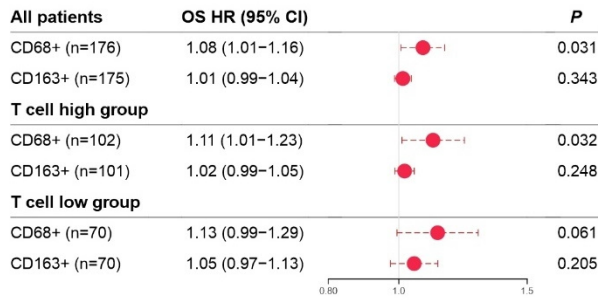


Supplementary Fig. S10: Differential expression of genes and pathways between distinct LME phenotypes

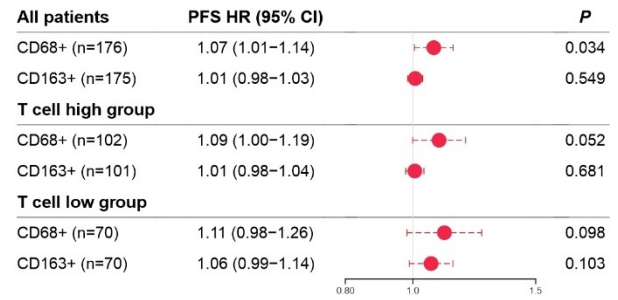


Supplementary Fig. S11: Clinical impact of immune checkpoint expressing macrophages

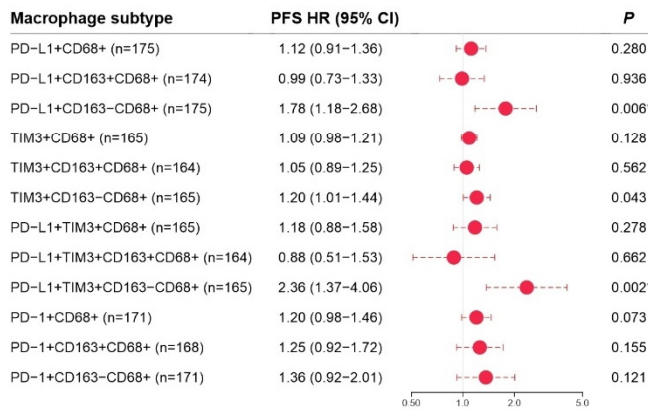
A



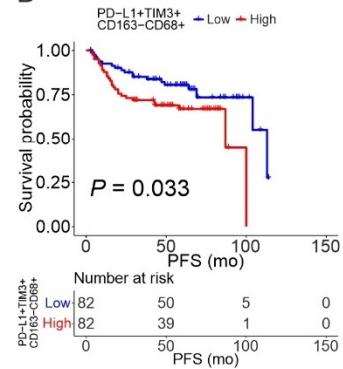
B



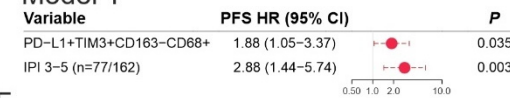
C All patients



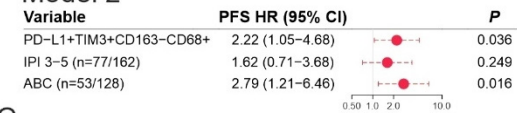
D



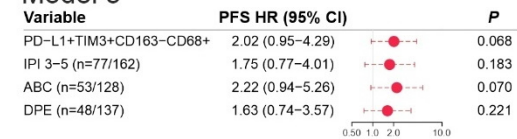
E Model 1



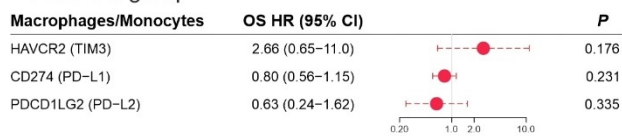
F Model 2



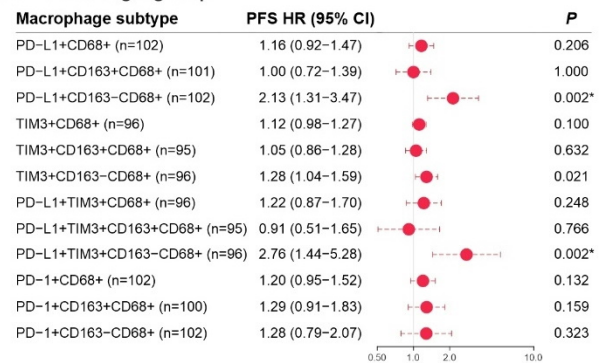
G Model 3



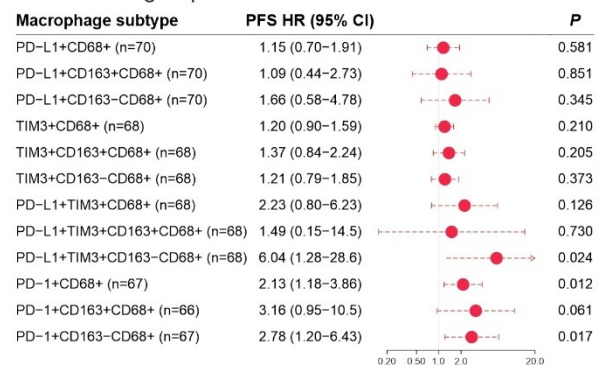
J T cell low group



H T cell high group

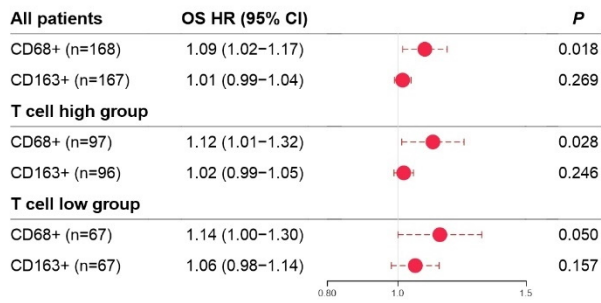


I T cell low group

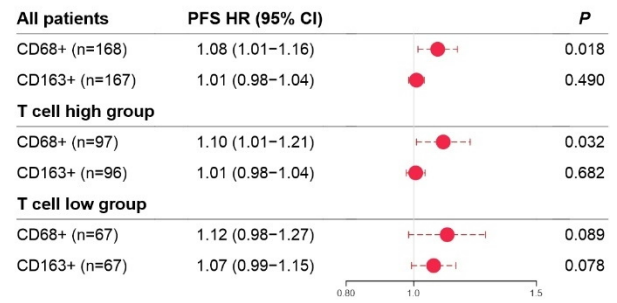


Supplementary Fig. S12: Clinical impact of immune checkpoint expressing macrophages in non-double hit DLBCL patients

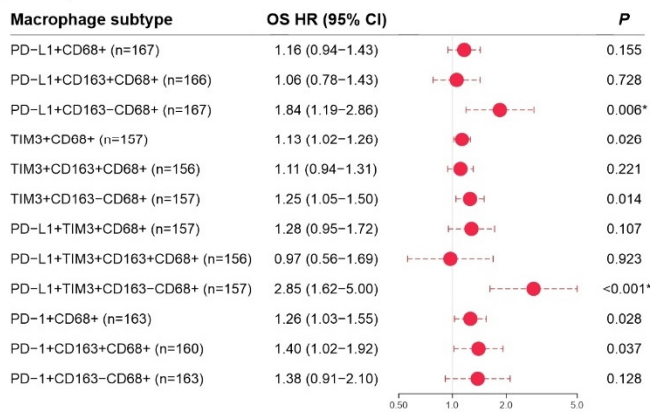
A



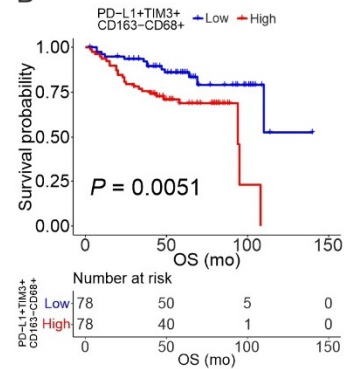
B



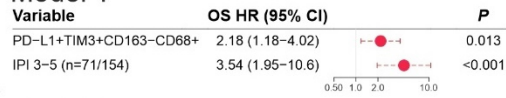
C All patients



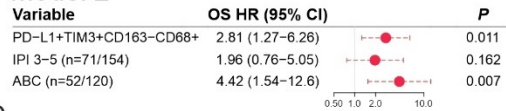
D



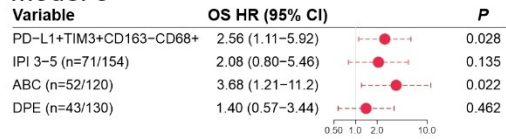
E Model 1



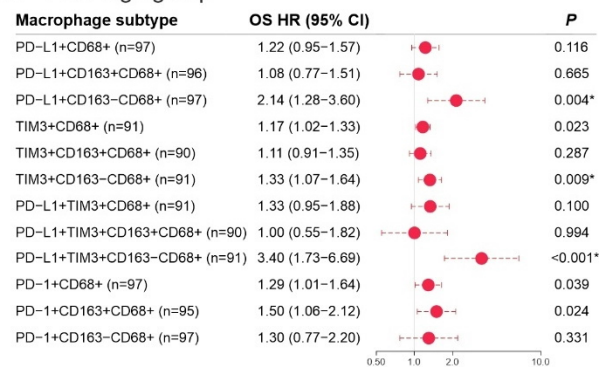
F Model 2



G Model 3



H T cell high group



I T cell low group

