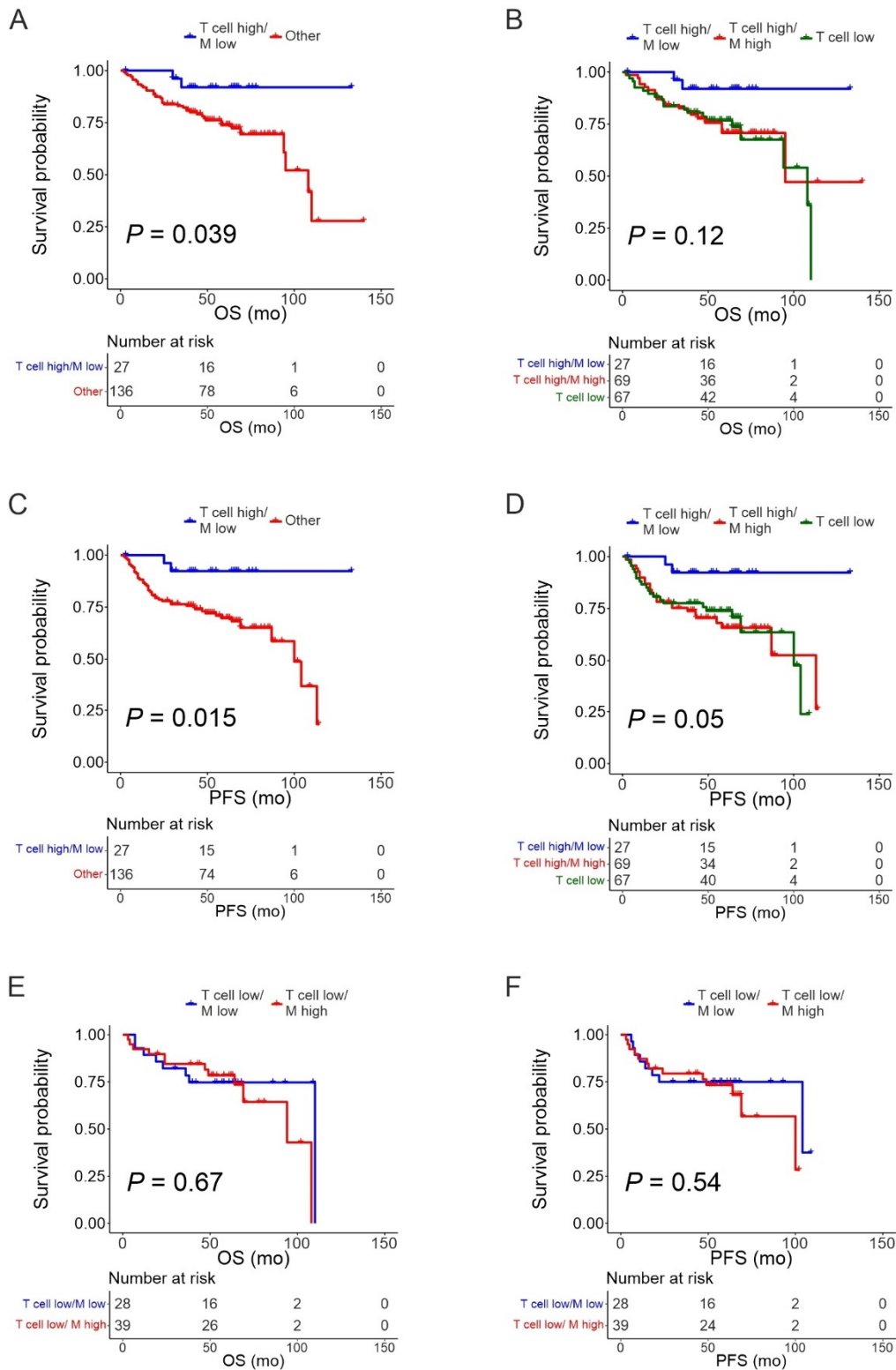


Supplementary Fig. S6: The clinical impact of macrophages in the T cell high and low groups in non-double hit DLBCL patients in the mIHC cohort



Supplementary Fig. S6: The clinical impact of macrophages in the T cell high and low groups in non-double hit DLBCL patients in the mIHC cohort. A-B) Kaplan-Meier (log-rank test) survival plots depict OS in the T cell high/macrophage low (T cell high/M low) and T cell high/macrophage high (T cell high/M high) or T cell low groups (A), as well as in the T cell high/macrophage low (T cell high/M low), T cell high/macrophage high (T cell high/M high), and the T cell low groups (B) in the mIHC cohort. C-D) Kaplan-Meier (log-rank test) survival plots depict PFS in the T cell high/macrophage low (T cell high/M low) and T cell high/macrophage high (T cell high/M high) or T cell low groups (C), as well as in the T cell high/macrophage low (T cell high/M low), T cell high/macrophage high (T cell high/M high), and T cell low groups (D) in the mIHC cohort. E-F) Kaplan-Meier (log-rank test) survival plots depict OS (E) and PFS (F) in the T cell low/macrophage low (T cell low/M low) and in the T cell low/macrophage high (T cell low/M high) groups.