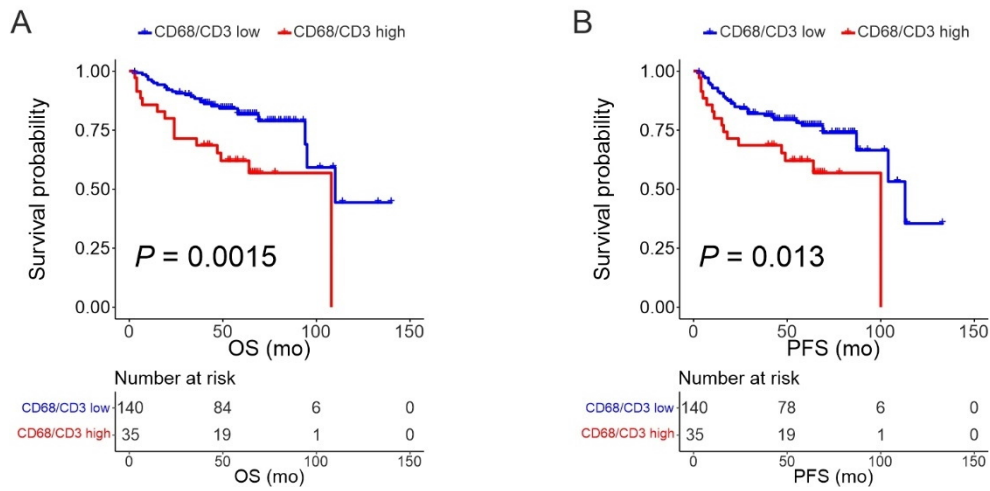


Supplementary Fig. S7: The clinical impact of the macrophage/T cell proportion in the mIHC cohort



Supplementary Fig. S7: The clinical impact of the macrophage/T cell proportion in the mIHC cohort. A-B) Kaplan-Meier (log-rank test) survival plots depict OS (A) and PFS (B) in patients with low and high macrophage/T cell (CD68/CD3) proportion in their DLBCL LME. Cut-off was set at the highest fifth compared to the lowest four fifths.