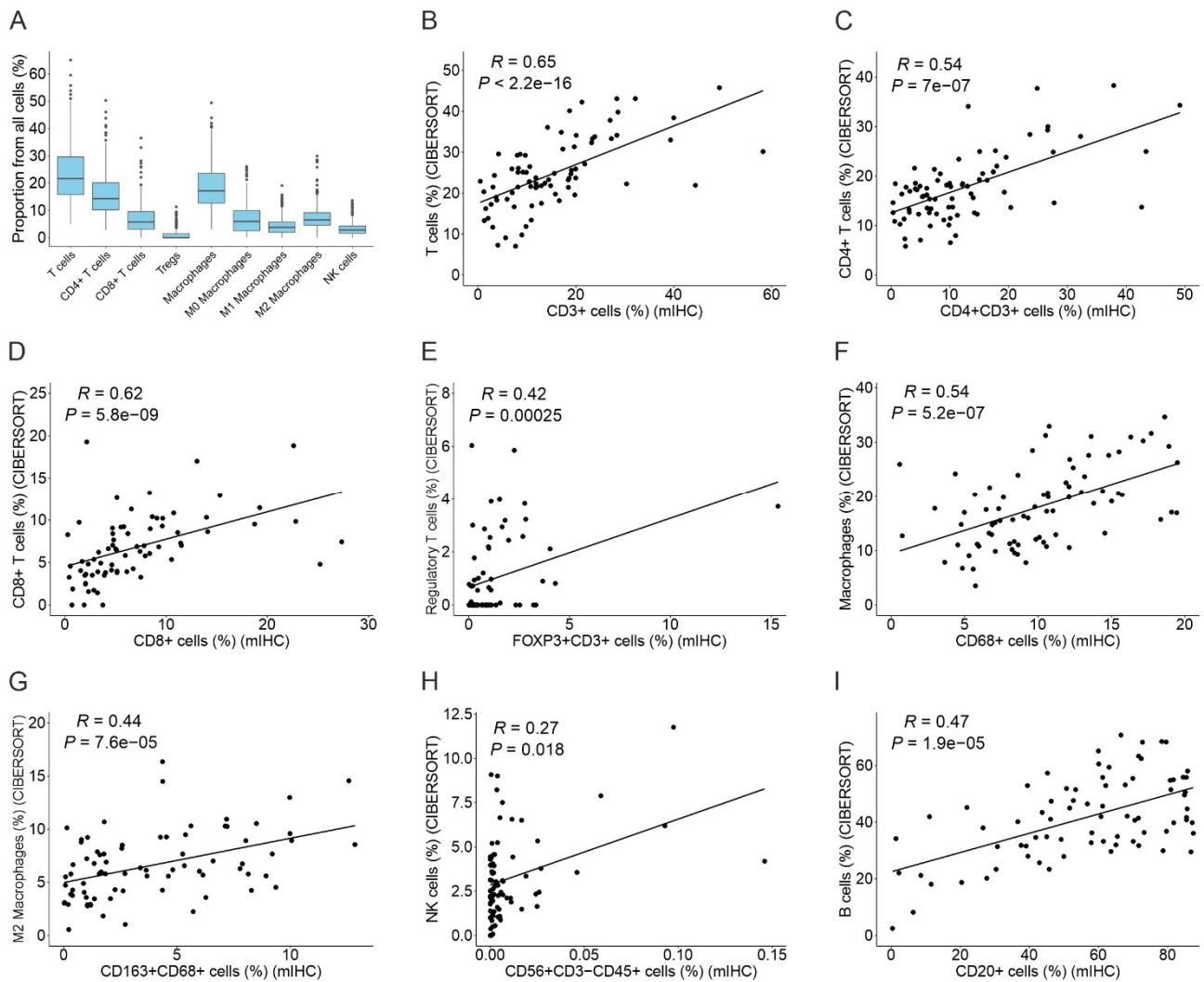


**Supplementary Fig. S8: CIBERSORT deconvolution analysis in the Reddy et al. validation cohort**



Supplementary Fig. S8: CIBERSORT deconvolution analysis in the Reddy et al. validation cohort. A) Proportions of different immune cell subtypes in the DLBCL LME in the Reddy et al. cohort inferred by CIBERSORT deconvolution analysis. B-I) Spearman rank correlation between the proportion of T cells (B), CD4+ T cells (C), CD8+ T cells (D), Regulatory T cells (E), macrophages (F), M2 macrophages (G), NK cells (H), and B cells (I) in the TME analyzed by mIHC and CIBERSORT (n=77). The proportion of immune cells analyzed by mIHC is depicted on the x-axis and the proportion of immune cells inferred by CIBERSORT is depicted on the y-axis.