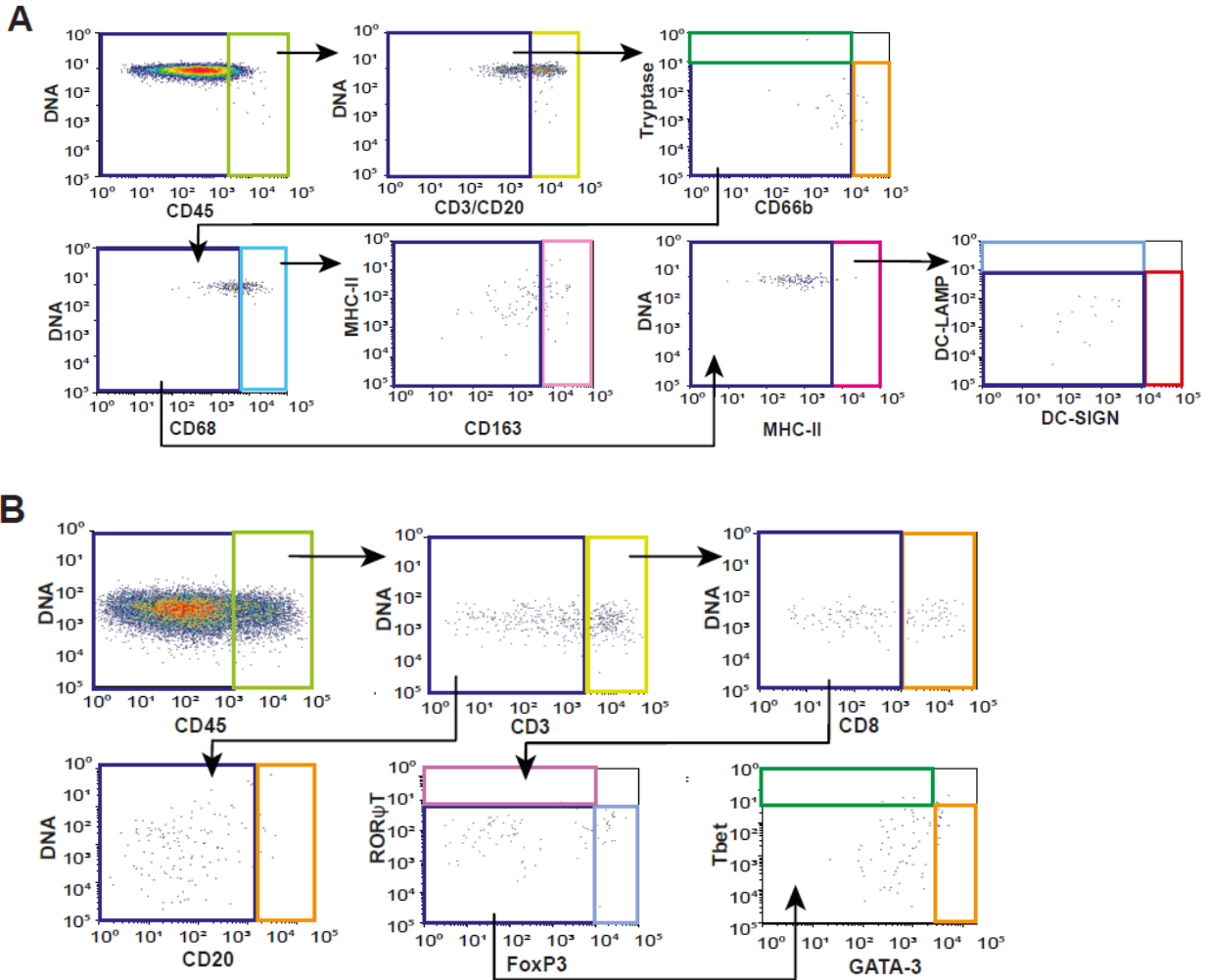
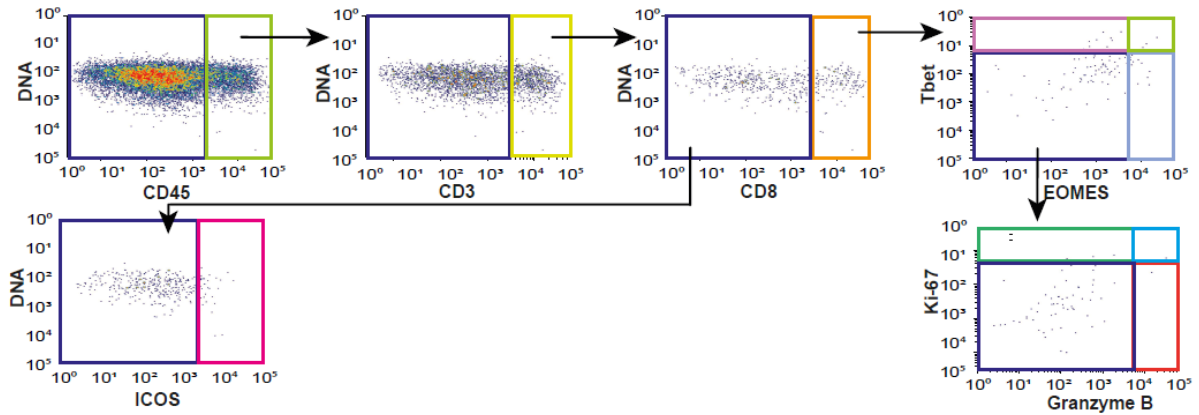


SUPPLEMENTAL FIGURES

Figure S1. Hierarchical Image Cytometry Gating Strategies Using Multiplex Immunohistochemistry for Quantification of Immune Cell Populations. (A) myeloid antibody panel, (B) lymphoid antibody panel, and (C) functional antibody panel gating strategies. (D) Immune cell populations identified via gating strategies shown.



C



D

Lineage	Identification
Th1 helper T cells	CD45 ⁺ CD3 ⁺ CD8 ⁺ Tbet ⁺
Th2 helper T cells	CD45 ⁺ CD3 ⁺ CD4 ⁺ CD8 ⁻ GATA3 ⁺
Regulatory T cells (Treg)	CD45 ⁺ CD3 ⁺ CD4 ⁺ CD8 ⁻ Foxp3 ⁺
Th17 helper T cells	CD45 ⁺ CD3 ⁺ CD4 ⁺ CD8 ⁻ RORγt ⁺
Th0 (naïve) helper T cells	CD45 ⁺ CD3 ⁺ CD4 ⁺ CD8 ⁻ Foxp3 ⁻ RORγt ⁻ Tbet ⁻ GATA3 ⁻
CD8 ⁺ T lymphocytes	CD45 ⁺ CD3 ⁺ CD8 ⁺
CD20 ⁺ B cells	CD45 ⁺ CD3 ⁻ CD20 ⁺
Granulocytes	CD45 ⁺ CD3/CD20 ⁻ CD66b ⁺
Mast cells	CD45 ⁺ CD3/CD20 ⁻ CD66b ⁻ Tryptase ⁺
Macrophages+Monocytes	CD45 ⁺ CD3/CD20 ⁻ CD66b ⁻ Tryptase ⁻ CD68 ⁺ CD163 ^{+/-}
Immature DC	CD45 ⁺ CD3/CD20 ⁻ CD66b ⁻ Tryptase ⁻ CD68 ⁻ MHC-II ⁺ DC-LAMP ⁻ DC-SIGN ^{-/+}
Mature DC	CD45 ⁺ CD3/CD20 ⁻ CD66b ⁻ Tryptase ⁻ CD68 ⁺ MHC-II ⁺ DC-LAMP ⁺
CD45 ⁺ other	CD45 ⁺ CD3/CD20 ⁻ CD66b ⁻ Tryptase ⁻ CD68 ⁻ MHC-II ⁻
Proliferation	Ki67
Cytotoxicity	Granzyme B
Immune functionality	EOMES, Tbet, ICOS