

Supplementary materials. Details of numbers of individual analyses, and participants and responses included.

| Outcome: | Analyses | Waves included | Participant inclusion criteria | Number of responses, from individual participants included in analyses |
|---|--|--|--|--|
| Identification of COVID-19 symptoms | GEEs using an exchangeable correlation structure | 26 May 2020 to 27 January 2021 (waves 18 to 42), excluding data collected 26 to 28 October 2020 (wave 31)* | All participants | 48,168 responses, from 34,752 participants |
| Full-self-isolation when symptomatic, duration adjusted | GEEs using an exchangeable correlation structure | 26 October 2020 to 27 January 2021 (waves 31 to 42), excluding data collected 26 to 28 October 2020 (wave 31)* | Only those reporting cardinal COVID-19 symptoms† in the last seven days, excluding those with a negative COVID-19 test | 1102 responses, from 1066 participants |
| Full self-isolation when symptomatic | GEEs using an exchangeable correlation structure | 14 April 2020 to 27 January 2021 (waves 12 to 42), excluding data collected 26 to 28 October 2020 (wave 31)* | Only those reporting cardinal COVID-19 symptoms† in the last seven days, excluding those with a negative COVID-19 test | 3397 responses, from 2967 participants |
| Requesting a test when symptomatic | GEEs using an exchangeable correlation structure | 26 May 2020 to 27 January 2021 (waves 18 to 42), excluding data collected 26 to 28 October 2020 (wave 31)* | Only those reporting cardinal COVID-19 symptoms† in the last seven days | 2920 responses, from 2612 participants |
| Sharing details of close contacts | GEEs using an exchangeable correlation structure | 1 June 2020 to 27 January 2021 (waves 19 to 42), excluding data collected 26 to 28 October 2020 (wave 31)* | Participants who had not reported cardinal COVID-19 symptoms† in the last seven days | 43,437 responses, from 31,799 participants |

* Due to an error in collecting data about chronic illness on 26 to 28 October 2020 (wave 31), these data were excluded from analyses

† High temperature / fever, cough, or loss or change of sense of smell or taste

Supplementary materials. Excluding people who tested negative for covid-19 from self-isolation analyses

We used data from different questions to identify participants who tested negative for covid-19. In data collected between 1 June and 5 August 2020 (waves 19 to 26), participants who reported they had requested a test after developing covid-19 symptoms were asked to indicate their test result or if they were still waiting for results. In data collected from 7 December 2020 (wave 36 onwards), all participants were asked if they had been tested for covid-19 in the last seven days, and if so, what the results of their test were. In data collected from 11 January 2021 (wave 41 onwards), having received a negative test was included in the list of reasons why you had left home since developing symptoms (only shown to participants who reported having covid-19 symptoms and who reported having requested a test). In all waves, participants with covid-19 symptoms could specify “other” reasons for having left home.

Supplementary materials. Coding of variable indicating that the highest earner in the household is a manual worker and socio-economic grade

| Which of the following best describes the occupation of the member of your household with the largest income (the chief income earner)? Please select one answer | Highest earner in the household is a manual worker | Socio-economic grade |
|--|--|----------------------|
| Please indicate to which occupational group the Chief Income Earner in your household belongs, or which group fits best. The Chief Income Earner is the person in your household with the largest income. If the Chief Income Earner is retired and has an occupational pension please answer for their most recent occupation. If the Chief Income Earner is not in paid employment but has been out of work for less than 6 months, please answer for their most recent occupation | | |
| Semi or unskilled manual work (e.g. Manual workers, all apprentices to skilled trades, Caretaker, Park keeper, non-HGV driver, shop assistant) | Yes | C2DE |
| Skilled manual worker (e.g. Skilled Bricklayer, Carpenter, Plumber, Painter, Bus/ Ambulance Driver, HGV driver, AA patrolman, pub/bar worker, etc.) | Yes | C2DE |
| Supervisory or clerical/ junior managerial/ professional/administrative (e.g. Office worker, Student Doctor, Foreman with 25+ employees, salesperson, etc.) | No | ABC1 |
| Intermediate managerial/ professional/ administrative (e.g. Newly qualified (under 3 years) doctor, Solicitor, Board director small organisation, middle manager in large organisation, principle officer in civil service/local government) | No | ABC1 |
| Higher managerial/ professional/ administrative (e.g. Established doctor, Solicitor, Board Director in a large organisation (200+ employees, top level civil servant/public service employee) | No | ABC1 |
| Student | No | ABC1 |
| Casual worker – not in permanent employment | No | C2DE |
| Housewife/ Homemaker | No | C2DE |
| Retired and living on state pension | No | C2DE |
| Unemployed or not working due to long-term sickness | No | C2DE |
| Full-time carer of another household member | No | C2DE |
| Other | Missing | Missing |

Supplementary materials. Endorsement of common symptoms of COVID-19

| Can you tell us what you think the most common symptoms of coronavirus are? Please select up to 5 | 26 May 2020 to 27 January 2021, n [†] | % | 25 to 27 January 2021, n [‡] | % |
|---|--|------|---------------------------------------|------|
| Cough | 37,336 | 73.8 | 1516 | 75.5 |
| High temperature / fever | 36,560 | 72.2 | 1383 | 68.9 |
| Loss of sense of smell | 33,280 | 65.7 | 1424 | 71.0 |
| Loss of taste | 32,211 | 63.6 | 1422 | 70.9 |
| Shortness of breath / difficulty breathing | 27,064 | 53.5 | 1142 | 56.9 |
| Flu-like symptoms | 14,351 | 28.4 | 483 | 24.1 |
| Sore throat | 8,126 | 16.1 | 275 | 13.7 |
| Feeling tired or having low energy | 7,986 | 15.8 | 325 | 16.2 |
| Headaches | 5,028 | 9.9 | 214 | 10.7 |
| Loss of appetite | 4,086 | 8.1 | 164 | 8.2 |
| Aches and pains | 2,855 | 5.6 | 123 | 6.1 |
| Chest pain | 2,516 | 5.0 | 86 | 4.3 |
| Sneezing | 2,382 | 4.7 | 53 | 2.6 |
| Chills / shivering | 2,225 | 4.4 | 98 | 4.9 |
| Nausea / feeling sick | 1,550 | 3.1 | 73 | 3.6 |
| Diarrhoea | 1,482 | 2.9 | 51 | 2.5 |
| Runny nose | 1,449 | 2.9 | 45 | 2.2 |
| Pain in your arms, legs or joints | 1,126 | 2.2 | 42 | 2.1 |
| Blocked nose | 870 | 1.7 | 39 | 1.9 |
| Dizziness | 879 | 1.7 | 38 | 1.9 |
| Vomiting | 787 | 1.6 | 36 | 1.8 |
| Feeling your heart pound or race | 598 | 1.2 | 23 | 1.1 |
| Stomach ache | 538 | 1.1 | 21 | 1.0 |
| Trouble sleeping | 516 | 1.0 | 16 | 0.8 |
| Back pain | 511 | 1.0 | 21 | 1.0 |
| Fainting spells | 440 | 0.9 | 23 | 1.1 |
| Don't know (single code) | 1,189 | 2.3 | 33 | 1.6 |

[†] Baseline n=50,617.

[‡] Baseline n=2,007.

Supplementary materials. Lowess plots showing associations between outcomes and age.

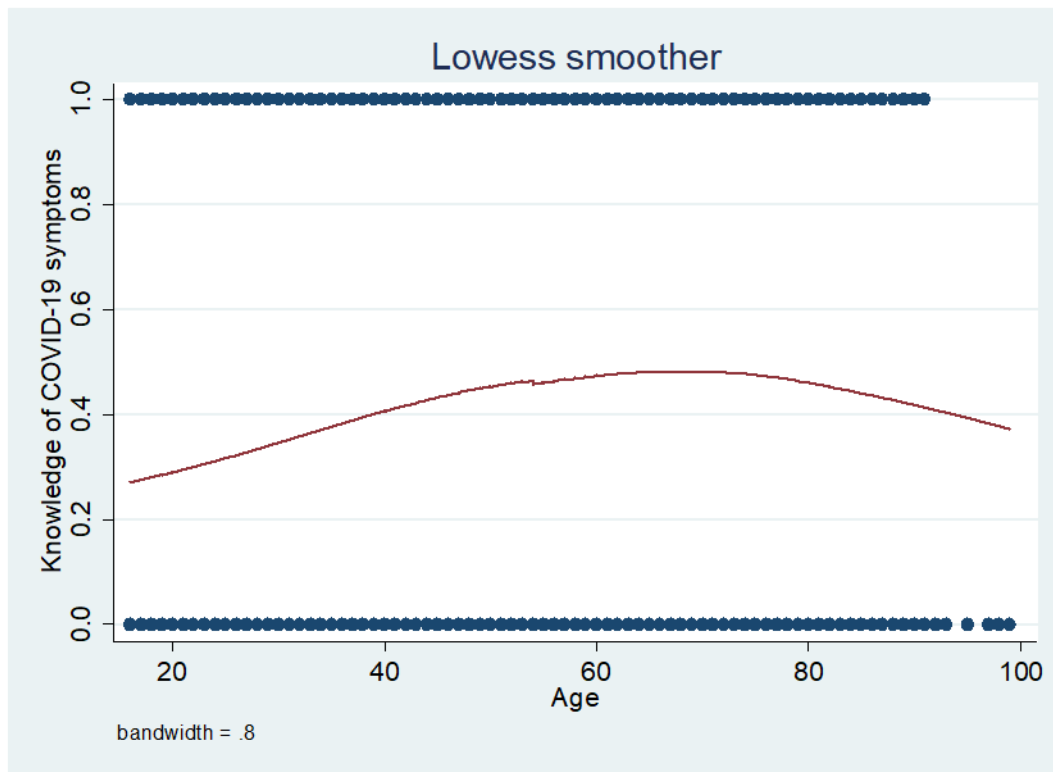


Figure 1. Symptom identification and age.

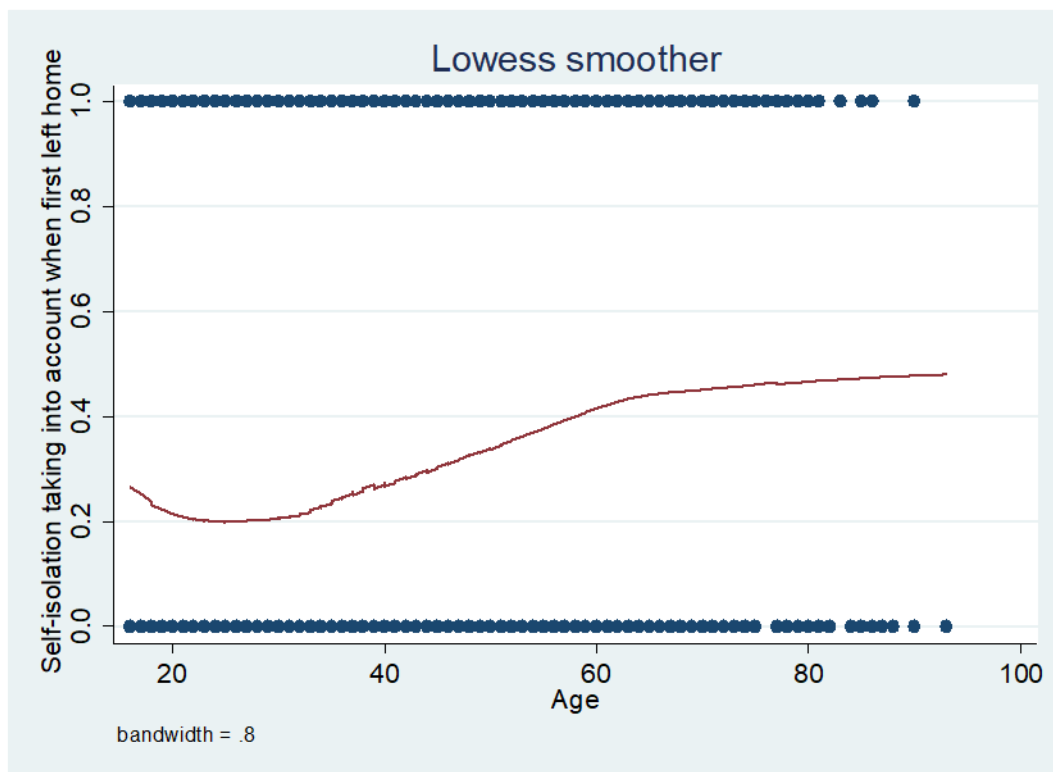


Figure 2. Full self-isolation accounting for duration of isolation and age.

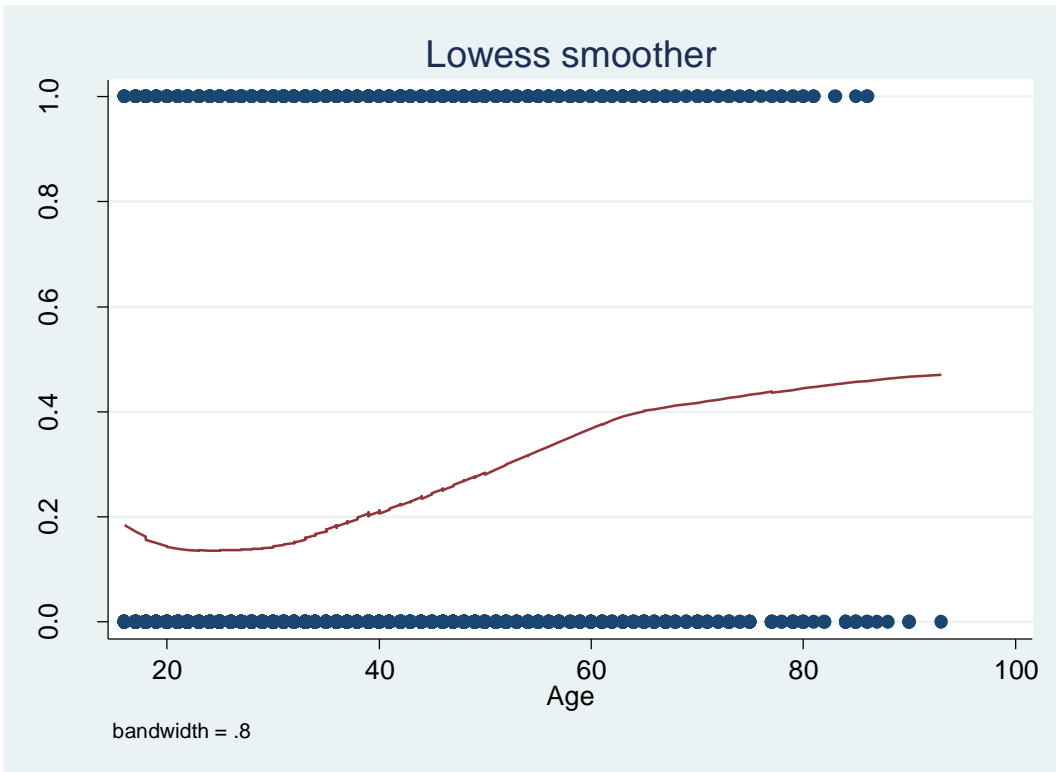


Figure 3. Full self-isolation and age.

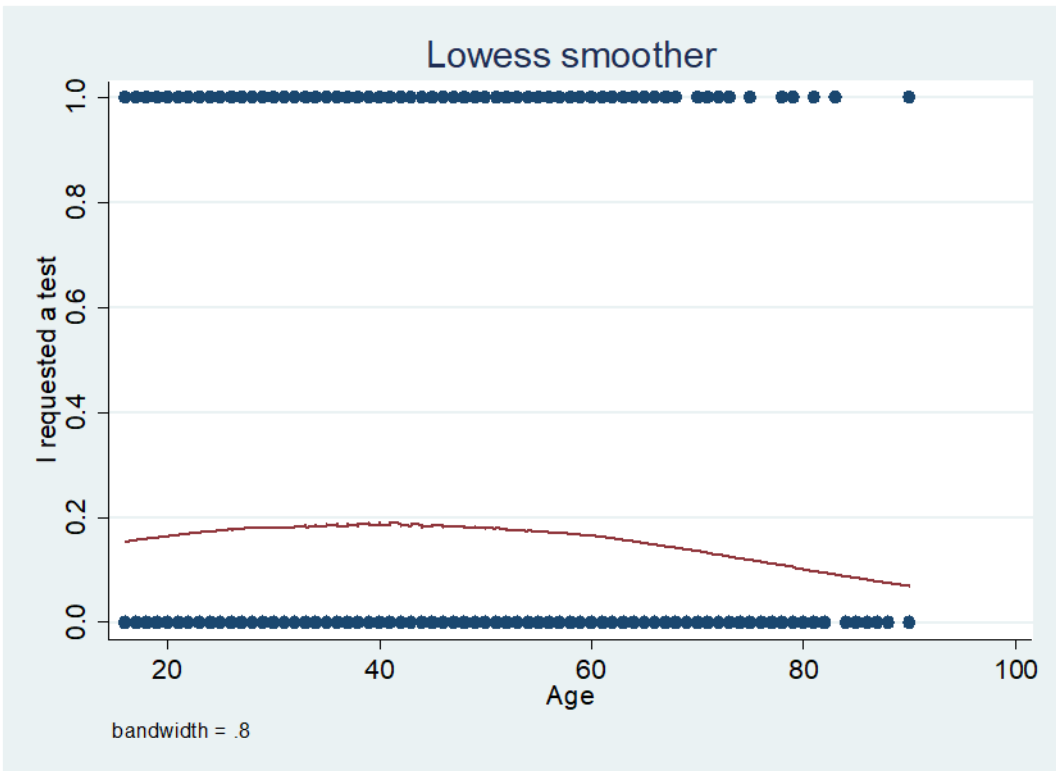


Figure 4. Requesting a test after developing symptoms of covid-19 and age.

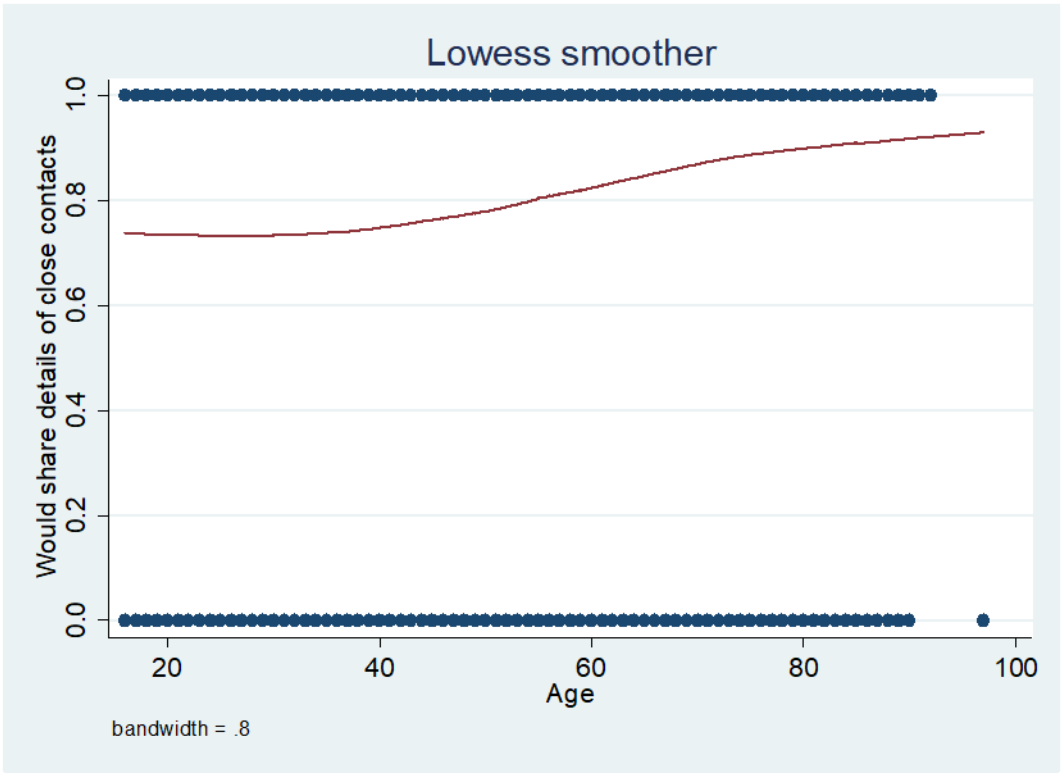


Figure 5. Intention to share details of your close contacts with the NHS contact tracing service and age.

Supplementary materials. Associations between outcomes and survey wave and region.

Table 1. Symptom identification and associations with survey wave and region. Bolding indicates findings significant at a $p < 0.001$.

| Participant characteristics | Level | Did not identify cough, high temperature / fever, and loss of sense of smell or taste n=23,440 | Identified cough, high temperature / fever, and loss of sense of smell or taste n=24,728 | Odds ratio (95% CI) for correctly identifying symptoms | p-value | Adjusted odds ratio (95% CI) for correctly identifying symptoms* | p-value | Adjusted odds ratio (95% CI) for correctly identifying symptoms† | p-value |
|-----------------------------|--|---|---|--|------------------|--|------------------|--|------------------|
| Survey wave | 26 to 27 May 2020 (wave 18) | 1033 (52.2) | 947 (47.8) | Reference | - | Reference | - | Reference | - |
| | 1 to 3 June 2020 (wave 19) | 970 (49.0) | 1009 (51.0) | 1.06 (0.94 to 1.19) | 0.33 | 1.05 (0.93 to 1.19) | 0.44 | 1.05 (0.93 to 1.19) | 0.39 |
| | 8 to 10 June 2020 (wave 20) | 968 (49.0) | 1009 (51.0) | 1.03 (0.92 to 1.16) | 0.57 | 1.02 (0.90 to 1.16) | 0.75 | 1.02 (0.90 to 1.16) | 0.74 |
| | 15 to 17 June 2020 (wave 21) | 1014 (51.0) | 974 (49.0) | 0.92 (0.82 to 1.03) | 0.16 | 0.92 (0.81 to 1.04) | 0.19 | 0.93 (0.82 to 1.05) | 0.22 |
| | 22 to 24 June 2020 (wave 22) | 1016 (51.2) | 970 (48.8) | 0.94 (0.83 to 1.06) | 0.28 | 0.92 (0.81 to 1.05) | 0.22 | 0.93 (0.81 to 1.05) | 0.24 |
| | 29 June to 1 July 2020 (wave 23) | 1009 (50.9) | 972 (49.1) | 0.95 (0.85 to 1.07) | 0.40 | 0.92 (0.81 to 1.04) | 0.16 | 0.92 (0.81 to 1.04) | 0.18 |
| | 6 to 8 July 2020 (wave 24) | 1060 (53.2) | 934 (46.8) | 0.86 (0.77 to 0.97) | 0.01 | 0.84 (0.74 to 0.95) | 0.01 | 0.84 (0.75 to 0.95) | 0.01 |
| | 20 to 22 July 2020 (wave 25) | 1035 (51.7) | 967 (48.3) | 0.93 (0.83 to 1.05) | 0.24 | 0.94 (0.83 to 1.07) | 0.36 | 0.95 (0.84 to 1.07) | 0.39 |
| | 3 to 5 August 2020 (wave 26) | 1004 (50.5) | 987 (49.5) | 0.93 (0.83 to 1.05) | 0.24 | 0.95 (0.84 to 1.08) | 0.42 | 0.95 (0.84 to 1.08) | 0.45 |
| | 1 to 2 September 2020 (wave 27) | 1058 (52.6) | 954 (47.4) | 0.89 (0.79 to 1.01) | 0.06 | 0.88 (0.77 to 1.00) | 0.05 | 0.89 (0.78 to 1.01) | 0.06 |
| | 14 to 16 September 2020 (wave 28) | 975 (49.2) | 1005 (50.8) | 1.00 (0.89 to 1.12) | 0.96 | 0.98 (0.87 to 1.12) | 0.81 | 0.99 (0.87 to 1.12) | 0.86 |
| | 28 to 30 September 2020 (wave 29) | 903 (44.4) | 1130 (55.6) | 1.19 (1.06 to 1.34) | 0.004 | 1.17 (1.03 to 1.33) | 0.01 | 1.18 (1.04 to 1.34) | 0.01 |
| | 12 to 14 October 2020 (wave 30) | 932 (45.2) | 1131 (54.8) | 1.16 (1.03 to 1.30) | 0.02 | 1.11 (0.98 to 1.26) | 0.11 | 1.12 (0.99 to 1.27) | 0.08 |
| | 9 to 11 November 2020 (wave 32) | 925 (45.8) | 1096 (54.2) | 1.13 (1.00 to 1.27) | 0.05 | 1.12 (0.98 to 1.27) | 0.09 | 1.12 (0.99 to 1.27) | 0.08 |
| | 16 to 18 November 2020 (wave 33) | 972 (47.5) | 1074 (52.5) | 1.08 (0.96 to 1.21) | 0.22 | 1.06 (0.94 to 1.21) | 0.35 | 1.07 (0.94 to 1.22) | 0.29 |
| | 23 to 25 November 2020 (wave 34) | 957 (47.6) | 1055 (52.4) | 1.03 (0.92 to 1.16) | 0.57 | 0.99 (0.87 to 1.12) | 0.85 | 0.99 (0.87 to 1.13) | 0.90 |
| | 30 November to 2 December 2020 (wave 35) | 979 (47.9) | 1063 (52.1) | 1.05 (0.94 to 1.19) | 0.37 | 1.08 (0.95 to 1.22) | 0.23 | 1.08 (0.95 to 1.23) | 0.22 |
| | 7 to 9 December 2020 (wave 36) | 963 (46.0) | 1130 (54.0) | 1.12 (1.00 to 1.26) | 0.05 | 1.08 (0.95 to 1.22) | 0.25 | 1.08 (0.96 to 1.23) | 0.21 |
| | 14 to 16 December 2020 (wave 37) | 945 (46.9) | 1071 (53.1) | 1.08 (0.96 to 1.21) | 0.21 | 1.05 (0.92 to 1.18) | 0.49 | 1.05 (0.93 to 1.19) | 0.45 |
| | 21 to 23 December 2020 (wave 38) | 950 (47.2) | 1061 (52.8) | 1.05 (0.94 to 1.18) | 0.40 | 1.03 (0.91 to 1.17) | 0.61 | 1.04 (0.92 to 1.18) | 0.56 |
| | 28 to 30 December 2020 (wave 39) | 914 (46.8) | 1037 (53.2) | 1.10 (0.98 to 1.24) | 0.12 | 1.03 (0.91 to 1.17) | 0.62 | 1.04 (0.91 to 1.18) | 0.58 |
| | 4 to 6 January 2021 (wave 40) | 918 (45.6) | 1094 (54.4) | 1.13 (1.00 to 1.27) | 0.05 | 1.14 (1.01 to 1.30) | 0.04 | 1.15 (1.01 to 1.31) | 0.04 |
| | 11 to 13 January 2021 (wave 41) | 953 (47.7) | 1044 (52.3) | 1.05 (0.93 to 1.18) | 0.42 | 1.01 (0.89 to 1.15) | 0.87 | 1.01 (0.89 to 1.15) | 0.83 |
| | 25 to 27 January 2021 (wave 42) | 987 (49.3) | 1014 (50.7) | 0.96 (0.86 to 1.09) | 0.55 | 0.95 (0.84 to 1.08) | 0.42 | 0.95 (0.84 to 1.08) | 0.47 |
| Region | East Midlands | 1774 (46.6) | 2036 (53.4) | Reference | - | Reference | - | | |
| | East of England | 2095 (45.0) | 2556 (55.0) | 1.03 (0.94 to 1.13) | 0.55 | 1.00 (0.91 to 1.11) | 0.94 | 1.01 (0.91 to 1.12) | 0.84 |
| | London | 3440 (58.2) | 2467 (41.8) | 0.60 (0.55 to 0.65) | <0.001 | 0.77 (0.70 to 0.85) | <0.001 | 0.76 (0.69 to 0.84) | <0.001 |
| | North East | 1028 (47.2) | 1151 (52.8) | 0.95 (0.85 to 1.07) | 0.41 | 0.97 (0.86 to 1.10) | 0.63 | 0.97 (0.86 to 1.10) | 0.65 |
| | North West | 2757 (50.8) | 2669 (49.2) | 0.83 (0.76 to 0.91) | <0.001 | 0.86 (0.78 to 0.95) | 0.003 | 0.86 (0.78 to 0.95) | 0.002 |
| | Northern Ireland | 394 (45.4) | 474 (54.6) | 1.05 (0.89 to 1.23) | 0.58 | 1.06 (0.89 to 1.25) | 0.53 | 1.05 (0.89 to 1.25) | 0.54 |

| | | | | | | | | |
|--------------------------|-------------|-------------|---------------------|-------|---------------------|------|---------------------|------|
| Scotland | 1752 (46.9) | 1985 (53.1) | 0.96 (0.87 to 1.06) | 0.38 | 0.95 (0.85 to 1.05) | 0.32 | 0.95 (0.85 to 1.05) | 0.31 |
| South East | 2929 (45.7) | 3480 (54.3) | 1.01 (0.92 to 1.10) | 0.83 | 0.98 (0.90 to 1.08) | 0.71 | 0.98 (0.90 to 1.08) | 0.71 |
| South West | 1928 (46.3) | 2232 (53.7) | 0.97 (0.88 to 1.07) | 0.59 | 0.94 (0.85 to 1.04) | 0.26 | 0.94 (0.85 to 1.04) | 0.25 |
| Wales | 1079 (45.6) | 1286 (54.4) | 0.99 (0.89 to 1.11) | 0.93 | 0.95 (0.84 to 1.07) | 0.41 | 0.95 (0.85 to 1.07) | 0.43 |
| West Midlands | 2122 (49.7) | 2147 (50.3) | 0.86 (0.78 to 0.95) | 0.002 | 0.95 (0.86 to 1.05) | 0.32 | 0.95 (0.86 to 1.05) | 0.31 |
| Yorkshire and the Humber | 2142 (48.8) | 2245 (51.2) | 0.88 (0.80 to 0.97) | 0.009 | 0.90 (0.81 to 0.99) | 0.03 | 0.89 (0.81 to 0.99) | 0.03 |

* Adjusting for survey wave, region, sex, age (raw and quadratic term), dependent child in the household, being clinically vulnerable to COVID-19, having a household member with a chronic illness, employment status, highest earner works in a manual occupation, index of multiple deprivation, highest educational or professional qualification, ethnicity, and living alone.

† Adjusting for survey wave, region, sex, age (raw and quadratic term), dependent child in the household, being clinically vulnerable to COVID-19, having a household member with a chronic illness, employment status, socioeconomic grade, index of multiple deprivation, highest educational or professional qualification, ethnicity, and living alone.

Table 2. Full self-isolation after developing symptoms of COVID-19 accounting for duration of isolation and associations with survey wave and region. Bolding indicates findings significant at a $p < 0.001$.

| Participant characteristics | Level | Did not fully self-isolate n=648 | Fully self-isolated n=454 | Odds ratio (95% CI) for fully self-isolating | p-value | Adjusted odds ratio (95% CI) for fully self-isolating * | p-value | Adjusted odds ratio (95% CI) for fully self-isolating † | p-value |
|-------------------------------------|--|-------------------------------------|------------------------------|---|-----------|--|-----------|---|-----------|
| Survey wave | 9 to 11 November 2020 (wave 32) | 78 (61.9) | 48 (38.1) | Reference | - | Reference | - | Reference | - |
| | 16 to 18 November 2020 (wave 33) | 71 (55.5) | 57 (44.5) | 1.35 (0.82 to 2.23) | 0.24 | 1.29 (0.74 to 2.24) | 0.37 | 1.28 (0.74 to 2.24) | 0.38 |
| | 23 to 25 November 2020 (wave 34) | 66 (58.9) | 46 (41.1) | 1.16 (0.69 to 1.96) | 0.57 | 1.07 (0.60 to 1.90) | 0.82 | 1.07 (0.60 to 1.91) | 0.82 |
| | 30 November to 2 December 2020 (wave 35) | 76 (63.9) | 43 (36.1) | 0.94 (0.56 to 1.59) | 0.83 | 0.77 (0.42 to 1.40) | 0.39 | 0.77 (0.43 to 1.40) | 0.40 |
| | 7 to 9 December 2020 (wave 36) | 45 (51.1) | 43 (48.9) | 1.59 (0.91 to 2.76) | 0.10 | 1.34 (0.73 to 2.44) | 0.35 | 1.33 (0.73 to 2.43) | 0.35 |
| | 14 to 16 December 2020 (wave 37) | 59 (66.3) | 30 (33.7) | 0.90 (0.51 to 1.59) | 0.72 | 0.74 (0.40 to 1.34) | 0.32 | 0.74 (0.40 to 1.34) | 0.32 |
| | 21 to 23 December 2020 (wave 38) | 62 (67.4) | 30 (32.6) | 0.82 (0.47 to 1.44) | 0.49 | 0.69 (0.37 to 1.29) | 0.25 | 0.69 (0.37 to 1.29) | 0.24 |
| | 28 to 30 December 2020 (wave 39) | 48 (58.5) | 34 (41.5) | 1.19 (0.67 to 2.11) | 0.55 | 1.05 (0.56 to 1.98) | 0.87 | 1.06 (0.56 to 1.98) | 0.87 |
| | 4 to 6 January 2021 (wave 40) | 55 (52.9) | 49 (47.1) | 1.50 (0.88 to 2.53) | 0.13 | 1.44 (0.80 to 2.57) | 0.22 | 1.43 (0.80 to 2.57) | 0.23 |
| | 11 to 13 January 2021 (wave 41) | 48 (60.8) | 31 (39.2) | 1.12 (0.63 to 2.00) | 0.71 | 0.87 (0.47 to 1.61) | 0.66 | 0.87 (0.47 to 1.62) | 0.66 |
| | 25 to 27 January 2021 (wave 42) | 40 (48.2) | 43 (51.8) | 1.77 (1.02 to 3.06) | 0.04 | 1.76 (0.96 to 3.21) | 0.07 | 1.76 (0.97 to 3.21) | 0.06 |
| | Region | East Midlands | 41 (53.2) | 36 (46.8) | Reference | - | Reference | - | Reference |
| East of England | | 53 (58.2) | 38 (41.8) | 0.84 (0.45 to 1.56) | 0.58 | 0.86 (0.44 to 1.70) | 0.67 | 0.87 (0.44 to 1.71) | 0.68 |
| London | | 134 (62.0) | 82 (38.0) | 0.71 (0.42 to 1.22) | 0.22 | 0.79 (0.43 to 1.45) | 0.45 | 0.79 (0.43 to 1.45) | 0.45 |
| North (East and West) | | 103 (57.5) | 76 (42.5) | 0.87 (0.51 to 1.51) | 0.63 | 1.03 (0.56 to 1.87) | 0.93 | 1.03 (0.56 to 1.87) | 0.93 |
| Northern Ireland / Scotland / Wales | | 72 (57.1) | 54 (42.9) | 0.91 (0.51 to 1.62) | 0.75 | 0.93 (0.49 to 1.77) | 0.82 | 0.93 (0.49 to 1.77) | 0.82 |
| South East | | 72 (58.5) | 51 (41.5) | 0.83 (0.46 to 1.49) | 0.53 | 0.90 (0.47 to 1.75) | 0.76 | 0.90 (0.47 to 1.75) | 0.76 |
| South West | | 52 (59.8) | 35 (40.2) | 0.82 (0.44 to 1.55) | 0.54 | 0.69 (0.34 to 1.37) | 0.29 | 0.68 (0.34 to 1.37) | 0.29 |
| West Midlands | | 59 (57.8) | 43 (42.2) | 0.86 (0.47 to 1.57) | 0.63 | 0.86 (0.45 to 1.66) | 0.66 | 0.86 (0.45 to 1.66) | 0.66 |
| Yorkshire and the Humber | | 62 (61.4) | 39 (38.6) | 0.74 (0.40 to 1.36) | 0.33 | 0.77 (0.39 to 1.51) | 0.44 | 0.77 (0.39 to 1.51) | 0.44 |

* Adjusting for survey wave, region, sex, age (raw and quadratic), dependent child in the household, being clinically vulnerable to COVID-19, having a household member with a chronic illness, employment status, highest earner is a manual worker, index of multiple deprivation, highest educational or professional qualification, ethnicity, and living alone.

† Adjusting for survey wave, region, sex, age (raw and quadratic), dependent child in the household, being clinically vulnerable to COVID-19, having a household member with a chronic illness, employment status, socioeconomic grade, index of multiple deprivation, highest educational or professional qualification, ethnicity, and living alone.

Table 3. Full self-isolation after developing symptoms of COVID-19 and associations with survey wave and region. Bolding indicates findings significant at a $p < 0.001$.

| Participant characteristics | Level | Did not fully self-isolate n=2,717 | Fully self-isolated n=680 | Odds ratio (95% CI) for fully self-isolating | p-value | Adjusted odds ratio (95% CI) for fully self-isolating * | p-value | Adjusted odds ratio (95% CI) for fully self-isolating † | p-value |
|-----------------------------|--|---------------------------------------|------------------------------|---|---------|---|---------|---|---------|
| Survey wave | 14 to 15 April 2020 (wave 12) | 101 (80.8) | 24 (19.2) | Reference | - | Reference | - | Reference | - |
| | 20 to 22 April 2020 (wave 13) | 112 (83.0) | 23 (17.0) | 0.89 (0.50 to 1.56) | 0.68 | 1.34 (0.73 to 2.46) | 0.35 | 1.34 (0.73 to 2.45) | 0.34 |
| | 27 to 29 April (wave 14) | 82 (80.4) | 20 (19.6) | 1.00 (0.54 to 1.83) | 1.00 | 1.40 (0.70 to 2.78) | 0.34 | 1.39 (0.70 to 2.75) | 0.35 |
| | 4 to 6 May 2020 (wave 15) | 88 (81.5) | 20 (18.5) | 0.94 (0.51 to 1.74) | 0.85 | 0.96 (0.48 to 1.93) | 0.90 | 0.96 (0.48 to 1.93) | 0.91 |
| | 11 to 13 May (wave 16) | 102 (84.3) | 19 (15.7) | 0.85 (0.48 to 1.52) | 0.59 | 1.05 (0.56 to 1.96) | 0.89 | 1.06 (0.57 to 1.98) | 0.85 |
| | 18 to 20 May 2020 (wave 17) | 79 (72.5) | 30 (27.5) | 1.42 (0.81 to 2.49) | 0.22 | 1.17 (0.61 to 2.22) | 0.64 | 1.18 (0.62 to 2.23) | 0.62 |
| | 26 to 27 May 2020 (wave 18) | 133 (78.7) | 36 (21.3) | 1.13 (0.67 to 1.90) | 0.65 | 1.11 (0.62 to 2.01) | 0.72 | 1.11 (0.62 to 2.00) | 0.73 |
| | 1 to 3 June 2020 (wave 19) | 97 (74.0) | 34 (26.0) | 1.37 (0.79 to 2.36) | 0.26 | 1.53 (0.84 to 2.80) | 0.17 | 1.52 (0.83 to 2.78) | 0.17 |
| | 8 to 10 June 2020 (wave 20) | 103 (79.8) | 26 (20.2) | 0.98 (0.55 to 1.72) | 0.93 | 0.77 (0.40 to 1.46) | 0.42 | 0.77 (0.40 to 1.45) | 0.41 |
| | 15 to 17 June 2020 (wave 21) | 101 (86.3) | 16 (13.7) | 0.64 (0.35 to 1.17) | 0.15 | 0.64 (0.32 to 1.29) | 0.21 | 0.64 (0.32 to 1.28) | 0.21 |
| | 22 to 24 June 2020 (wave 22) | 112 (88.2) | 15 (11.8) | 0.53 (0.27 to 1.02) | 0.06 | 0.51 (0.25 to 1.04) | 0.07 | 0.51 (0.25 to 1.04) | 0.06 |
| | 29 June to 1 July 2020 (wave 23) | 90 (80.4) | 22 (19.6) | 1.03 (0.58 to 1.82) | 0.93 | 1.05 (0.56 to 1.97) | 0.89 | 1.05 (0.56 to 1.98) | 0.87 |
| | 6 to 8 July 2020 (wave 24) | 92 (83.6) | 18 (16.4) | 0.94 (0.53 to 1.68) | 0.84 | 1.07 (0.55 to 2.06) | 0.85 | 1.10 (0.58 to 2.11) | 0.77 |
| | 20 to 22 July 2020 (wave 25) | 105 (85.4) | 18 (14.6) | 0.70 (0.38 to 1.27) | 0.24 | 0.61 (0.31 to 1.19) | 0.15 | 0.61 (0.31 to 1.18) | 0.14 |
| | 3 to 5 August 2020 (wave 26) | 85 (84.2) | 16 (15.8) | 0.69 (0.35 to 1.35) | 0.28 | 0.70 (0.33 to 1.49) | 0.36 | 0.70 (0.33 to 1.50) | 0.36 |
| | 1 to 2 September 2020 (wave 27) | 109 (81.3) | 25 (18.7) | 0.91 (0.50 to 1.64) | 0.75 | 0.79 (0.40 to 1.58) | 0.51 | 0.81 (0.40 to 1.61) | 0.54 |
| | 14 to 16 September 2020 (wave 28) | 102 (85.7) | 17 (14.3) | 0.64 (0.34 to 1.23) | 0.18 | 0.47 (0.23 to 0.96) | 0.04 | 0.49 (0.24 to 0.99) | 0.05 |
| | 28 to 30 September 2020 (wave 29) | 101 (87.8) | 14 (12.2) | 0.55 (0.28 to 1.07) | 0.08 | 0.51 (0.24 to 1.09) | 0.08 | 0.52 (0.25 to 1.11) | 0.09 |
| | 12 to 14 October 2020 (wave 30) | 79 (73.1) | 29 (26.9) | 1.29 (0.71 to 2.33) | 0.40 | 1.12 (0.59 to 2.12) | 0.74 | 1.13 (0.59 to 2.14) | 0.72 |
| | 9 to 11 November 2020 (wave 32) | 103 (81.7) | 23 (18.3) | 0.88 (0.48 to 1.60) | 0.67 | 0.76 (0.39 to 1.48) | 0.42 | 0.76 (0.39 to 1.48) | 0.42 |
| | 16 to 18 November 2020 (wave 33) | 99 (77.3) | 29 (22.7) | 1.18 (0.68 to 2.06) | 0.55 | 1.14 (0.60 to 2.18) | 0.69 | 1.15 (0.60 to 2.18) | 0.67 |
| | 23 to 25 November 2020 (wave 34) | 89 (79.5) | 23 (20.5) | 1.03 (0.57 to 1.86) | 0.93 | 0.81 (0.42 to 1.57) | 0.53 | 0.81 (0.42 to 1.59) | 0.55 |
| | 30 November to 2 December 2020 (wave 35) | 105 (88.2) | 14 (11.8) | 0.57 (0.30 to 1.09) | 0.09 | 0.48 (0.23 to 1.00) | 0.05 | 0.49 (0.23 to 1.02) | 0.06 |
| | 7 to 9 December 2020 (wave 36) | 58 (65.9) | 30 (34.1) | 1.97 (1.10 to 3.53) | 0.02 | 1.58 (0.81 to 3.07) | 0.18 | 1.55 (0.80 to 3.01) | 0.19 |
| | 14 to 16 December 2020 (wave 37) | 71 (79.8) | 18 (20.2) | 1.11 (0.59 to 2.08) | 0.75 | 0.93 (0.47 to 1.83) | 0.83 | 0.93 (0.47 to 1.82) | 0.83 |
| | 21 to 23 December 2020 (wave 38) | 72 (78.3) | 20 (21.7) | 1.06 (0.56 to 2.01) | 0.87 | 1.03 (0.49 to 2.15) | 0.94 | 1.03 (0.49 to 2.16) | 0.94 |
| | 28 to 30 December 2020 (wave 39) | 63 (76.8) | 19 (23.2) | 1.19 (0.62 to 2.31) | 0.60 | 0.90 (0.43 to 1.88) | 0.78 | 0.90 (0.43 to 1.89) | 0.79 |
| | 4 to 6 January 2021 (wave 40) | 71 (68.3) | 33 (31.7) | 1.86 (1.06 to 3.27) | 0.03 | 1.77 (0.93 to 3.37) | 0.08 | 1.76 (0.93 to 3.35) | 0.08 |
| | 11 to 13 January 2021 (wave 41) | 56 (70.9) | 23 (29.1) | 1.60 (0.84 to 3.04) | 0.15 | 1.20 (0.58 to 2.51) | 0.62 | 1.21 (0.58 to 2.52) | 0.62 |

| | 25 to 27 January 2021 (wave 42) | 57 (68.7) | 26 (31.3) | 1.70 (0.91 to 3.16) | 0.10 | 1.85 (0.92 to 3.70) | 0.08 | 1.87 (0.94 to 3.73) | 0.08 |
|--------|---------------------------------|------------|-----------|---------------------|------|---------------------|------|---------------------|------|
| Region | East Midlands | 187 (79.6) | 48 (20.4) | Reference | - | Reference | - | Reference | - |
| | East of England | 219 (80.5) | 53 (19.5) | 0.97 (0.62 to 1.52) | 0.90 | 1.04 (0.62 to 1.73) | 0.88 | 1.07 (0.64 to 1.77) | 0.81 |
| | London | 606 (86.9) | 91 (13.1) | 0.61 (0.41 to 0.91) | 0.01 | 0.93 (0.59 to 1.48) | 0.78 | 0.93 (0.59 to 1.48) | 0.77 |
| | North East | 107 (74.8) | 36 (25.2) | 1.43 (0.86 to 2.37) | 0.17 | 1.52 (0.84 to 2.76) | 0.16 | 1.54 (0.85 to 2.78) | 0.16 |
| | North West | 329 (81.8) | 73 (18.2) | 0.91 (0.60 to 1.37) | 0.64 | 1.11 (0.70 to 1.76) | 0.64 | 1.12 (0.71 to 1.77) | 0.63 |
| | Northern Ireland | 37 (90.2) | 4 (9.8) | 0.46 (0.16 to 1.38) | 0.17 | 0.33 (0.09 to 1.25) | 0.10 | 0.32 (0.09 to 1.22) | 0.09 |
| | Scotland | 166 (74.1) | 58 (25.9) | 1.39 (0.89 to 2.18) | 0.15 | 1.32 (0.78 to 2.23) | 0.30 | 1.33 (0.79 to 2.24) | 0.29 |
| | South East | 273 (73.4) | 99 (26.6) | 1.46 (0.98 to 2.19) | 0.06 | 1.61 (1.00 to 2.57) | 0.05 | 1.61 (1.01 to 2.58) | 0.04 |
| | South West | 181 (77.0) | 54 (23.0) | 1.19 (0.76 to 1.87) | 0.45 | 1.30 (0.77 to 2.18) | 0.32 | 1.30 (0.77 to 2.18) | 0.32 |
| | Wales | 95 (72.0) | 37 (28.0) | 1.72 (1.03 to 2.88) | 0.04 | 1.94 (1.09 to 3.43) | 0.02 | 1.95 (1.11 to 3.45) | 0.02 |
| | West Midlands | 268 (80.5) | 65 (19.5) | 0.99 (0.65 to 1.51) | 0.96 | 1.24 (0.76 to 2.02) | 0.39 | 1.24 (0.76 to 2.01) | 0.39 |
| | Yorkshire and the Humber | 249 (80.1) | 62 (19.9) | 0.94 (0.61 to 1.46) | 0.79 | 1.00 (0.61 to 1.64) | 0.99 | 1.01 (0.61 to 1.66) | 0.97 |

* Adjusting for survey wave, region, sex, age (raw and quadratic), dependent child in the household, being clinically vulnerable to COVID-19, having a household member with a chronic illness, employment status, highest earner is a manual worker, index of multiple deprivation, highest educational or professional qualification, ethnicity and living alone.

† Adjusting for survey wave, region, sex, age (raw and quadratic), dependent child in the household, being clinically vulnerable to COVID-19, having a household member with a chronic illness, employment status, socioeconomic grade, index of multiple deprivation, highest educational or professional qualification, ethnicity and living alone.

Table 4. Requesting a test after developing symptoms of COVID-19 and associations with survey wave and region. Bolding indicates findings significant at a $p < 0.001$.

| Participant characteristics | Level | Did not request a test n=2,402 | Requested a test n=518 | Odds ratio (95% CI) for requesting a test | p-value | Adjusted odds ratio (95% CI) for requesting a test * | p-value | Adjusted odds ratio (95% CI) for requesting a test † | p-value |
|----------------------------------|--|-----------------------------------|-----------------------------|---|-----------------------------|--|-----------------------------|--|------------------|
| Survey wave | 26 to 27 May 2020 (wave 18) | 155 (91.7) | 14 (8.3) | Reference | - | Reference | - | Reference | - |
| | 1 to 3 June 2020 (wave 19) | 125 (86.8) | 19 (13.2) | 1.69 (0.82 to 3.49) | 0.15 | 1.47 (0.69 to 3.12) | 0.32 | 1.47 (0.69 to 3.13) | 0.32 |
| | 8 to 10 June 2020 (wave 20) | 117 (87.3) | 17 (12.7) | 1.61 (0.77 to 3.38) | 0.21 | 1.28 (0.58 to 2.82) | 0.55 | 1.28 (0.58 to 2.83) | 0.54 |
| | 15 to 17 June 2020 (wave 21) | 111 (87.4) | 16 (12.6) | 1.62 (0.77 to 3.42) | 0.20 | 1.75 (0.81 to 3.75) | 0.15 | 1.75 (0.81 to 3.76) | 0.15 |
| | 22 to 24 June 2020 (wave 22) | 116 (87.2) | 17 (12.8) | 1.61 (0.76 to 3.40) | 0.21 | 1.66 (0.78 to 3.55) | 0.19 | 1.66 (0.78 to 3.55) | 0.19 |
| | 29 June to 1 July 2020 (wave 23) | 107 (91.5) | 10 (8.5) | 1.06 (0.46 to 2.43) | 0.90 | 0.85 (0.35 to 2.08) | 0.72 | 0.85 (0.35 to 2.09) | 0.73 |
| | 6 to 8 July 2020 (wave 24) | 105 (89.7) | 12 (10.3) | 1.28 (0.57 to 2.86) | 0.55 | 1.32 (0.57 to 3.03) | 0.51 | 1.33 (0.58 to 3.05) | 0.51 |
| | 20 to 22 July 2020 (wave 25) | 105 (80.8) | 25 (19.2) | 2.63 (1.31 to 5.29) | 0.007 | 2.42 (1.19 to 4.94) | 0.02 | 2.42 (1.19 to 4.94) | 0.01 |
| | 3 to 5 August 2020 (wave 26) | 97 (90.7) | 10 (9.3) | 1.15 (0.49 to 2.68) | 0.75 | 1.00 (0.40 to 2.50) | 0.99 | 1.01 (0.40 to 2.51) | 0.99 |
| | 1 to 2 September 2020 (wave 27) | 117 (87.3) | 17 (12.7) | 1.59 (0.76 to 3.36) | 0.22 | 1.34 (0.60 to 2.99) | 0.48 | 1.34 (0.60 to 3.01) | 0.47 |
| | 14 to 16 September 2020 (wave 28) | 92 (77.3) | 27 (22.7) | 3.24 (1.62 to 6.48) | 0.001 | 3.27 (1.63 to 6.57) | 0.001 | 3.28 (1.63 to 6.61) | 0.001 |
| | 28 to 30 September 2020 (wave 29) | 92 (80.0) | 23 (20.0) | 2.75 (1.35 to 5.60) | 0.005 | 2.65 (1.28 to 5.50) | 0.009 | 2.67 (1.28 to 5.55) | 0.009 |
| | 12 to 14 October 2020 (wave 30) | 80 (74.1) | 28 (25.9) | 3.90 (1.94 to 7.80) | <0.001 | 3.35 (1.62 to 6.90) | 0.001 | 3.36 (1.63 to 6.93) | 0.001 |
| | 9 to 11 November 2020 (wave 32) | 103 (81.7) | 23 (18.3) | 2.49 (1.23 to 5.04) | 0.01 | 2.40 (1.17 to 4.92) | 0.02 | 2.40 (1.17 to 4.93) | 0.02 |
| | 16 to 18 November 2020 (wave 33) | 103 (80.5) | 25 (19.5) | 2.70 (1.34 to 5.42) | 0.005 | 2.74 (1.34 to 5.64) | 0.006 | 2.76 (1.34 to 5.68) | 0.006 |
| | 23 to 25 November 2020 (wave 34) | 89 (79.5) | 23 (20.5) | 2.85 (1.40 to 5.80) | 0.004 | 2.90 (1.39 to 6.02) | 0.004 | 2.91 (1.40 to 6.05) | 0.004 |
| | 30 November to 2 December 2020 (wave 35) | 98 (82.4) | 21 (17.6) | 2.34 (1.14 to 4.82) | 0.02 | 2.39 (1.14 to 5.01) | 0.02 | 2.40 (1.14 to 5.03) | 0.02 |
| | 7 to 9 December 2020 (wave 36) | 88 (78.6) | 24 (21.4) | 3.01 (1.49 to 6.11) | 0.002 | 3.04 (1.49 to 6.18) | 0.002 | 3.05 (1.50 to 6.21) | 0.002 |
| | 14 to 16 December 2020 (wave 37) | 80 (72.7) | 30 (27.3) | 4.12 (2.06 to 8.25) | <0.001 | 3.69 (1.80 to 7.53) | <0.001 | 3.69 (1.81 to 7.56) | <0.001 |
| | 21 to 23 December 2020 (wave 38) | 90 (78.3) | 25 (21.7) | 3.06 (1.52 to 6.17) | 0.002 | 3.01 (1.45 to 6.27) | 0.003 | 3.02 (1.45 to 6.31) | 0.003 |
| 28 to 30 December 2020 (wave 39) | 78 (78.0) | 22 (22.0) | 3.14 (1.53 to 6.44) | 0.002 | 2.83 (1.32 to 6.07) | 0.008 | 2.83 (1.32 to 6.09) | 0.008 | |
| 4 to 6 January 2021 (wave 40) | 78 (66.1) | 40 (33.9) | 5.67 (2.92 to 11.01) | <0.001 | 5.15 (2.57 to 10.35) | <0.001 | 5.16 (2.57 to 10.37) | <0.001 | |
| 11 to 13 January 2021 (wave 41) | 85 (78.0) | 24 (22.0) | 3.14 (1.55 to 6.36) | 0.001 | 3.01 (1.47 to 6.17) | 0.003 | 3.01 (1.47 to 6.18) | 0.003 | |
| 25 to 27 January 2021 (wave 42) | 91 (77.8) | 26 (22.2) | 3.18 (1.58 to 6.41) | 0.001 | 2.96 (1.43 to 6.12) | 0.003 | 2.97 (1.43 to 6.15) | 0.003 | |
| Region | East Midlands | 164 (79.6) | 42 (20.4) | Reference | - | Reference | - | Reference | - |
| | East of England | 191 (80.9) | 45 (19.1) | 0.94 (0.58 to 1.51) | 0.79 | 0.82 (0.50 to 1.35) | 0.44 | 0.82 (0.50 to 1.36) | 0.45 |
| | London | 500 (83.6) | 98 (16.4) | 0.76 (0.51 to 1.15) | 0.19 | 0.83 (0.53 to 1.28) | 0.39 | 0.83 (0.53 to 1.28) | 0.40 |

| | | | | | | | | |
|--------------------------|------------|-----------|---------------------|------|---------------------|------|---------------------|------|
| North East | 103 (79.8) | 26 (20.2) | 0.97 (0.56 to 1.69) | 0.92 | 0.91 (0.51 to 1.62) | 0.75 | 0.92 (0.52 to 1.62) | 0.76 |
| North West | 264 (80.0) | 66 (20.0) | 0.98 (0.63 to 1.51) | 0.92 | 1.03 (0.64 to 1.65) | 0.89 | 1.04 (0.65 to 1.66) | 0.88 |
| Northern Ireland | 33 (91.7) | 3 (8.3) | 0.36 (0.10 to 1.24) | 0.11 | 0.41 (0.12 to 1.45) | 0.17 | 0.41 (0.12 to 1.44) | 0.16 |
| Scotland | 171 (85.5) | 29 (14.5) | 0.66 (0.39 to 1.10) | 0.11 | 0.69 (0.39 to 1.21) | 0.20 | 0.69 (0.40 to 1.22) | 0.20 |
| South East | 259 (79.4) | 67 (20.6) | 1.00 (0.65 to 1.55) | 0.98 | 0.94 (0.58 to 1.51) | 0.79 | 0.94 (0.58 to 1.52) | 0.80 |
| South West | 173 (84.0) | 33 (16.0) | 0.75 (0.45 to 1.24) | 0.26 | 0.75 (0.44 to 1.28) | 0.29 | 0.75 (0.44 to 1.28) | 0.29 |
| Wales | 89 (79.5) | 23 (20.5) | 1.00 (0.57 to 1.77) | 0.99 | 0.95 (0.52 to 1.74) | 0.86 | 0.95 (0.52 to 1.75) | 0.87 |
| West Midlands | 231 (83.7) | 45 (16.3) | 0.75 (0.47 to 1.20) | 0.23 | 0.80 (0.49 to 1.31) | 0.37 | 0.80 (0.49 to 1.31) | 0.37 |
| Yorkshire and the Humber | 224 (84.5) | 41 (15.5) | 0.72 (0.44 to 1.16) | 0.17 | 0.71 (0.42 to 1.19) | 0.19 | 0.71 (0.42 to 1.19) | 0.19 |

* Adjusting for survey wave, region, sex, age (raw and quadratic term), dependent child in the household, being clinically vulnerable to COVID-19, having a household member with a chronic illness, employment status, highest earner is a manual worker, index of multiple deprivation, highest educational or professional qualification, ethnicity, and living alone.

† Adjusting for survey wave, region, sex, age (raw and quadratic term), dependent child in the household, being clinically vulnerable to COVID-19, having a household member with a chronic illness, employment status, socioeconomic grade, index of multiple deprivation, highest educational or professional qualification, ethnicity, and living alone.

Table 5. Intention to share details of your close contacts with the NHS contact tracing service and associations with survey wave and region.

Bolding indicates findings significant at a $p < 0.001$.

| Participant characteristics | Level | Probably or definitely would not share details of close contacts or not sure n=9,138 | Probably or definitely would share details of close contacts n=34,299 | Odds ratio (95% CI) for sharing details of close contacts | p-value | Adjusted odds ratio (95% CI) for sharing details of close contacts * | p-value | Adjusted odds ratio (95% CI) for sharing details of close contacts † | p-value |
|---------------------------------|--|---|--|---|---------------------|--|---------------------|--|------------------|
| Survey wave‡ | 1 to 3 June 2020 (wave 19) | 453 (24.7) | 1382 (75.3) | Reference | - | Reference | - | Reference | - |
| | 8 to 10 June 2020 (wave 20) | 441 (23.9) | 1402 (76.1) | 1.04 (0.90 to 1.20) | 0.57 | 1.02 (0.88 to 1.19) | 0.78 | 1.02 (0.87 to 1.19) | 0.82 |
| | 15 to 17 June 2020 (wave 21) | 471 (25.3) | 1390 (74.7) | 0.98 (0.86 to 1.13) | 0.80 | 0.96 (0.83 to 1.11) | 0.58 | 0.96 (0.83 to 1.11) | 0.57 |
| | 22 to 24 June 2020 (wave 22) | 471 (25.4) | 1382 (74.6) | 0.94 (0.81 to 1.09) | 0.42 | 0.88 (0.75 to 1.03) | 0.10 | 0.88 (0.75 to 1.02) | 0.10 |
| | 29 June to 1 July 2020 (wave 23) | 433 (23.2) | 1431 (76.8) | 1.09 (0.95 to 1.26) | 0.21 | 1.06 (0.91 to 1.24) | 0.42 | 1.06 (0.91 to 1.23) | 0.44 |
| | 6 to 8 July 2020 (wave 24) | 451 (24.0) | 1426 (76.0) | 1.04 (0.90 to 1.19) | 0.62 | 0.99 (0.85 to 1.15) | 0.89 | 0.99 (0.85 to 1.14) | 0.86 |
| | 20 to 22 July 2020 (wave 25) | 449 (24.0) | 1423 (76.0) | 1.04 (0.90 to 1.19) | 0.59 | 1.04 (0.90 to 1.21) | 0.57 | 1.04 (0.90 to 1.21) | 0.59 |
| | 3 to 5 August 2020 (wave 26) | 391 (20.8) | 1493 (79.2) | 1.22 (1.06 to 1.41) | 0.007 | 1.18 (1.01 to 1.38) | 0.03 | 1.18 (1.01 to 1.38) | 0.04 |
| | 1 to 2 September 2020 (wave 27) | 385 (20.5) | 1493 (79.5) | 1.26 (1.09 to 1.47) | 0.002 | 1.29 (1.10 to 1.52) | 0.002 | 1.30 (1.10 to 1.52) | 0.002 |
| | 14 to 16 September 2020 (wave 28) | 361 (19.4) | 1500 (80.6) | 1.33 (1.15 to 1.55) | <0.001 | 1.30 (1.10 to 1.52) | 0.001 | 1.29 (1.10 to 1.52) | 0.002 |
| | 28 to 30 September 2020 (wave 29) | 387 (20.2) | 1531 (79.8) | 1.26 (1.09 to 1.46) | 0.002 | 1.18 (1.02 to 1.38) | 0.03 | 1.19 (1.02 to 1.38) | 0.03 |
| | 12 to 14 October 2020 (wave 30) | 363 (18.6) | 1592 (81.4) | 1.41 (1.22 to 1.64) | <0.001 | 1.29 (1.10 to 1.50) | 0.002 | 1.29 (1.10 to 1.51) | 0.001 |
| | 9 to 11 November 2020 (wave 32) | 373 (19.7) | 1522 (80.3) | 1.31 (1.13 to 1.51) | <0.001 | 1.19 (1.02 to 1.38) | 0.03 | 1.19 (1.02 to 1.38) | 0.03 |
| | 16 to 18 November 2020 (wave 33) | 408 (21.3) | 1510 (78.7) | 1.19 (1.03 to 1.38) | 0.02 | 1.15 (0.98 to 1.34) | 0.08 | 1.15 (0.99 to 1.34) | 0.07 |
| | 23 to 25 November 2020 (wave 34) | 334 (17.6) | 1566 (82.4) | 1.50 (1.29 to 1.74) | <0.001 | 1.37 (1.17 to 1.61) | <0.001 | 1.37 (1.17 to 1.61) | <0.001 |
| | 30 November to 2 December 2020 (wave 35) | 379 (19.7) | 1544 (80.3) | 1.32 (1.14 to 1.53) | <0.001 | 1.28 (1.09 to 1.50) | 0.002 | 1.28 (1.09 to 1.50) | 0.002 |
| | 7 to 9 December 2020 (wave 36) | 397 (20.0) | 1584 (80.0) | 1.27 (1.10 to 1.47) | 0.001 | 1.18 (1.01 to 1.37) | 0.04 | 1.18 (1.01 to 1.37) | 0.04 |
| | 14 to 16 December 2020 (wave 37) | 405 (21.2) | 1501 (78.8) | 1.19 (1.03 to 1.38) | 0.02 | 1.14 (0.98 to 1.33) | 0.09 | 1.14 (0.98 to 1.33) | 0.09 |
| | 21 to 23 December 2020 (wave 38) | 363 (19.1) | 1533 (80.9) | 1.34 (1.16 to 1.56) | <0.001 | 1.26 (1.08 to 1.48) | 0.003 | 1.26 (1.08 to 1.48) | 0.003 |
| | 28 to 30 December 2020 (wave 39) | 365 (19.7) | 1486 (80.3) | 1.30 (1.12 to 1.51) | 0.001 | 1.25 (1.07 to 1.46) | 0.006 | 1.25 (1.06 to 1.46) | 0.006 |
| 4 to 6 January 2021 (wave 40) | 350 (18.5) | 1544 (81.5) | 1.41 (1.22 to 1.64) | <0.001 | 1.27 (1.09 to 1.49) | 0.003 | 1.27 (1.08 to 1.48) | 0.003 | |
| 11 to 13 January 2021 (wave 41) | 366 (19.4) | 1522 (80.6) | 1.33 (1.15 to 1.55) | <0.001 | 1.22 (1.04 to 1.42) | 0.01 | 1.21 (1.04 to 1.42) | 0.02 | |
| 25 to 27 January 2021 (wave 42) | 342 (18.2) | 1542 (81.8) | 1.44 (1.24 to 1.67) | <0.001 | 1.29 (1.10 to 1.51) | 0.002 | 1.29 (1.10 to 1.52) | 0.002 | |
| Region | East Midlands | 717 (20.7) | 2744 (79.3) | Reference | - | Reference | - | Reference | - |
| | East of England | 865 (20.4) | 3371 (79.6) | 0.97 (0.85 to 1.09) | 0.57 | 0.97 (0.85 to 1.11) | 0.70 | 0.98 (0.86 to 1.12) | 0.75 |

| | | | | | | | | |
|--------------------------|-------------|-------------|----------------------------|------------------|---------------------|------|---------------------|------|
| London | 1271 (25.0) | 3805 (75.0) | 0.73 (0.65 to 0.82) | <0.001 | 0.93 (0.82 to 1.06) | 0.29 | 0.92 (0.81 to 1.05) | 0.22 |
| North East | 376 (19.1) | 1589 (80.9) | 1.04 (0.89 to 1.22) | 0.61 | 1.14 (0.96 to 1.34) | 0.13 | 1.14 (0.97 to 1.34) | 0.12 |
| North West | 1081 (22.1) | 3810 (77.9) | 0.87 (0.78 to 0.98) | 0.03 | 0.96 (0.84 to 1.08) | 0.48 | 0.95 (0.84 to 1.08) | 0.44 |
| Northern Ireland | 181 (22.5) | 622 (77.5) | 0.88 (0.72 to 1.09) | 0.25 | 0.98 (0.79 to 1.22) | 0.86 | 0.98 (0.78 to 1.22) | 0.84 |
| Scotland | 629 (18.5) | 2778 (81.5) | 1.10 (0.97 to 1.26) | 0.15 | 1.15 (1.00 to 1.32) | 0.05 | 1.15 (.001 to 1.32) | 0.05 |
| South East | 1167 (20.0) | 4659 (80.0) | 0.99 (0.88 to 1.11) | 0.82 | 0.99 (0.88 to 1.12) | 0.90 | 0.99 (0.87 to 1.12) | 0.87 |
| South West | 720 (19.0) | 3071 (81.0) | 1.04 (0.91 to 1.18) | 0.57 | 1.06 (0.92 to 1.21) | 0.44 | 1.06 (0.92 to 1.21) | 0.43 |
| Wales | 390 (18.1) | 1770 (81.9) | 1.10 (0.95 to 1.28) | 0.22 | 1.15 (0.97 to 1.35) | 0.10 | 1.14 (0.97 to 1.34) | 0.10 |
| West Midlands | 898 (23.4) | 2934 (76.6) | 0.81 (0.72 to 0.92) | 0.001 | 0.93 (0.81 to 1.06) | 0.25 | 0.93 (0.81 to 1.06) | 0.25 |
| Yorkshire and the Humber | 843 (21.1) | 3146 (78.9) | 0.93 (0.82 to 1.05) | 0.25 | 1.03 (0.90 to 1.17) | 0.70 | 1.02 (0.89 to 1.17) | 0.75 |

* Adjusting for survey wave, region, sex, age (raw and quadratic term), dependent child in the household, being clinically vulnerable to COVID-19, having a household member with a chronic illness, employment status, highest earner is a manual worker, index of multiple deprivation, highest educational or professional qualification, ethnicity, and living alone.

† Adjusting for survey wave, region, sex, age (raw and quadratic term), dependent child in the household, being clinically vulnerable to COVID-19, having a household member with a chronic illness, employment status, socio-economic grade, index of multiple deprivation, highest educational or professional qualification, ethnicity, and living alone.

‡ For most GEE analyses, we used an exchangeable correlation structure. This failed to converge for the univariable analysis for survey wave, so we used an unstructured correlation structure.

Supplementary materials. Associations between personal and clinical characteristics and fully self-isolating after developing symptoms of COVID-19. Bolding indicates findings significant at a $p < 0.001$.

| Participant characteristics | Level | Did not fully self-isolate n=2,717 | Fully self-isolated n=680 | Odds ratio (95% CI) for fully self-isolating | p-value | Adjusted odds ratio (95% CI) for fully self-isolating * | p-value | Adjusted odds ratio (95% CI) for fully self-isolating † | p-value |
|---|--|---------------------------------------|------------------------------|---|---------|---|---------|---|---------|
| Survey wave | Overall | - | - | $\chi^2(29)=64.0$ | <0.001 | $\chi^2(29)=57.3$ | 0.001 | $\chi^2(29)=56.3$ | 0.002 |
| Region | Overall | - | - | $\chi^2(11)=45.5$ | <0.001 | $\chi^2(11)=20.3$ | 0.04 | $\chi^2(11)=20.6$ | 0.04 |
| Gender | Male | 1562 (83.5) | 308 (16.5) | Reference | - | Reference | - | Reference | - |
| | Female | 1148 (75.8) | 366 (24.2) | 1.66 (1.39 to 1.97) | <0.001 | 1.87 (1.53 to 2.29) | <0.001 | 1.89 (1.55 to 2.31) | <0.001 |
| Age (per decade) | Raw age | N=2,717, M=34.8, SD=13.6 | N=680, M=42.4, SD=17.0 | 1.37 (1.30 to 1.46) | <0.001 | 1.28 (1.19 to 1.38) | <0.001 | 1.29 (1.20 to 1.39) | <0.001 |
| Age: quadratic (age-mean) ² | - | - | - | - | - | 0.9998 (0.9995 to 1.0002) | 0.33 | 0.9998 (0.9994 to 1.0001) | 0.23 |
| Dependent child in household | None | 1139 (74.2) | 397 (25.8) | Reference | - | Reference | - | Reference | - |
| | Child present | 1578 (84.8) | 283 (15.2) | 0.54 (0.46 to 0.65) | <0.001 | 0.69 (0.55 to 0.87) | 0.002 | 0.69 (0.54 to 0.87) | 0.001 |
| Clinically vulnerable to COVID-19 | None | 1746 (79.6) | 448 (20.4) | Reference | - | Reference | - | Reference | - |
| | Present | 765 (79.6) | 196 (20.4) | 1.00 (0.83 to 1.20) | 0.97 | 0.81 (0.66 to 1.00) | 0.05 | 0.82 (0.67 to 1.01) | 0.06 |
| Household member has chronic illness | None | 2077 (78.9) | 554 (21.1) | Reference | - | Reference | - | Reference | - |
| | Present | 583 (84.1) | 110 (15.9) | 0.68 (0.54 to 0.85) | 0.001 | 0.69 (0.54 to 0.90) | 0.005 | 0.69 (0.53 to 0.88) | 0.004 |
| Employment status | Not working | 810 (73.9) | 286 (26.1) | Reference | - | Reference | - | Reference | - |
| | Working | 1873 (83.2) | 379 (16.8) | 0.60 (0.51 to 0.72) | <0.001 | 0.76 (0.61 to 0.94) | 0.01 | 0.70 (0.56 to 0.86) | 0.001 |
| Highest earner works in a manual occupation | No | 1353 (75.9) | 429 (24.1) | Reference | - | Reference | - | - | - |
| | Yes | 1333 (85.0) | 235 (15.0) | 0.58 (0.49 to 0.69) | <0.001 | 0.69 (0.56 to 0.84) | <0.001 | - | - |
| Socioeconomic grade | ABC1 (high) | 1134 (78.5) | 310 (21.5) | Reference | - | - | - | Reference | - |
| | C2DE | 1552 (81.4) | 354 (18.6) | 0.83 (0.70 to 0.98) | 0.03 | - | - | 0.75 (0.62 to 0.91) | 0.003 |
| Index of multiple deprivation | 1 st quartile (least deprived) | 369 (78.5) | 101 (21.5) | 1.24 (0.94 to 1.62) | 0.12 | 0.96 (0.70 to 1.33) | 0.82 | 0.94 (0.68 to 1.31) | 0.72 |
| | 2 nd quartile | 479 (75.8) | 153 (24.2) | 1.40 (1.10 to 1.77) | 0.006 | 1.12 (0.85 to 1.47) | 0.43 | 1.10 (0.83 to 1.45) | 0.50 |
| | 3 rd quartile | 791 (81.2) | 183 (18.8) | 1.06 (0.85 to 1.32) | 0.59 | 0.94 (0.73 to 1.22) | 0.66 | 0.94 (0.73 to 1.21) | 0.61 |
| | 4 th quartile (most deprived) | 1078 (81.6) | 243 (18.4) | Reference | - | Reference | - | Reference | - |
| | Overall | - | - | $\chi^2(3)=8.7$ | 0.03 | $\chi^2(3)=1.5$ | 0.69 | $\chi^2(3)=1.4$ | 0.71 |
| Highest educational or professional qualification | GCSE/vocational/A-level/No formal qualifications | 1364 (75.5) | 443 (24.5) | Reference | - | Reference | - | Reference | - |

| | | | | | | | | | |
|---|--|-------------------------|----------------------|----------------------------|------------------|----------------------------|------------------|----------------------------|------------------|
| | Degree or higher (Bachelors, Masters, PhD) | 1353 (85.1) | 237 (14.9) | 0.56 (0.47 to 0.67) | <0.001 | 0.61 (0.50 to 0.74) | <0.001 | 0.60 (0.49 to 0.73) | <0.001 |
| Ethnicity | White British | 1799 (77.8) | 512 (22.2) | Reference | - | Reference | - | Reference | - |
| | White other | 461 (88.1) | 62 (11.9) | 0.46 (0.35 to 0.60) | <0.001 | 0.60 (0.43 to 0.84) | 0.003 | 0.58 (0.41 to 0.81) | 0.001 |
| | Black and minority ethnicity | 447 (81.9) | 99 (18.1) | 0.78 (0.61 to 0.99) | 0.04 | 1.11 (0.83 to 1.48) | 0.47 | 1.12 (0.84 to 1.49) | 0.46 |
| | Overall | - | - | $\chi^2(2)=31.4$ | <0.001 | $\chi^2(2)=10.7$ | 0.005 | $\chi^2(2)=2.3$ | 0.002 |
| Living alone | Not living alone | 2287 (80.6) | 551 (19.4) | Reference | - | Reference | - | Reference | - |
| | Living alone | 430 (76.9) | 129 (23.1) | 1.19 (0.96 to 1.48) | 0.12 | 0.85 (0.64 to 1.13) | 0.27 | 0.87 (0.65 to 1.15) | 0.32 |
| Work in key sectors | No | 403 (70.8) | 166 (29.2) | Reference | - | Reference | - | Reference | - |
| | Yes | 1718 (86.5) | 268 (13.5) | 0.39 (0.31 to 0.49) | <0.001 | 0.51 (0.39 to 0.68) | <0.001 | 0.51 (0.39 to 0.67) | <0.001 |
| Self-employed‡ | No | 1683 (82.5) | 358 (17.5) | Reference | - | Reference | - | Reference | - |
| | Yes | 190 (90.0) | 21 (10.0) | 0.52 (0.33 to 0.81) | 0.004 | 0.67 (0.40 to 1.14) | 0.14 | 0.69 (0.41 to 1.17) | 0.17 |
| Marital status | Single/separated/divorced /widowed | 1138 (79.2) | 299 (20.8) | Reference | - | Reference | - | Reference | - |
| | Married/partnered | 1462 (79.8) | 369 (20.2) | 0.98 (0.83 to 1.17) | 0.85 | 0.95 (0.76 to 1.17) | 0.62 | 0.93 (0.75 to 1.16) | 0.53 |
| Ever had COVID-19 | Think have not had COVID-19 | 1420 (74.8) | 478 (25.2) | Reference | - | Reference | - | Reference | - |
| | Think or had COVID-19 confirmed | 1297 (86.5) | 202 (13.5) | 0.51 (0.42 to 0.60) | <0.001 | 0.59 (0.48 to 0.73) | <0.001 | 0.59 (0.48 to 0.72) | <0.001 |
| Attribute current symptoms to COVID-19§ | No | 1397 (80.5) | 339 (19.5) | Reference | - | Reference | - | Reference | - |
| | Yes | 423 (79.5) | 109 (20.5) | 1.11 (0.88 to 1.41) | 0.38 | 1.29 (0.97 to 1.71) | 0.08 | 1.28 (0.96 to 1.71) | 0.09 |
| Hardship | Range 3 (least hardship) to 15 (most hardship) | N=2,392, M=10.4, SD=2.6 | N=590, M=9.4, SD=2.9 | 0.88 (0.85 to 0.91) | <0.001 | 0.91 (0.87 to 0.95) | <0.001 | 0.91 (0.87 to 0.95) | <0.001 |

Abbreviations: N=number; M=mean; SD=standard deviation; CI=confidence intervals.

For continuous variables, odds ratios represent a one-unit increase in the explanatory variable, apart from for age, where odds ratios represent a ten-year increase in age.

* Adjusting for survey wave, region, sex, age (raw and quadratic), dependent child in the household, clinically vulnerable to covid-19, household member has chronic illness, employment status, highest earner works in a manual occupation, index of multiple deprivation, highest educational or professional qualification, ethnicity, and living alone.

† Adjusting for survey wave, region, sex, age (raw and quadratic term), dependent child in the household, clinically vulnerable to covid-19, household member has chronic illness, employment status, socio-economic grade, index of multiple deprivation, highest educational or professional qualification, ethnicity, and living alone.

‡ Not adjusting for employment status as by definition all people asked whether they were self-employed were working.

§ Item added to survey in wave 21 (15 June 2020)

|| Items added to survey in wave 14 (27 April 2020)

Supplementary materials. Self-reported reasons for not adhering to test, trace and isolate behaviours.

Self-isolation in those not adherent to duration-adjusted self-isolation, excluding those who tested negative (n=698)

| Self-reported reasons for having left home since having developed symptoms (participants could select multiple response options) | n | % |
|---|-----|------|
| To go to the shops, for groceries/pharmacy | 150 | 21.5 |
| To go out to work | 110 | 15.8 |
| To go to the shops, for things other than groceries/pharmacy | 109 | 15.6 |
| My symptoms did not persist / were temporary | 106 | 15.2 |
| For a medical need (other than coronavirus) | 105 | 15.0 |
| To go for a walk or some other exercise | 103 | 14.8 |
| My symptoms were only mild | 101 | 14.5 |
| My symptoms got better | 97 | 13.9 |
| I don't think it is necessary for me to stay at home | 92 | 13.2 |
| I was too bored | 85 | 12.2 |
| To help or provide care for a vulnerable person | 83 | 11.9 |
| To meet up with friends and/or family | 79 | 11.3 |
| I was too depressed or anxious | 78 | 11.2 |
| I didn't think it was that risky* | 49 | 9.8 |
| I was too lonely | 68 | 9.7 |
| My symptoms got worse | 59 | 8.5 |
| To get or return a test for coronavirus† | 32 | 7.6 |

* Item added on 23 November 2020 (wave 34); baseline n=498.

† Item added on 23 November 2020 (wave 34); baseline n=421. Different baseline n due to exclusion of those who tested negative.

Requesting a test (n=2,230).

| Self-reported reasons for not requesting a test to confirm whether you had coronavirus (participants could select multiple response options) | n | % |
|--|-----|------|
| I didn't think my symptoms were due to coronavirus | 467 | 20.9 |
| My symptoms improved* | 196 | 16.9 |
| My symptoms were only mild* | 189 | 16.3 |
| My symptoms were only mild or improved § | 144 | 13.5 |
| I hadn't been in contact with anyone who had coronavirus recently | 291 | 13.0 |
| I thought I only needed to self-isolate (not leaving the home at all) | 256 | 11.5 |
| I didn't want to use a test that could have gone to someone else who needed it more | 247 | 11.1 |
| I didn't think I was eligible to get a test | 245 | 11.0 |
| I was worried about how colleagues/my employer would react if I tested positive † | 188 | 10.0 |
| I didn't know how to request a test | 208 | 9.3 |
| I was sure I had coronavirus, so I didn't see a reason to take a test | 206 | 9.2 |
| I have already had coronavirus, so didn't see a reason to take a test | 198 | 8.9 |
| I was worried what friends or family would think about me if I tested positive † | 158 | 8.4 |
| I thought it would take too long to get a test result § | 86 | 8.0 |
| I thought the test would be uncomfortable or painful | 171 | 7.7 |
| I didn't think tests were available near me ‡ | 96 | 7.7 |
| I didn't think the test would be accurate | 169 | 7.6 |
| I didn't want to know the results of a test | 168 | 7.5 |
| I didn't want to have a coronavirus test result on my medical record § | 77 | 7.2 |
| I didn't want to have to ask the people who I live or who I have met with to self-isolate § | 74 | 6.9 |
| I didn't know what the test involved | 151 | 6.8 |
| I didn't want to have to self-isolate § | 70 | 6.5 |
| I didn't want to increase the case numbers in my local area because this leads to tighter restrictions § | 70 | 6.5 |
| I didn't want the police or other public bodies to be notified § | 64 | 6.0 |
| I was worried that I might get fined § | 59 | 5.5 |

* Items last included on 14 October 2020 (wave 30); baseline n=1,160.

† Items added on 29 June 2020 (wave 23); baseline n=1,882.

‡ Item added on 28 September (wave 29); baseline n=1,242.

§ Items added on 26 October 2020 (wave 31); baseline n=1,070.

Intention to share details of close contacts (n=45,720)

| Self-reported reasons that would stop you passing details of your recent close contacts to the NHS (participants could select multiple response options) | n | % |
|--|--------|------|
| I don't know if the data will be secure and confidential | 6,674 | 14.6 |
| I don't think the contact tracing system is accurate and reliable | 6,355 | 13.9 |
| I don't know what will happen to the data | 5,929 | 13.0 |
| It would cause stress to my contacts | 3,409 | 7.5 |
| It would cause inconvenience to my contacts | 2,766 | 6.0 |
| It would cause loss of income to my contacts | 2,431 | 5.3 |
| I don't want to be responsible of other people being told to self-isolate | 2,163 | 4.7 |
| My contacts would be angry | 2,083 | 4.6 |
| I am worried about being found out by my contacts | 1,571 | 3.4 |
| None of the above, I would share details of recent close contacts with the NHS if asked to do so (single code) | 29,102 | 63.6 |

Supplementary materials. Associations between personal and clinical characteristics and requesting a test after developing symptoms of COVID-19. Bolding indicates findings significant at a $p < 0.001$.

| Participant characteristics | Level | Did not request a test n=2,402 | Requested a test n=518 | Odds ratio (95% CI) for requesting a test | p-value | Adjusted odds ratio (95% CI) for requesting a test * | p-value | Adjusted odds ratio (95% CI) for requesting a test † | p-value |
|---|--|--------------------------------|------------------------|---|------------------|--|------------------|--|------------------|
| Survey wave | Overall | - | - | $\chi^2(23)=75.9$ | <0.001 | $\chi^2(23)=65.9$ | <0.001 | $\chi^2(23)=66.0$ | <0.001 |
| Region | Overall | - | - | $\chi^2(11)=11.2$ | 0.43 | $\chi^2(11)=6.9$ | 0.81 | $\chi^2(11)=7.0$ | 0.80 |
| Gender | Male | 1354 (85.1) | 237 (44.9) | Reference | - | Reference | - | Reference | - |
| | Female | 1037 (78.8) | 279 (21.2) | 1.54 (1.27 to 1.87) | <0.001 | 1.41 (1.14 to 1.74) | 0.002 | 1.41 (1.14 to 1.74) | 0.001 |
| Age (per decade) | Raw age | N=2,402, M=36.9, SD=15.0 | N=518, M=36.5, SD=13.7 | 0.99 (0.93 to 1.05) | 0.67 | 0.93 (0.84 to 1.03) | 0.17 | 0.93 (0.84 to 1.03) | 0.18 |
| Age: quadratic (age-mean) ² | - | - | - | - | - | 0.9997 (0.9992 to 1.0001) | 0.15 | 0.9997 (0.9992 to 1.0001) | 0.14 |
| Dependent child in household | None | 1093 (82.9) | 226 (17.1) | Reference | - | Reference | - | Reference | - |
| | Child present | 1309 (81.8) | 292 (18.2) | 1.07 (0.88 to 1.29) | 0.52 | 1.03 (0.80 to 1.32) | 0.82 | 1.03 (0.80 to 1.31) | 0.84 |
| Clinically vulnerable to COVID-19 | None | 1558 (82.3) | 336 (17.7) | Reference | - | Reference | - | Reference | - |
| | Present | 668 (82.2) | 145 (17.8) | 1.01 (0.81 to 1.25) | 0.96 | 1.06 (0.84 to 1.33) | 0.64 | 1.06 (0.84 to 1.34) | 0.62 |
| Household member has chronic illness | None | 1859 (82.1) | 404 (17.9) | Reference | - | Reference | - | Reference | - |
| | Present | 494 (82.6) | 104 (17.4) | 0.97 (0.76 to 1.23) | 0.79 | 1.12 (0.86 to 1.46) | 0.38 | 1.12 (0.86 to 1.46) | 0.38 |
| Employment status | Not working | 828 (84.3) | 154 (15.7) | Reference | - | Reference | - | Reference | - |
| | Working | 1537 (81.2) | 356 (18.8) | 1.25 (1.01 to 1.53) | 0.04 | 1.21 (0.94 to 1.57) | 0.14 | 1.19 (0.92 to 1.54) | 0.19 |
| Highest earner works in a manual occupation | No | 1272 (81.6) | 286 (18.4) | Reference | - | Reference | - | - | - |
| | Yes | 1093 (83.2) | 221 (16.8) | 0.90 (0.74 to 1.09) | 0.27 | 0.93 (0.75 to 1.16) | 0.51 | - | - |
| Socio-economic grade | ABC1 (high) | 1027 (81.5) | 233 (18.5) | Reference | - | - | - | Reference | - |
| | C2DE | 1338 (83.0) | 274 (17.0) | 0.90 (0.74 to 1.10) | 0.30 | - | - | 0.92 (0.74 to 1.15) | 0.47 |
| Index of multiple deprivation | 1 st quartile (least deprived) | 334 (81.7) | 75 (18.3) | 1.14 (0.84 to 1.53) | 0.39 | 1.16 (0.82 to 1.63) | 0.40 | 1.15 (0.82 to 1.62) | 0.42 |
| | 2 nd quartile | 430 (80.1) | 107 (19.9) | 1.26 (0.96 to 1.64) | 0.09 | 1.22 (0.91 to 1.65) | 0.18 | 1.22 (0.90 to 1.64) | 0.20 |
| | 3 rd quartile | 703 (82.4) | 150 (17.6) | 1.08 (0.85 to 1.37) | 0.54 | 1.08 (0.83 to 1.41) | 0.56 | 1.08 (0.83 to 1.41) | 0.57 |
| | 4 th quartile (most deprived) | 935 (83.4) | 186 (16.6) | Reference | - | Reference | - | Reference | - |
| | Overall | - | - | $\chi^2(3)=3.0$ | 0.39 | $\chi^2(3)=1.9$ | 0.59 | $\chi^2(3)=1.8$ | 0.62 |
| Highest educational or | GCSE/vocational/A-level/No formal qualifications | 1303 (81.7) | 291 (18.3) | Reference | - | Reference | - | Reference | - |

| | | | | | | | | | |
|---|--|-------------------------------|----------------------------|----------------------------|------------------|----------------------------|------------------|----------------------------|------------------|
| professional qualification | Degree or higher (Bachelors, Masters, PhD) | 1099 (82.9) | 227 (17.1) | 0.92 (0.76 to 1.11) | 0.39 | 1.02 (0.82 to 1.27) | 0.84 | 1.02 (0.82 to 1.27) | 0.87 |
| Ethnicity | White British | 1638 (81.7) | 368 (18.3) | Reference | - | Reference | - | Reference | - |
| | White other | 368 (87.0) | 55 (13.0) | 0.66 (0.48 to 0.90) | 0.009 | 0.73 (0.51 to 1.03) | 0.07 | 0.72 (0.51 to 1.02) | 0.06 |
| | Black and minority ethnicity | 381 (80.2) | 94 (19.8) | 1.09 (0.85 to 1.41) | 0.49 | 1.01 (0.75 to 1.36) | 0.94 | 1.01 (0.75 to 1.36) | 0.94 |
| | Overall | - | - | $\chi^2(2)=8.2$ | 0.02 | $\chi^2(2)=3.5$ | 0.17 | $\chi^2(2)=3.6$ | 0.16 |
| Living alone | Not living alone | 2015 (82.1) | 439 (17.9) | Reference | - | Reference | - | Reference | - |
| | Living alone | 387 (83.0) | 79 (17.0) | 0.94 (0.72 to 1.23) | 0.66 | 1.10 (0.78 to 1.54) | 0.59 | 1.10 (0.79 to 1.54) | 0.57 |
| Work in key sectors | No | 416 (82.4) | 89 (17.6) | Reference | - | Reference | - | Reference | - |
| | Yes | 1348 (81.3) | 310 (18.7) | 1.08 (0.83 to 1.40) | 0.56 | 1.35 (1.01 to 1.81) | 0.04 | 1.34 (1.00 to 1.80) | 0.05 |
| Self-employed | No | 1400 (81.3) | 321 (18.7) | Reference | - | Reference | - | Reference | - |
| | Yes | 137 (79.7) | 35 (20.3) | 1.10 (0.74 to 1.64) | 0.63 | 1.23 (0.78 to 1.94) | 0.37 | 1.24 (0.78 to 1.95) | 0.36 |
| Marital status | Single/separated/divorced/widowed | 1023 (84.1) | 194 (15.9) | Reference | - | Reference | - | Reference | - |
| | Married/partnered | 1283 (80.7) | 306 (19.3) | 1.26 (1.03 to 1.53) | 0.02 | 1.17 (0.92 to 1.50) | 0.20 | 1.17 (0.91 to 1.50) | 0.22 |
| Ever had COVID-19 | Think have not had COVID-19 | 1403 (82.9) | 290 (17.1) | Reference | - | Reference | - | Reference | - |
| | Think or had COVID-19 confirmed | 999 (81.4) | 228 (18.6) | 1.10 (0.90 to 1.33) | 0.35 | 1.08 (0.87 to 1.35) | 0.47 | 1.08 (0.87 to 1.34) | 0.49 |
| Attribute current symptoms to COVID-19§ | No | 1581 (83.4) | 315 (16.6) | Reference | - | Reference | - | Reference | - |
| | Yes | 424 (73.5) | 153 (26.5) | 1.80 (1.44 to 2.24) | <0.001 | 1.81 (1.42 to 2.31) | <0.001 | 1.80 (1.41 to 2.30) | <0.001 |
| Hardship | Range 3 (least hardship) to 15 (most hardship) | N=2,281, M=10.3, SD=2.7 | N=500, M=9.9, SD=2.8 | 0.94 (0.91 to 0.98) | 0.002 | 0.93 (0.89 to 0.97) | <0.001 | 0.93 (0.89 to 0.97) | <0.001 |

Abbreviations: N=number; M=mean; SD=standard deviation; CI=confidence intervals.

For continuous variables, odds ratios represent a one-unit increase in the explanatory variable, apart from for age, where odds ratios represent a ten-year increase in age.

* Adjusting for survey wave, region, sex, age (raw and quadratic term), dependent child in the household, clinically vulnerable to covid-19, household member has chronic illness, employment status, highest earner works in a manual occupation, index of multiple deprivation, highest educational or professional qualification, ethnicity, and living alone.

† Adjusting for survey wave, region, sex, age (raw and quadratic term), dependent child in the household, clinically vulnerable to covid-19, household member has chronic illness, employment status, socio-economic grade, index of multiple deprivation, highest educational or professional qualification, ethnicity, and living alone.

§This item was introduced to the questionnaire in wave 21 (15 June 2020).