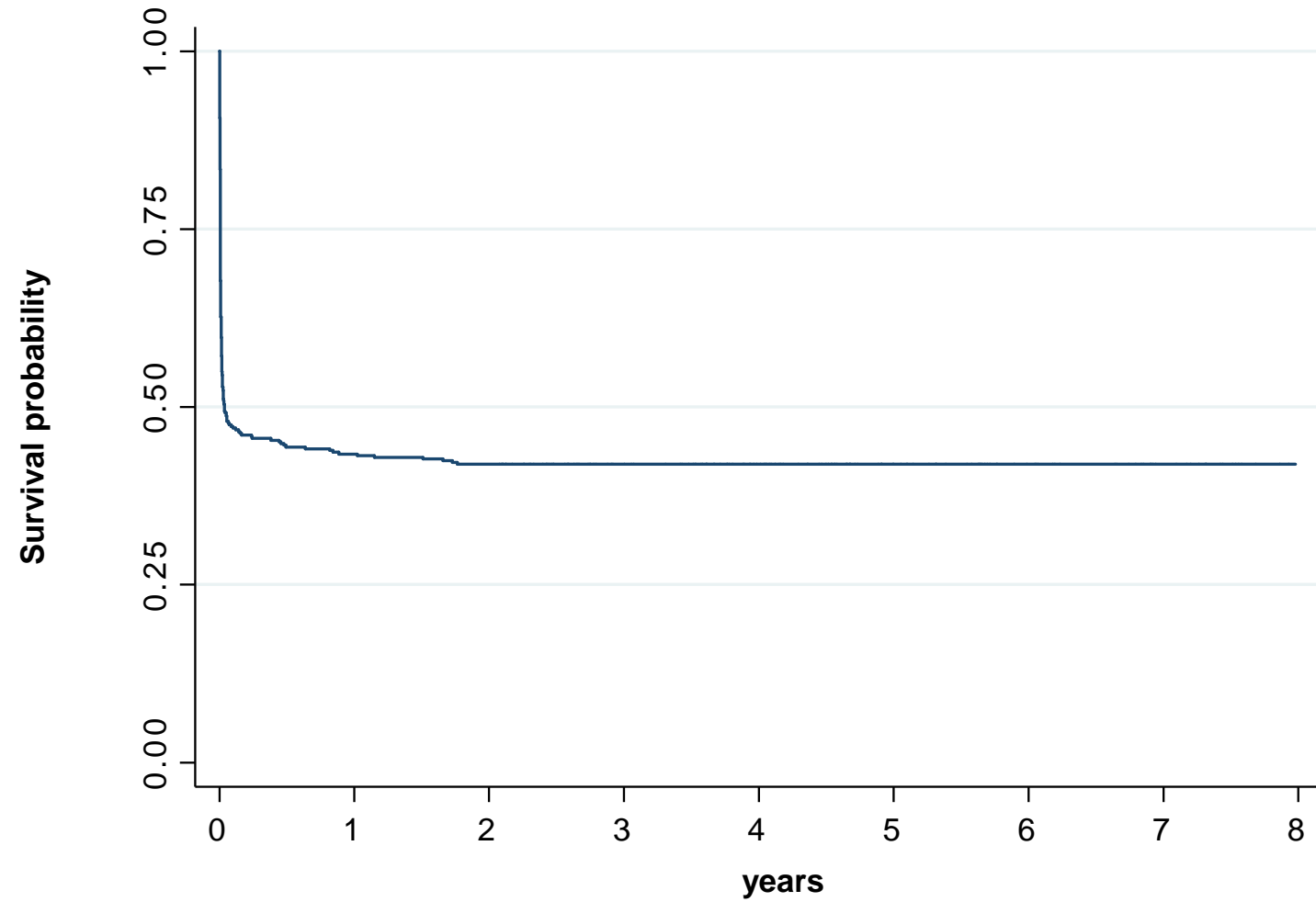


## Supplementary Material

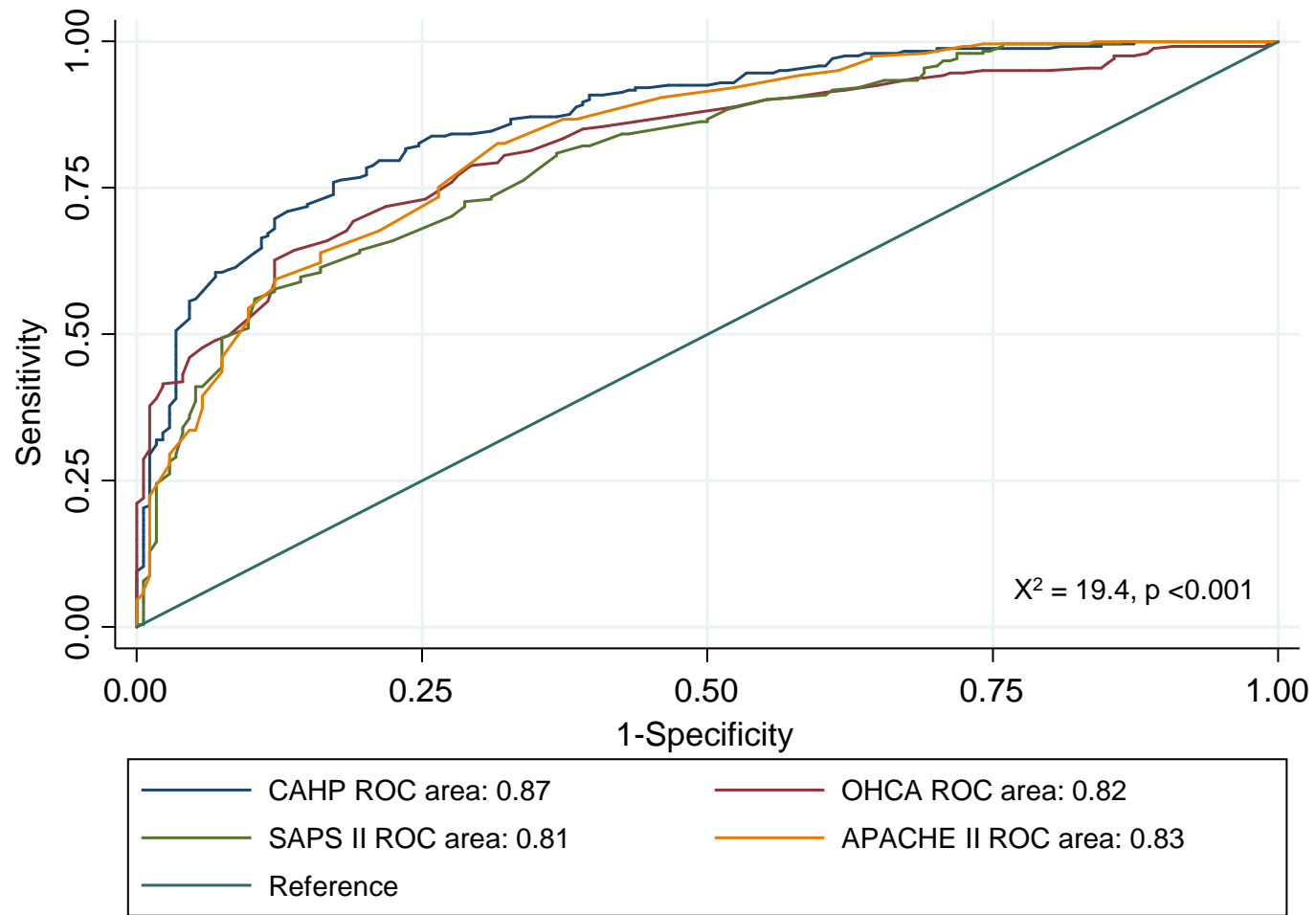
Supplementary Table 1 – Subgroup analysis				
Score	Subgroup	AUROC		
		2-year mortality	2-year neurological outcome	6-year mortality
OHCA	OHCA	0.85 (0.81-0.89)	0.83 (0.78-0.88)	0.80 (0.74-0.87)
	IHCA	0.68 (0.53-0.83)	0.74 (0.54-0.93)	0.69 (0.36-1.00)
	p-value	0.0277	0.3519	0.5290
CAHP	OHCA	0.89 (0.86-0.92)	0.88 (0.84-0.92)	0.89 (0.83-0.94)
	IHCA	0.74 (0.60-0.88)	0.69 (0.46-0.92)	0.89 (0.71-1.00)
	p-value	0.0353	0.1152	0.9751
APACHE II	OHCA	0.84 (0.80-0.88)	0.84 (0.79-0.89)	0.84 (0.77-0.90)
	IHCA	0.76 (0.62-0.90)	0.70 (0.41-0.98)	0.80 (0.48-1.00)
	p-value	0.2720	0.3337	0.8108
SAPS II	OHCA	0.82 (0.77-0.85)	0.79 (0.74-0.84)	0.79 (0.73-0.86)
	IHCA	0.75 (0.61-0.88)	0.72 (0.43-1.00)	0.88 (0.70-1.00)
	p-value	0.3553	0.6355	0.4053

Score performance in the subgroups of OHCA patients and IHCA patients. Statistical comparison between AUROC was conducted according to DeLong et al. (1988), p-values are from the X<sup>2</sup>-test. **APACHE II** Acute Physiology and Chronic Health Evaluation Score II; **AUROC** Area under the receiver operating characteristics curve; **CAHP** Cardiac Arrest Hospital Prognosis Score; **IHCA** In-Hospital Cardiac Arrest; **OHCA** Out-of-Hospital Cardiac Arrest Score; **SAPS II** Simplified Acute Physiology Score II.

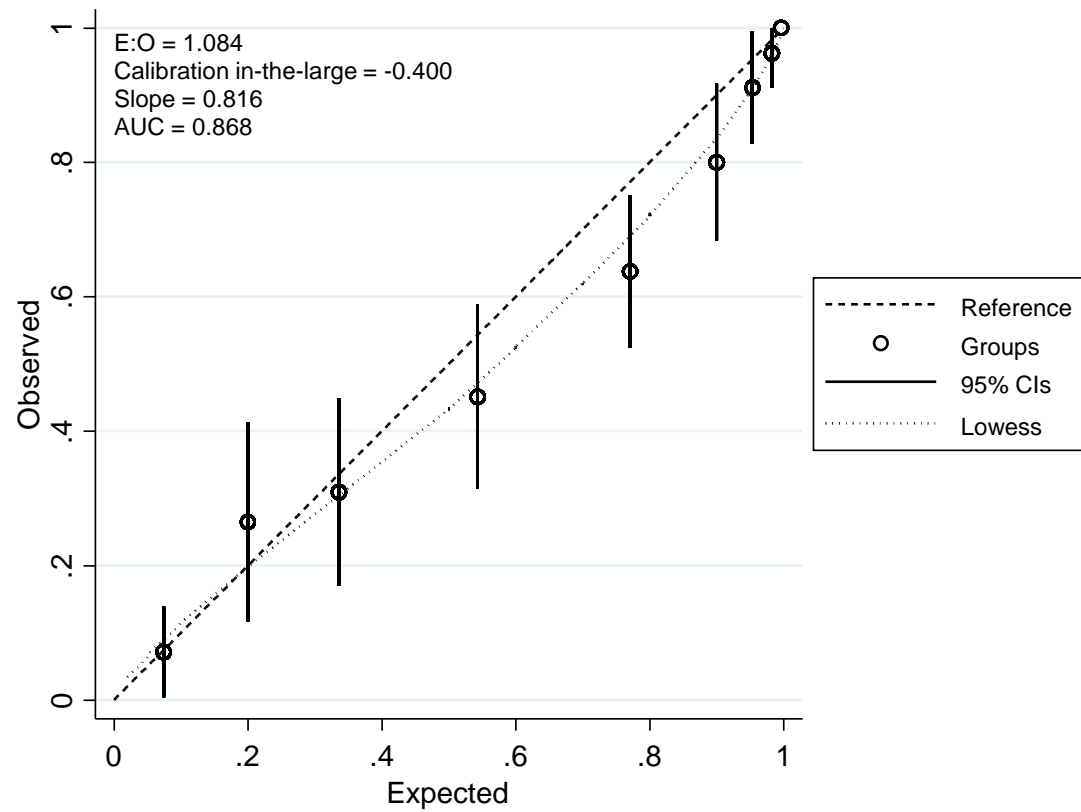


Number at risk      415      180      174      139      110      75      51      33      16

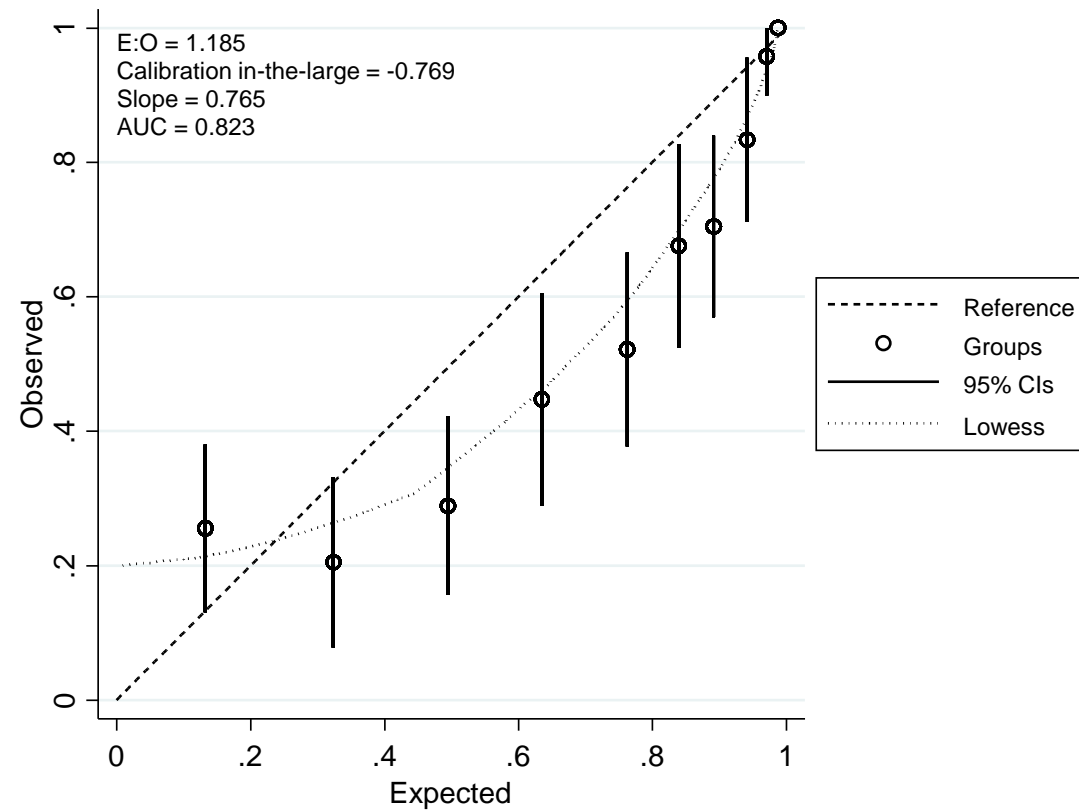
**Supplementary Figure 1.** Kaplan Meier survival estimate for the entire cohort. Number at risk for the individual time points are reported.



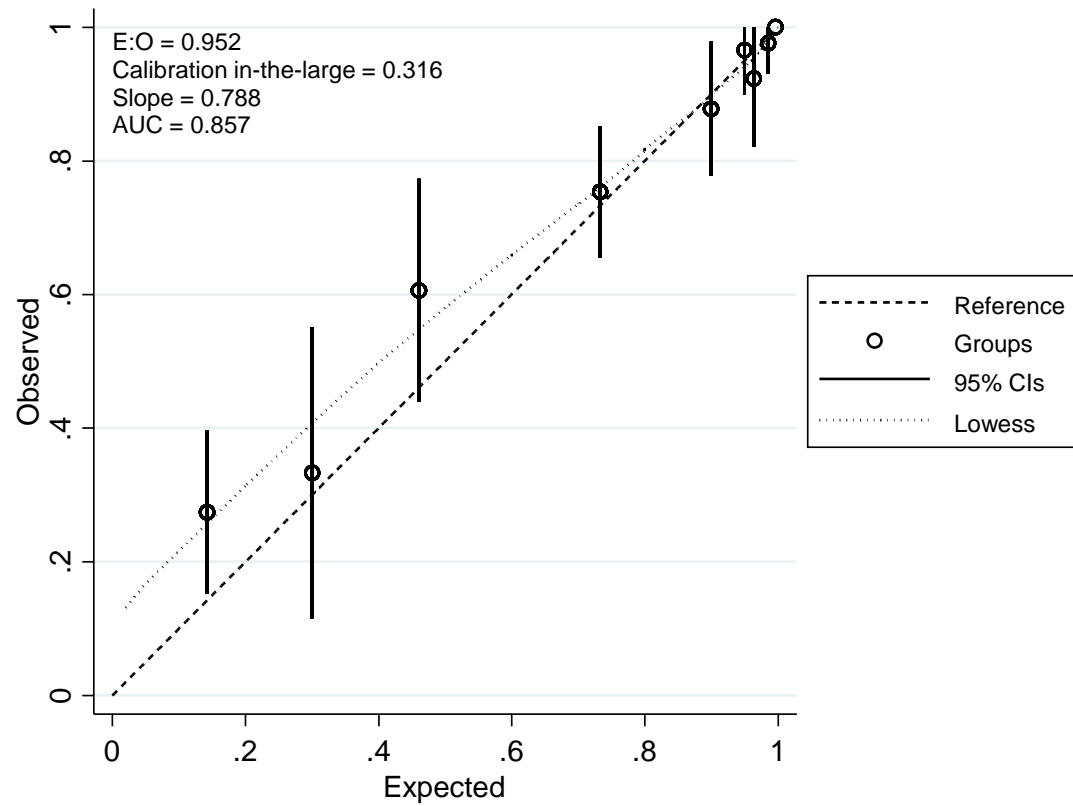
**Supplementary Figure 2.** Comparison of ROC curves for the primary outcome 2-year mortality.



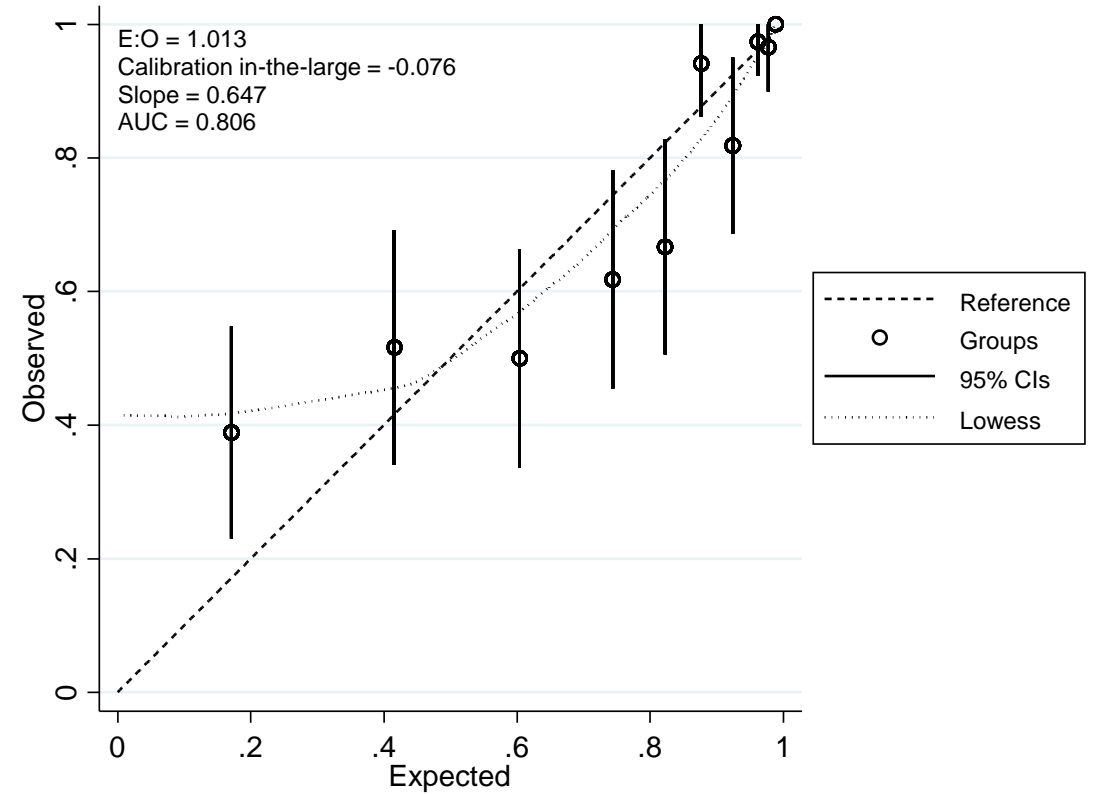
**Supplementary Figure 3.** Calibration plot depicting observed vs. expected numbers of primary outcome (2-year mortality) per decile of risk as predicted by the CAHP score.



**Supplementary Figure 4.** Calibration plot depicting observed vs. expected numbers of primary outcome (2-year mortality) per decile of risk as predicted by the OHCA score.



**Supplementary Figure 5.** Calibration plot depicting observed vs. expected numbers of poor neurological outcome at 2 years per decile of risk as predicted by the CAHP score.



**Supplementary Figure 6.** Calibration plot depicting observed vs. expected numbers of poor neurological outcome at 2 years per decile of risk as predicted by the OHCA score.