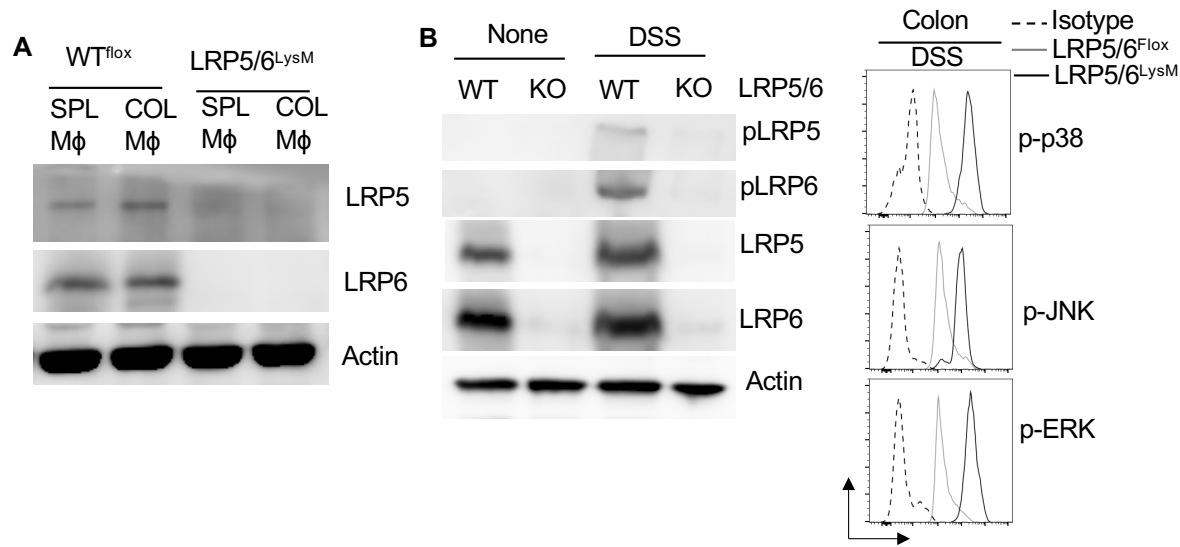


Supplementary Figure 1.



Supplementary Figure 1. (A) Immunoblot analysis of expression of LRP5 and LRP6 in colonic (COL) and splenic (SPL) macrophages isolated from LRP5/6^{Flox} and LRP5/6^{LysM} mice. **(B)** Immunoblot analysis of expression of the native and phosphorylated form of LRP5 and LRP6 in splenic macrophages isolated from DSS-treated LRP5/6^{Flox} and LRP5/6^{LysM} mice (day 8). **(C)** Representative histogram of phosphorylated p38, JNK, and ERK MAPKs in colonic macrophages isolated from DSS-treated LRP5/6^{Flox} and LRP5/6^{LysM} mice (day 8). Data is representative of two experiments (n = 4-5 mice per experiment).