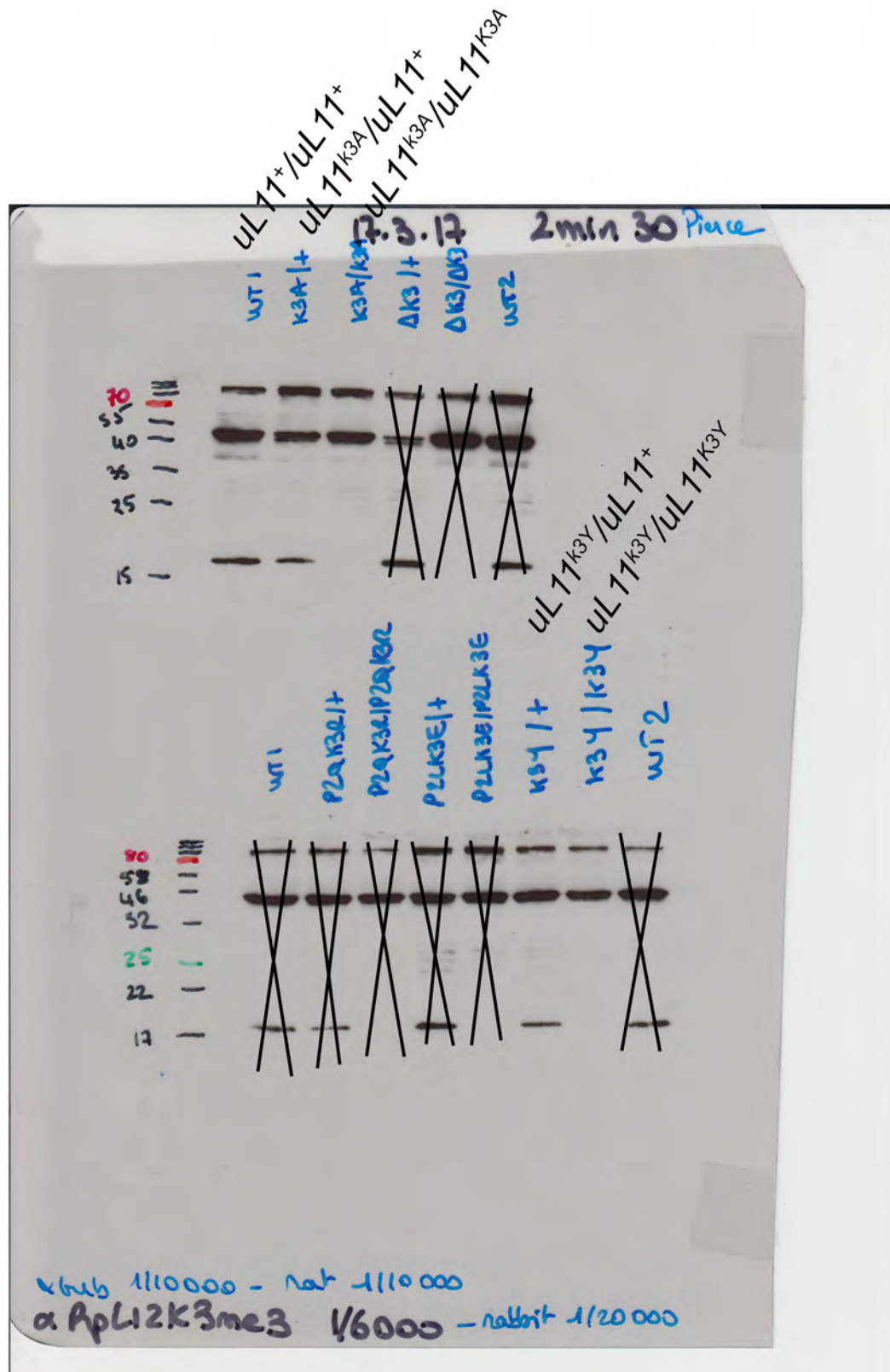


# Figure 2, top:

Exposure 2'30" (ECL)

Primary antibodies:  $\alpha$ -uL11K3me3 1/6000;  $\alpha$ -tubuline 1/10000

Secondary antibodies:  $\alpha$ -rabbit IgG 1/20000;  $\alpha$ -rat IgG 1/10000

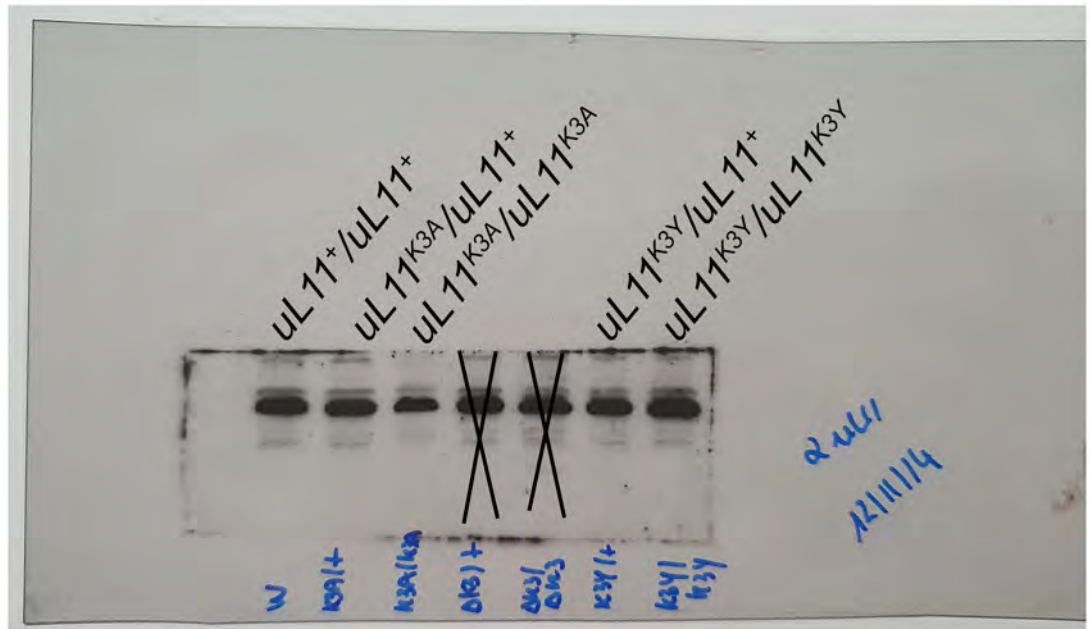


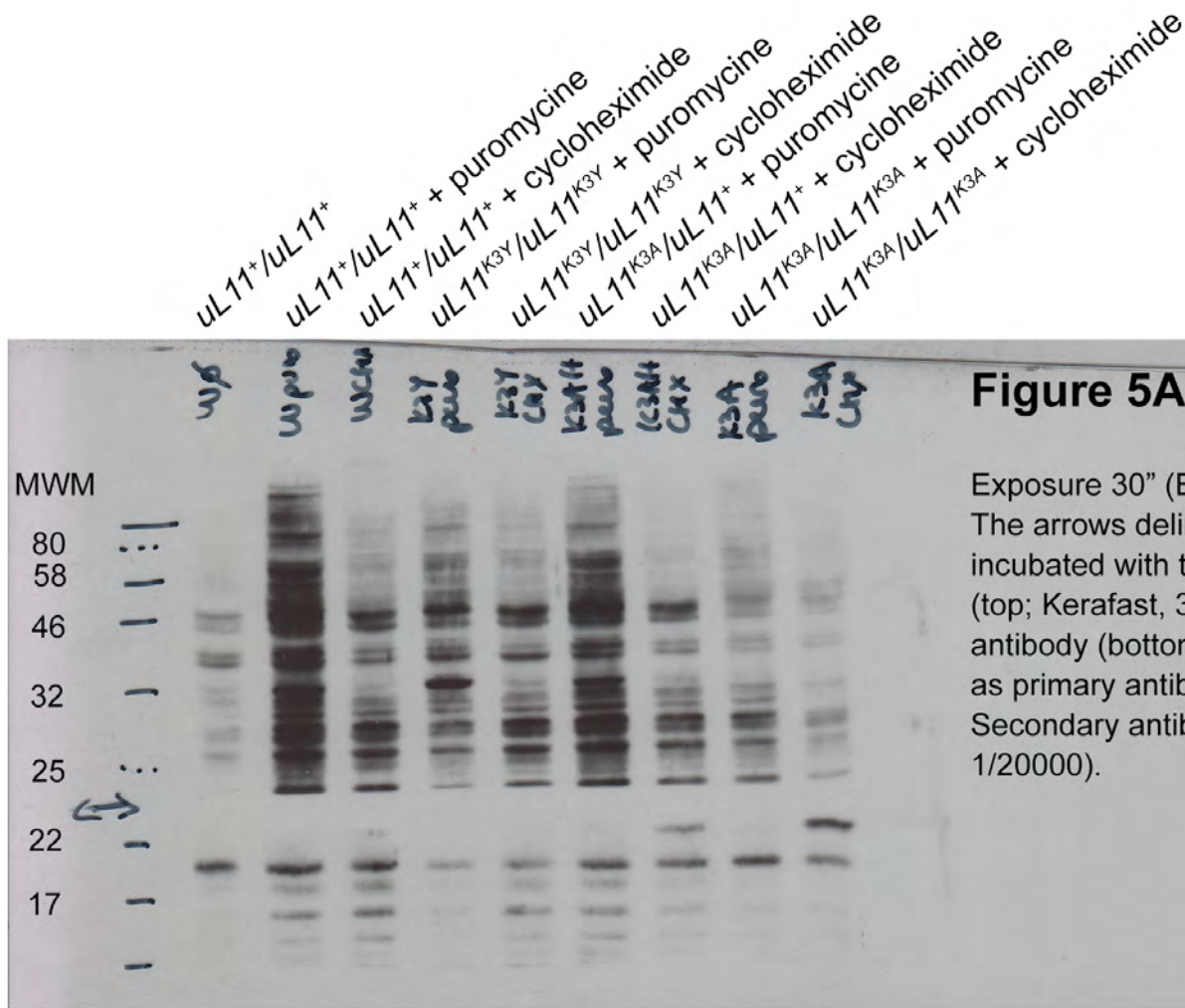
## Figure 2, bottom:

Exposure 2'30"

Primary antibodies:  $\alpha$ -uL11 1/1000

Secondary antibodies:  $\alpha$ -goat IgG 1/10000

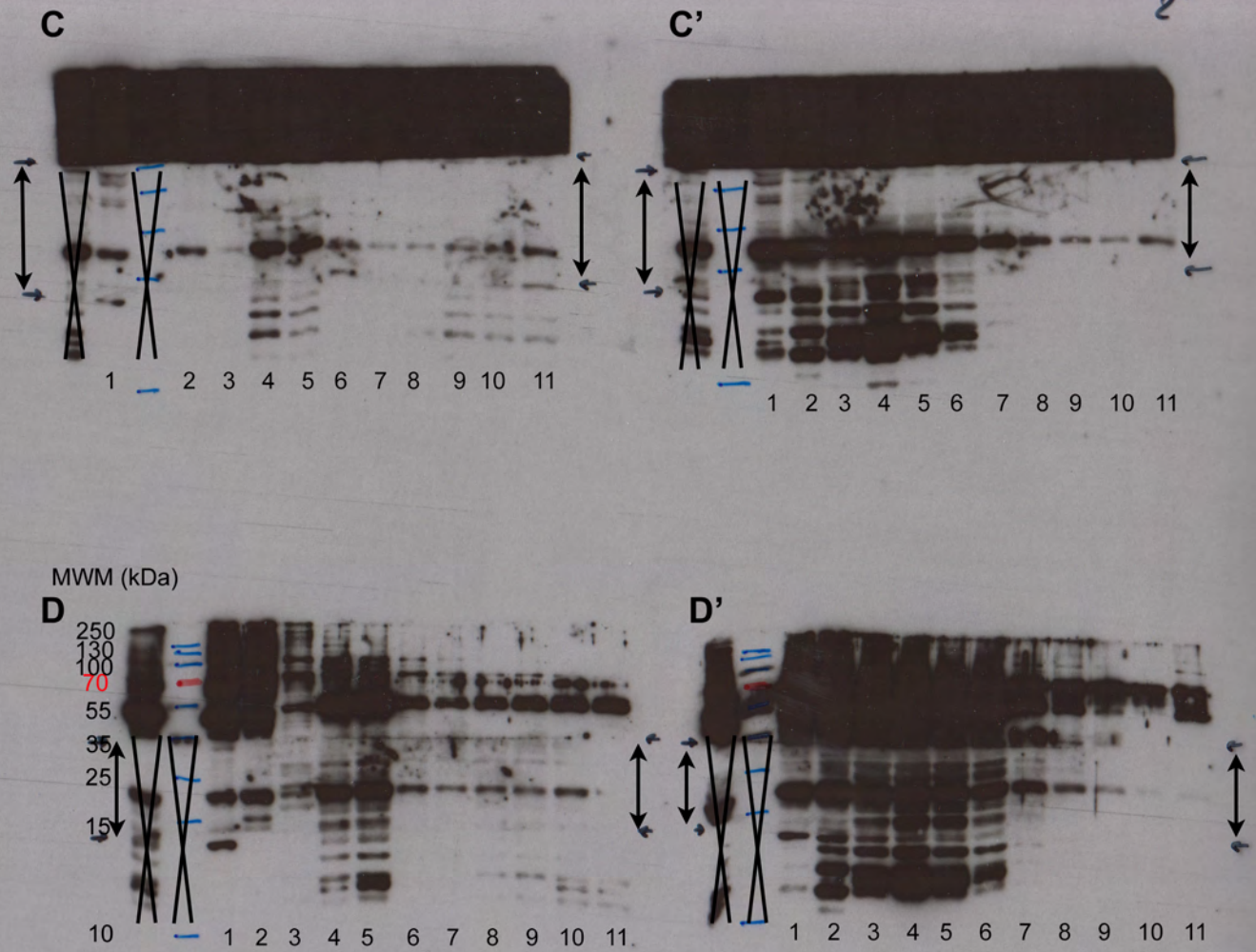




**Figure 5A**

Exposure 30" (ECL).  
 The arrows delimit the part of the Western blot incubated with the mouse anti-puromycin antibody (top; Kerafast, 3RH11; 1/500) or the mouse anti-H3 antibody (bottom) (Diagenode; C15200011; 1/1000), as primary antibodies.  
 Secondary antibodies: anti-mouse (Sigma; NA931; 1/20000).

Figure 5

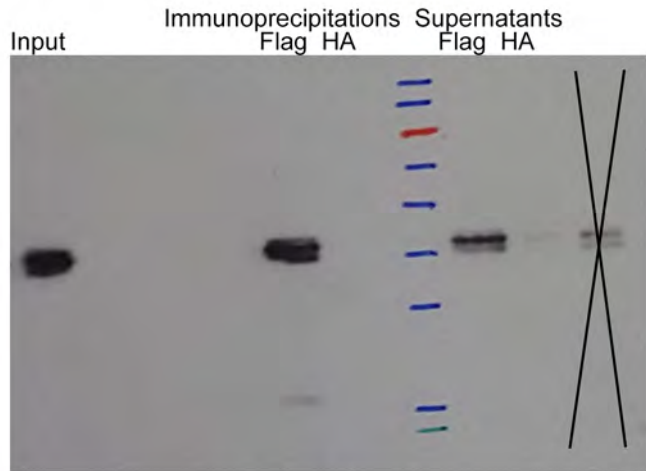


Exposure 2' (ECL).

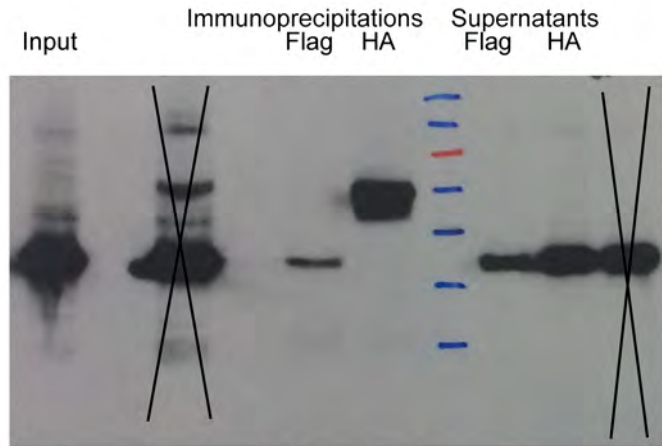
The arrows delimit the part of the Western blot incubated with the anti-HA primary antibody (Sigma F2411, 1/1,000). Secondary antibody: anti-mouse (Sigma NA931; 1/20000).

**Figure 6A**

**IP Flag-CortoCD / co-IP uL11-Myc**



anti-Flag antibody



anti-Myc antibody

Figure 6B

IP Flag-CortoCD / co-IP uL11K3A-Myc /

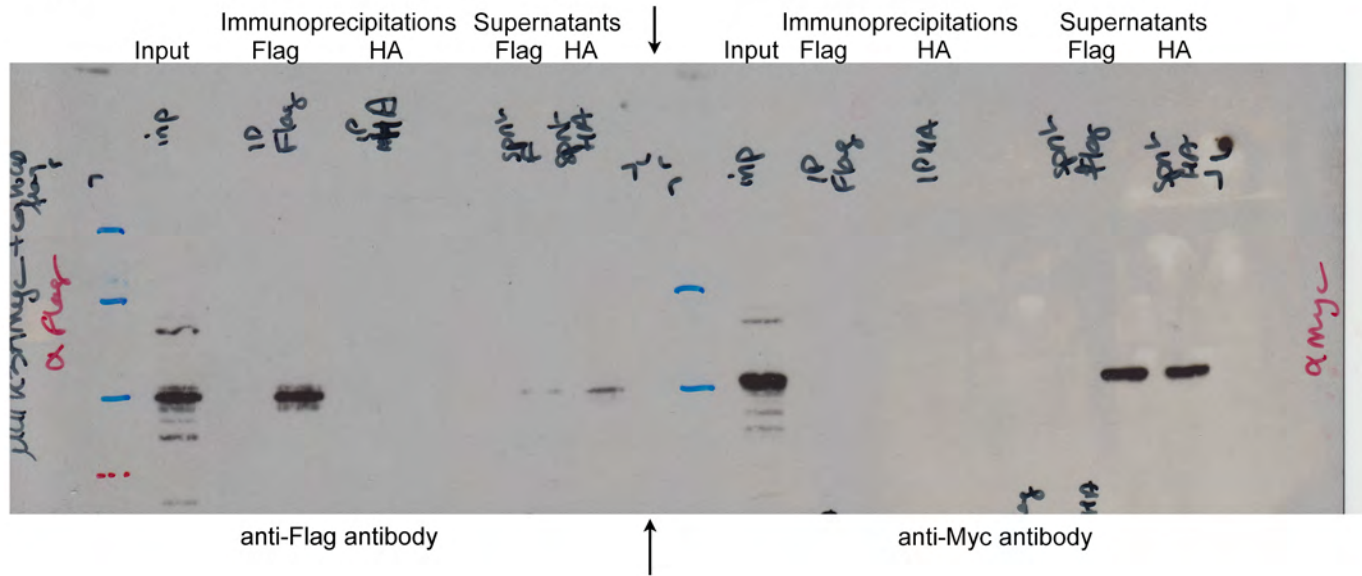
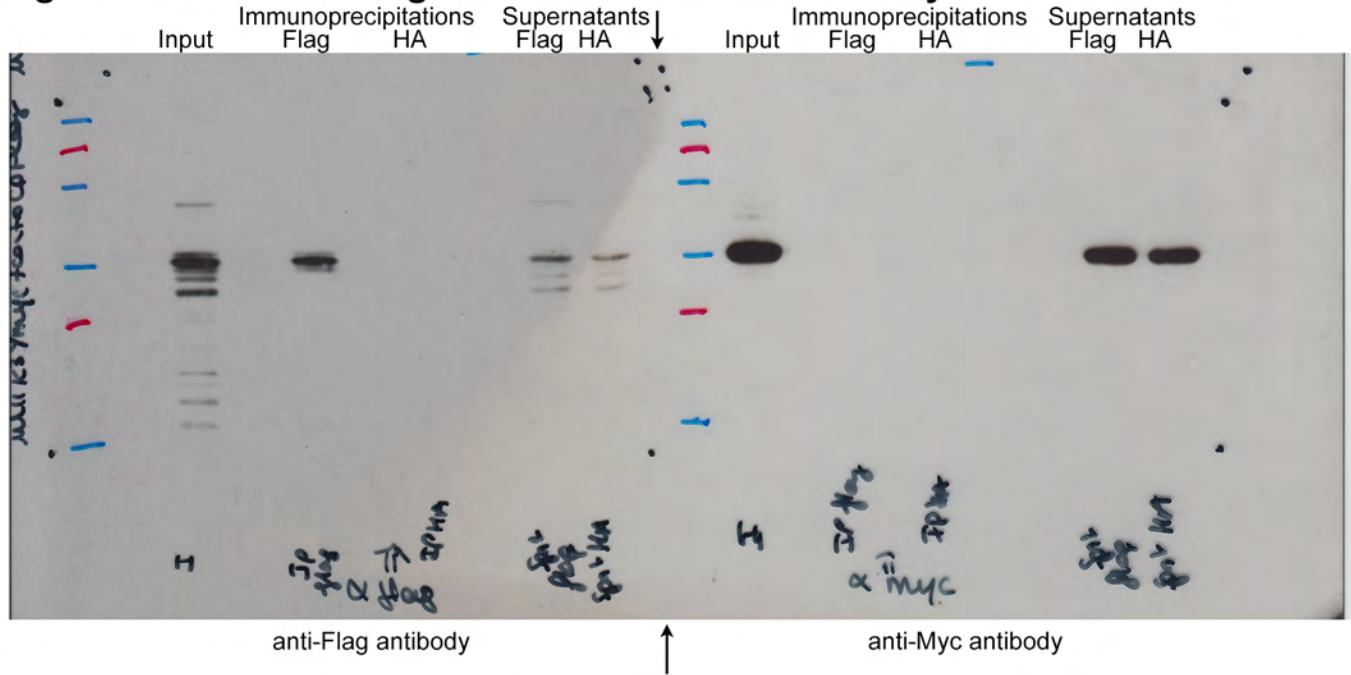
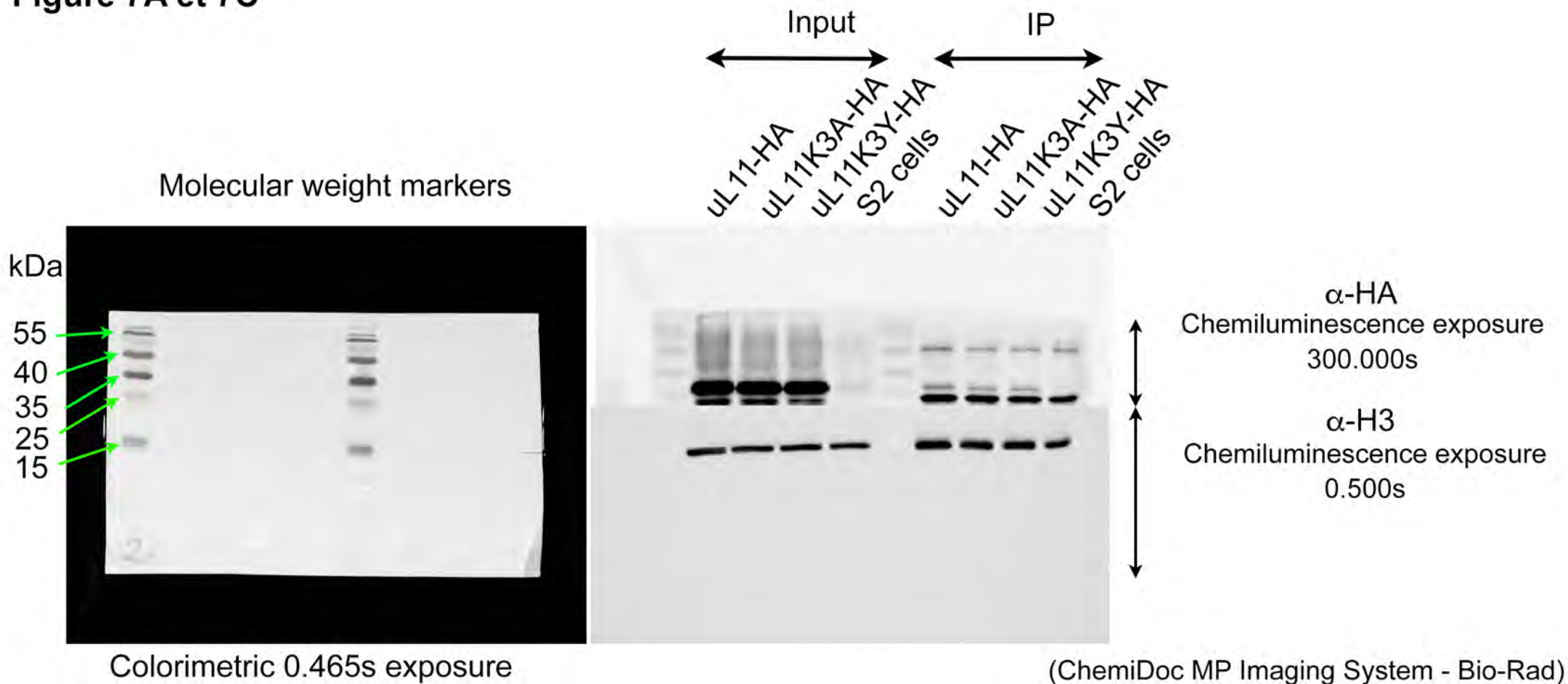


Figure 6C

IP Flag-CortoCD / co-IP uL11K3Y-Myc



**Figure 7A et 7C**



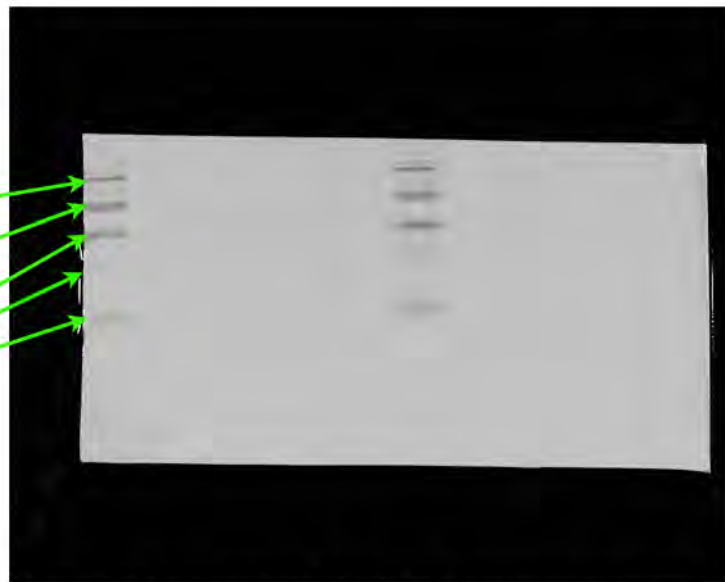


**Figure 7B**

Molecular weight markers

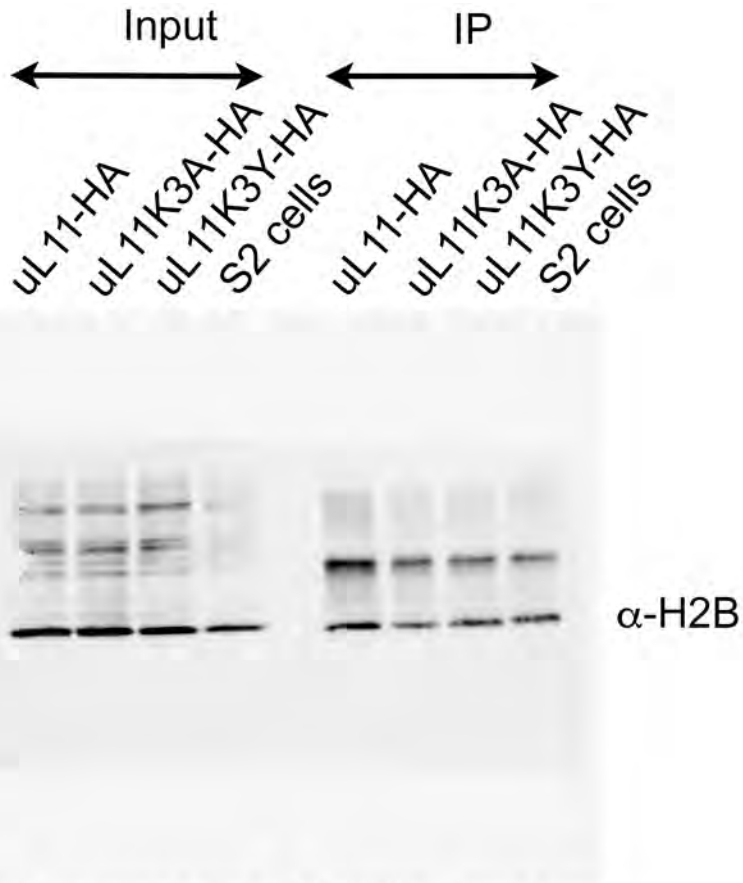
kDa

55  
40  
35  
25  
15



Colorimetric 0.472s exposure

(ChemiDoc MP Imaging System - Bio-Rad)



Chemiluminescence 40.000s exposure

# Supplementary Figure 1

Deposited peptides

