

## Supplementary Online Content

Yamamoto Y, Yoshida N, Yano T, et al. Assessment of outcomes from 1-year surveillance after detection of early gastric cancer among patients with high risk in Japan. *JAMA Netw Open*. 2022;5(8):e2227667. doi:10.1001/jamanetworkopen.2022.27667

**eTable 1.** Lesion Characteristics of Newly Detected Gastric Cancer

**eTable 2.** Clinicopathological Characteristics of Resected Newly Detected Gastric Cancer

**eFigure.** Outcomes of 120 New Gastric Cancer Lesions

This supplementary material has been provided by the authors to give readers additional information about their work.

**eTable 1.** Lesion Characteristics of Newly Detected Gastric Cancer (n = 120)

Lesion characteristics	n (%)
Detection interval after index Endoscopy	
within 8 months	32 (26.7)
9-15 months	88 (73.3)
Location <sup>a</sup>	
Upper	31 (25.8)
Anterior	8 (6.7)
Lesser curvature	9 (7.5)
Posterior	7 (5.8)
Greater curvature	7 (5.8)
Middle	46 (38.3)
Anterior	12 (10.0)
Lesser curvature	21 (17.5)
Posterior	6 (5.0)
Greater curvature	7 (5.8)
Lower	43 (35.8)
Anterior	9 (7.5)
Lesser curvature	9 (7.5)
Posterior	6 (5.0)
Greater curvature	19 (15.8)
Size (endoscopic findings)	
10mm ≤	68 (56.7)
10-20mm	35 (29.1)
20mm >	17 (14.2)
Color	
Redness	74 (61.7)
No change in color	26 (21.7)
Discolored	17 (14.2)
Unknown	3 (2.5)
Macroscopic type <sup>a</sup>	
Elevated	18 (15.0)
Flat/Depressed	97 (80.8)
Unknown	5 (4.2)

<sup>a</sup>Tumor location and macroscopic type were classified according to the Japanese Classification of Gastric Carcinoma.<sup>33</sup>

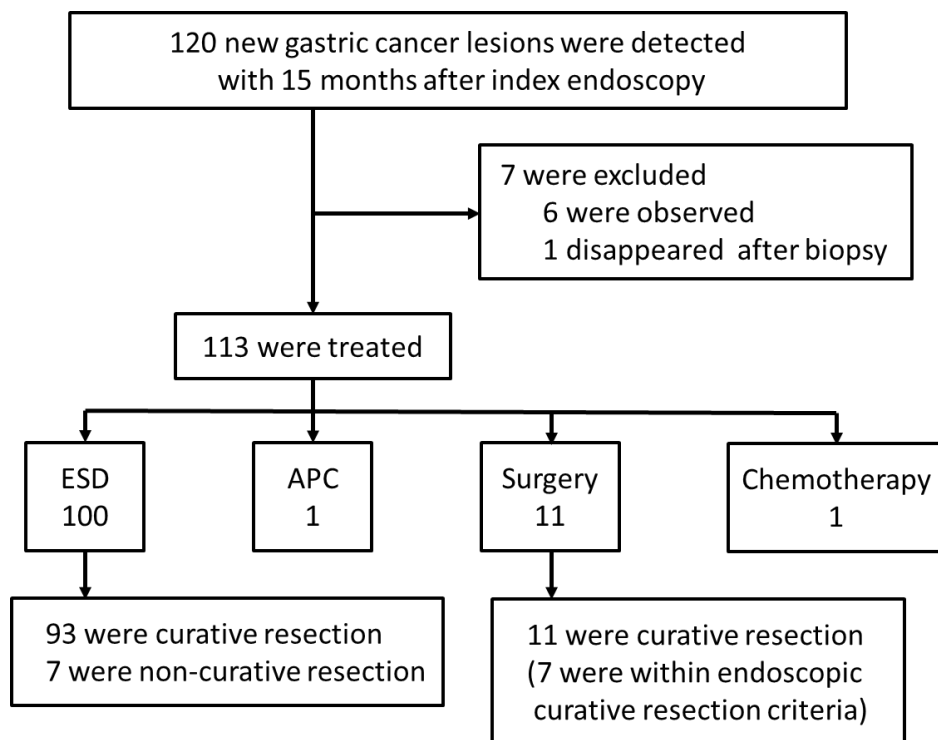
**eTable 2.** Clinicopathological Characteristics of Resected Newly Detected Gastric Cancer (n = 111)

Clinicopathologic characteristics	n (%)
Resection method	
Endoscopic resection	100 (90.1)
Surgery	11 (9.9)
Size (pathologic findings)	
10mm $\leq$	59 (53.1)
10-20mm	36 (32.4)
20mm $>$	16 (14.4)
Histology <sup>a</sup>	
Differentiated	96 (86.5)
Undifferentiated	12 (10.8)
Others	3 (2.7)
Depth of invasion <sup>a</sup>	
pT1a	97 (87.3)
pT1b1	6 (5.4)
pT1b2	6 (5.4)
pT2 or deeper	2 (1.8)
Lymphatic invasion	
Negative	106 (95.5)
Positive	5 (4.5)
Vascular invasion	
Negative	107 (96.4)
Positive	4 (3.6)
Endoscopic curative resection criteria <sup>b</sup>	
Within criteria	100 (90.1)
Beyond criteria	11 (9.9)

<sup>a</sup>Histologic classification and depth of invasion were classified according to the Japanese Classification of Gastric Carcinoma.<sup>33</sup>

<sup>b</sup>Endoscopic curative resection was classified according to the Gastric Cancer Treatment Guidelines by Japanese Gastric Cancer Association.

**eFigure.** Outcomes of 120 New Gastric Cancer Lesions



ESD: endoscopic submucosal dissection; APC: argon plasma coagulation