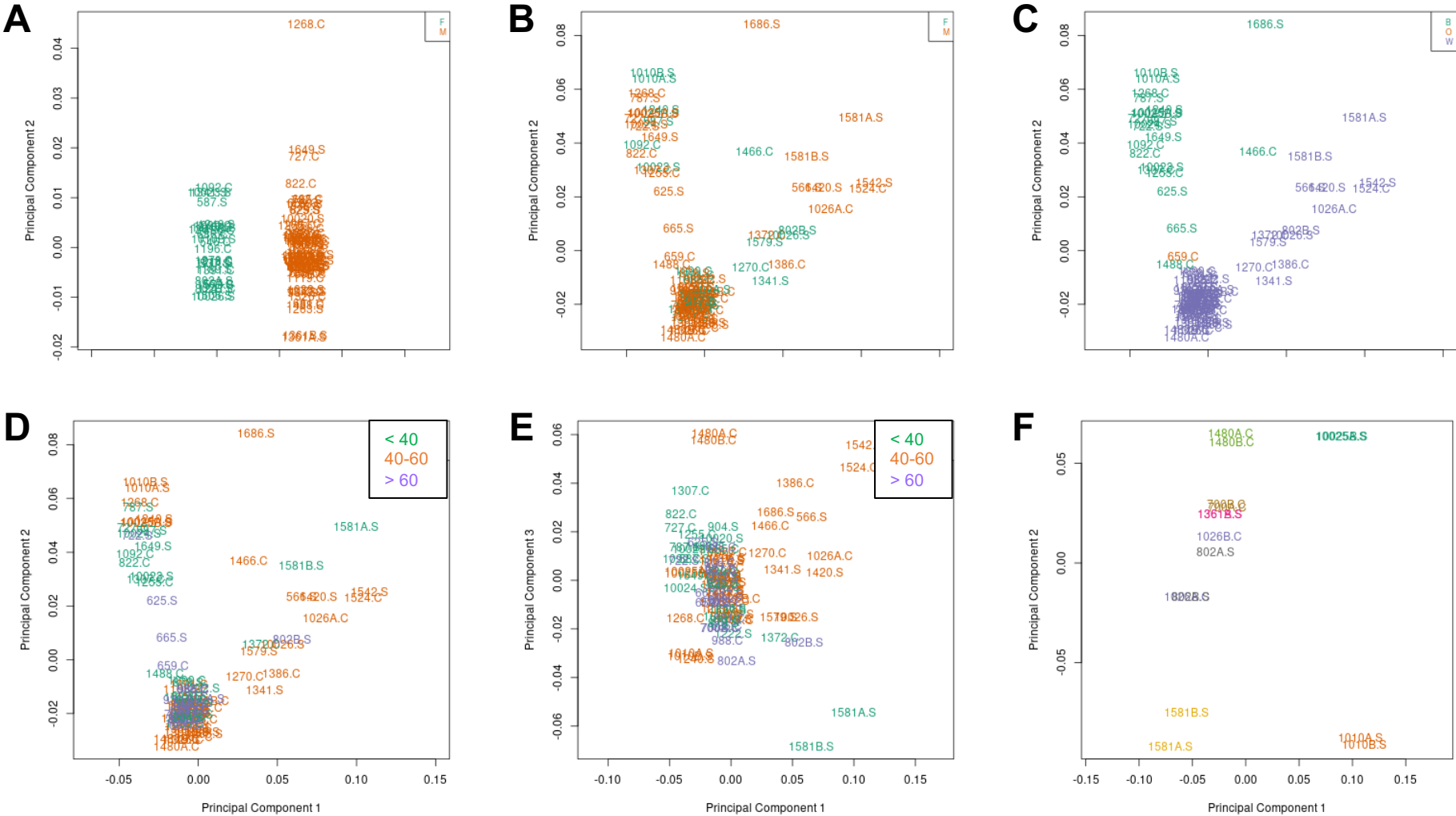


Supplemental Figure 1



Supplemental Figure 1. Mutidimensional scaling (MDS) visualization of similarity among subjects based on EPIC array data. Prior to data filtering, subjects were distinctly segregated by sex (**A**). After data filtering, MDS using data from the 3000 most variable sites was performed and samples no longer segregated by sex (**B**), but segregation by race (**C**) and age (**D**, **E**) became evident. The replicate sample pairs from each of the eight subjects from which replicate samples were collected and assayed co-segregated in MDS space (**F**). S, schizophrenia; C, non-psychiatric comparison; M, male; F, female; B, black; O, other (Asian Indian); W, white.