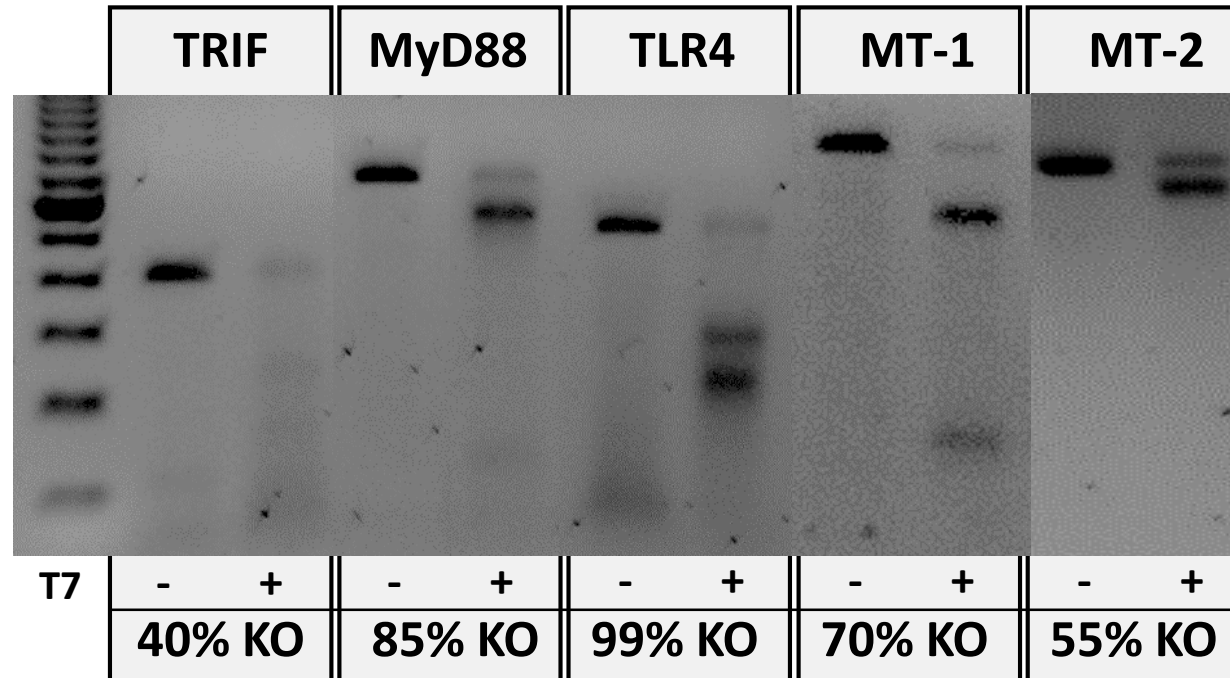
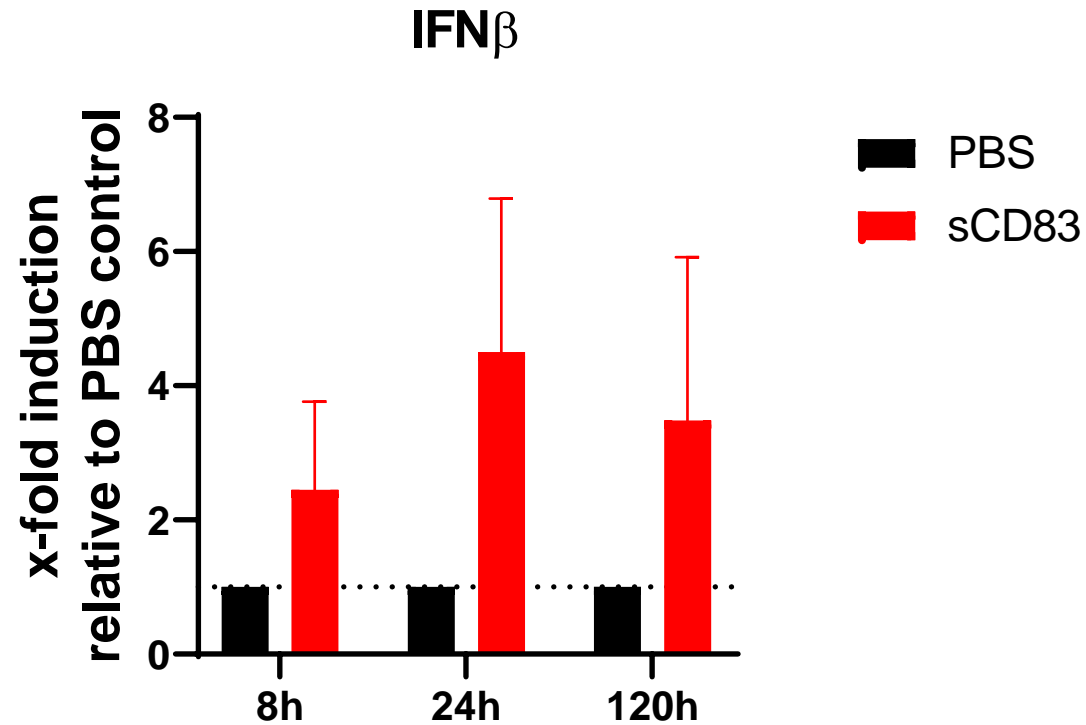


**Supplementary Figure 1:** Representative slides of osteoblast cultures derived from MSCs in the presence of sCD83 (10 µg/ml and 25 µg/ml), PBS or without any additives (upper side). Mineralization activity expressed as integrated density/area (lower side).



**Supplementary Figure 2:** Specific gene targeting efficacy for: TICAM1 (TRIF), MyD88, TLR4, MT-1 and MT-2 as determined by T7-Endonuclease-mediated digestion of heteroduplexes.

# Supplementary Fig. 3



**Supplementary Figure 3:** RT-PCR analyses of *Ifn $\beta$*  expression in human-derived PBMC-cultures were performed 8h, 24h and 120h after the induction of osteoclastogenesis with  $n=3$ . Data are shown as mean  $\pm$  SEM normalized to the corresponding mock-controls.