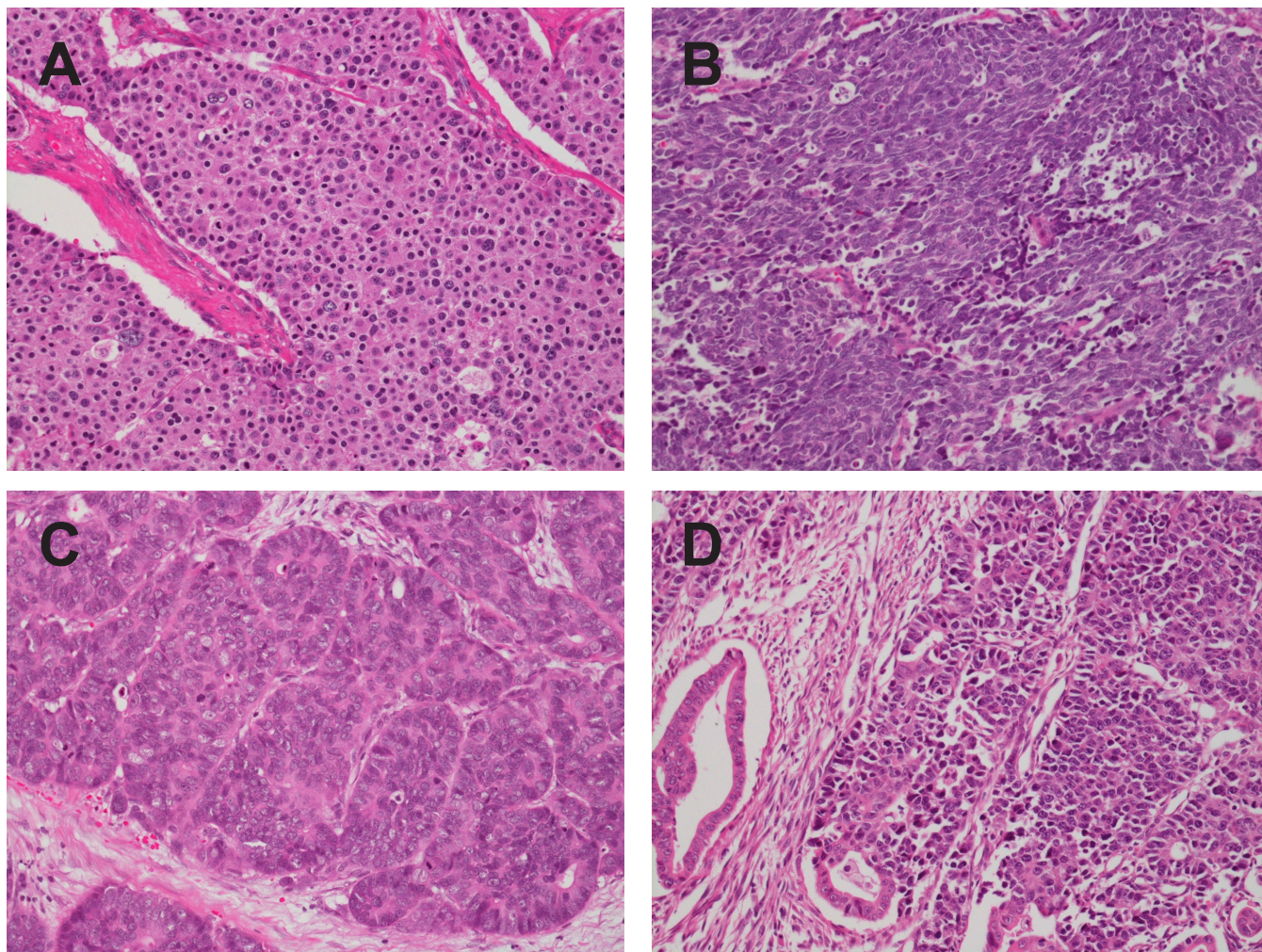


Supplementary Figure S1. Histologic features of neuroendocrine neoplasms of the digestive system.



A, Neuroendocrine tumor of the pancreas (G3) (NE109) characterized by nests of well differentiated neuroendocrine cells with round nuclei with some pleomorphism and abundant cytoplasm. Mitoses are common. **B**, Neuroendocrine carcinoma of the pancreas (small-cell type) (NE070) showing diffuse growth of poorly differentiated neuroendocrine cells with highly atypical hyperchromatic nuclei and scant cytoplasm. **C**, Neuroendocrine carcinoma of the pancreas (large-cell type) (NE110) featuring irregular nests of poorly differentiated neuroendocrine cells with modest cytoplasm and enlarged and irregularly shaped nuclei containing prominent nucleoli. Note numerous mitoses. **D**, Mixed neuroendocrine-non-neuroendocrine neoplasm (MiNEN) of the extrahepatic bile duct (NE092). Note nests of poorly differentiated neuroendocrine cells (large cell type) connecting with gland-forming adenocarcinoma elements.