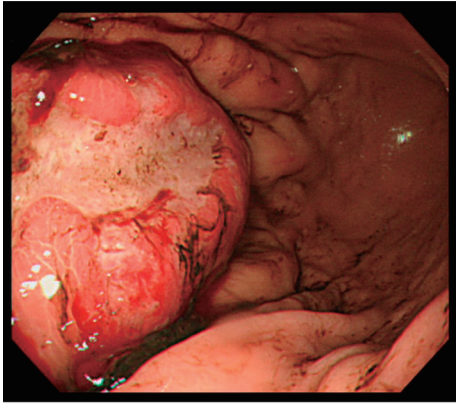
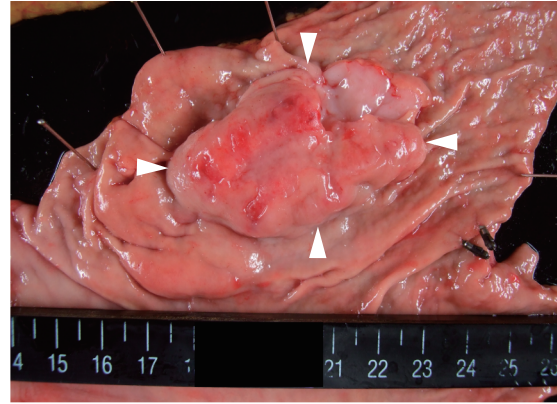


# Supplementary Figure S11. Gastric NEC with the Merkel cell polyomavirus (MCPyV).

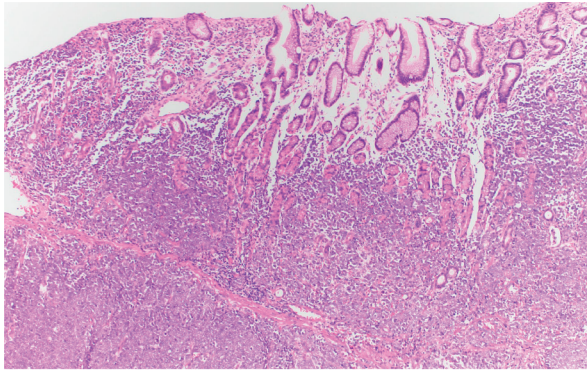
A



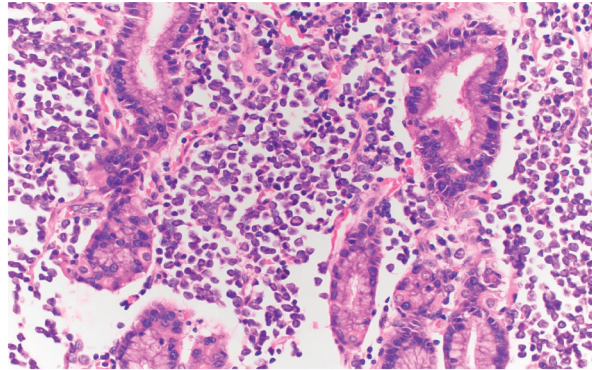
B



C

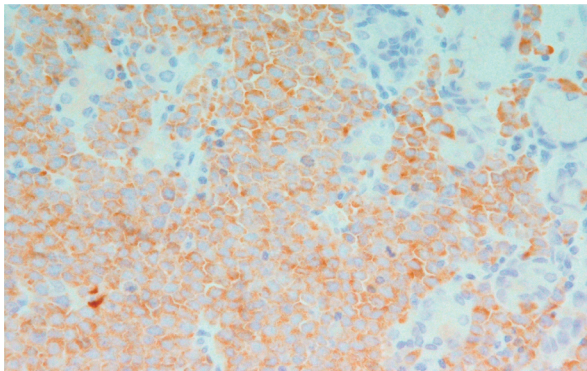


D



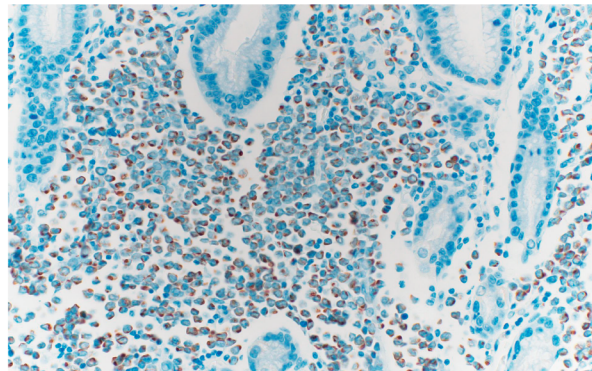
E

Synaptophysin



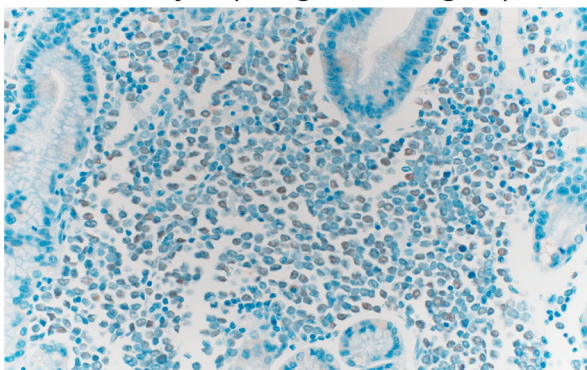
F

CK20

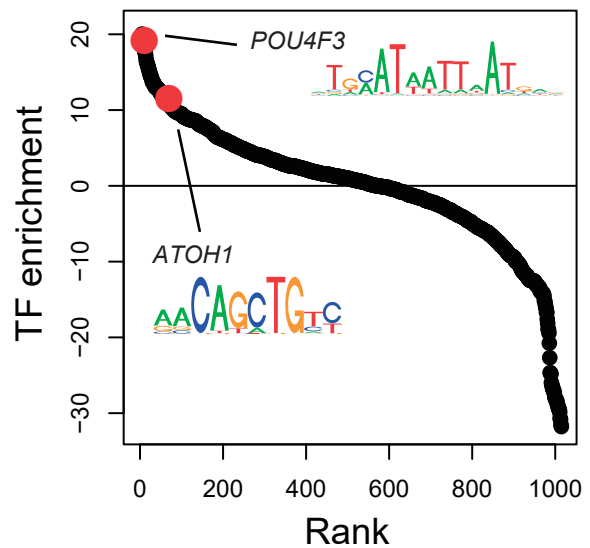


G

MCPyV (Large T antigen)



H



**A**, Upper gastrointestinal endoscopic image showing a large ulcerative mass in the gastric antrum. **B**, Resected specimen of a protruding tumor featuring an ulcerative lesion (Borrmann type II) in the gastric antrum (arrowheads). **C** and **D**, H&E staining shows sheets of monomorphic small cells with round nuclei, pronounced nuclear membranes and finely dispersed chromatin. **E-G**, Tumor cells are strongly positive for synaptophysin and exhibit characteristic paranuclear dot immunoreactivity for cytokeratin 20 (CK20), and nuclear immunoreactivity for the anti-MCPyV antibody (Large T antigen). **H**, Motif enrichment analysis of transcription factors (TFs) in open chromatin regions based on ATAC-seq data revealed enrichment of *POU4F3* and *ATOH1*. The motifs were ranked based on the deviationScores calculated by ChromVAR.