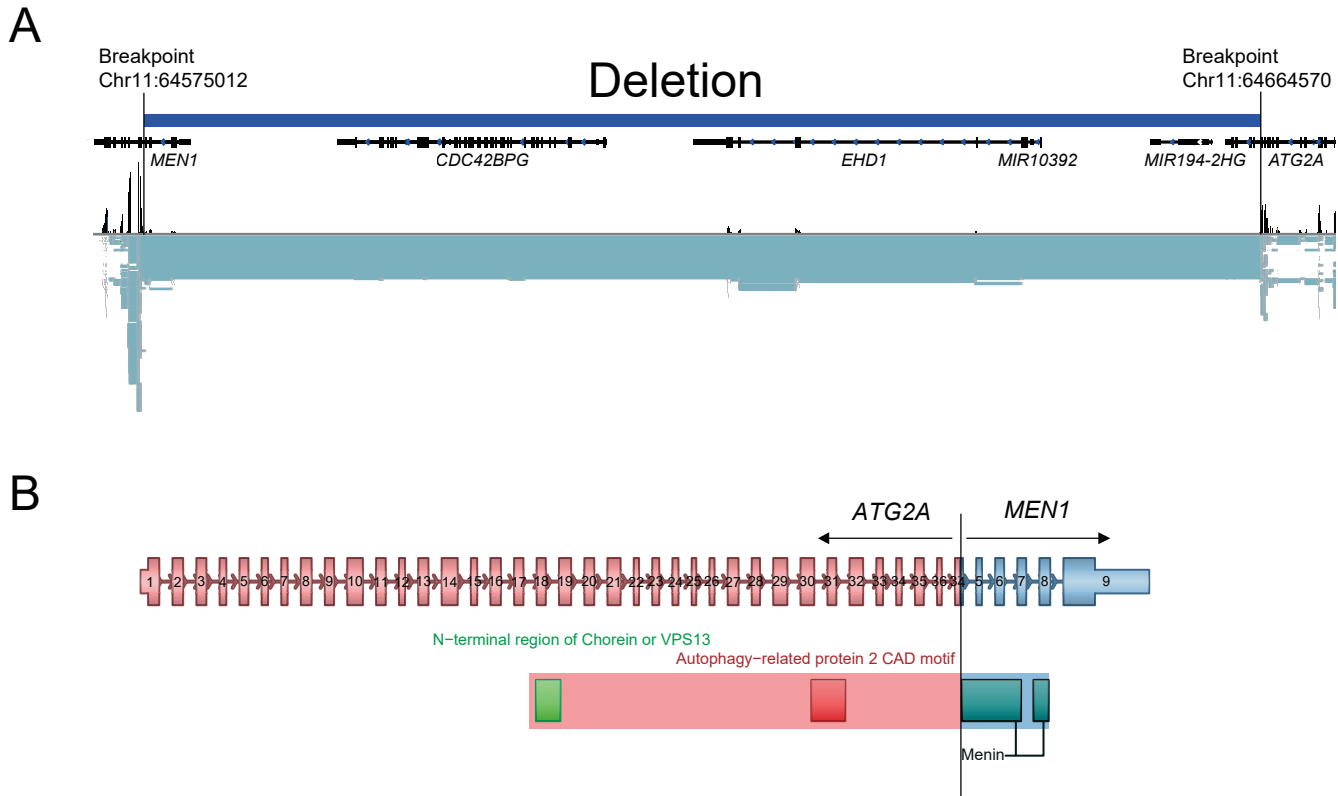


Supplementary Figure S13. Novel Germline *ATG2A-MEN1* fusion transcript.



A, In Case NE042 (23-year-old female), deletion of chromosome 11 was detected by WGS using DNA obtained from normal pancreatic tissue, with breakpoints located in Chr11:64575012 (in *MEN1* exon4) and Chr11:64664570 (in *ATG2A* exon37). Alignment of RNA-seq reads for the reference sequences implicated a *ATG2A-MEN1* fusion gene in IGV. The structure is an out of frame fusion.

B, Visualization of the *ATG2A-MEN1* fusion transcript and conserved protein domains in the fusion protein generated by Arriba.