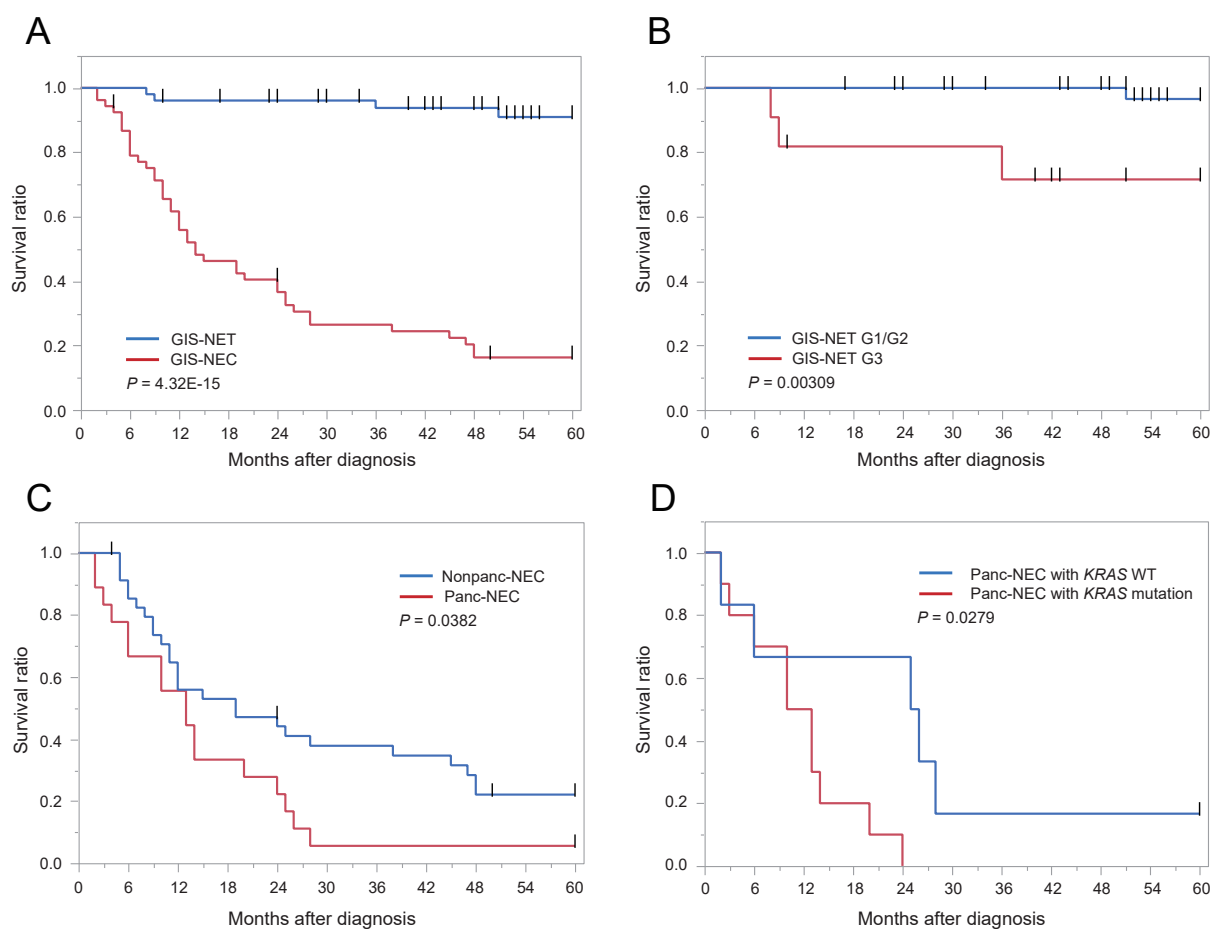


## Supplementary Figure S3. Relationships between clinicopathological features and 5-year disease-specific survival rates.



Kaplan-Meier curves and log-rank tests for patients with GIS-NET versus GIS-NEC (**A**), GIS-NETG1/G2 versus GIS-NETG3 (**B**), Nonpanc-NEC versus Panc-NEC (**C**), Panc-NEC with *KRAS* mutation versus Panc-NEC with *KRAS* wild-type (WT) (**D**).