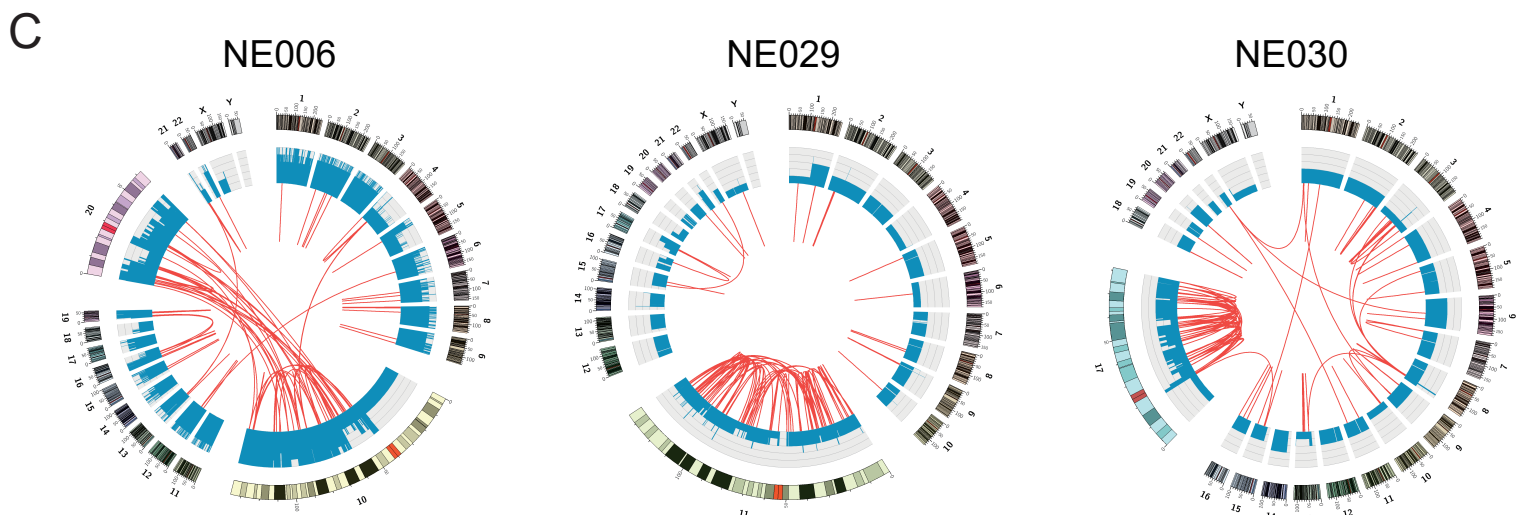
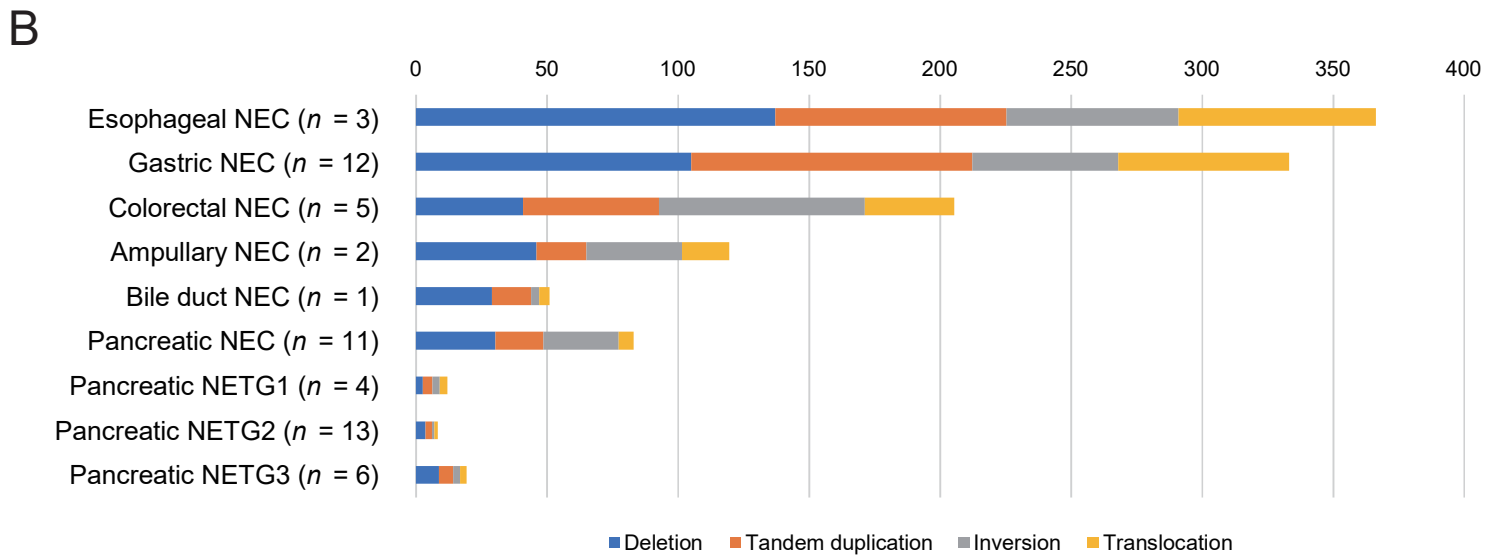
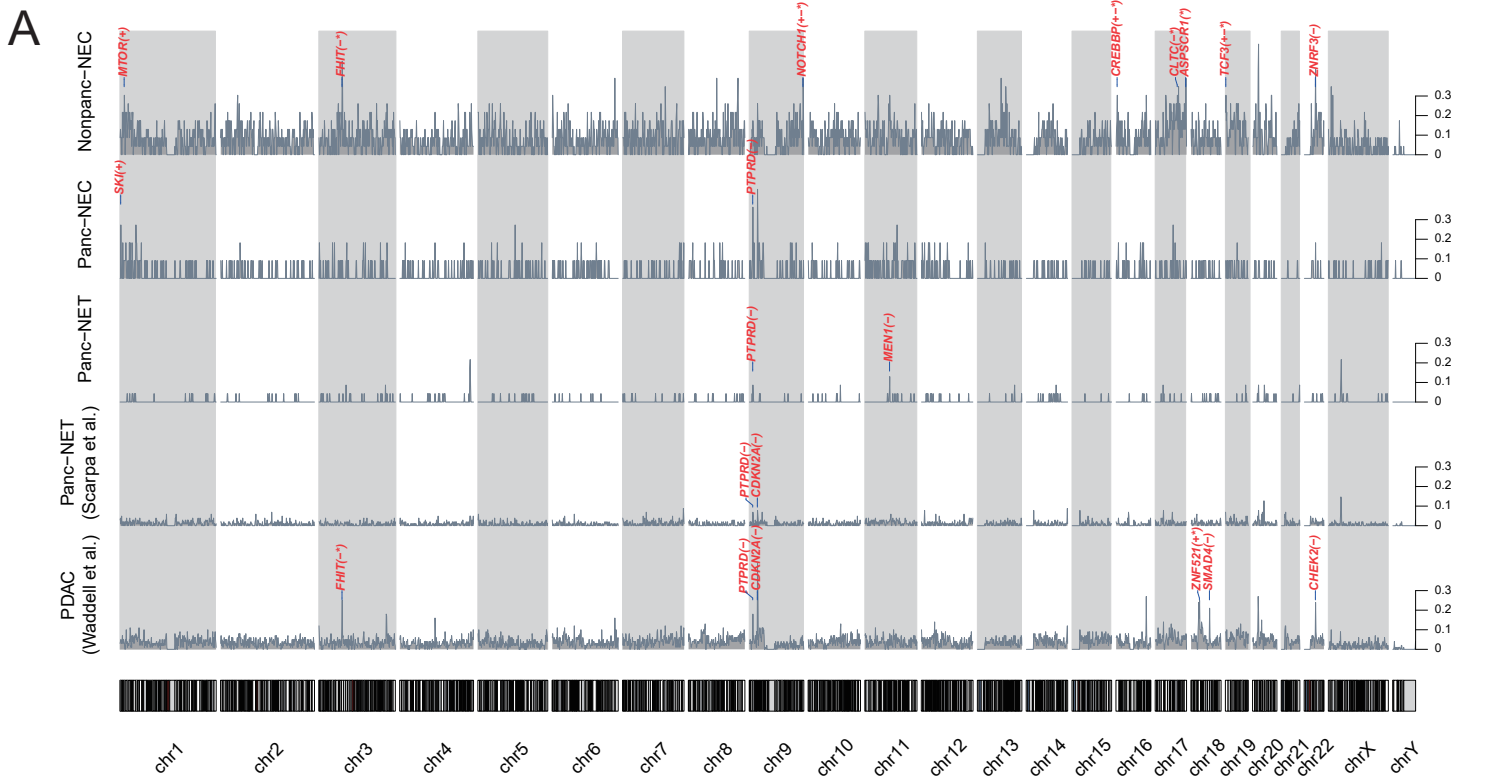


Supplementary Figure S5. Summary of SVs in GIS-NENs.



A, SV frequencies by counting breakpoints of SVs within 1Mb windows genome-wide on scaled chromosomes in Nonpanc-NECs ($n = 23$), Panc-NECs ($n = 11$), Panc-NETs ($n = 23$), pancreatic neuroendocrine tumors diagnosed following the WHO classification 2010 ($n = 102$) as reported by Scarpa et al. (5) and pancreatic ductal adenocarcinomas (PDAC, $n = 100$) as reported by Waddell et al. (9) The genes are annotated according to the COSMIC Cancer Gene Census, using the symbols '+', '-', and '*' indicate oncogene, tumor suppressor gene, and fusion gene, respectively. **B**, Bar chart of average numbers and types of SV calls in NECs by organ site and type of Panc-NET. **C**, Representative circos plots of chromothripsis are shown. Recurrent chromothripsis events for chromosome 11 were detected in four GIS-NECs (Supplementary Table S15).