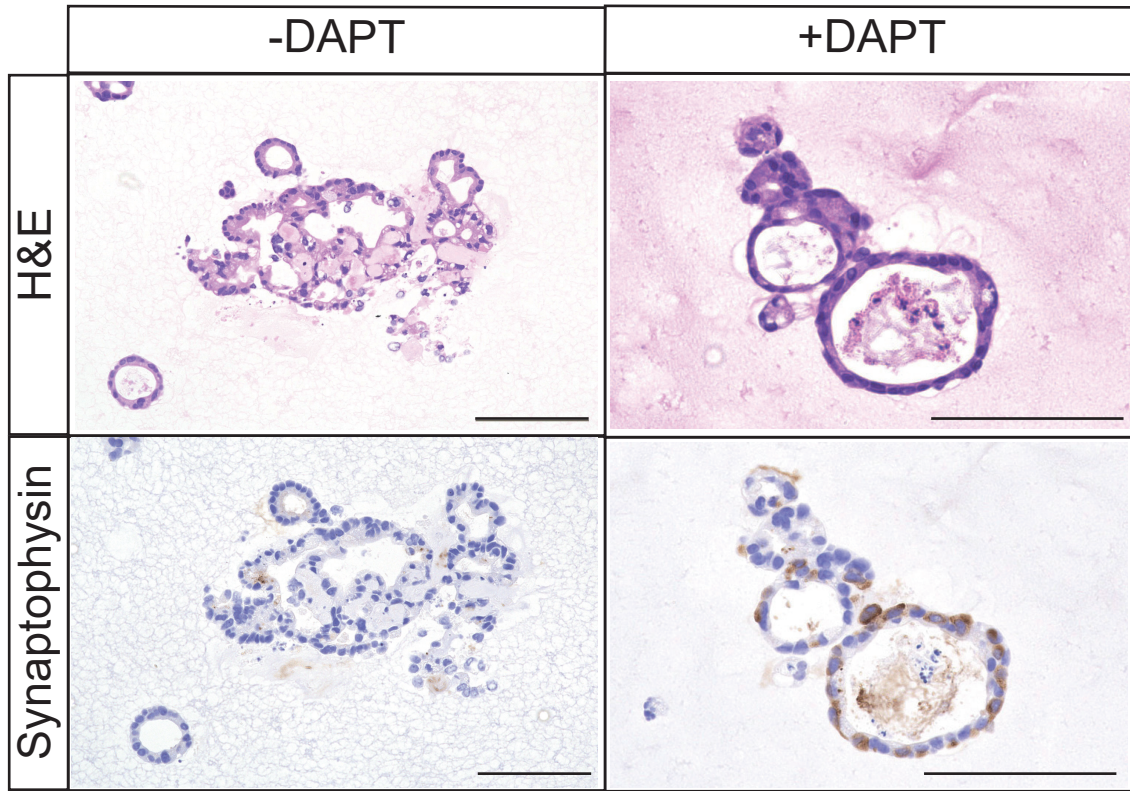


**Supplementary Figure S6. H&E staining and immunohistochemical staining for synaptophysin in gastric organoids with genetic engineering of *TP53* knock-out.**

Gastric organoids with genetic engineering of *TP53* KO



Note increase in synaptophysin expression with the Notch inhibitor, DAPT, in gastric organoids with engineering of *TP53* knock-out (KO). Scale bar, 100  $\mu$ M.