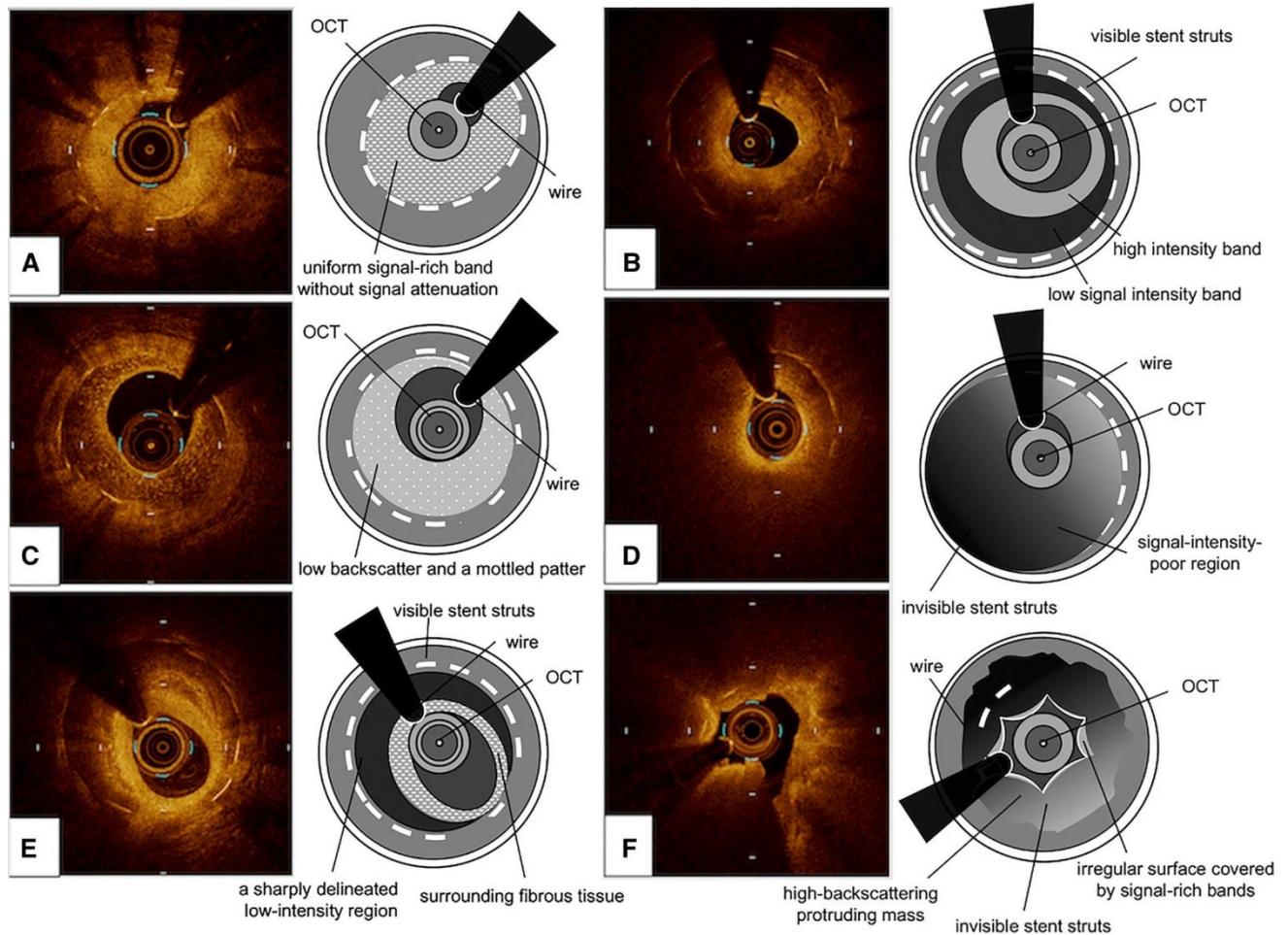


## Supplementary Material

### 1 Supplementary Figures and Tables

#### 1.1 Supplementary Figures



**Supplementary Figure 1.** Novel OCT-based classification of ISR after DES implantation, proposed by Yamamoto et al. A) Type I “Homogeneous high-intensity tissue”. B) Type II “Heterogeneous tissue with signal attenuation”. C) Type III “Speckled heterogeneous tissue”. D) Type IV “Heterogeneous tissue containing poorly delineated region with invisible strut”. E) Type V “Heterogeneous tissue containing sharply delineated low-intensity region”. F) Type VI “Bright protruding tissue with an irregular surface”. Reproduced with permission from (121).