

SAMPLE ID: B1-0

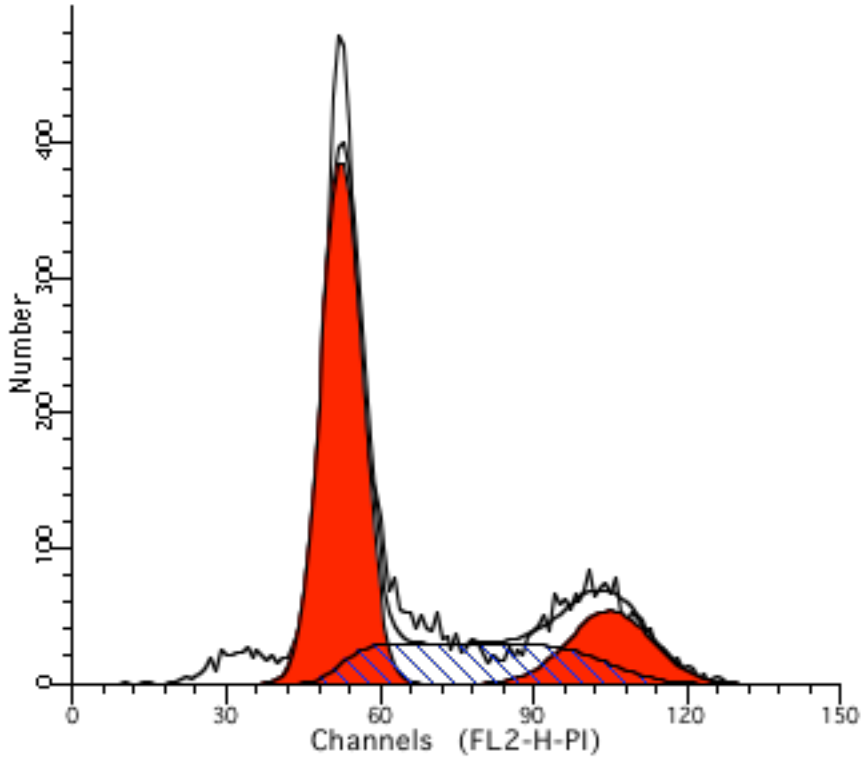
File analyzed: 111  
 Date analyzed: 30-Dec-2021  
 Model: 1nn0A\_DSf  
 Analysis type: Manual analysis

Diploid: 100.00 %  
 Dip G1: 61.37 % at 54.79  
 Dip G2: 17.39 % at 107.43  
 Dip S: 21.24 % G2/G1: 1.96  
 %CV: 7.29

Total S-Phase: 21.24 %  
 Total B.A.D.: 0.00 % no debris no aggs

Apoptosis: 0.93 % Mean: 22.88

Debris: %  
 Aggregates: 0.00 %  
 Modeled events: 5643  
 All cycle events: 5590  
 Cycle events per channel: 104  
 RCS: 2.112



SAMPLE ID: B1-1

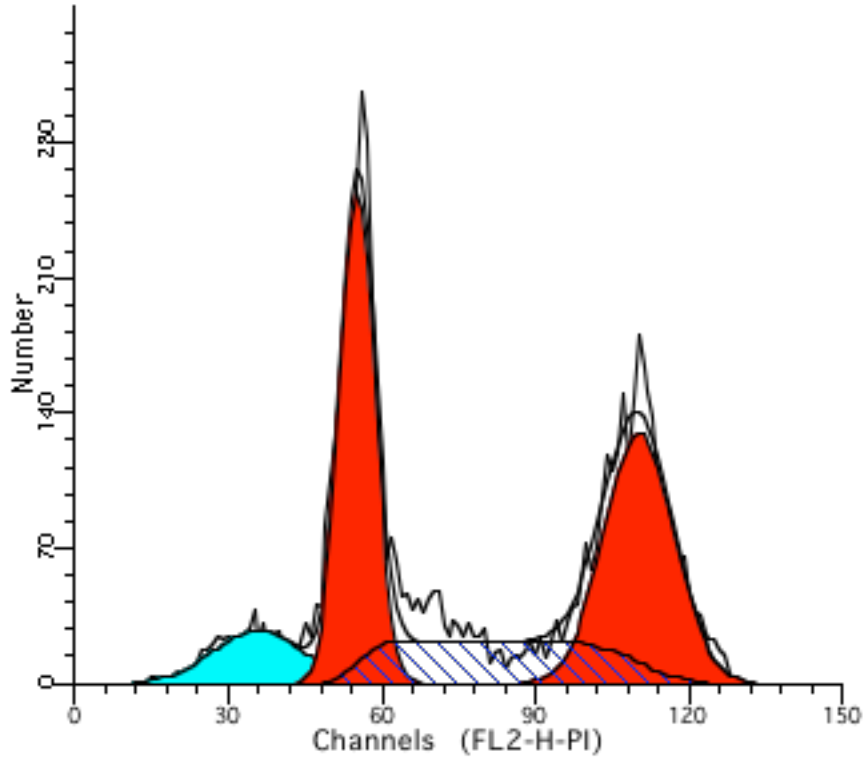
File analyzed: 112  
 Date analyzed: 30-Dec-2021  
 Model: 1nn0A\_DSF  
 Analysis type: Manual analysis

Diploid: 100.00 %  
 Dip G1: 59.88 % at 52.53  
 Dip G2: 16.52 % at 104.83  
 Dip S: 23.59 % G2/G1: 2.00  
 %CV: 7.63

Total S-Phase: 23.59 %  
 Total B.A.D.: 0.00 % no debris no aggs

Apoptosis: % Mean:

Debris: %  
 Aggregates: 0.00 %  
 Modeled events: 6506  
 All cycle events: 6506  
 Cycle events per channel: 122  
 RCS: 4.237



SAMPLE ID: B1-2

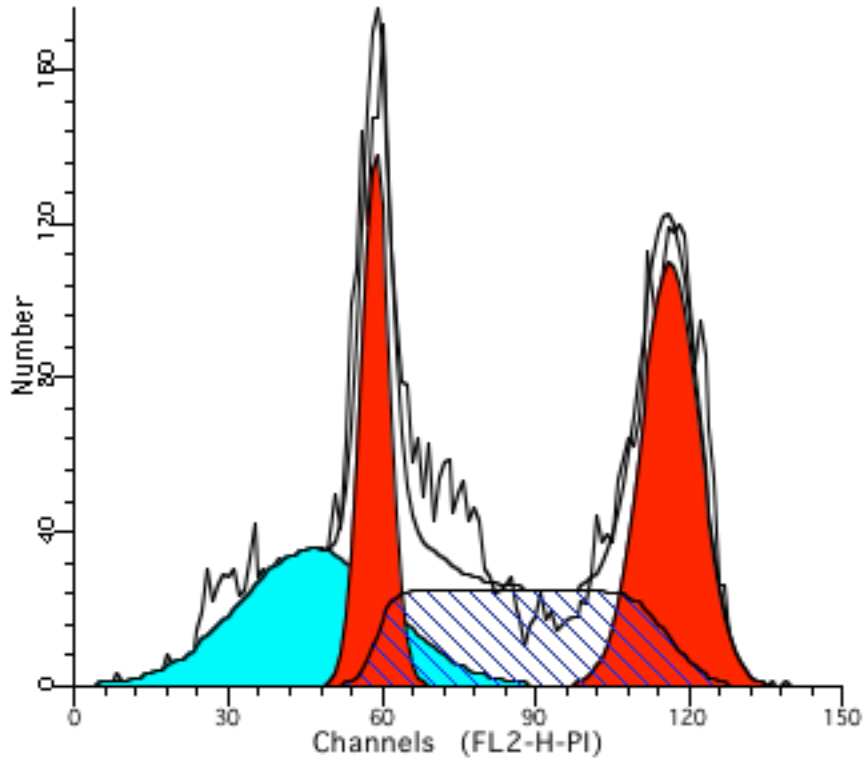
File analyzed: 113  
 Date analyzed: 30-Dec-2021  
 Model: 1nn0A\_DSF  
 Analysis type: Manual analysis

Diploid: 100.00 %  
 Dip G1: 38.96 % at 55.16  
 Dip G2: 39.68 % at 110.16  
 Dip S: 21.36 % G2/G1: 2.00  
 %CV: 6.17

Total S-Phase: 21.36 %  
 Total B.A.D.: 0.00 % no debris no aggs

Apoptosis: 9.64 % Mean: 35.72

Debris: %  
 Aggregates: 0.00 %  
 Modeled events: 6174  
 All cycle events: 5579  
 Cycle events per channel: 100  
 RCS: 2.714



SAMPLE ID: B1-3

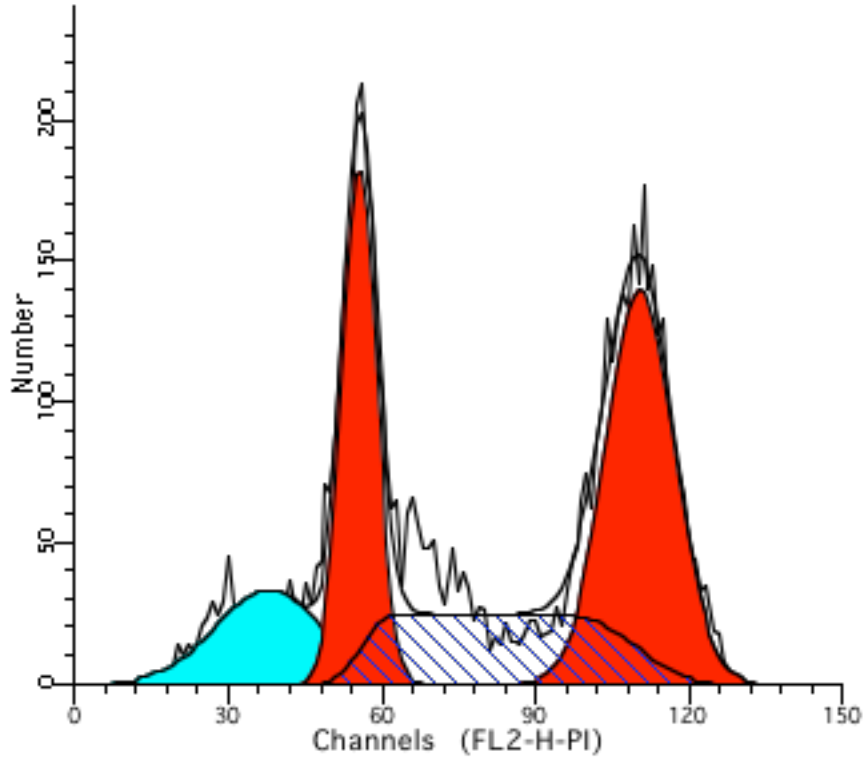
File analyzed: 114  
 Date analyzed: 30-Dec-2021  
 Model: 1nn0A\_DSF  
 Analysis type: Manual analysis

Diploid: 100.00 %  
 Dip G1: 24.81 % at 58.73  
 Dip G2: 39.20 % at 116.27  
 Dip S: 35.99 % G2/G1: 1.98  
 %CV: 4.80

Total S-Phase: 35.99 %  
 Total B.A.D.: 0.00 % no debris no aggs

Apoptosis: 24.55 % Mean: 46.67

Debris: %  
 Aggregates: 0.00 %  
 Modeled events: 5258  
 All cycle events: 3967  
 Cycle events per channel: 68  
 RCS: 3.408



SAMPLE ID: B1-4

File analyzed: 115  
 Date analyzed: 30-Dec-2021  
 Model: 1nn0A\_DSF  
 Analysis type: Manual analysis

Diploid: 100.00 %  
 Dip G1: 29.55 % at 55.57  
 Dip G2: 45.04 % at 110.35  
 Dip S: 25.41 % G2/G1: 1.99  
 %CV: 6.03

Total S-Phase: 25.41 %  
 Total B.A.D.: 0.00 % no debris no aggs

Apoptosis: 14.16 % Mean: 37.80

Debris: %  
 Aggregates: 0.00 %  
 Modeled events: 6083  
 All cycle events: 5222  
 Cycle events per channel: 94  
 RCS: 2.472