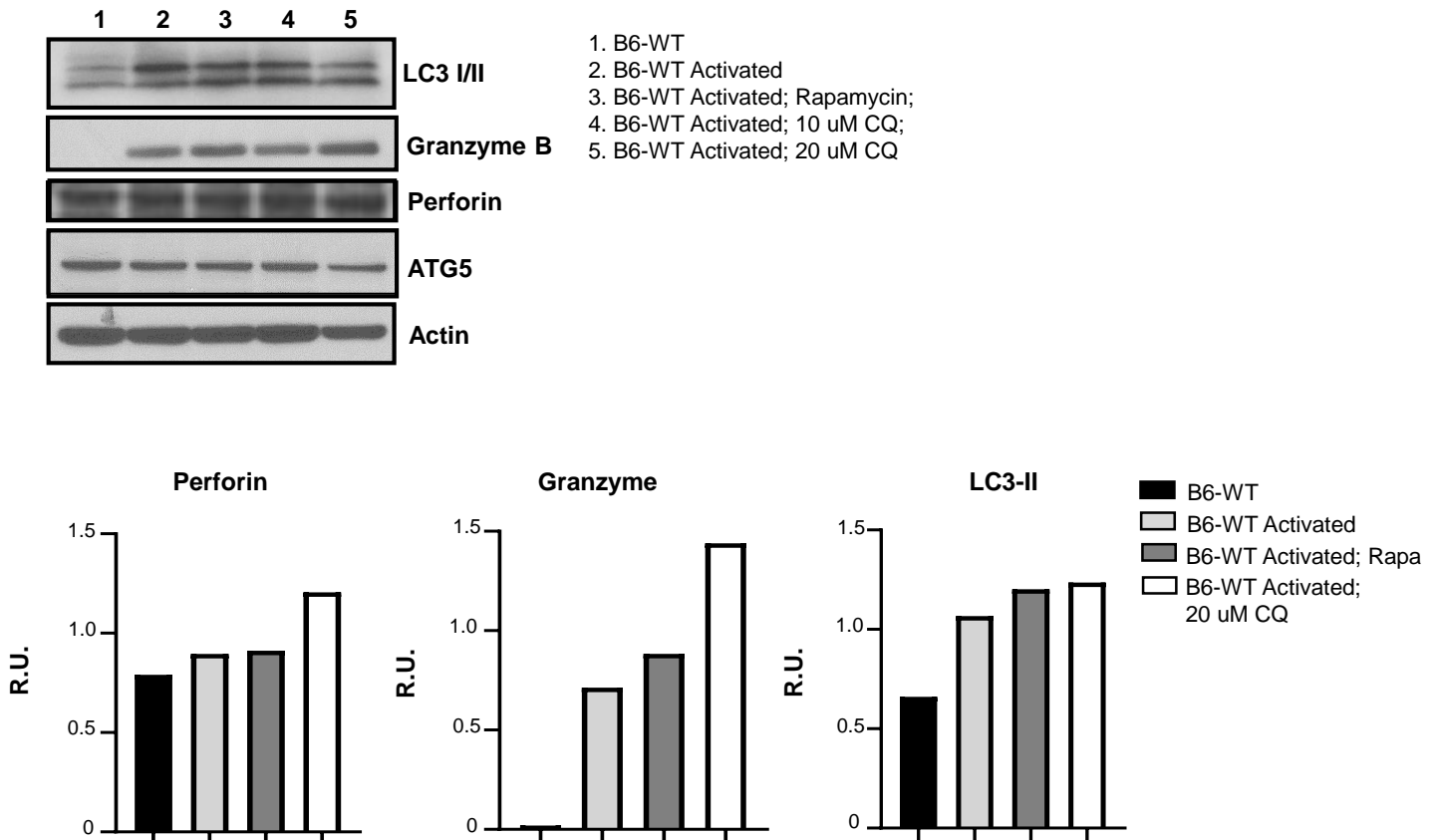


a

SFig. 4 ATG5 deficiency enhances T cell cytotoxicity.

An MLR was performed using purified T cells from WT-B6 and B6-ATG5^{-/-} mice. Cells were stimulated for 4 days in a bulk MLR with allogeneic irradiated (30Gy) whole splenocytes from BALB/c mice in order to generate activated CD8-positive T cells. Cells were cultured with either no treatment, rapamycin or hydroxyl-chloroquine (CQ) (a) Cells were harvested and pelleted for protein isolation. Control T cells (top panel) were harvest from spleens of wildtype mice and processed for protein isolation. Quantitation of protein expression (bottom panel) was done using ImageJ software. Representative grafts are from duplicate experiments.