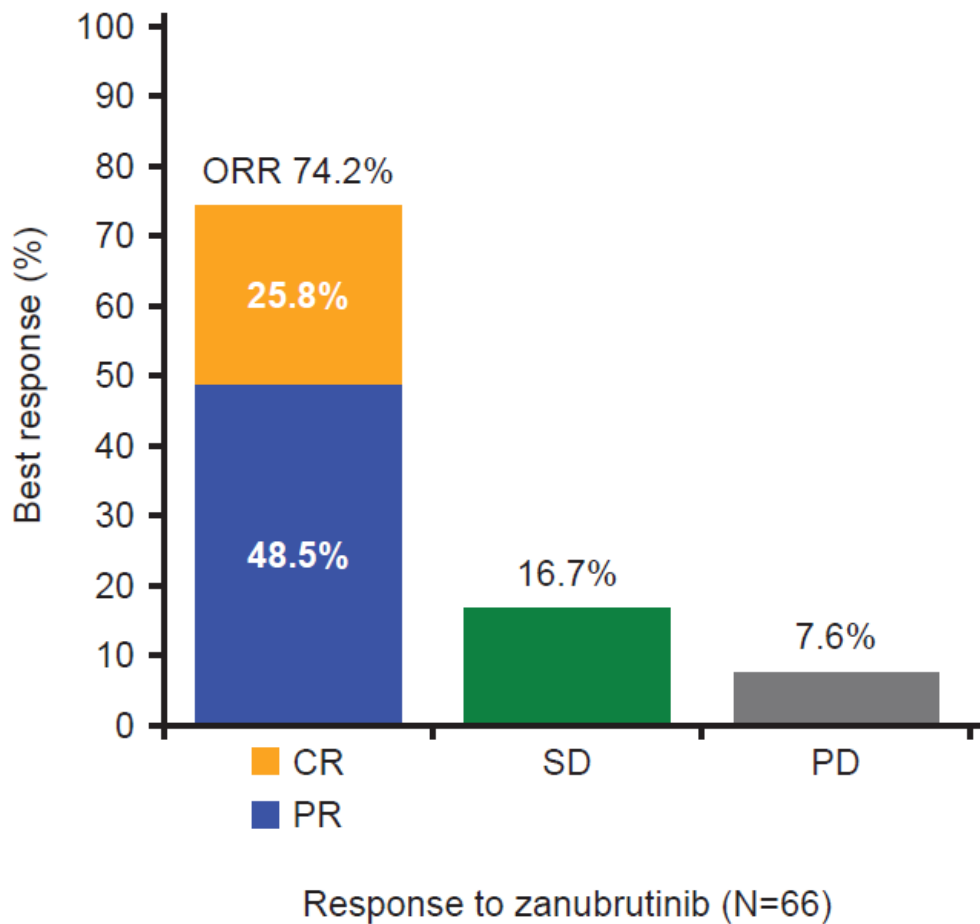


## Supplementary Data

**Figure S1.**

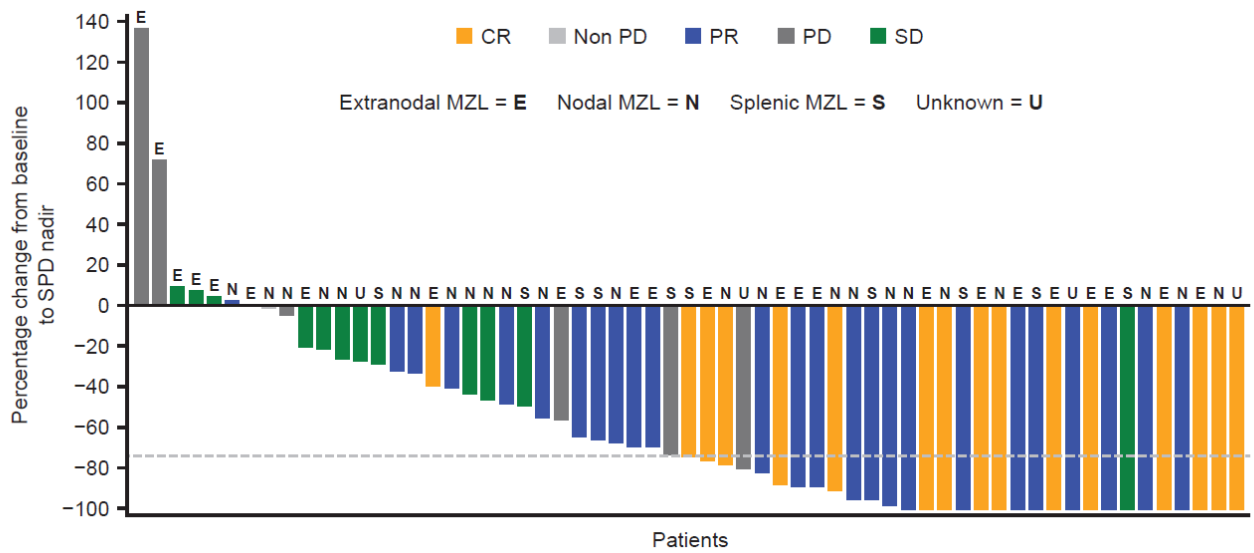
ORR per investigator assessment based on Lugano classification (13) for MZL patients in the MAGNOLIA study (BGB-3111-214).



Abbreviations: MZL, marginal zone lymphoma; ORR, overall response rate.

**Figure S2.**

Waterfall plot demonstrating change from baseline in target lesion SPD by BOR per IRC assessment based on Lugano classification (13) for MZL patients in the MAGNOLIA study (BGB-3111-214). Only patients with non-missing BOR and SPD percentage change were included (n=61). Dashed lines = median reduction in SPD (-74%).



Abbreviations: BOR, best overall response; CR, complete response; IRC, independent review committee; MZL, marginal zone lymphoma; PD, progressive disease; PR, partial response; SD; stable disease; SPD, sum of products of perpendicular diameters.