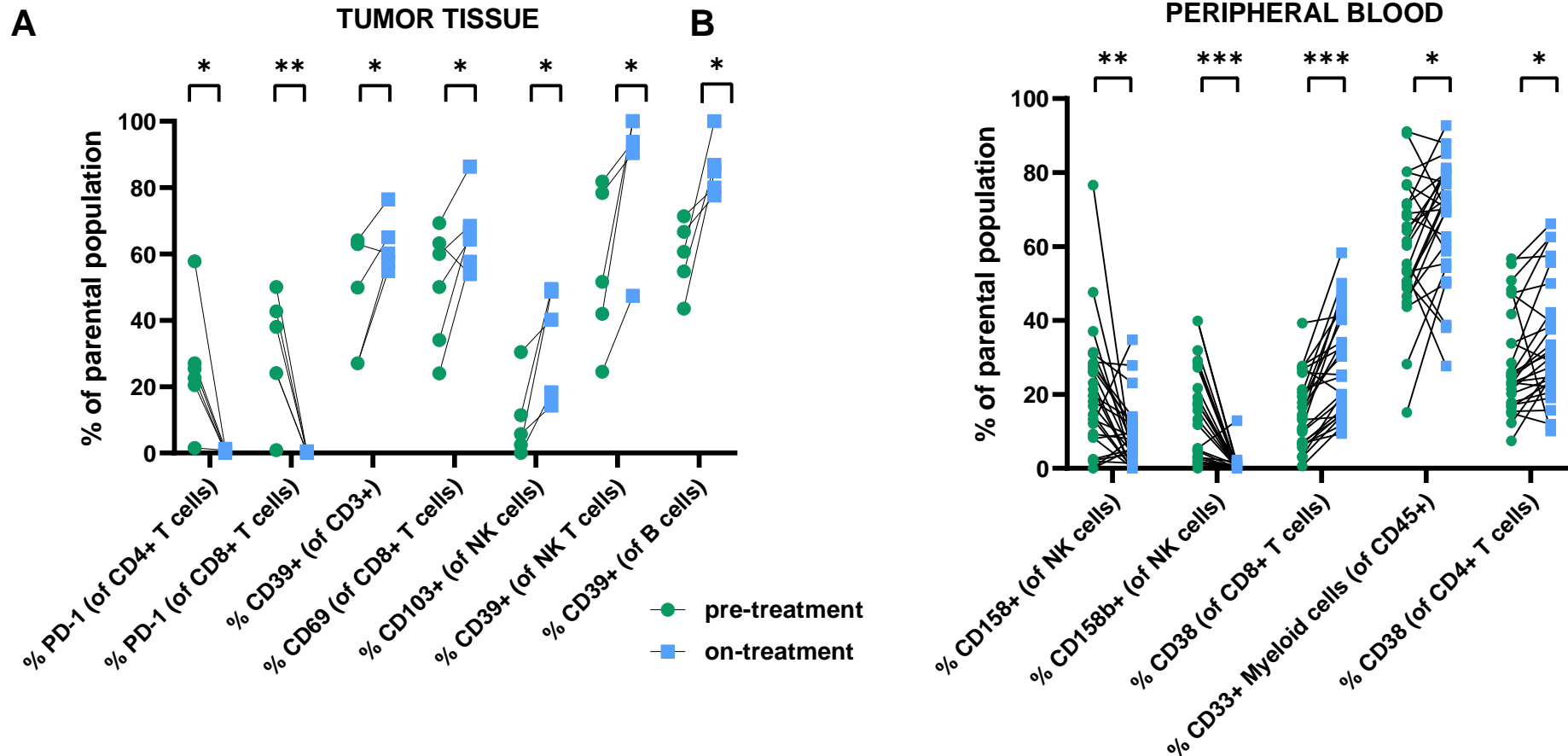


Supplemental Figure 1. Immunoprofiling changes among Recurrent, Resectable Squamous cell carcinoma of the head and neck patients treated with Neoadjuvant and Adjuvant Nivolumab and Lirilumab



Multiparametric flow cytometry used for immunoprofiling among paired **(A)** tumor samples (N=6) and paired **(B)** peripheral blood (N=27) obtained before and on-treatment with (neo)adjuvant immunotherapy (nivolumab and lirilumab). Each scatter plot column reflects matched pre-treatment (at registration) and post-treatment (at salvage surgery) patient samples. Immune parameters are noted along the x-axis and measured as a (%) percentage of the total parental immune cell population. Multiparametric flow immune parameters shown are those that achieved statistical significance (*) $p < 0.05$, (**) $p < 0.01$, (***) $p < 0.001$ when measured among all trial samples before and after immunotherapy exposure [paired t-test, correction for multiple tests of association].