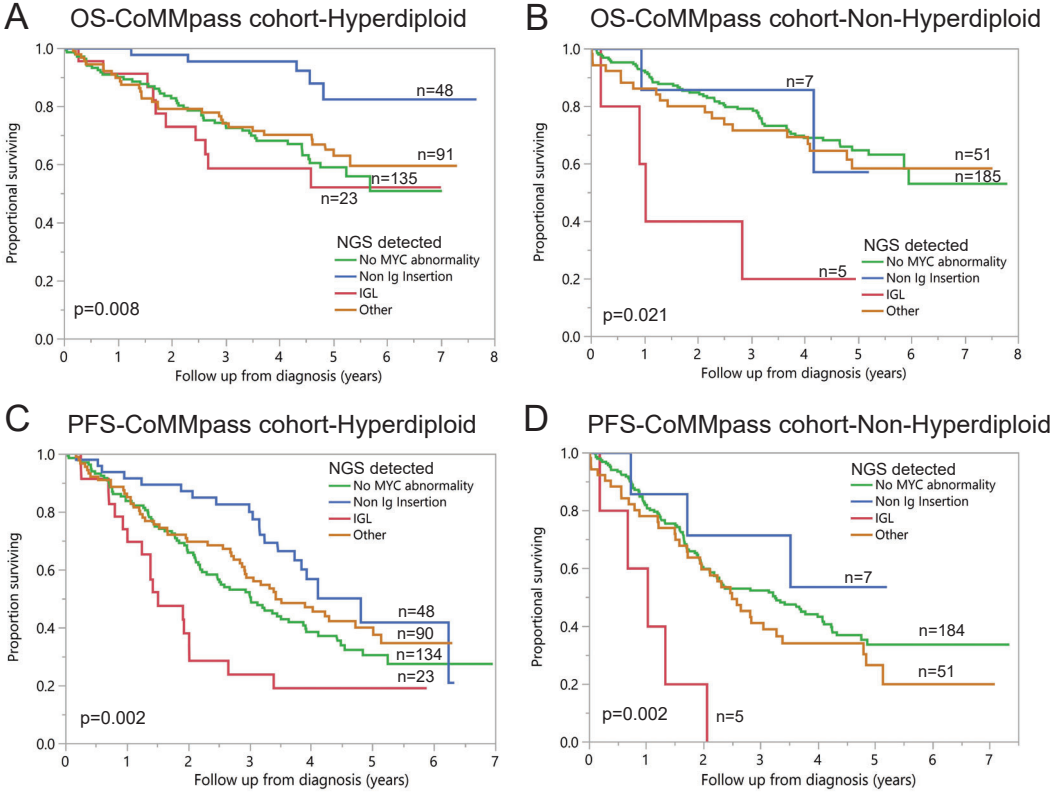


Supplemental Figure 6



Supplemental Figure 6: Impact of MYC SV on OS PFS in hyperdiploid and non-hyperdiploid groups. Comparison of OS (years) in patients with no MYC abnormality (no MYC SV, MAX SNV, monosomy 8 and trisomy 8) (green line), with non-Ig insertion (blue line), with IgL rearrangements (all IgL insertions) (red line) and all others (orange line) detected by WGS from the CoMMpass cohort in the hyperdiploid group in **A** or in the non-hyperdiploid group in **B**. In the hyperdiploid group, OS time (mean) was 5.0 years [95%CI:4.5-5.5] (n=135), 7.0 [95%CI:6.5-7.5] years (n=48), 4.7 [95%CI:3.6-5.8] years (n=23) and 5.4 [95%CI:4.8-5.9] years (n=91) in the no MYC abnormality, non-Ig insertion, IgL and other group, respectively. In the non-hyperdiploid group, OS time (mean) was 5.6 years [95%CI:5.2-6.1] (n=185), 4.3 [95%CI:3.2-5.4] years (n=7), 2.0 [95%CI:0.5-3.5] years (n=5) and 5.3 [95%CI:4.5-6.1] years (n=51) in the no MYC abnormality, non-Ig insertion, IgL and other group, respectively. Comparison of PFS (years) in patients with no MYC abnormality (no MYC SV, MAX SNV, monosomy 8 and trisomy 8) (green line), with non-Ig insertion (blue line), with IgL rearrangements (all IgL insertions) (red line) and all others (orange line) detected by WGS from the CoMMpass cohort in the hyperdiploid group in **C** or in the non-hyperdiploid group in **D**. In the hyperdiploid group, PFS time (median) was 3.0 years [95%CI:2.3-3.7] (n=134), 4.8 [95%CI:3.6-6.0] years (n=48), 1.5 [95%CI:0.7-2.3] years (n=23) and 3.4 [95%CI:2.4-4.5] years (n=90) in the no MYC abnormality, non-Ig insertion, IgL and other group, respectively. In the non-hyperdiploid group, PFS time (median) was 3.3 years [95%CI:2.2-4.3] (n=184), 3.8 (mean) [95%CI:2.5-5.1] years (n=7), 1.0 [95%CI:0.3-1.8] years (n=5) and 2.5 [95%CI:1.9-3.1] years (n=51) in the no MYC abnormality, non-Ig insertion, IgL and other group, respectively.