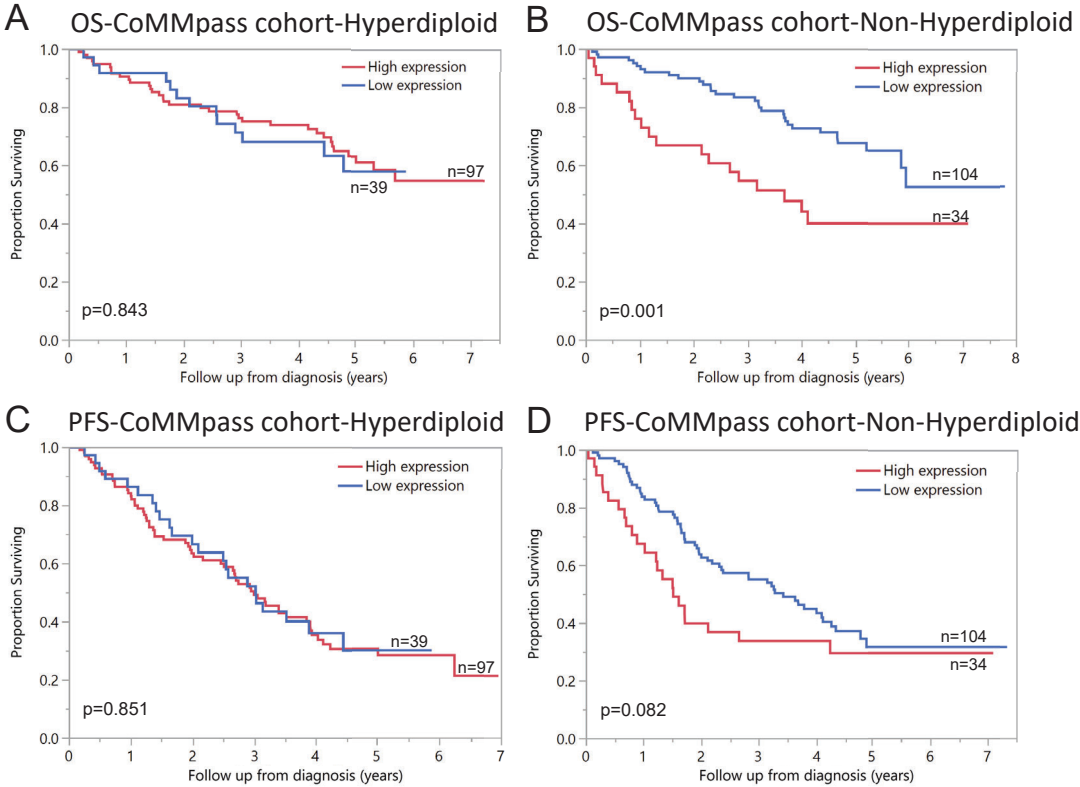


Supplemental Figure 4



Supplemental Figure 4: Impact of MYC gene expression on OS and PFS in hyperdiploid and non-hyperdiploid groups. Comparison of OS (years) in patients with low MYC expression (≤ 16.5 TPM) (blue line), and high MYC expression (≥ 75.0 TPM) (red line) detected by RNAseq from the CoMMpass cohort in the hyperdiploid group in **A** or in the non-hyperdiploid group in **B**. In the hyperdiploid group, OS time (mean) was 4.6 years [95%CI:3.9-5.2] and 5.4 years [95%CI:4.9-6.0] in low (n=39), and high (n=97) MYC expression cohorts, respectively. In the non-hyperdiploid group, OS time (mean) was 5.8 years [95%CI:5.2-6.4] and 3.9 years [95%CI:3.0-4.9] in low (n=104), and high (n=34) MYC expression cohorts, respectively. A comparison of PFS (years) in patients with low MYC expression (≤ 16.5 TPM) (blue line), and high MYC expression (≥ 75.0 TPM) (red line) detected by RNAseq from the CoMMpass cohort in the hyperdiploid group in **C** or in the non-hyperdiploid group in **D**. In the hyperdiploid group, PFS time (median) was 3.0 years [95%CI:2.2-3.8] and 3.0 years [95%CI:4.4-3.6] in low (n=39) and high (n=97) MYC expression cohorts. In the non-hyperdiploid group, PFS time (median) was 3.4 years [95%CI:2.5-4.4] and 1.5 years [95%CI:1.0-2.0] in low (n=104) and high (n=34) MYC expression cohorts, respectively.