

Forests plots and funnel plots for all parameters

Fig. 1 pooled effects of trazodone on TST

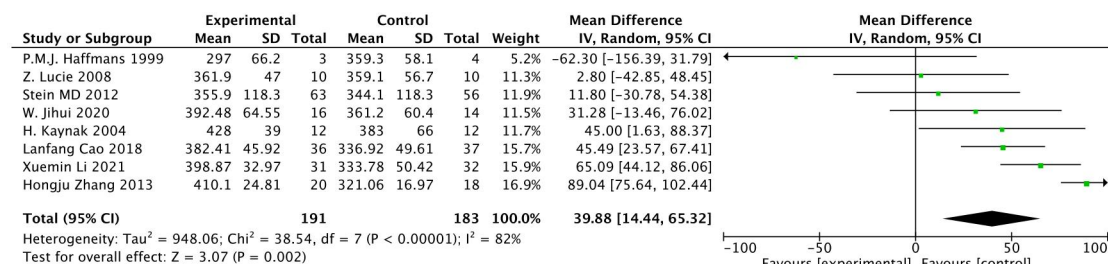


Fig. 2 subgroups analysis to TST (treatment duration)

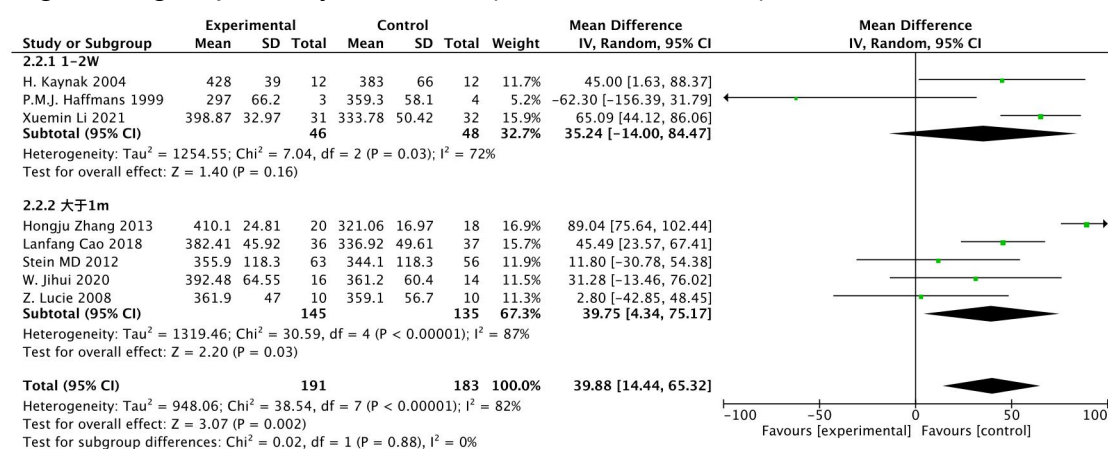


Fig. 3 subgroups analysis to TST (mean age)

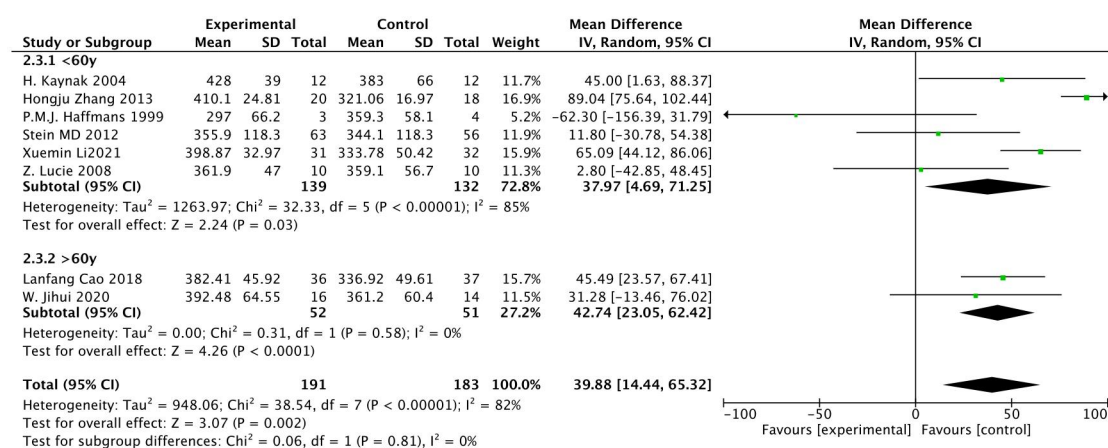


Fig. 4 subgroups analysis to TST(dosage)

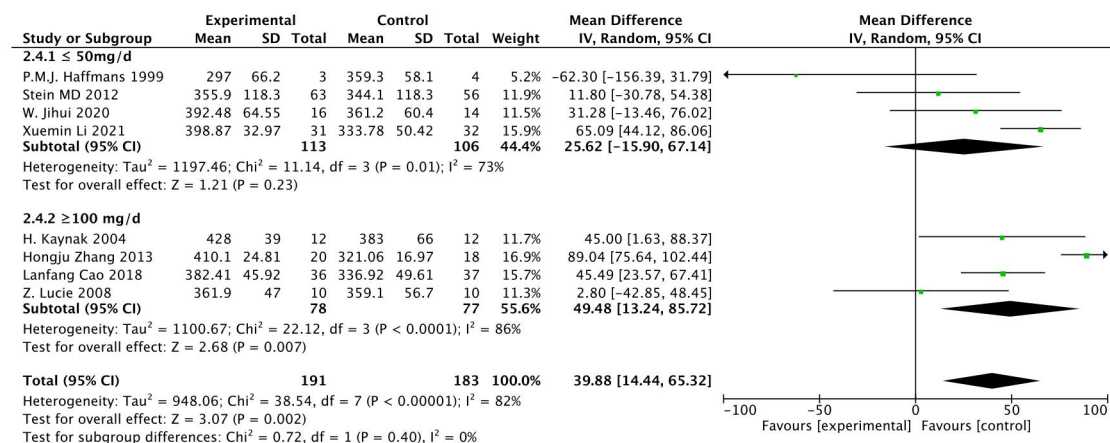


Fig. 5 subgroups analysis to TST(treatment combination or placebo)

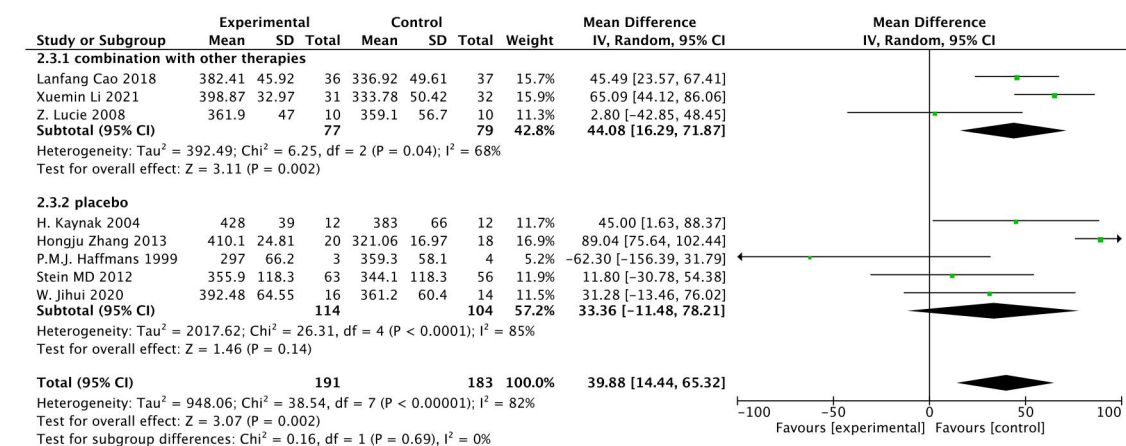


Fig. 6 Funnel plot for TST

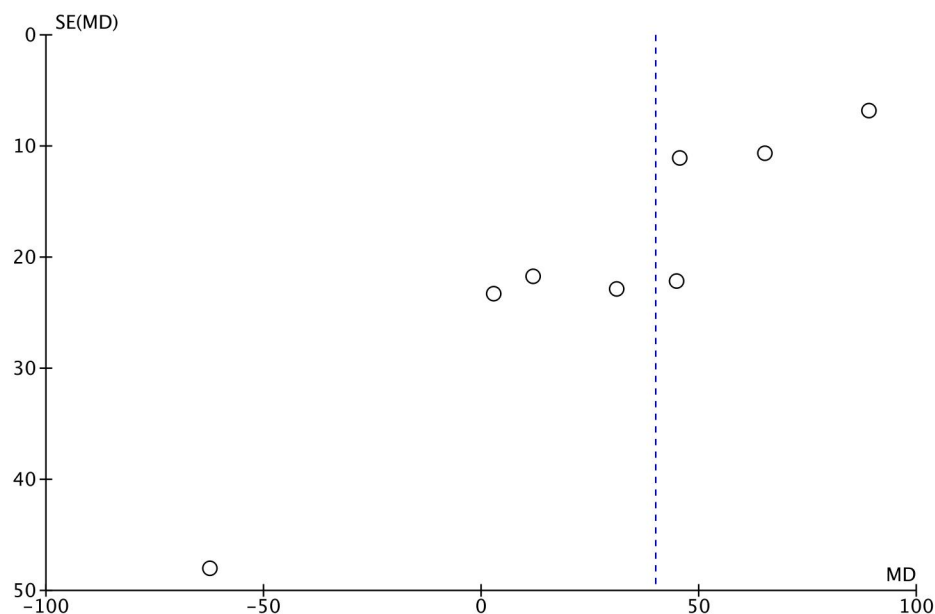


Fig. 7 pooled effects of trazodone on LPS

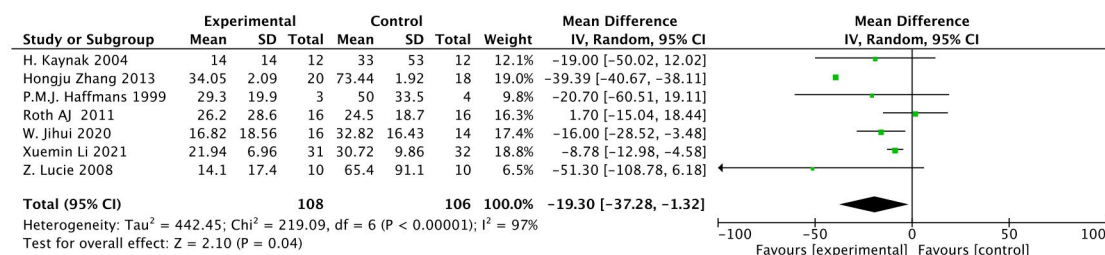


Fig. 8 Sensitivity analysis to LPS

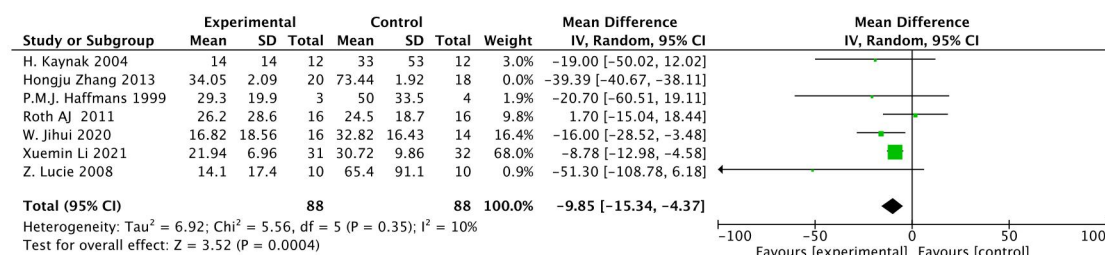


Fig. 9 subgroups analysis to LPS(dosage)

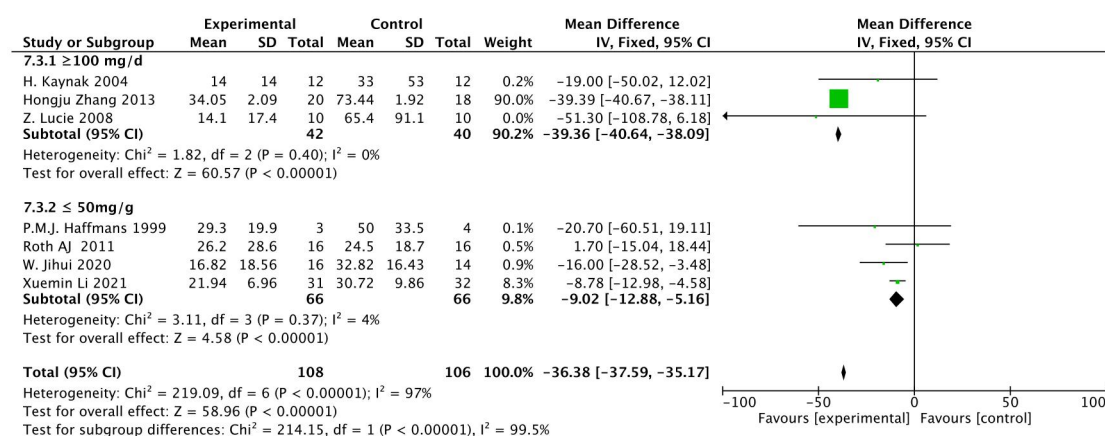
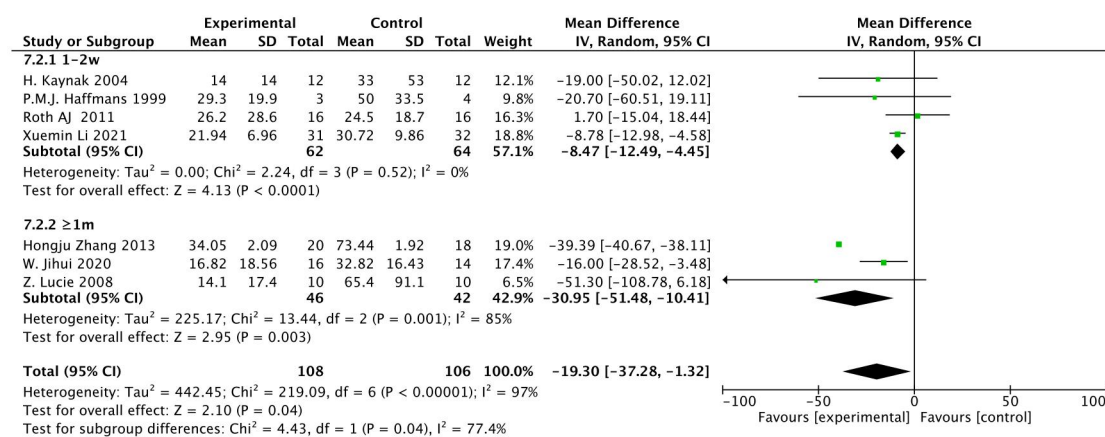


Fig. 10 subgroups analysis to LPS (treatment duration)



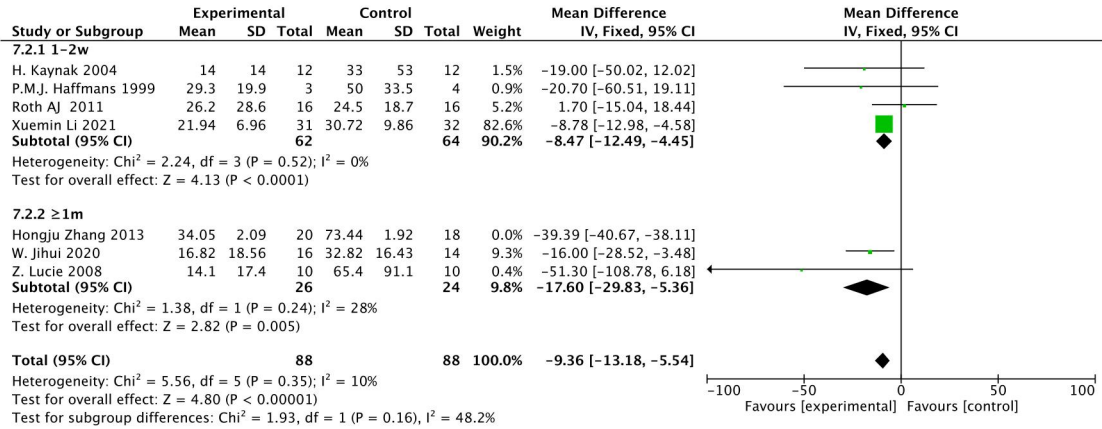


Fig. 11 subgroups analysis to LPS(combination with other therapies or placebo)

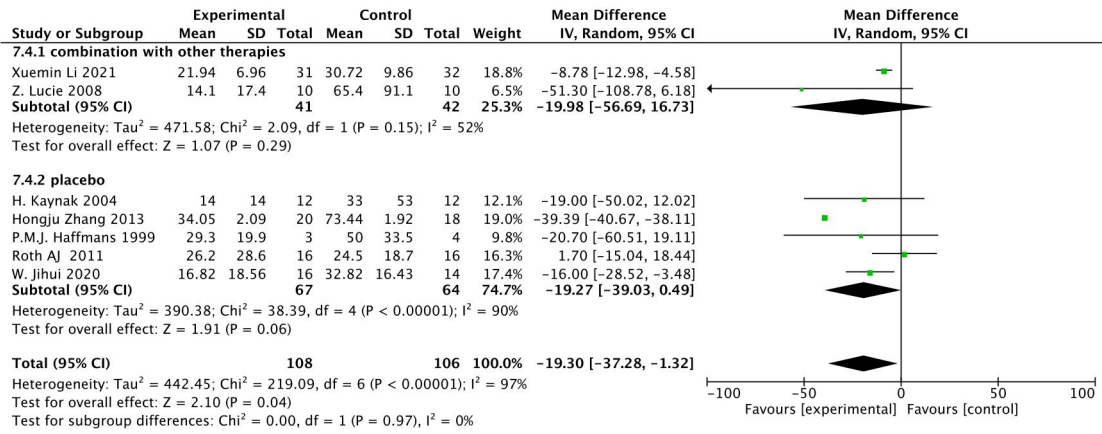


Fig. 12 Funnel plot for LPS

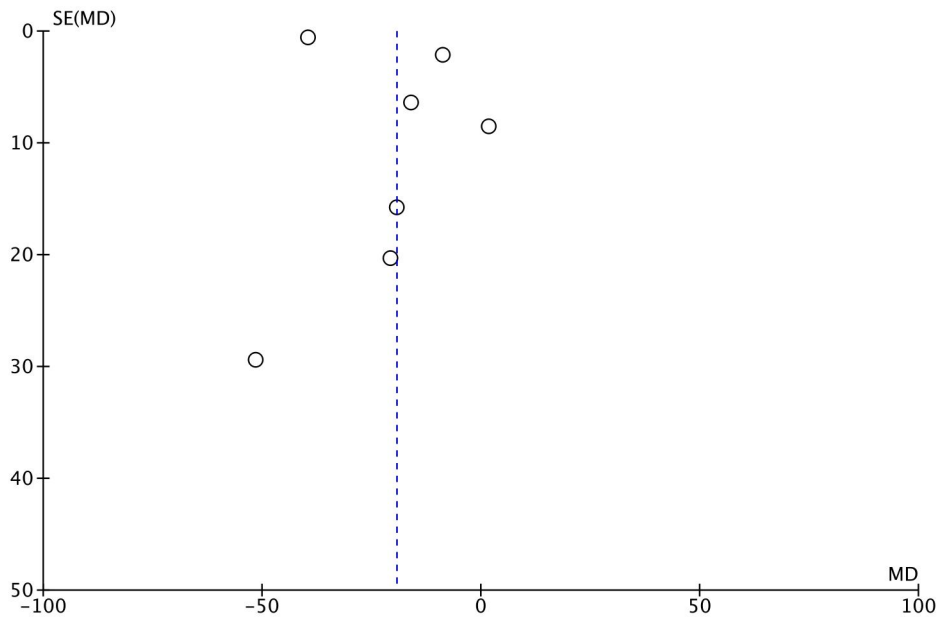


Fig. 13 pooled effects of trazodone on SE

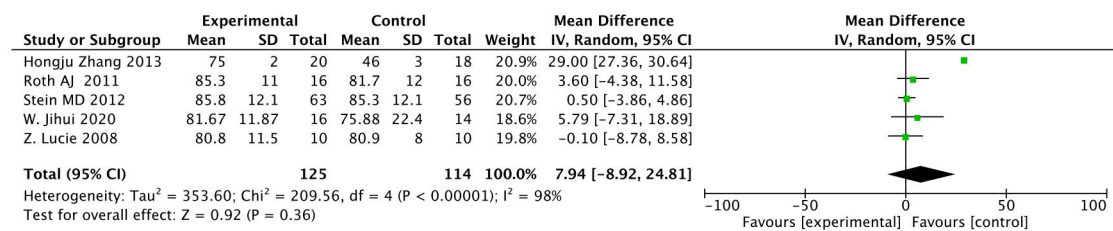


Fig. 14 Sensitivity analysis to SE

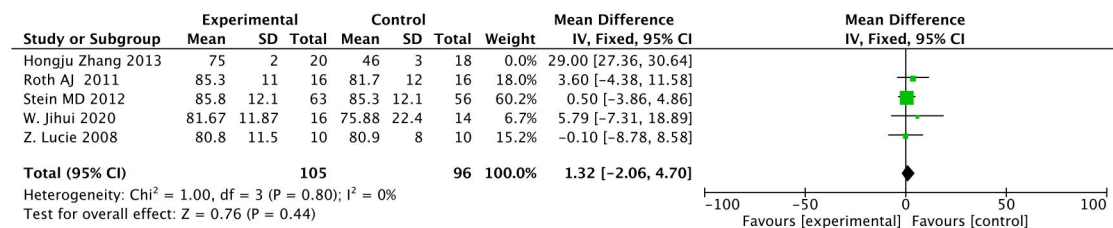


Fig. 15 Funnel plot for SE

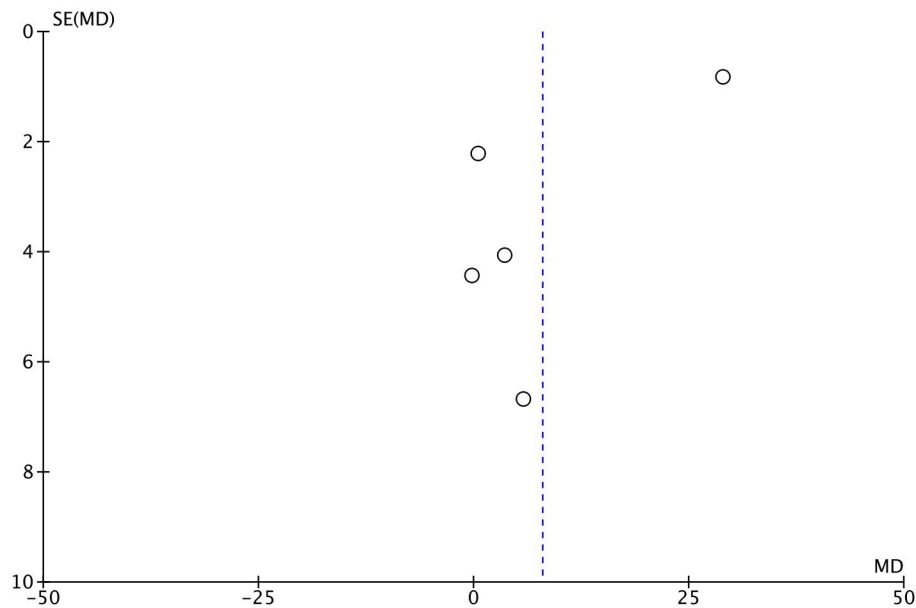


Fig. 16 pooled effects of trazodone on WASO

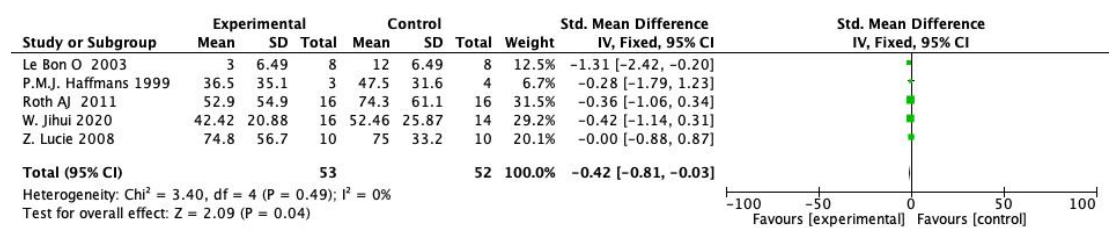


Fig. 17 Sensitivity analysis of WASO to combination of treatment

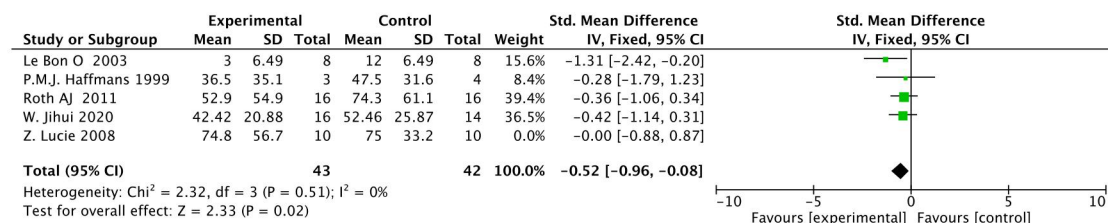


Fig. 18 Funnel plot for WASO

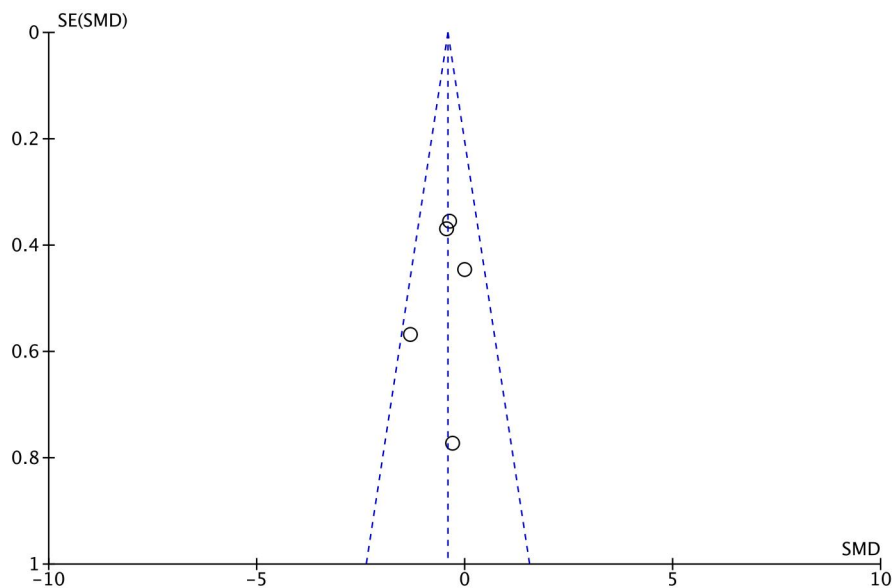


Fig. 19 pooled effects of trazodone on NAs (including both arousal times and arousal index)

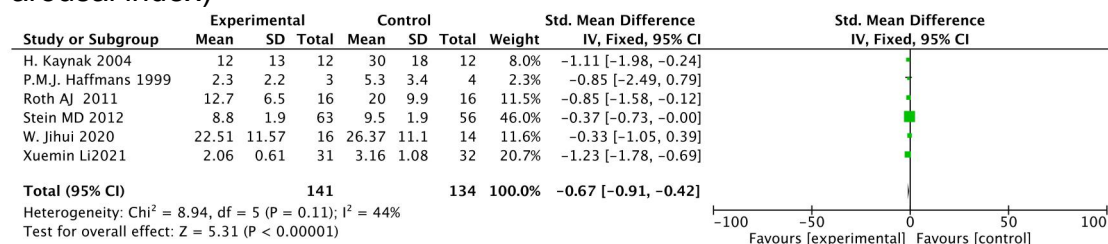


Fig. 20 Sensitivity analysis of NAs to combination of treatment

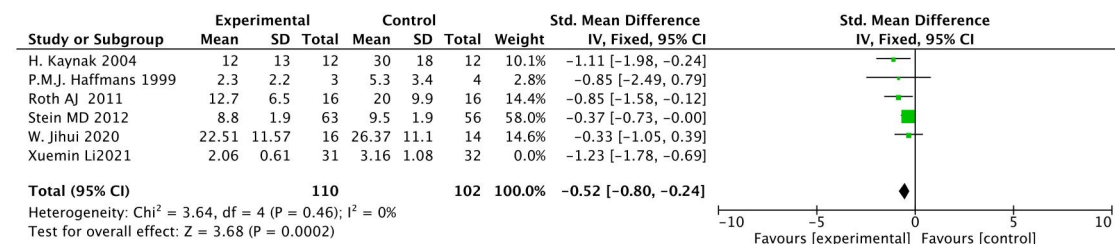


Fig. 21 Funnel plot for NAs

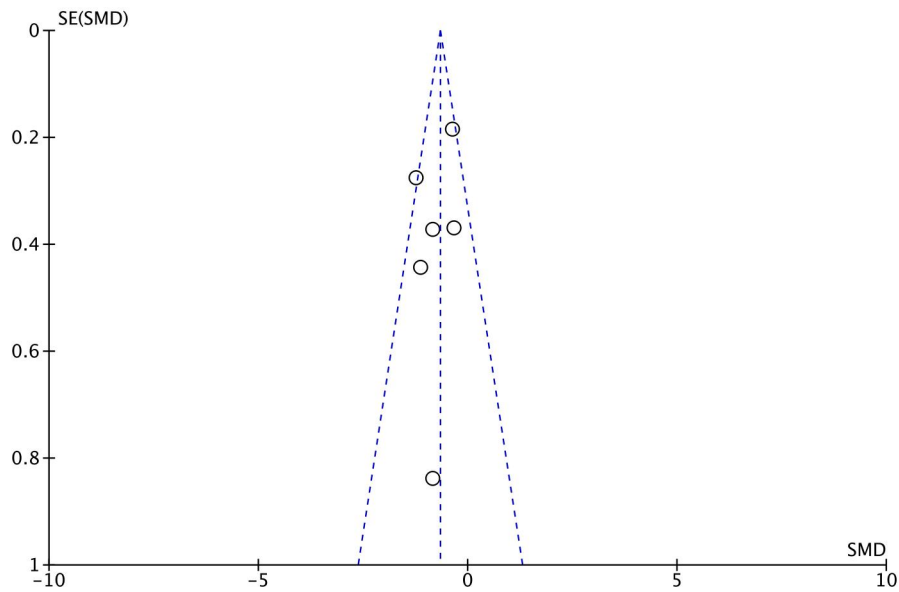


Fig. 22 pooled effects of trazodone on AHI

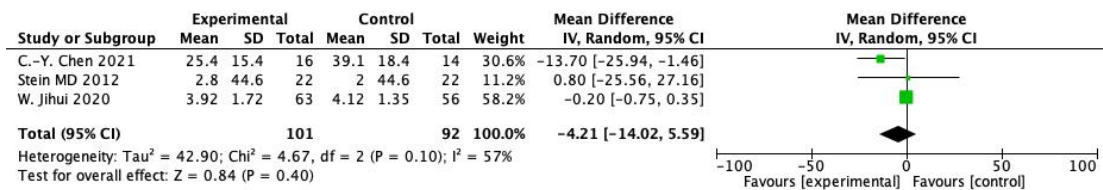


Fig. 23 pooled effects of trazodone on REML

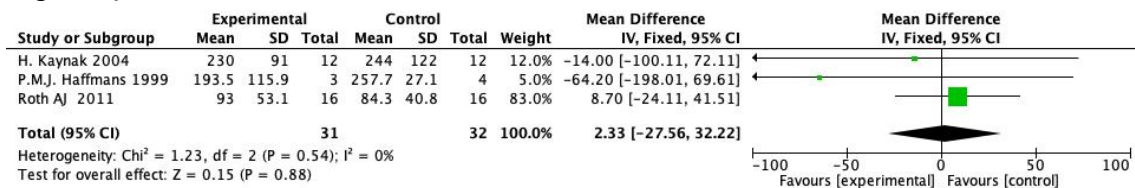


Fig. 24 pooled effects of trazodone on REM

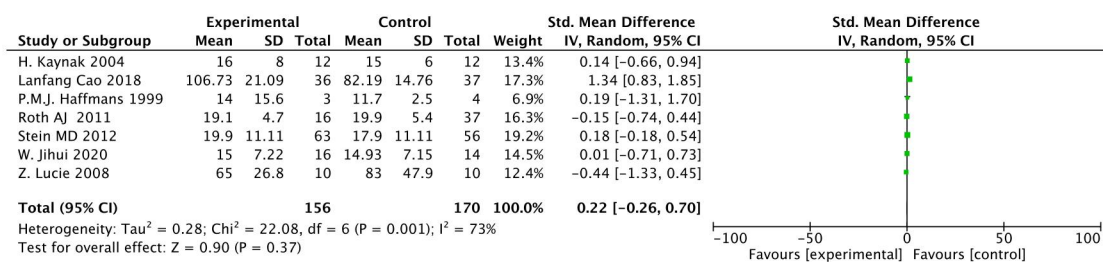


Fig. 25 Sensitivity analysis to REM

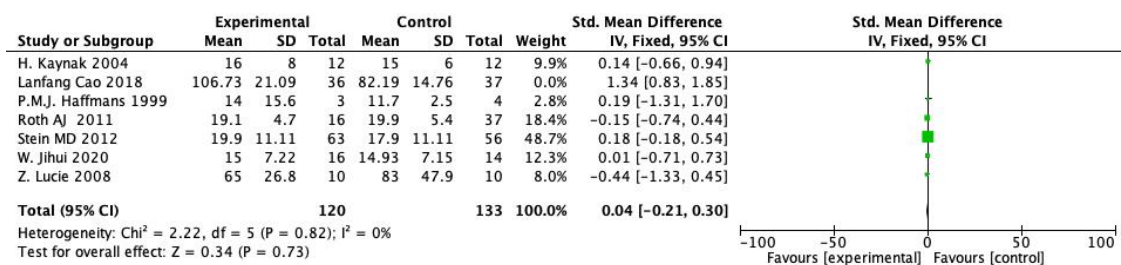


Fig. 26 subgroups analysis to REM (treatment duration)

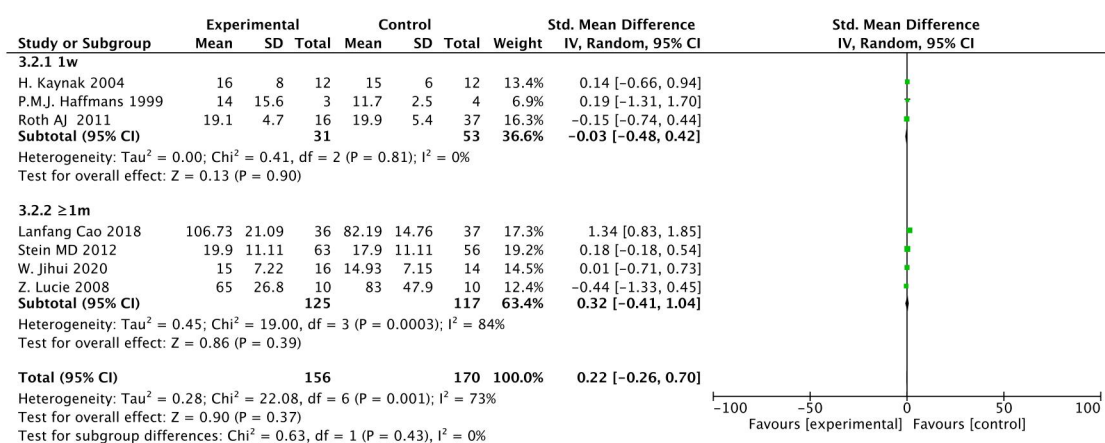


Fig. 27 subgroups analysis to REM(dosage)

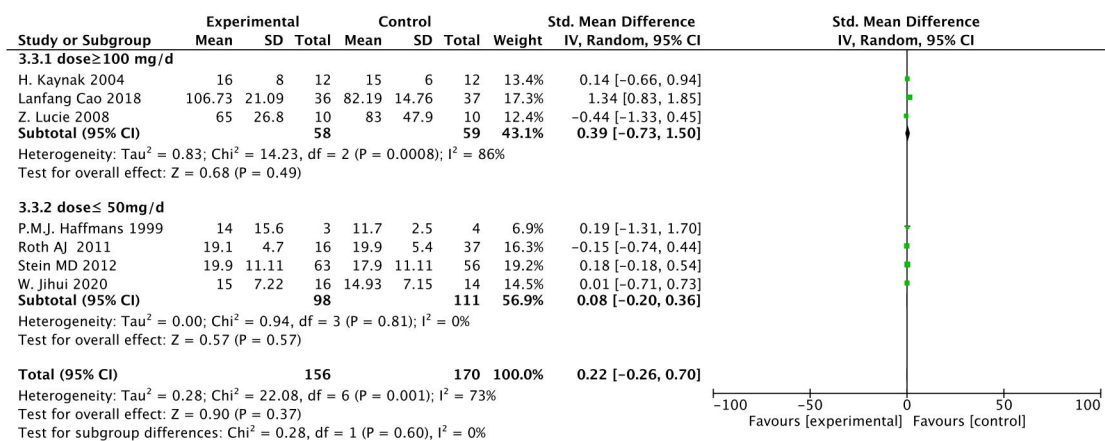


Fig. 28 subgroups analysis to REM (treatment combination or placebo)

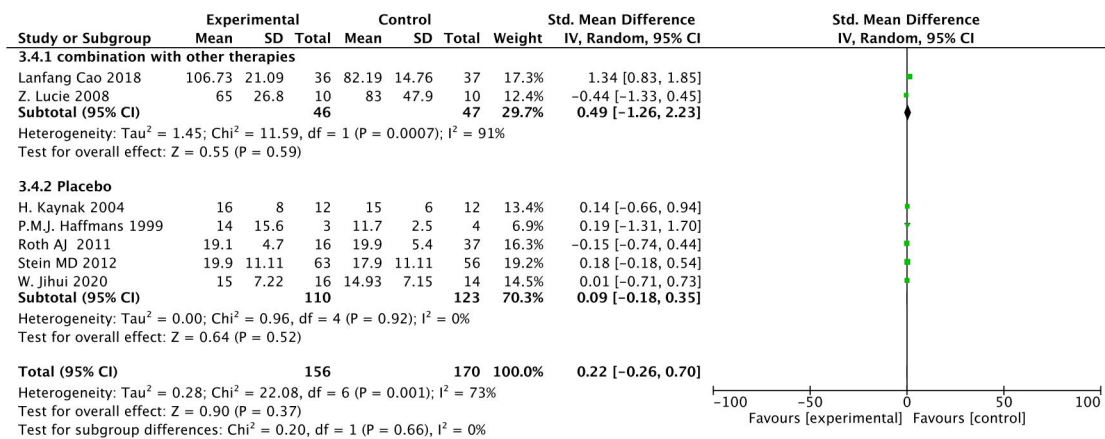


Fig. 29 Funnel plot for REM

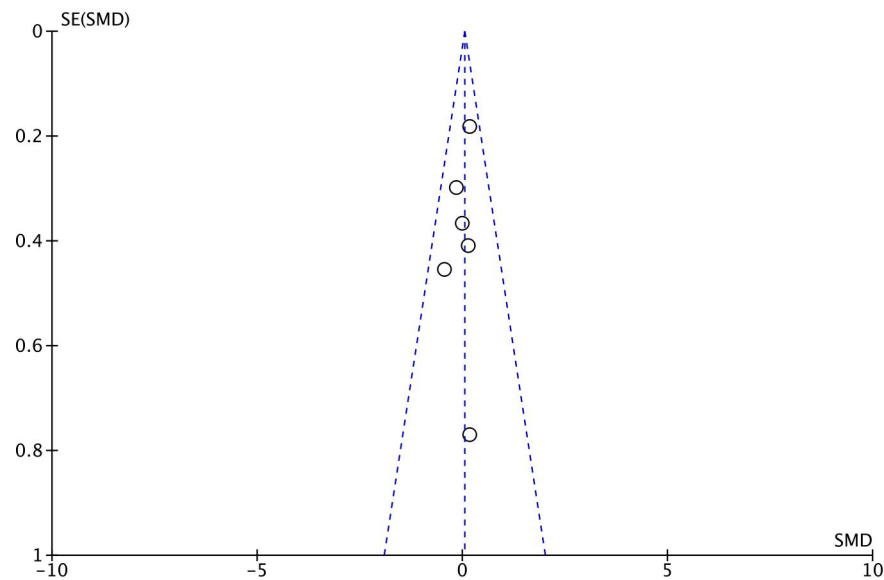


Fig. 30 pooled effects of trazodone on N1

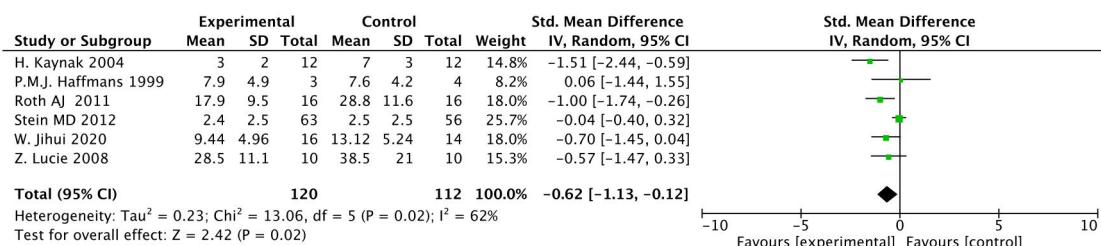


Fig. 31 Sensitivity analysis of heterogeneity to N1

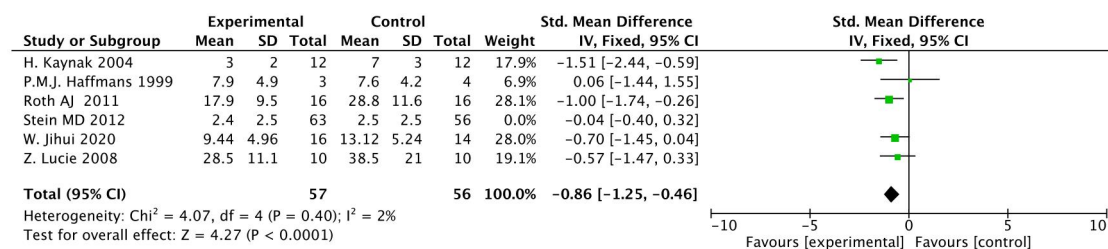


Fig. 32 Analysis on combination of treatment to N1

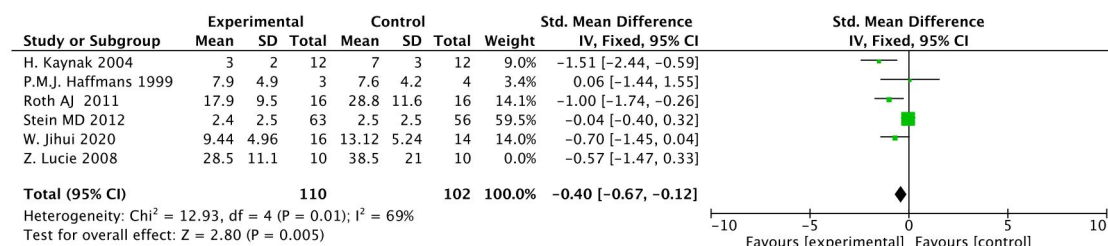


Fig. 33 subgroups analysis to N1 (treatment duration)

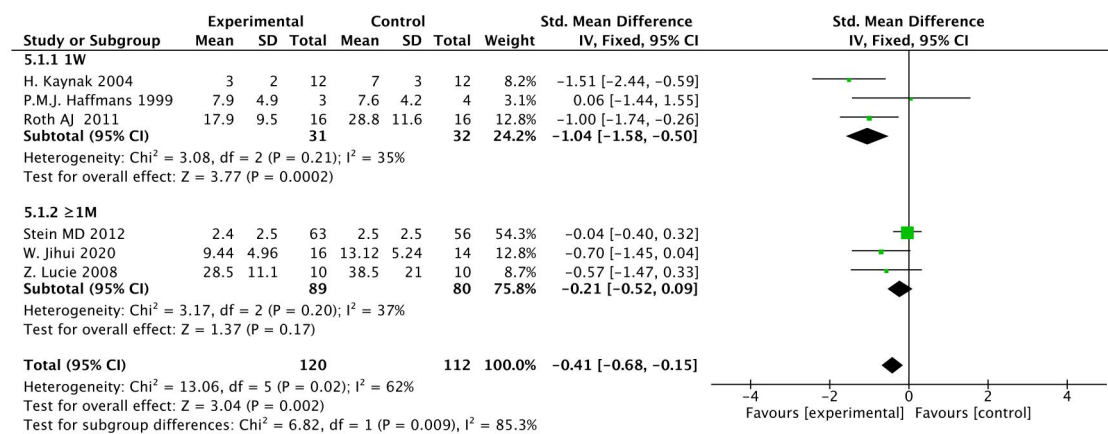


Fig. 34 subgroups analysis to N1(dosage)

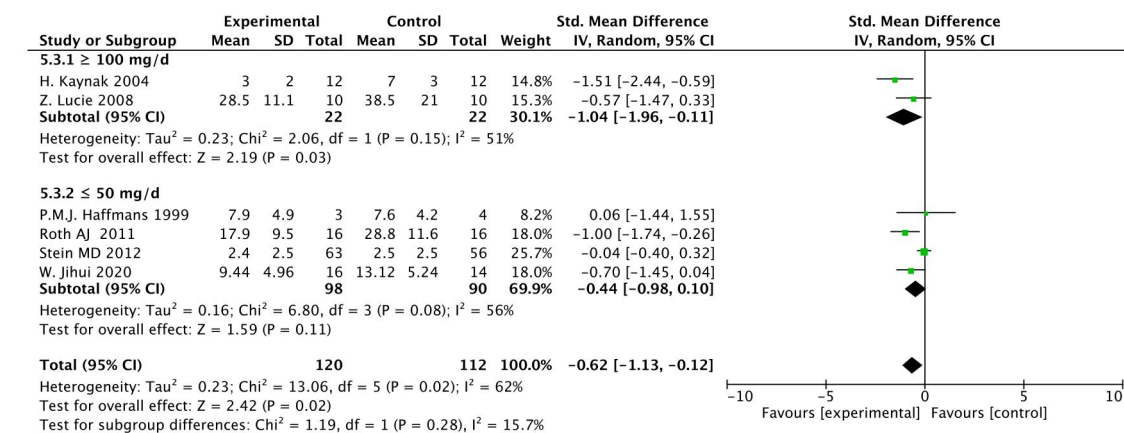


Fig. 35 Funnel plot for N1

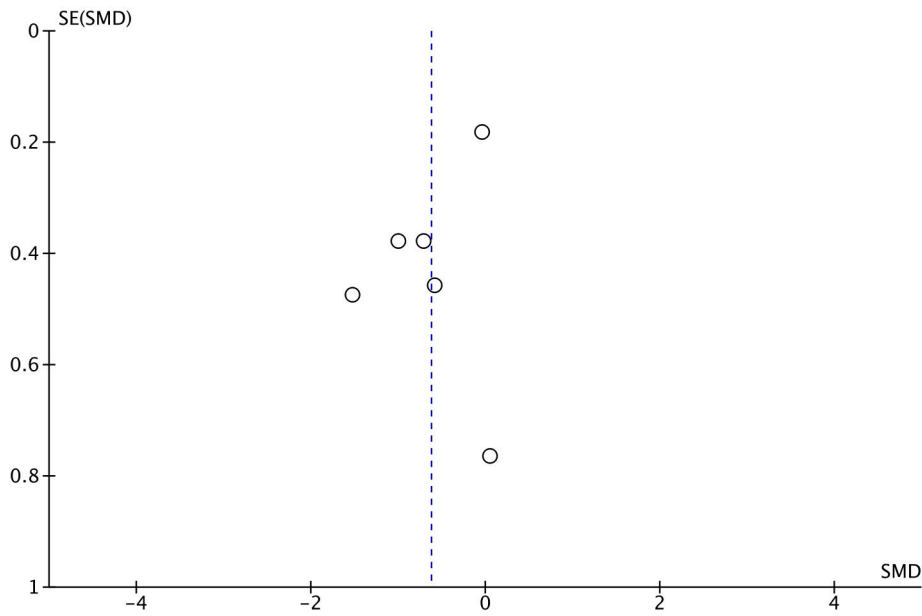


Fig. 36 pooled effects of trazodone on N2

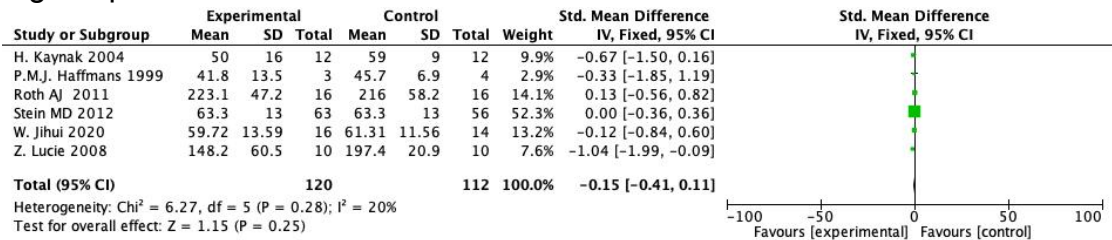


Fig. 37 Analysis on combination of treatment to N2

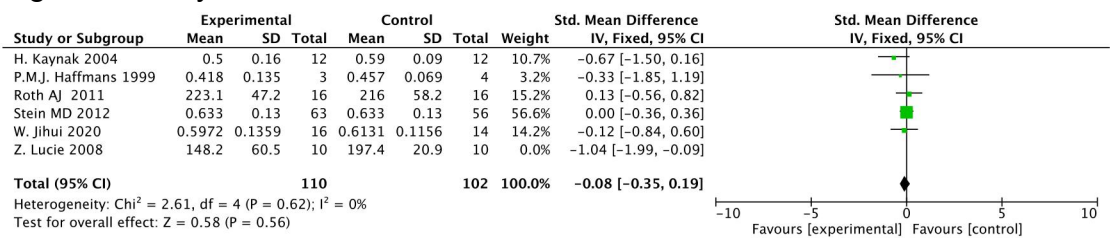


Fig. 38 subgroups analysis to N2 (treatment duration:1 week)

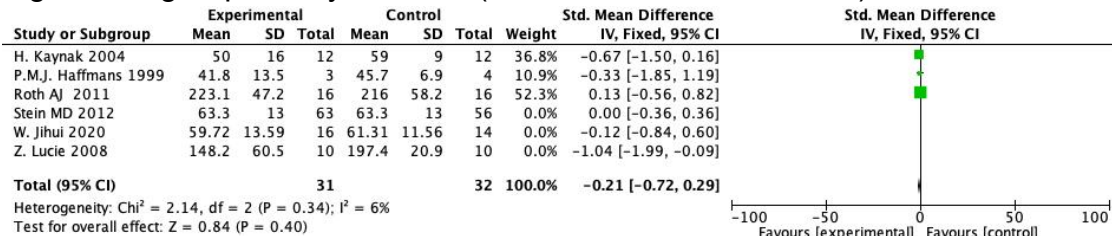


Fig. 39 subgroups analysis to N2 (treatment duration: ≥ 1 month)

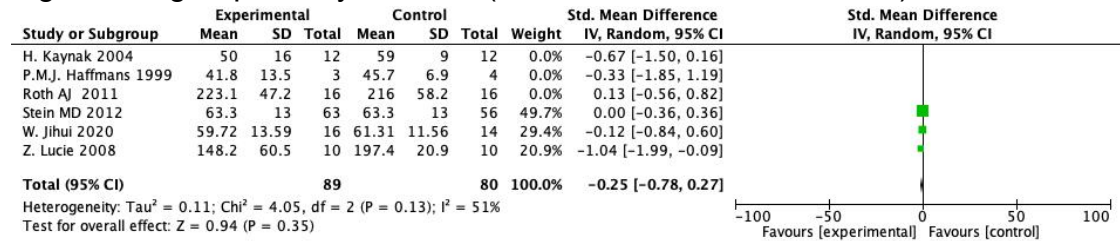


Fig. 40 subgroups analysis to N2(dosage)

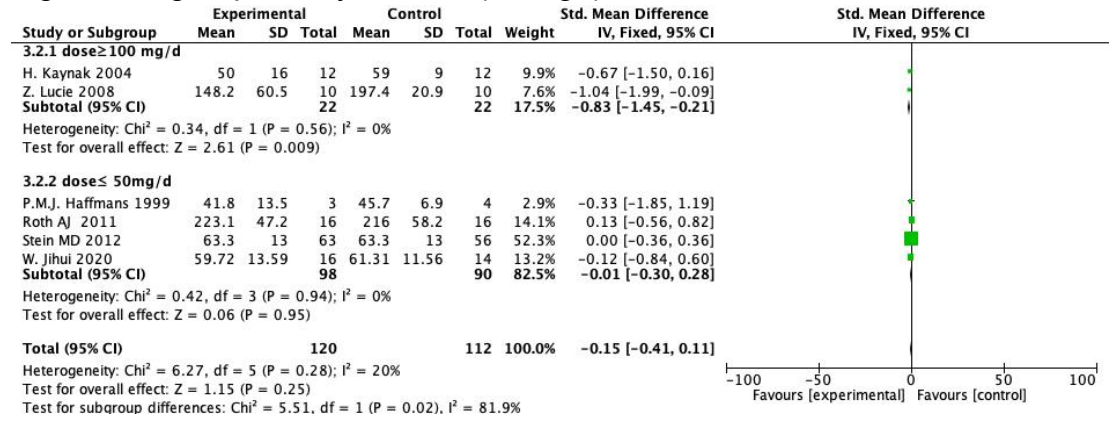


Fig. 41 Funnel plot for N2

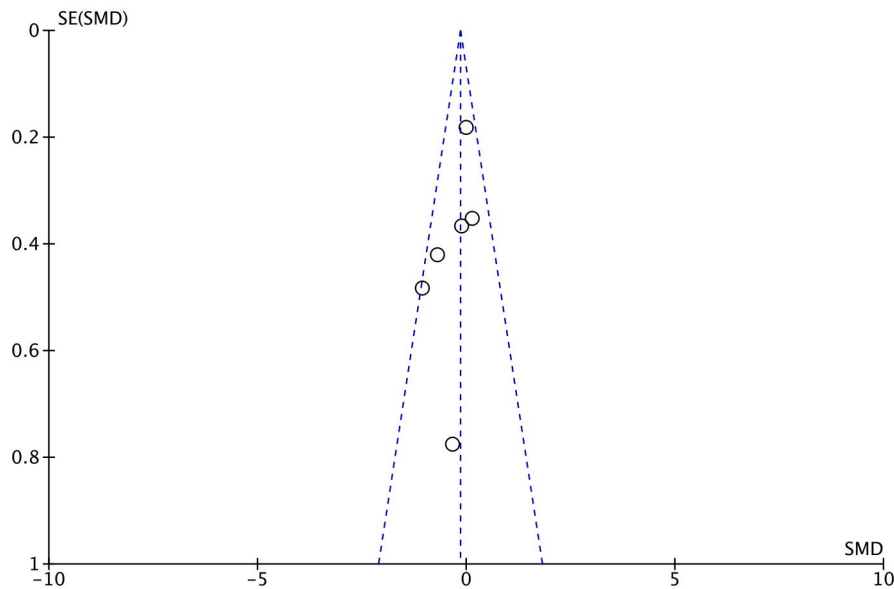


Fig. 42 pooled effects of trazodone on N3

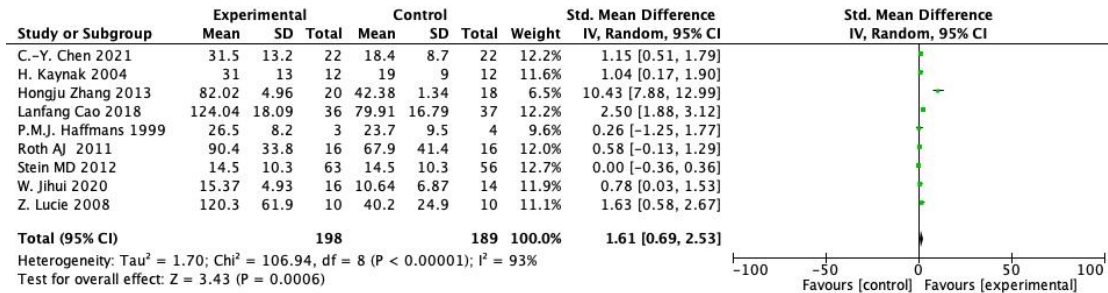


Fig. 43 subgroups analysis to N3 (mean age)

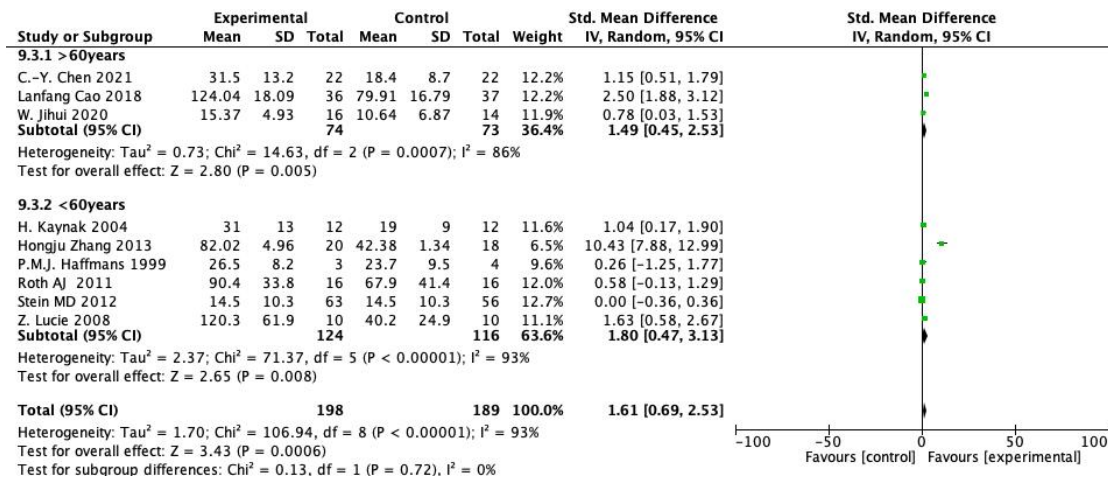


Fig. 44 subgroups analysis to N3(dosage)

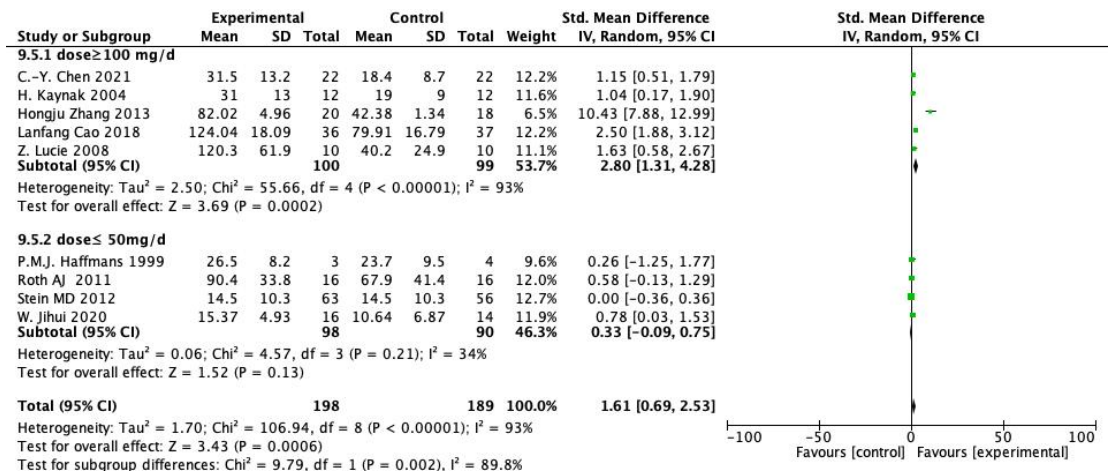


Fig. 45 subgroups analysis to N3 (treatment combination or placebo)

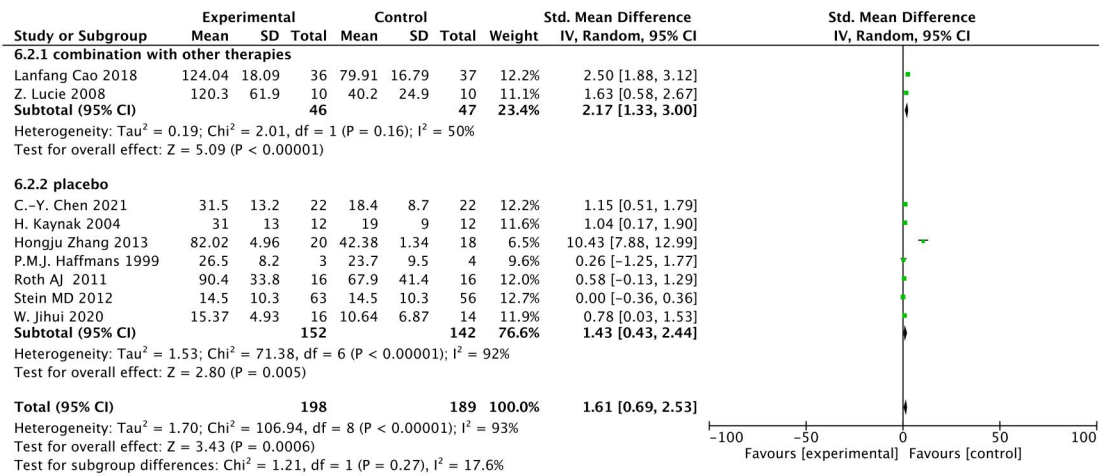


Fig. 46 subgroups analysis to N3 (treatment duration)

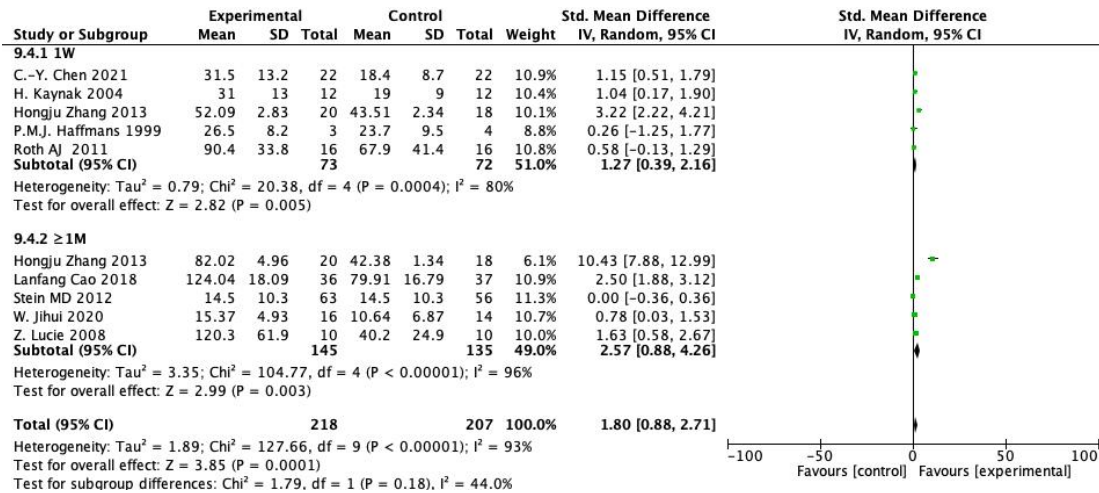


Fig. 47 Funnel plot for N3

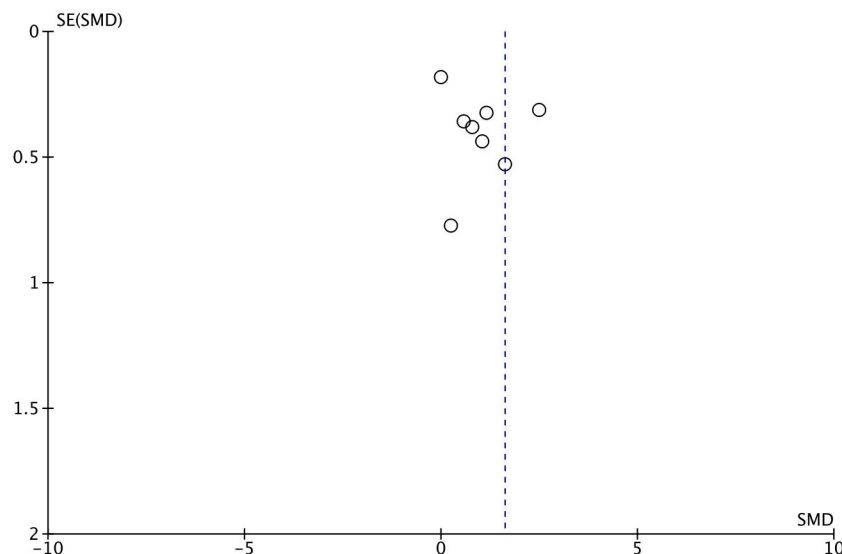


Fig. 48 discontinuation for all causes

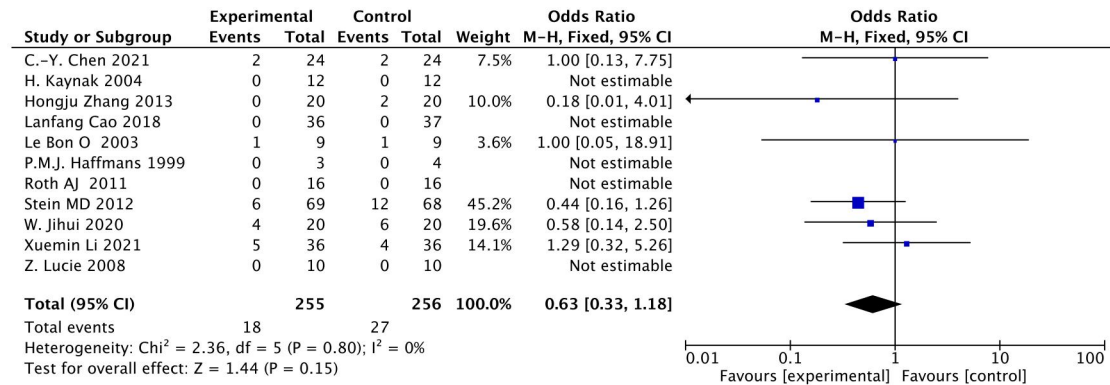


Fig. 49 Adverse event: dizziness

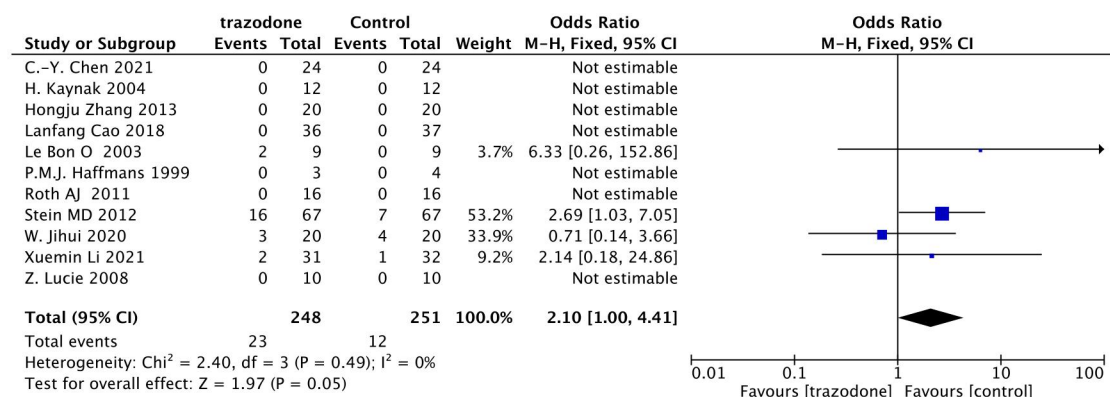


Fig. 50 Adverse event: headache

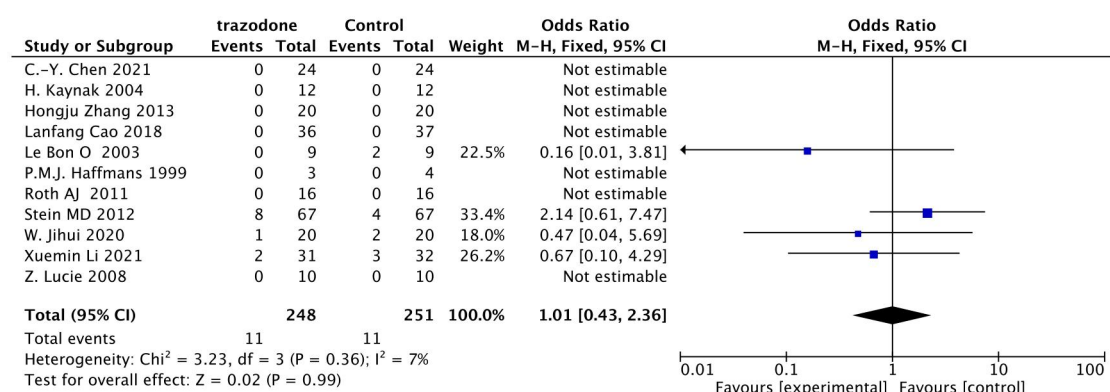


Fig. 51 Adverse event: daytime drowsiness

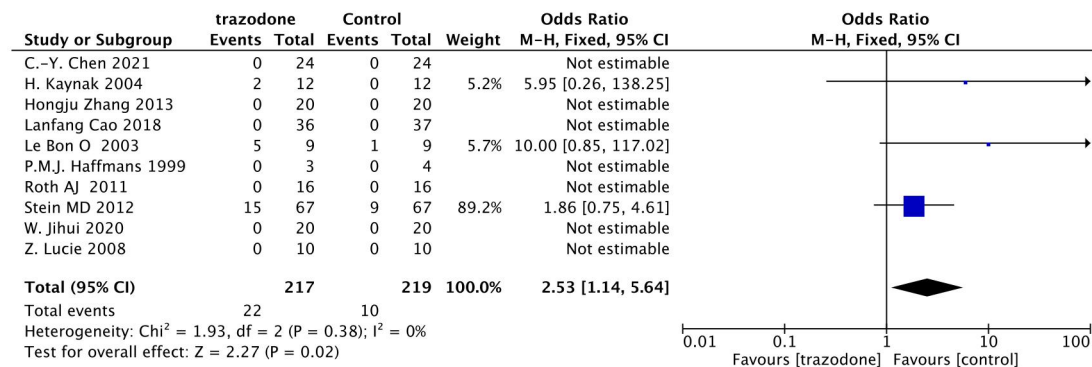
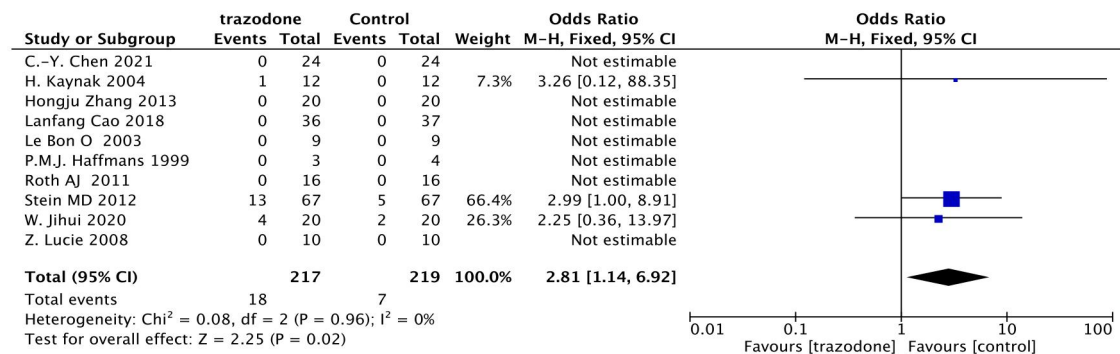


Fig. 52 Adverse event: decreased appetite



Article title: Trazodone Changed the Polysomnographic Sleep Architecture in Insomnia: A Systematic Review and Meta-Analysis

journal name: Drugs

author names: Yongliang Zheng¹ • Tian Lv² • Jingjing Wu³ • Yumeng Lyu¹

Affiliation:

¹ School of Rehabilitation Medicine, Jiangsu Vocational College of Medicine, Yancheng, China

² Department of Neurology, Zhuji Hospital Affiliated Shaoxing University, Shaoxing, China

³ Department of Cardiology, Pudong New Area People's Hospital, Shanghai, China

The corresponding author and e-mail address:

Yongliang Zheng, 12131@jsmc.edu.cn